

# COUNTY, INDIANA, 1915

Assessor's Plat-Book for

Blues Creek

Township, No.

26

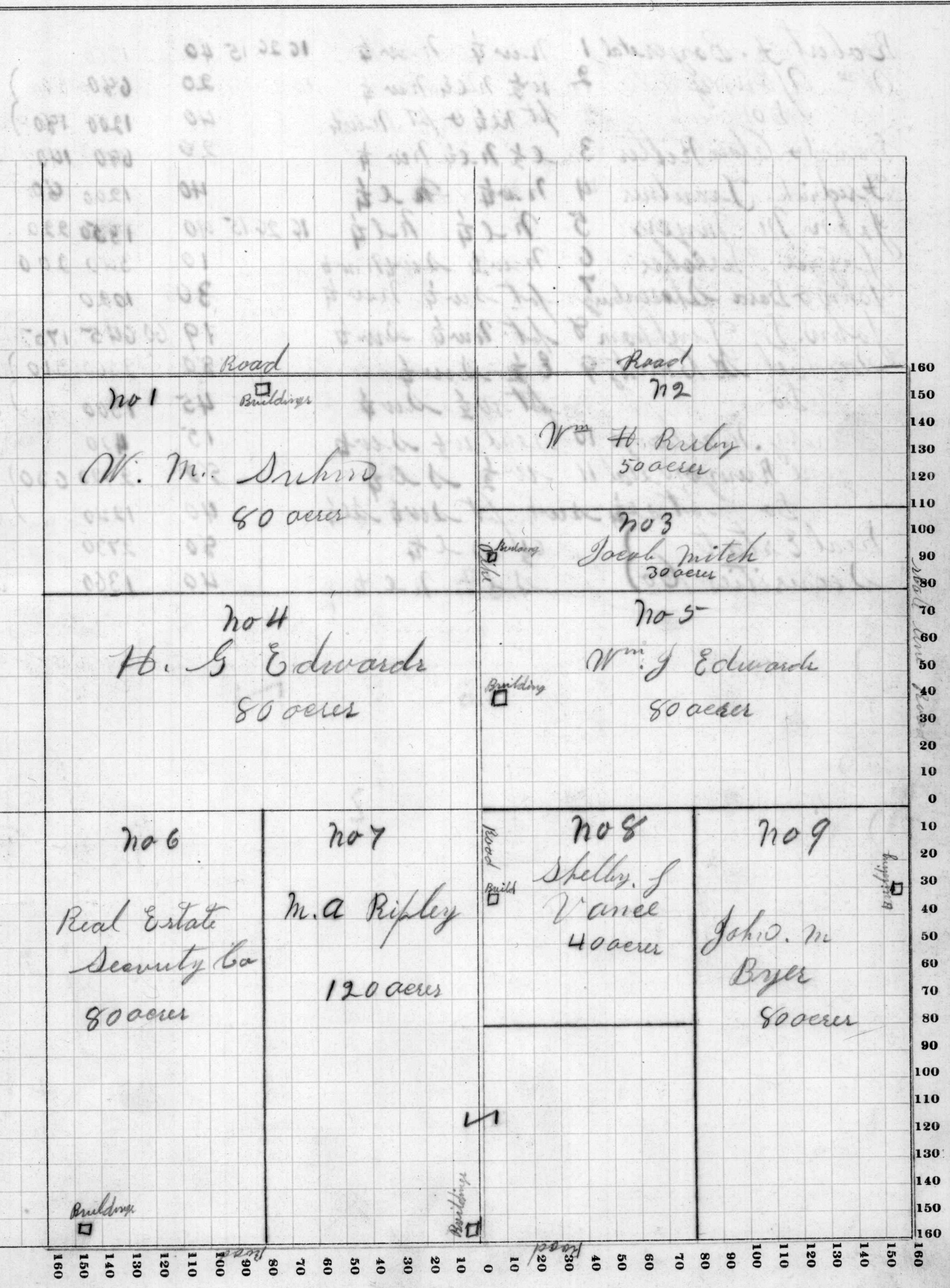
NAMES OF OWNERS	Number on Plat	DESCRIPTION	Section	Township	Range	Acres	Hundredths	Value of Lands	Value of Improvements	Value of Lands and Improvements
Winford M. Dyer	1	n ½ n w ¼	15	26	15	80		2800	500	3300
Wm H. Ruby	2	n pt n ½ n e ¼				50		1750	280	2030
Jacob Mitch	3	s pt n ½ n e ¼				30		1030	300	1330
H. B. Edwards	4	s ½ n w ¼				80		2830	630	3460
Wm. J. Edwards	5	s ½ n e ¼				80		2790	590	3380
Real Estate Security Co	6	w ½ s w ¼				80		2730	600	3330
Maxwell A. Ripley	7	e ½ s w ¼				80		2800	650	4850
Do		s w ¼ s e ¼				40		1400		
Shelby Vance	8	n w ¼ s e ¼				40		1400	300	1700
Jahrd. M. Byers	9	e ½ s e ¼				80		2780	590	3370

# SECTION No. 15

Congressional Township No. 26, R. 15

SCALE: Forty rods to an inch, or ten rods to a space, Congress Land, which is one mile square for a section.

Number of acres in this section, according to the United States Survey, .....



Assessor's Plat-Book for

*Bluecreek*

Township, No. *26*

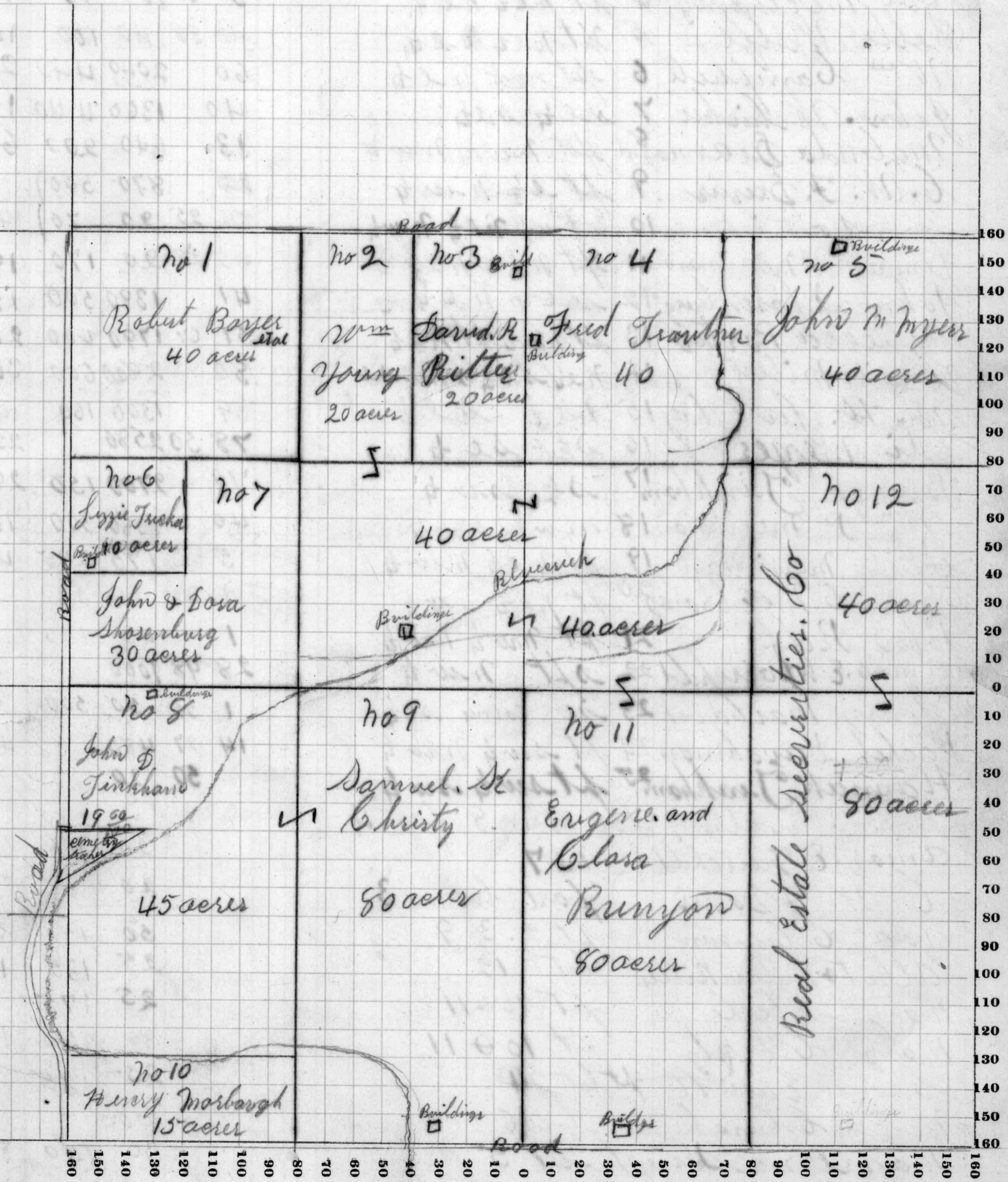
NAMES OF OWNERS	Number on Plat	DESCRIPTION	Section	Township	Range	Acres	Hundredths	Value of Lands	Value of Improvements	Value of Lands and Improvements
Robert F. Boyer et al	1	nw 1/4 nw 1/4	16	26	15	40		1360		1360
Wm Young	2	w 1/2 ne 1/4 nw 1/4				20		680		} 2060
Do		pt ne 1/4 & pt nw 1/4				40		1200	180	
David & Clara Ritter	3	e 1/2 ne 1/4 nw 1/4				20		690	140	830
Friedrich Trautner	4	nw 1/4 ne 1/4				40		1200	800	1280 ✓
John M Myers	5	ne 1/4 ne 1/4	16	26	15	40		1350	220	1570
Lizzie Tischer	6	nw 1/4 sw 1/4 nw 1/4				10		340	200	540
John & Berd Shoenberg	7	pt sw 1/4 nw 1/4				30		1020		1020
John D. Trinkham	8	pt nw 1/4 sw 1/4				19	60	645	175	820
Daniel H. Christy	9	e 1/2 sw 1/4				80		2560	510	} 4370
Do		pt w 1/2 sw 1/4				45		1300		
Henry Marshall	10	send w 1/2 sw 1/4				15		400		400
Eugene Runyon et al	11	w 1/2 s 1/4				80		2720	630	} 4590
Do		pt se 1/4 sw 1/4 pt sw 1/4 se 1/4				40		1240		
Real Estate	}	e 1/2 s 1/4				80		2730	600	} 4090
Securities Co		s 1/4 ne 1/4				40		1360		

# SECTION No. 16

Congressional Township No. 20, R. 15

SCALE: Forty rods to an inch, or ten rods to a space, Congress Land, which is one mile square for a section.

Number of acres in this section, according to the United States Survey, .....



Assessor's Plat-Book for Blue creek Township, No. 26

NAMES OF OWNERS	Number on Plat	DESCRIPTION	Section	Township	Range	Acres	Hundredths	Value of Lands	Value of Improvements	Value of Lands and Improvements
Hiram Varnett	1	nw pt nw & nw 1/4	17	26	15	1		40	80	120
Joyd. B. Campbell	2	pt nw & nw 1/4				17	36	590	290	880
Arthur DeArmond	3	pt nw & nw 1/4				1	64	50	280	330
Yol McElhoney	4	pt ne & ne 1/4	3	65		3	65	120	10	130
Belle Wolfe	5	pt ne & ne 1/4					88	40	100	140
Wm Campbell	6	pt w & ne 1/4				60		2040	440	2480
John Whicker	7	se 1/4 se 1/4				40		1360	440	1800
Malinda DeArmond	8	pt nw & nw 1/4				13		440	200	640
C. W. F. Davis	9	pt e 1/2 nw 1/4				25		870	500	1460
Do	10	pt w & ne 1/4 nw 1/4					25	20	70	
Jemuel W. Merriman	11	pt ne & nw 1/4					25	20	170	
John Shosenburg	12	se 1/4 ne 1/4				41		1390	500	1890
Rebecca Porter	13	pt nw & pt ne 1/4				57	67	1790	400	2190
Maggie Miller	14	ne & sw & nw se				80		2800	600	3400
W. H. Farquhar	15	ne 1/4 se 1/4				39		1300	160	1460
Eli Meyer	16	se 1/4 se 1/4				78	50	2580		2580
Forenzo Jinkham	17	se 1/4 sw 1/4				79		2700	150	2850
Wm P. Merriman	18	nw & sw 1/4				40		1380	300	1680
Elisha Merriman	19	pt ne & nw 1/4				5		175	245	420
Geo. C. McElhoney	20	pt ne & nw 1/4				1	22	50	100	150
John Riff	21	pt nw & nw 1/4				1		40	150	190
Amos E. Fairchild	22	spt nw 1/4				28	98	1000		1000
Henry Marbach	23	se corner se 1/4				1	50	50	500	550
Rachel Bayhman	24	pt sw & nw 1/4				14	27	480		480
Hannah Jinkham	25	pt sw & sw 1/4					50	20		20
Geo. C. McElhoney		lots no 1, 8 part 4						70	280	350
Amos E. Fairchild		no 7						20	300	320
C. W. F. Davis		part lat 3						20	00	20
Zoa Clauson		pt 2, 3, 9						50	150	200
Albert & Barbara Bitter		lat 12						25	135	160
Mary Steele		pt 10 & 11						25	175	200
Mary Christy		pt 10 & 11						30	150	180
Ernest Everett		pt lat 4						25	135	160
M. E. Church		lat 6						00		
Marrissa Sengh		lat 5						30	160	190

# SECTION No. 17

Congressional Township No. 26, R. 15-

SCALE: Forty rods to an inch, or ten rods to a space, Congress Land, which is one mile square for a section.

Number of acres in this section, according to the United States Survey,.....

