

Assessor's Plat-Book for

*Blue creek*

Township, No. *26*

Number on Plat	DESCRIPTION	Section	Township	Range	Acres	Hundredths	Value of Lands	Value of Improvements	Value of Lands and Improvements
1	<i>pt n e 1/4 n w 1/4</i>	18	26	15	60		2050	500	
<i>Do</i>	<i>w 1/2 s e 1/4 n w 1/4</i>				20		690		3240
2	<i>e 1/2 n e 1/4 n w 1/4</i>				20		690	180	
<i>Do</i>	<i>e 1/2 s e 1/4 n w 1/4</i>				20		690		1560
3	<i>w 1/2 n e 1/4</i>				80		2750	200	2950
4	<i>n e 1/4 n e 1/4</i>				40		1390	600	
<i>Do</i>	<i>pt s e 1/4 n e 1/4</i>				30		1020		3010
5	<i>pt s e 1/4 n e 1/4</i>				10		340		
<i>Do</i>	<i>pt s e 1/4 s e 1/4</i>				60		2060	30	2430
6	<i>s w 1/4 n w 1/4</i>				40		1380	300	
<i>Do</i>	<i>pt w 1/2 s w 1/4</i>				50		1720	450	3850
7	<i>e 1/2 s w 1/4</i>				80		2800	600	3400
8	<i>pt w 1/2 s e 1/4</i>				53	33	1850	300	2150
9	<i>pt w 1/2 pt s e 1/4</i>				46	66	1610	460	2070
10	<i>pt s w 1/4 s w 1/4</i>				30		1030	100	1130

# SECTION No. 18

Congressional Township No. 20, R. 15-

SCALE: Forty rods to an inch, or ten rods to a space, Congress Land, which is one mile square for a section.

Number of acres in this section, according to the United States Survey,.....





# COUNTY, INDIANA, 1915

Assessor's Plat-Book for

*Bluecreek*

 Township, No. *26*

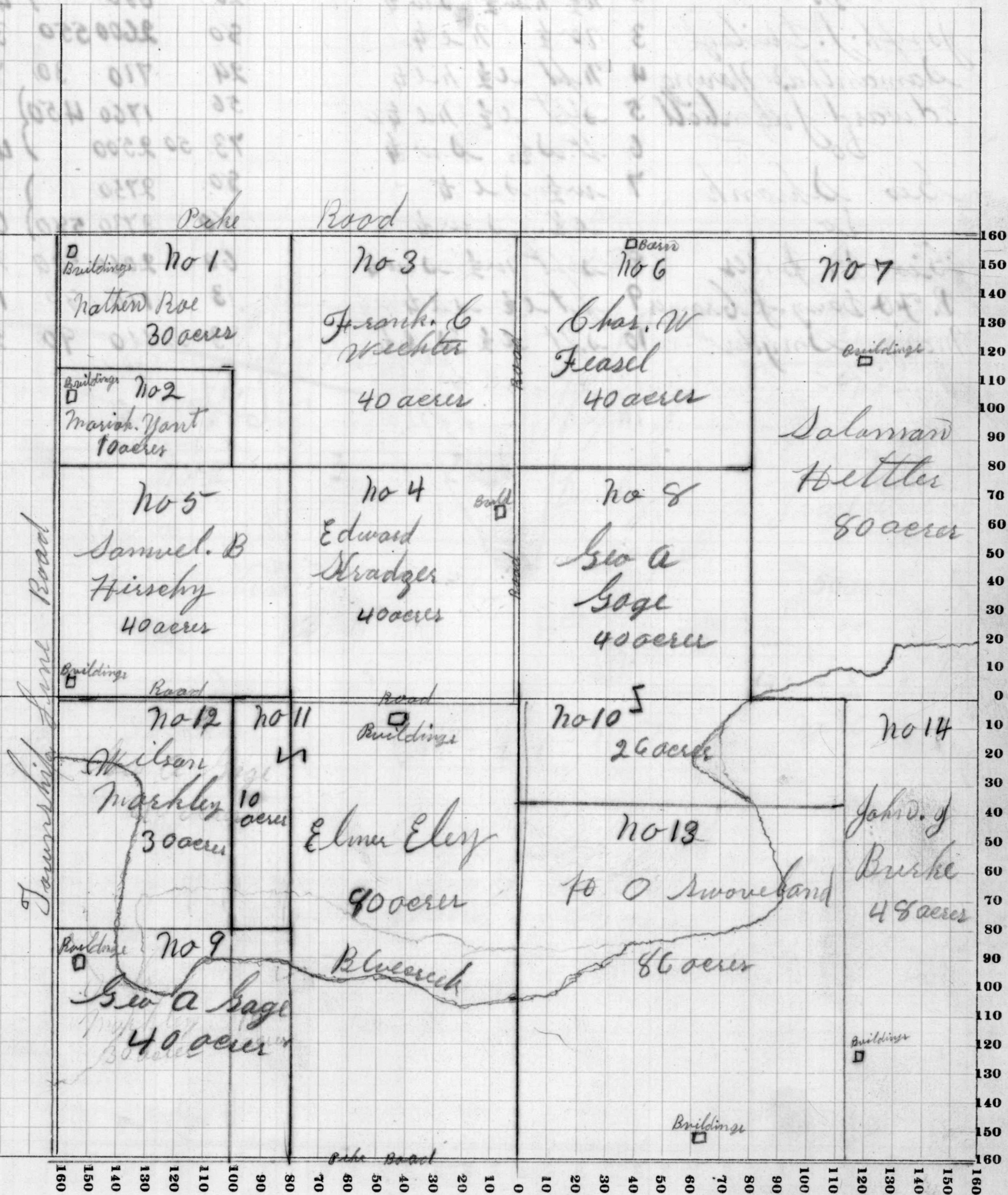
NAMES OF OWNERS	Number on Plat	DESCRIPTION	Section	Township	Range	Acres	Hundredths	Value of Lands	Value of Improvements	Value of Lands and Improvements
<i>Nathan Rol</i>	1	<i>pt nw 1/4 nw 1/4</i>	19	26	15	30		1050	150	1200
<i>Nariah Yant</i>	2	<i>pt nw 1/4 nw 1/4</i>				10		340	100	440
<i>Frank C. Wepler</i>	3	<i>nl 1/4 nw 1/4</i>				40		1360		1360
<i>Edward Bradzer</i>	4	<i>sl 1/4 nw 1/4</i>				40		1370	430	1800
<i>Samuel B. Hirschy</i>	5	<i>sw 1/4 nw 1/4</i>				40		1360	450	1810
<i>Chas. W. Fearl</i>	6	<i>nw 1/4 nl 1/4</i>				40		1360	150	1510
<i>Salomon Hettler</i>	7	<i>l 1/2 nl 1/4</i>				80		2560	440	3000
<i>Geo A Sage</i>	8	<i>sw 1/4 nl 1/4</i>				40		1350		
<i>Do</i>	9	<i>sw 1/4 sw 1/4</i>				40		1360	400	
<i>Do</i>	10	<i>pt nl 1/4 sl 1/4</i>				20		600	600	4310
<i>Elmer M Eley</i>	11	<i>l 1/2 sw 1/4</i>				80		2650	500	
<i>Do</i>		<i>pt nw 1/4 sw 1/4</i>				10		340		3490
<i>Wilson A Markley</i>	12	<i>pt nw 1/4 sw 1/4</i>				30		980	100	1080
<i>Hiram O Swoveland</i>	13	<i>pt sl 1/4</i>				80		2750	600	3350
<i>John J Burke</i>	14	<i>lpt l 1/2 sl 1/4</i>				48		1630	600	2230

SECTION No. 19

Congressional Township No. 29 S, R. 15 W

SCALE: Forty rods to an inch, or ten rods to a space, Congress Land, which is one mile square for a section.

Number of acres in this section, according to the United States Survey,.....





Assessor's Plat-Book for *Blue creek*

Township, No. *26*

NAMES OF OWNERS	Number on Plat	DESCRIPTION	Section	Township	Range	Acres	Hundredths	Value of Lands	Value of Improvements	Value of Lands and Improvements
<i>Amos W Wager</i>	<i>1</i>	<i>n 1/2 nw 1/4</i>	<i>20</i>	<i>26</i>	<i>15</i>	<i>80</i>	<i>✓ 1</i>	<i>2560</i>	<i>580</i>	<i>3140</i>
<i>Wm Rondenbrish</i>	<i>2</i>	<i>s 1/2 nw 1/4</i>				<i>80</i>		<i>2950</i>	<i>580</i>	<i>4210</i>
<i>do</i>		<i>n 1/2 nw 1/2 sw 1/4</i>				<i>20</i>		<i>680</i>		
<i>Joseph J. Dailery</i>	<i>3</i>	<i>w 1/2 n e 1/4</i>				<i>80</i>		<i>2600</i>	<i>550</i>	<i>3150</i>
<i>Samantha Young</i>	<i>4</i>	<i>n pt e 1/2 n e 1/4</i>				<i>24</i>		<i>710</i>	<i>30</i>	<i>740</i>
<i>Edward J. Gunhill</i>	<i>5</i>	<i>s pt e 1/2 n e 1/4</i>				<i>56</i>		<i>1760</i>	<i>450</i>	<i>4710</i>
<i>do</i>	<i>6</i>	<i>pt s 1/2 sw 1/4</i>				<i>7.3</i>	<i>50</i>	<i>2500</i>		
<i>Geo Shrank</i>	<i>7</i>	<i>w 1/2 s e 1/4</i>				<i>80</i>		<i>2730</i>		<i>6060</i>
<i>do</i>		<i>e 1/2 sw 1/4</i>				<i>80</i>		<i>2730</i>	<i>580</i>	
<i>Geo B. Jones</i>	<i>8</i>	<i>s pt w 1/2 sw 1/4</i>				<i>60</i>		<i>2060</i>	<i>500</i>	<i>2560</i>
<i>B. F. Daisy J. Brames</i>	<i>9</i>	<i>pt e 1/2 s e 1/4</i>				<i>3</i>		<i>110</i>	<i>80</i>	<i>190</i>
<i>Mary Snyder</i>	<i>10</i>	<i>s pt e 1/2 s e 1/4</i>				<i>3</i>		<i>110</i>	<i>90</i>	<i>200</i>
						<i>646</i>				

SECTION No. 20

Congressional Township No. 20, R. 13-

SCALE: Forty rods to an inch, or ten rods to a space, Congress Land, which is one mile square for a section.

Number of acres in this section, according to the United States Survey,.....

