

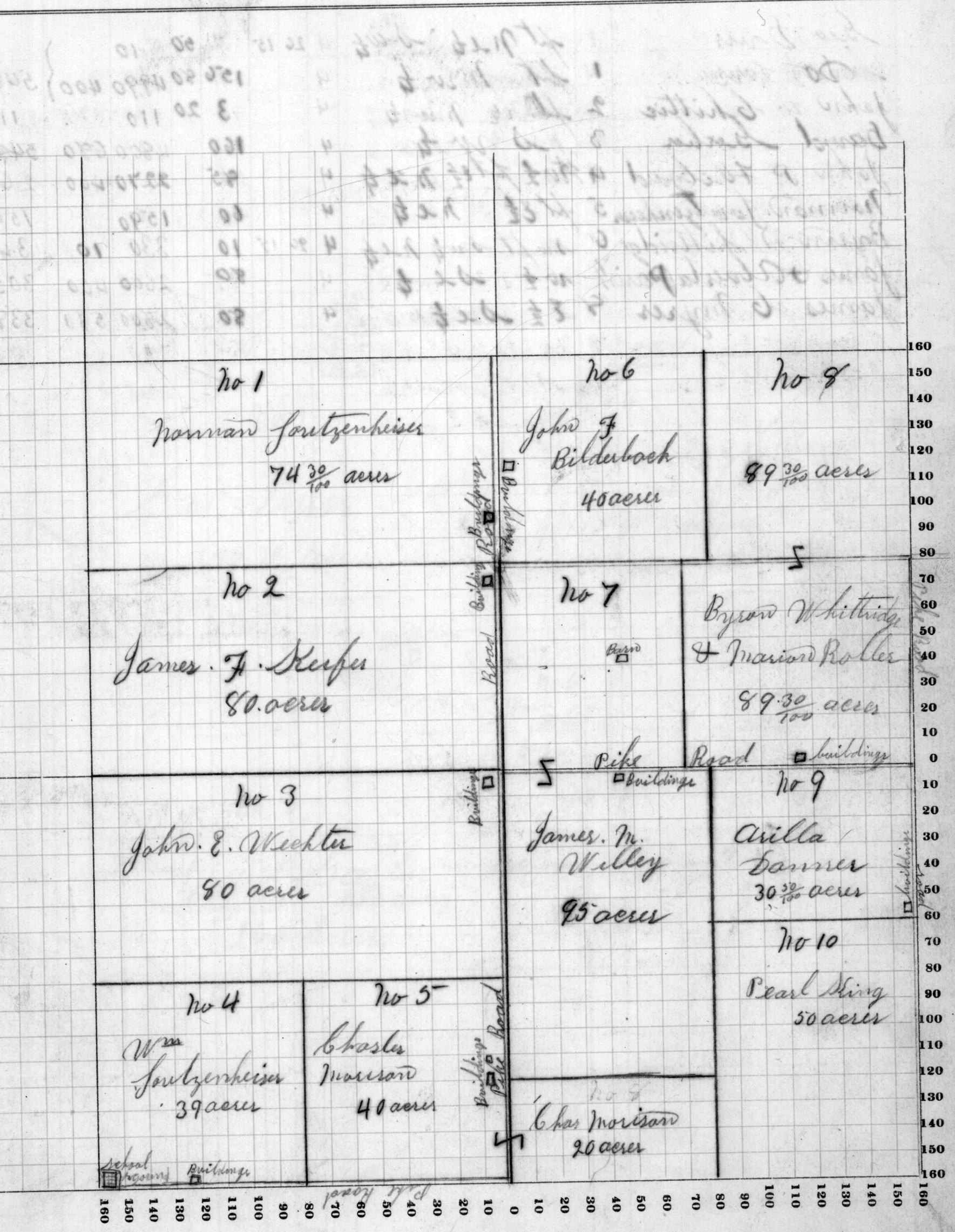
Assessor's Plat-Book for *Bluecreek*

Township, No. 26

NAMES OF OWNERS	Number on Plat	DESCRIPTION	Section	Township	Range	Acres	Hundredths	Value of Lands	Value of Improvements	Value of Lands and Improvements
Norman Jantzenheiser	1	NW 1/2 of NW 1/4	3	26	15	74	30	2250	580	2830
James F. Keifer	2	SW 1/4 NW 1/4				80		2780	550	3330
John E. Wechter	3	NE 1/4 SW 1/4				80		2850	590	3440
Mrs Jantzenheiser	4	SW 1/4				39		1340	120	1460
Chas Morrison	5	SE 1/4 ^{also SW 1/4 of SW 1/4} SW 1/4				60		2130	600	2730
John H. Bilderback	6	NW 1/4 NE 1/4				40		1340	170	1510
James M. Willey	7	SW 1/4 NE 1/4 pt NW 1/4 SE 1/4				95		3310	600	3910
Byron Whittredge et al	8	E 1/2 NE 1/4 pt SW 1/4 NE 1/4				89	30	3100	510	3610
Arilla Danner	9	NE 1/4 pt SE 1/4				30	50	1020	200	1220
Pearl King	10	SW 1/4 pt SE 1/4				50		1700		1700

SCALE: Forty rods to an inch, or ten rods to a space, Congress Land, which is one mile square for a section.

Number of acres in this section, according to the United States Survey,.....



COUNTY, INDIANA, 1915

Assessor's Plat-Book for

Blue creek

Township, No. 26

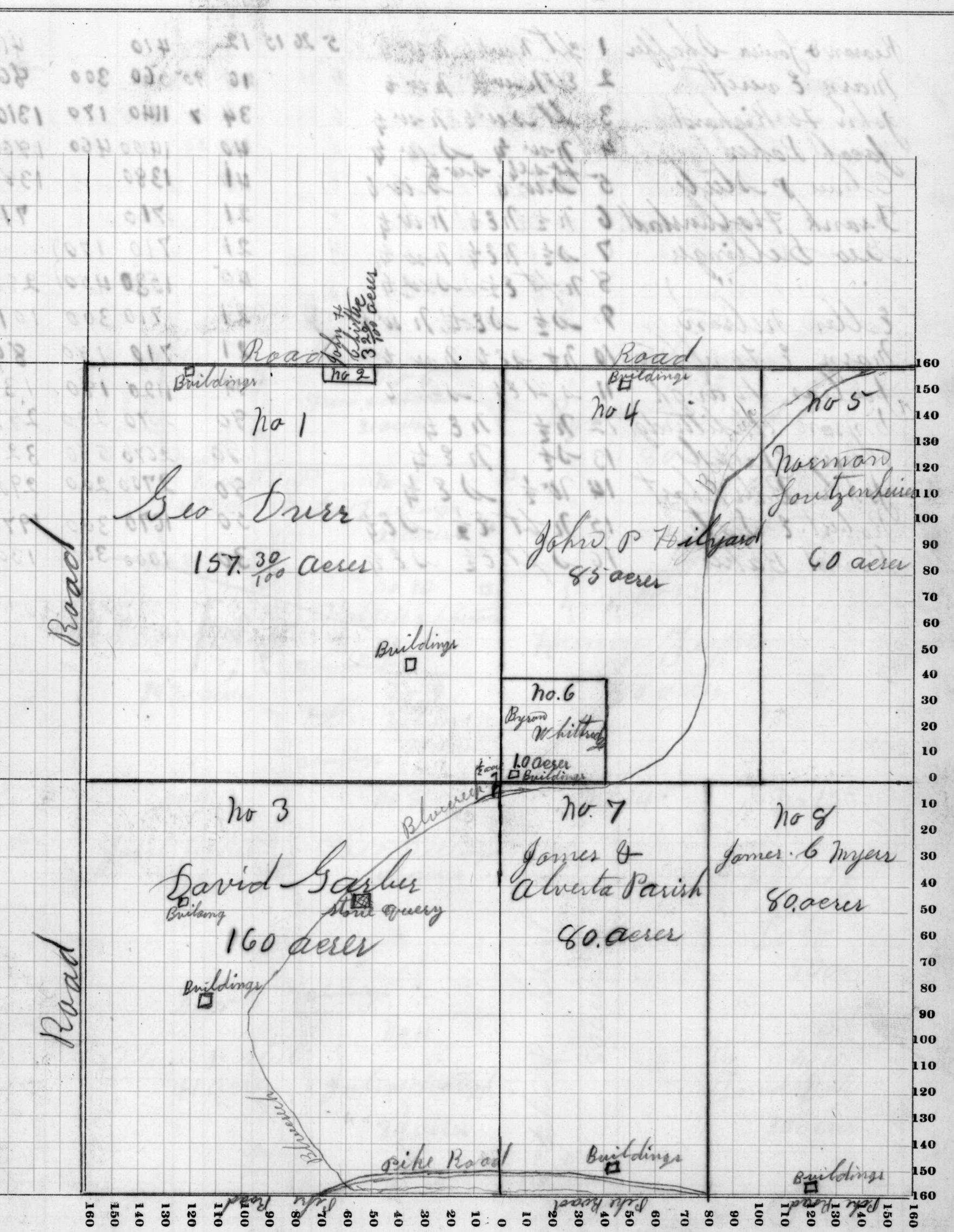
NAMES OF OWNERS	Number on Plat	DESCRIPTION	Section	Township	Range	Acres	Hundredths	Value of Lands	Value of Improvements	Value of Lands and Improvements
Geo Durr		pt n e $\frac{1}{4}$ s w $\frac{1}{4}$	4	26	15		50	10		5400
Geo Durr	1	pt n w $\frac{1}{4}$	4			156	80	4990	400	
John W Chittie	2	pt n e n w $\frac{1}{4}$	4			3	20	110		110
David Gerber	3	s w $\frac{1}{4}$	4			160		4800	680	5480
John P Holbyard	4	pt e $\frac{1}{2}$ pt e $\frac{1}{2}$ n e $\frac{1}{4}$	4			95		2270	400	2670
Norman Joutzenheim	5	pt e $\frac{1}{2}$ n e $\frac{1}{4}$	4			60		1590		1590
Byron W Pittbridge	6	su pt s w $\frac{1}{4}$ n e $\frac{1}{4}$	4	26	15	10		330	10	340
James & Alberta Parish	7	w $\frac{1}{2}$ s e $\frac{1}{4}$	4			80		2600	450	3050
James C Myers	8	e $\frac{1}{2}$ s e $\frac{1}{4}$	4			80		2800	580	3380

SECTION No. 4

Congressional Township No. 26, R. 15

SCALE: Forty rods to an inch, or ten rods to a space, Congress Land, which is one mile square for a section.

Number of acres in this section, according to the United States Survey,.....



Assessor's Plat-Book for

Blue Creek

Township, No. 26

NAMES OF OWNERS	Number on Plat	DESCRIPTION	Section	Township	Range	Acres	Hundredths	Value of Lands	Value of Improvements	Value of Lands and Improvements
<i>Reoran & Louisa Schaffer</i>	1	<i>wpt nw 1/4 nw 1/4</i>	5	26	15	12		410		410
<i>Mary Everett</i>	2	<i>eft nw 1/4 nw 1/4</i>				16	95	560	300	860
<i>John & Richard</i>	3	<i>ft sw 1/4 nw 1/4</i>				34	7	1140	170	1310
<i>Jacob Baker</i>	4	<i>nw 1/4 sw 1/4</i>				40		1400	460	1860
<i>Oliver P. Stule</i>	5	<i>ft s 1/2 sw 1/4 sw 1/4</i>				41		1380		1380
<i>Frank Halburstadt</i>	6	<i>n 1/2 ne 1/4 nw 1/4</i>				21		710		710
<i>Geo Sellinger</i>	7	<i>s 1/2 ne 1/4 nw 1/4</i>				21		710	170	
" "	8	<i>n pt e 1/2 sw 1/4</i>				45		1530	450	2860
<i>Ellen Nelson</i>	9	<i>s 1/2 se 1/4 nw 1/4</i>				21		710	300	1010
<i>Mary E. Forffman</i>	10	<i>n 1/2 se 1/4 nw 1/4</i>				21		710	180	890
<i>Julias Forugh</i>	11	<i>s pt e 1/2 sw 1/4</i>				34		1120	180	1300
<i>Byron Whittridge</i>	12	<i>n 1/2 ne 1/4</i>				80		2670	200	2870
<i>Henry J. Jeph</i>	13	<i>s 1/2 ne 1/4</i>				80		2670	580	3250
<i>John Burkhart</i>	14	<i>w 1/2 se 1/4</i>				80		2700	200	2900
<i>Robert E. Doty</i>	15	<i>n pt e 1/2 se 1/4</i>				50		1670	300	1970
<i>David Baker</i>	16	<i>s pt. e 1/2 se 1/4</i>				30		1000	300	1300

627

SECTION No. 5

Congressional Township No. 26 N, R. 15 W

SCALE: Forty rods to an inch, or ten rods to a space, Congress Land, which is one mile square for a section.

Number of acres in this section, according to the United States Survey,

