

Assessor's Plat-Book for

Blue Creek

Township, No. 26

NAMES OF OWNERS	Number on Plat	DESCRIPTION	Section	Township	Range	Acres	Hundredths	Value of Lands	Value of Improvements	Value of Lands and Improvements
Peter E. Habegger & Emanuel J. Fischer	1	pt ne ¼	32	26	15	127	50	4490	550	5040
Maggie C. Cottrell	2	pt se ¼ ne ¼				32		1060	150	1210
John Cross	3	w ½ ne ¼				80		2700	380	3080
Samantha Agler	4	w ½ ne ¼ ne ¼				20		670		2120
do	4½	pt se ¼ sw ¼				30		1050	400	
Wm. C. Gellespie	5	e ½ ne ¼ ne ¼				20		640		640
James Frank	6	se ¼ ne ¼				40		1330		1330
Samuel Frank	7	pt ne ¼ se ¼				32		1060		1060
Edward Foreman	8	mid pt e ½ se ¼				32		1060		1060
John M. Parr	9	s pt e ½ se ¼				16		540	600	1140
Wm. A. Sipe	10	w ½ se ¼				80		2750	550	3300
Frederic J. Gregory	11	ne pt sw ¼				79		2660	300	2960
Myrtle M. Hammond	12	pt sw ¼				3	50	120	100	220
Minerva J. McDaniel	13	pt sw ¼				3	50	120	100	220
Ezra Habegger	14	sw ¼ sw ¼				42		1450	220	1670
Horlan Agler	15	mid pt s ½ sw ¼				1	68	40		40

SECTION No. 32

Congressional Township No. 26, R. 13-

SCALE: Forty rods to an inch, or ten rods to a space, Congress Land, which is one mile square for a section.

Number of acres in this section, according to the United States Survey,.....



Assessor's Plat-Book for

*Blues Creek*

Township, No. 26

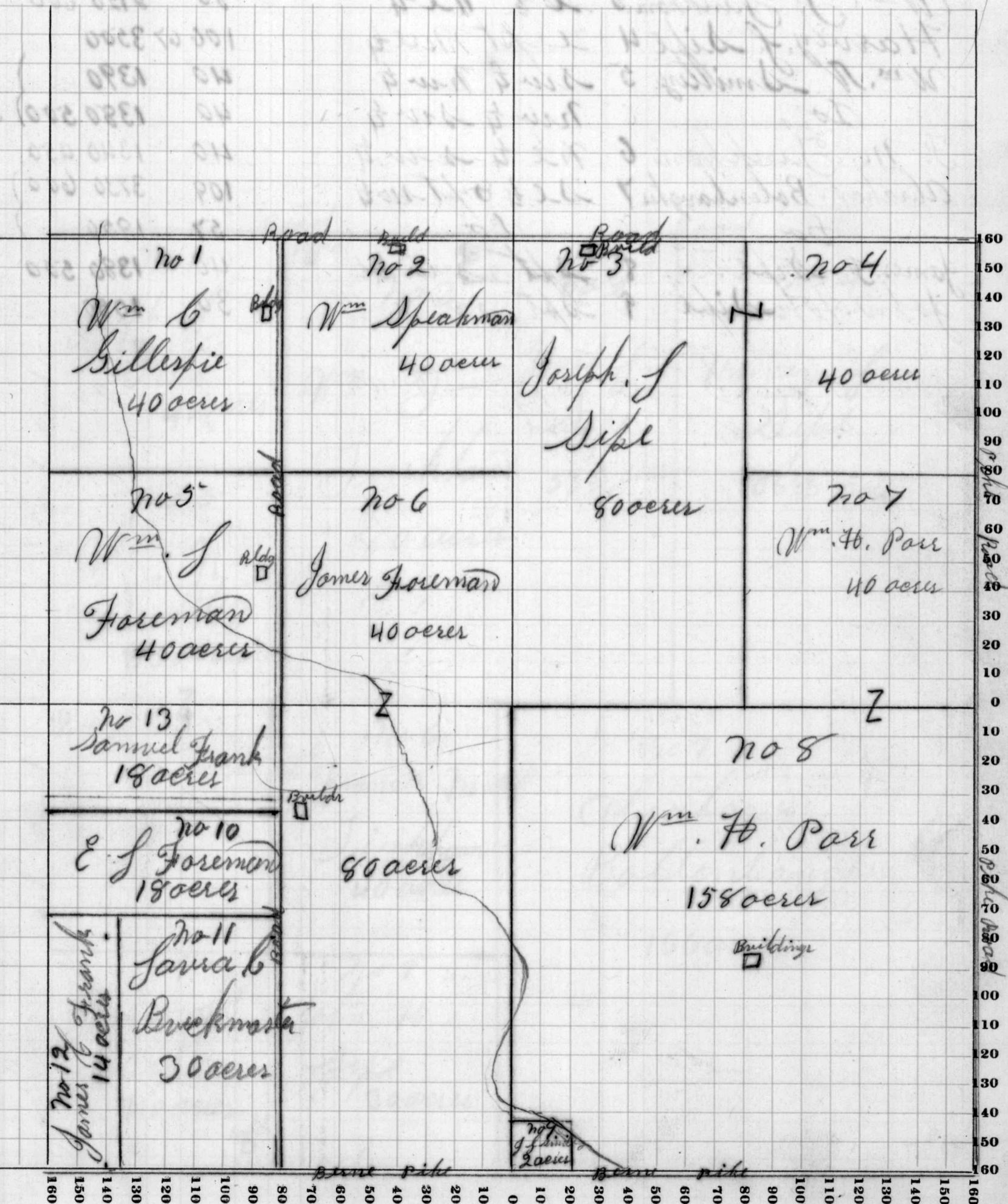
NAMES OF OWNERS	Number on Plat	DESCRIPTION	Section	Township	Range	Acres	Hundredths	Value of Lands	Value of Improvements	Value of Lands and Improvements
<i>Wm C Gillespie</i>	<i>1</i>	<i>nw ¼ nw ¼</i>	<i>33</i>	<i>24</i>	<i>15</i>	<i>40</i>		<i>1320</i>	<i>300</i>	<i>1620</i>
<i>Wm Speakman</i>	<i>2</i>	<i>ne ¼ nw ¼</i>				<i>40</i>		<i>1350</i>	<i>280</i>	<i>1630</i>
<i>Joseph J Sipe</i>	<i>3</i>	<i>w ½ ne ¼</i>				<i>80</i>		<i>2720</i>	<i>580</i>	<i>4660</i>
<i>Do</i>	<i>4</i>	<i>ne ¼ ne ¼</i>				<i>40</i>		<i>1360</i>		
<i>Wm J Foreman</i>	<i>5</i>	<i>sw nw ¼</i>				<i>40</i>		<i>1320</i>	<i>400</i>	<i>1720</i>
<i>James Foreman</i>	<i>6</i>	<i>se nw ¼</i>				<i>40</i>		<i>1340</i>		<i>4600</i>
<i>Do</i>		<i>e ½ sw ¼</i>				<i>80</i>		<i>2660</i>	<i>600</i>	
<i>Wm H. Parr</i>	<i>7</i>	<i>se ¼ ne ¼</i>				<i>40</i>		<i>1380</i>		<i>7440</i>
<i>Do</i>	<i>8</i>	<i>se ¼</i>				<i>158</i>		<i>5460</i>	<i>600</i>	
<i>Jess. J Smalley</i>	<i>9</i>	<i>sw corner se ¼</i>				<i>2</i>		<i>70</i>	<i>280</i>	<i>350</i>
<i>Edward Foreman</i>	<i>10</i>	<i>npt w ½ sw ¼</i>				<i>18</i>		<i>610</i>	<i>550</i>	<i>1160</i>
<i>Laurie C Buckmaster</i>	<i>11</i>	<i>lft sw ¼ sw ¼</i>				<i>30</i>		<i>1020</i>	<i>400</i>	<i>1420</i>
<i>James C Frank</i>	<i>12</i>	<i>wpt sw ¼ sw ¼</i>				<i>14</i>		<i>490</i>		<i>490</i>
<i>Samuel Frank</i>	<i>13</i>	<i>npt nw ¼ sw ¼</i>				<i>18</i>		<i>600</i>	<i>300</i>	<i>900</i>

SECTION No. 33

Congressional Township No. 29, R. 15

SCALE: Forty rods to an inch, or ten rods to a space, Congress Land, which is one mile square for a section.

Number of acres in this section, according to the United States Survey,.....



Assessor's Plat-Book for

*Blue Creek*

Township, No. *26*

NAMES OF OWNERS	Number on Plat	DESCRIPTION	Section	Township	Range	Acres	Hundredths	Value of Lands	Value of Improvements	Value of Lands and Improvements
<i>Joseph J Sipe</i>	<i>1</i>	<i>nw 1/4 nw 1/4</i>	<i>34</i>	<i>26</i>	<i>15</i>	<i>40</i>		<i>1370</i>	<i>200</i>	<i>3370</i>
<i>Do</i>	<i>2</i>	<i>pt w 1/2 ne 1/4</i>				<i>53</i>	<i>33</i>	<i>1800</i>		
<i>Wm J Jinkham</i>	<i>3</i>	<i>e 1/2 ne 1/4</i>				<i>80</i>		<i>2720</i>	<i>600</i>	<i>3320</i>
<i>Harvey J Sipe</i>	<i>4</i>	<i>e pt ne 1/4</i>				<i>106</i>	<i>67</i>	<i>3500</i>		<i>3500</i>
<i>Wm W Smitley</i>	<i>5</i>	<i>sw 1/4 nw 1/4</i>				<i>40</i>		<i>1390</i>		<i>3270</i>
<i>Do</i>		<i>nw 1/4 sw 1/4</i>				<i>40</i>		<i>1380</i>	<i>500</i>	
<i>F. M. Jinkham</i>	<i>6</i>	<i>ne 1/4 sw 1/4</i>				<i>40</i>		<i>1340</i>	<i>450</i>	<i>1790</i>
<i>Abraham Bolenbaugh</i>	<i>7</i>	<i>se 1/4 &amp; pt sw 1/4</i>				<i>109</i>		<i>3730</i>	<i>600</i>	<i>6280</i>
<i>Do</i>		<i>do</i>				<i>57</i>		<i>1950</i>		
<i>James J Sipe</i>	<i>8</i>	<i>pt sw 1/4</i>				<i>40</i>		<i>1380</i>	<i>500</i>	<i>1880</i>
<i>John W Sipe</i>	<i>9</i>	<i>pt sw 1/4</i>				<i>30</i>		<i>1050</i>		<i>1050</i>

SECTION No. 34

Congressional Township No. 26, R. 13-

SCALE: Forty rods to an inch, or ten rods to a space, Congress Land, which is one mile square for a section.

Number of acres in this section, according to the United States Survey, .....

