

Assessor's Plat-Book for

*Bluecreek*

Township, No. *26*

NAMES OF OWNERS	Number on Plat	DESCRIPTION	Section	Township	Range	Acres	Hundredths	Value of Lands	Value of Improvements	Value of Lands and Improvements
<i>Selvester Campbell</i>	<i>1</i>	<i>w 1/2 nw 1/4 nw 1/4</i>	<i>9</i>	<i>26</i>	<i>15</i>	<i>20</i>	<i>✓</i>	<i>660</i>	<i>280</i>	<i>940</i>
<i>Marie Brandt</i>	<i>2</i>	<i>pt n 1/2 nw 1/4</i>				<i>45</i>	<i>✓</i>	<i>1400</i>	<i>200</i>	<i>2520</i>
<i>do</i>		<i>pt w 1/4 n e 1/4</i>				<i>20</i>	<i>✓</i>	<i>670</i>	<i>250</i>	
<i>Drye Ferguson</i>	<i>4</i>	<i>E 1/2 n e 1/4 pt sw 1/4 n e 1/4</i>	<i>9</i>	<i>26</i>	<i>15</i>	<i>112</i>		<i>3550</i>	<i>630</i>	<i>4180</i>
<i>Wm O Myers</i>	<i>3</i>	<i>e pt nw 1/4 n e 1/4</i>				<i>30</i>	<i>✓</i>	<i>960</i>	<i>300</i>	<i>1260</i>
<i>Carroll Joutzenhiser</i>	<i>5</i>	<i>w pt s 1/2 nw 1/4</i>				<i>50</i>	<i>✓</i>	<i>1680</i>	<i>440</i>	<i>2120</i>
<i>Miles W Hamrick</i>	<i>6</i>	<i>pt s e 1/4 nw 1/4</i>				<i>35</i>		<i>1580</i>		<i>1300</i>
<i>do</i>		<i>pt sw 1/4 n e 1/4</i>				<i>3</i>		<i>50</i>		
<i>do</i>		<i>pt s w 1/4 n e 1/4</i>				<i>5</i>		<i>70</i>		
<i>Frank Young</i>	<i>7</i>	<i>nw 1/4 s w 1/4</i>				<i>40</i>	<i>✓</i>	<i>1340</i>	<i>280</i>	<i>1620</i>
<i>James F Oakley</i>	<i>8</i>	<i>pt nw 1/4 s e 1/4</i>				<i>3</i>	<i>✓</i>	<i>100</i>	<i>140</i>	<i>1480</i>
<i>do</i>		<i>pt n e 1/4 sw 1/4</i>				<i>37</i>	<i>50</i>	<i>1240</i>		
<i>do</i>		<del><i>pt s 1/2 sw 1/4</i></del>				<del><i>7</i></del>				
<i>J. B. Oakley</i>	<i>9</i>	<i>n e 1/4 s e 1/4</i>				<i>40</i>		<i>1170</i>		<i>2910</i>
<i>do</i>		<i>pt w 1/2 s e 1/4</i>				<i>77</i>		<i>2340</i>	<i>400</i>	
<i>Robert F Boyer et al</i>	<i>10</i>	<i>sw 1/4 sw 1/4</i>				<i>40</i>	<i>✓</i>	<i>1360</i>	<i>590</i>	<i>1950</i>
<i>Wm W Harper</i>	<i>11</i>	<i>pt E 1/2 sw 1/4</i>				<i>22</i>	<i>50</i>	<i>750</i>	<i>140</i>	<i>890</i>
<i>Jahro M Myers</i>	<i>12</i>	<i>s e 1/4 s e 1/4</i>				<i>40</i>	<i>✓</i>	<i>1170</i>	<i>220</i>	<i>1390</i>
<i>Mary E Young</i>	<i>13</i>	<i>s 1/2 s e 1/4 sw 1/4</i>				<i>20</i>	<i>✓</i>	<i>680</i>	<i>80</i>	<i>760</i>

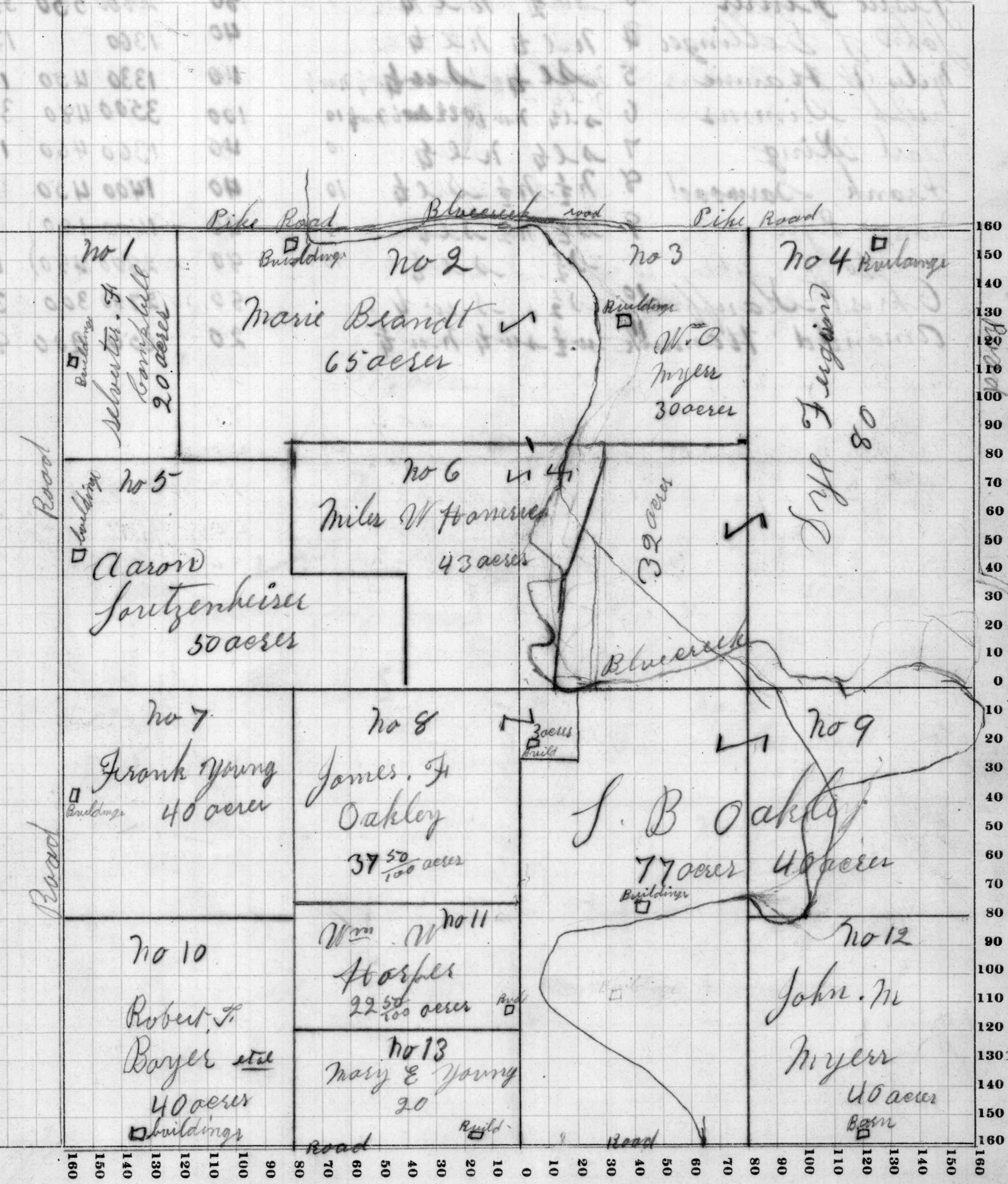
*640*

SECTION No. 9

Congressional Township No. 26, R. 15-

SCALE: Forty rods to an inch, or ten rods to a space, Congress Land, which is one mile square for a section.

Number of acres in this section, according to the United States Survey,.....





Assessor's Plat-Book for Bluecrup Township, No. \_\_\_\_\_

NAMES OF OWNERS	Number on Plat	DESCRIPTION	Section	Township	Range	Acres	Hundredths	Value of Lands	Value of Improvements	Value of Lands and Improvements
Char Passwater	1	nw 1/4 nw 1/4	10	26	15	40		1400	450	1850
Char Morrison	2	pt e 1/2 nw 1/4 pt ne 1/4 nw 1/4				39	50	1370		1370
Lestie Flurer	3	w 1/2 ne 1/4				80		2800	550	3350
John J Selliger	4	ne 1/4 ne 1/4				40		1360		1360
Mel W & Annie	5	ne 1/4 sw 1/4 nw 1/4				40		1330	450	1780
Joseph Dimms	6	ne 1/4 nw 1/4 se 1/4 nw 1/4	10			100		3500	480	3980
Pearl King	7	se 1/4 ne 1/4	10			40		1360	460	1820
Frank Barnwood	8	ne 1/4 ne 1/4 se 1/4	10			40		1400	450	1850
Monroe Byler	9	se 1/4 ne 1/4 se 1/4	10			40		1400	100	4780
do		se 1/4 se 1/4	10			80		2800	480	
Christ Stauffman	10	se 1/4 sw 1/4				80		2780	300	3080
Amanda Hamrick		w 1/2 sw 1/4 nw 1/4				20		650	200	850

# SECTION No. 10

Congressional Township No. 26, R. 15

SCALE: Forty rods to an inch, or ten rods to a space, Congress Land, which is one mile square for a section.

Number of acres in this section, according to the United States Survey, .....

