

Adams

COUNTY, INDIANA, 1907.

Assessor's Plat-Book for

Blue Creek

Township, No.

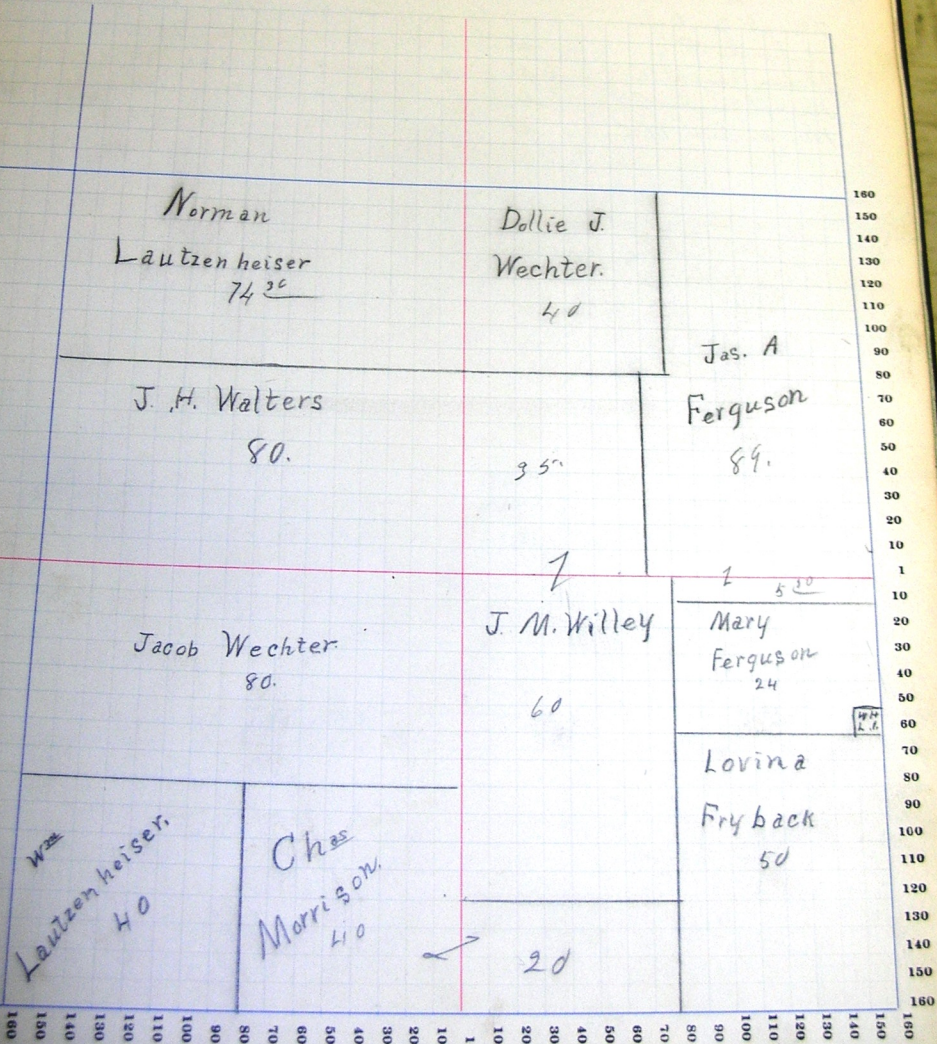
OFFICIAL RECORD BOOK, No. INDIANAPOLIS

NAMES OF OWNERS.	Number on Plat.	DESCRIPTION.	Section.	Township.	Range.	Acres.	Hundredths.	Value of Lands.	Value of Improvements.	Value of Lands and Improvements.
Ferguson James A.		pt s $\frac{1}{2}$ ne	3	26	15	49	30	1396		
do		ne ne	3			40		1140	250	
do		npt s $\frac{1}{2}$ se	3			5	50	114		
Wichter Jacob		pt w $\frac{1}{2}$ sw	3			60		1740	600	
do		s $\frac{1}{2}$ ne sw	3			20		580		
Willey James M.		pt w $\frac{1}{2}$ se	3			60		1740	800	
do		pt w $\frac{1}{2}$ ne	3			35		947		
Wichter Dollie J.		nw ne	3			40		1050	150	
Walters John H.		se nw	3			40		1120	200	
do		sw nw	3			40		1120		
Lautzenheiser Norman		ne nw	3			37	15	1036	500	
do		nw nw	3			37	15	976		
Lautzenheiser W. W.		sw sw	3			39		1092	40	
Trigback Lavina		pt e $\frac{1}{2}$ se	3			50		1425	50	
Ferguson Mary		spt ne se	3			24		684		
Mobison Chas		s $\frac{1}{2}$ e $\frac{1}{2}$ sw	3			40		1140	850	
do		sw sw se	3			20		570		
Langbery Willis H.		spt ne se	3			1		28	50	

SECTION No. 3

Congressional Township No. 26, R. 15

SCALE—Forty rods to an inch, or ten rods to a space, Congress Land, which is one mile square for a section.
 Number of acres in this section, according to the United States Survey,



Adams

COUNTY, INDIANA, 1907.

Assessor's Plat-Book for

Blue Creek

Township, No. 26

IND. & NAT. BLDG. FOR R.P. SHAWNEE

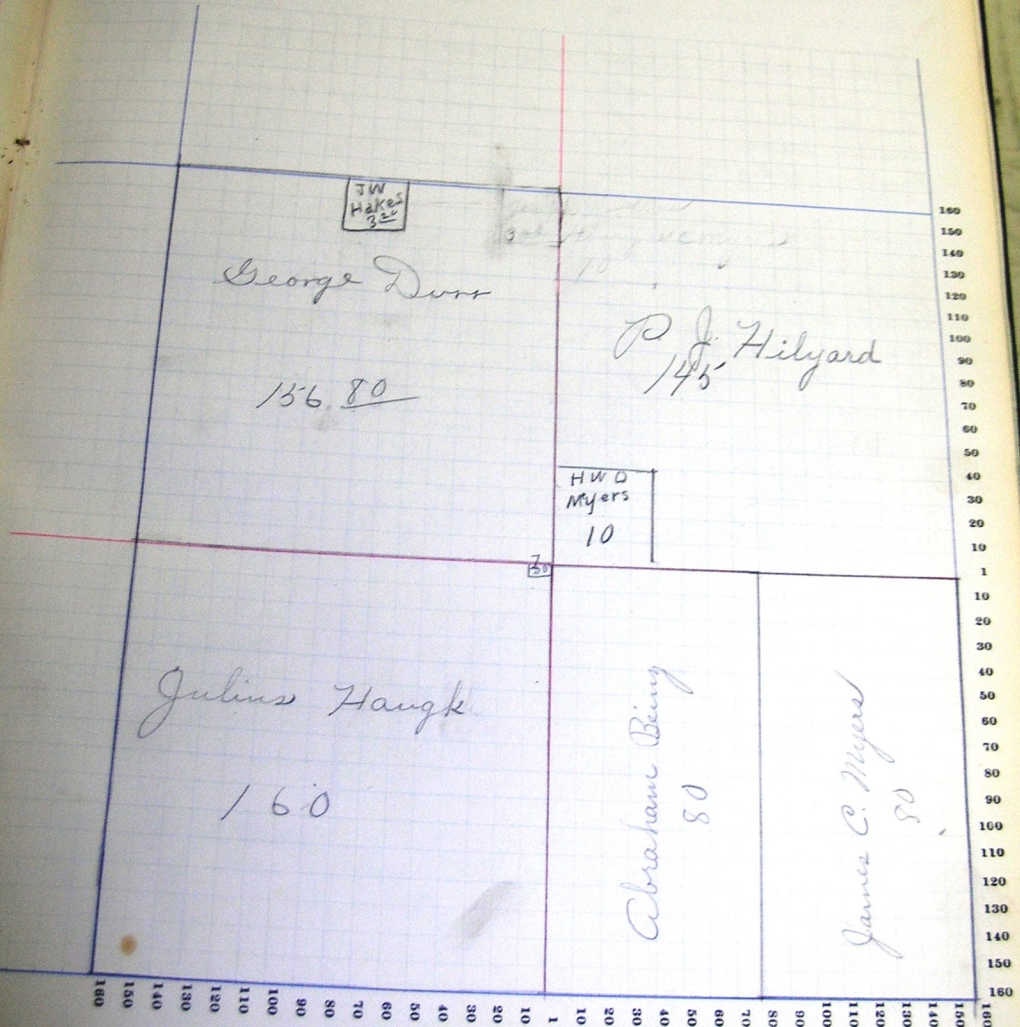
NAMES OF OWNERS.	Number on Plat.	DESCRIPTION.	Section.	Township.	Range.	Acres.	Hundredths.	Value of Land.	Value of Improvements.	Value of Land and Improvements.
Being Abraham W.		w ₂	se	4	26/15	88		2065	100	
Dobbs George		pt	ne	sw	4	50				
or		pt	nw	4	156	80	3767	200		
Faugh Julius		sw	4	160	3840	400				
Hilyard P. J.		pt	ne	4	145	150	150			
Hakes Joseph W.		pt	nw	4	3	20	85	50		
Myers James C.		sw	se	4	80	2240	350			
Myers Henry W. C.		pt	ne	4	10	200				

SECTION No. 4

Congressional Township No. _____, R. _____

SCALE—Forty rods to an inch, or ten rods to a space, Congress Land, which is one mile square for a section.
Number of acres in this section, according to the United States Survey.

Value of
Land and
Improvements



JW
Hakes
30

George Durr

156.80

P. J. Hilyard
145

HWO
Myers
10

Julius Haugk

160

Abraham Beiny
80

James C. Myers
80

180
170
160
150
140
130
120
110
100
90
80
70
60
50
40
30
20
10
1
10
20
30
40
50
60
70
80
90
100
110
120
130
140
150
160
170
180

180
170
160
150
140
130
120
110
100
90
80
70
60
50
40
30
20
10
1

COUNTY, INDIANA, 1907.

Assessor's Plat-Book for *Blue Creek*

Township, No. *36*

See a. 10000. 2000. 1000. 1000.

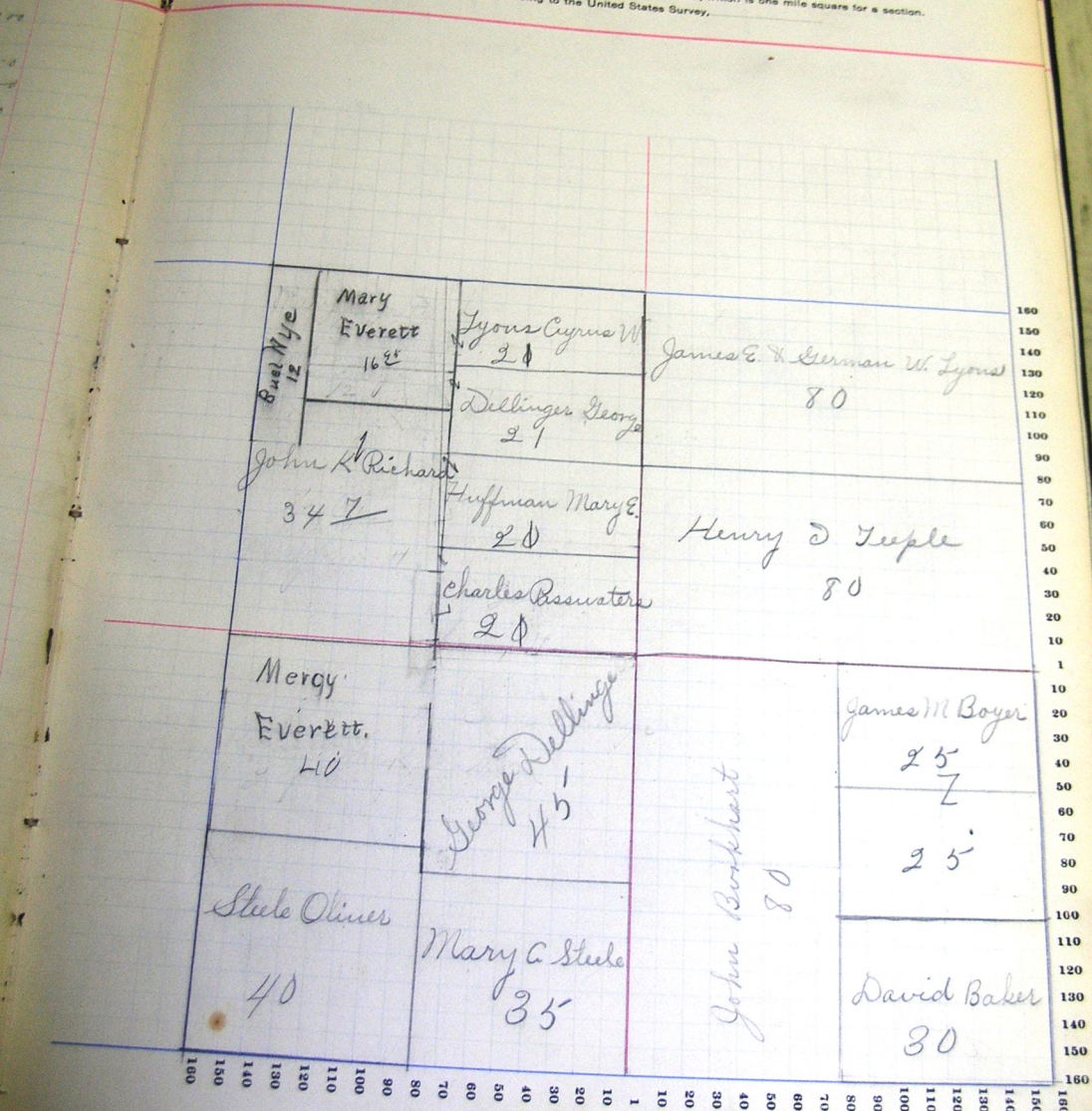
NAME OF OWNERS.	Number on Plat.	DESCRIPTION.	Section.	Township Range.	Acres.	Homestead.	Value of Land.	Value of Improvements.	Value of Land and Improvements.
Boyer James m		pt ne se	5	26 15 25			67	300	
Boyer James m		nd pt e ₂ se	5		25		67		
Boskhardt John		w ₂ se	5		30		2160	150	
Baker David		pt se	5		30		525	250	
Dellinger George		pt e ₂ sw	5		45		1215	400	
Dellinger George		pt nw	5		21		525		
Everett Mary		pt nw nw	5		16 95		459	200	
Everett Mercy		nw sw	5		40		1050	500	
Huffman Mary E.		w ₂ se nw	5		20		540	50	
Huffman Mary E.		pt sw nw	5		1		27		
Lyon Cyrus W.		pt ne nw	5		20		500	80	
Lyon Cyrus W.		pt nw nw	5		1		27		
Lyon James E. & Lerman W.		w ₂ ne	5		80		2160	100	
Buel Nye		pt nw nw	5		12		380		
Passwater Charles		e ₂ se nw	5		20		540	200	
Passwater Charles		pt sw nw	5		1		27		
Richard John K.		pt sw nw	5		29 7		793	80	
Richard John K.		pt nw nw	5		5		135		
Steele Mary A.		pt e ₂ sw	5		35		962	150	
Steele Oliver		sw sw	5		40		1120	80	
Teuple Henry D		e ₂ ne	5		80		2160	300	

SECTION No. 5

Congressional Township No. , R.

SCALE—Forty rods to an inch, or ten rods to a space, Congress Land, which is one mile square for a section. Number of acres in this section, according to the United States Survey.

Value of Improvements



Adams

COUNTY, INDIANA, 1907.

Assessor's Plat-Book for

Blue Creek

Township, No. 26

See a. Section 26, page 27, 28, 29, 30, 31, 32, 33, 34, 35, 36, 37, 38, 39, 40, 41, 42, 43, 44, 45, 46, 47, 48, 49, 50, 51, 52, 53, 54, 55, 56, 57, 58, 59, 60, 61, 62, 63, 64, 65, 66, 67, 68, 69, 70, 71, 72, 73, 74, 75, 76, 77, 78, 79, 80, 81, 82, 83, 84, 85, 86, 87, 88, 89, 90, 91, 92, 93, 94, 95, 96, 97, 98, 99, 100.

NAMES OF OWNERS	Number of Pts.	DESCRIPTION.	Section	Township	Range	Acres.	Homesteads	Value of Land.	Value of Improvements.	Value of Land and Improvements
Stude Oliver		se	se	6	26/15	40		1140	80	
Brown Rosa		npt $\frac{1}{2}$	sw	6		45		1215	80	
or		npt ne	sw	6		7		190		
Hopple Henry		se	ne	6		40		1097	475	
Hook Emma		ne	se	6		48		1150	470	
Harman Sarah J.		spt $\frac{1}{2}$	sw	6		27		756	150	
Jacobs Margaret			nw	6		160		4360	470	
Rye Johnson		pt $\frac{1}{2}$	sw	6		72	41	1974	450	
Riley Lydia		$\frac{1}{2}$	se	6		80		2270	470	
Williams L. E. & Eliza 2		pt $\frac{1}{2}$	nw	6		20		550	450	
Williams L. R.		pt $\frac{1}{2}$	sw	6		60		1650	370	
Davis Charles		sw	ne	6		40		1040	50	

SECTION No. 6

Congressional Township No. 26, R.

SCALE—Forty rods to an inch, or ten rods to a space, Congress Land, which is one mile square for a section.
Number of acres in this section, according to the United States Survey,

Value of
Land and
Improvements



Adams

COUNTY, INDIANA, 1907.

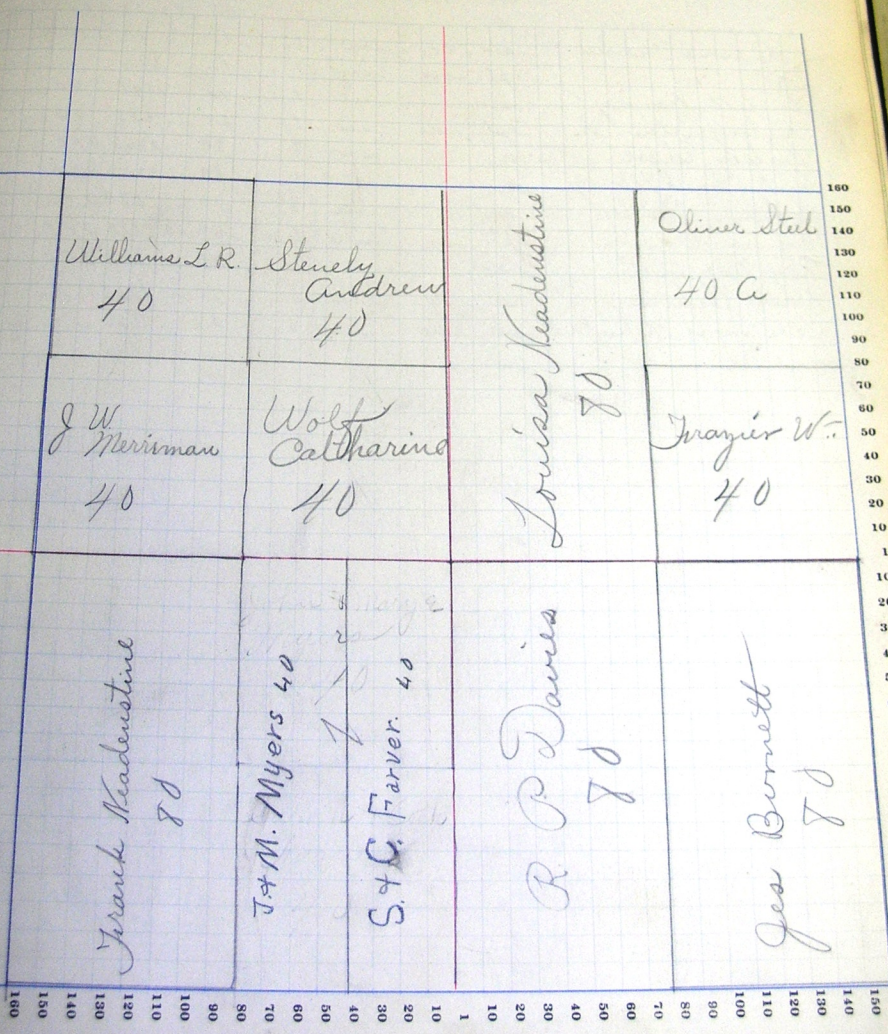
Assessor's Plat-Book for

Blue Creek

Township, No. 26

NAMES OF OWNERS	Number of Pts.	DESCRIPTION.		Section	Township	Range	Acres.	Hundredths	Value of Land.	Value of Improvements.	Value of Lends and Improvements.
Stule Oliver		ne	ne	9	16	5	40	1140	550		
William L. R.		nw	nw	7			40	1150	250		
Bonnett Jas		$\frac{1}{2}$	se	7			80	2120	350		
Davis R. P.		$\frac{1}{2}$	se	7			80	2160	850		
Frazier W...		se	ne	7			40	1040	250		
Farmer Sarah & Cath L.		$\frac{1}{2}$	$\frac{1}{2}$	sw	7		40	1080	80		
Merriman J. W.		sw	nw	7			40	1190	450		
Myers John M. & Mary E.		$\frac{1}{2}$	$\frac{1}{2}$	sw	7		40	1080	250		
Madeline Lavinia		$\frac{1}{2}$	ne	7			80	2560	150		
Madeline Frank		$\frac{1}{2}$	sw	7			80	2170	600		
Sturdy Andrew		$\frac{1}{2}$	$\frac{1}{2}$	nw	7		40	1120	350		
Wolf Catherine		$\frac{1}{2}$	$\frac{1}{2}$	nw	7		40	1120	40		

SCALE—Forty rods to an inch, or ten rods to a space, Congress Land, which is one mile square for a section.
Number of acres in this section, according to the United States Survey.



Value of
Land and
Improvements

160
150
140
130
120
110
100
90
80
70
60
50
40
30
20
10
1
10
20
30
40
50
60
70
80
90
100
110
120
130
140
150

Adams

COUNTY, INDIANA, 1907.

Assessor's Plat-Book for

Blue Creek

Township, No. 26

NAMES OF OWNERS.	Number of Plat.	DESCRIPTION.	Acres.	Township-Range.	Acres.	Number of Lots.	Value of Lands.	Value of Improvements.	Value of Lands and Improvements.
Cushcraft Thomas		ne se	8	26	15	40	1880	180	
Baughman A. B.		w pt se sw	8		14	37	378		
		nw se	8		40		1880	88	
Commins W.		pt nw	8		93	75	2529	380	
Davis Charles		sw cor sw	8		1		80	200	
		pt sw sw	8		12		324		
Everett Barney		sw ne	8		40		1880	80	
Kelsey Arthur S.		e pt se sw	8		25		675	50	
Kelsey Edgar		n 1/2 sw	8		80		2160	400	
Lantzchuiser Elbridge		n 1/2 ne	8		80		2200	350	
Woringer Charles		se ne	8		40		1880	200	
William Ida M.		pt e 1/2 nw	8		66	25	1815	150	
Ray Mary A. et al		sw se	8		39	50	883	200	
Davy Joshua		se se	8		40		1880		
DeArmond Malinda et al		pt sw sw	8		28		756		

NAMES OF OWNERS.	Number of Plats.	DESCRIPTION.	Section.	Township.	Range.	Acres.	Hindshills.	Value of Lands.	Value of Improvements.	Value of Lands and Improvements.
Grant Marie		pt nw nw	9	26	15	55		137	400	
do		pt nw ne	9			10		275		
Blossom L. R.		sw sw	9			40		1060	400	
Sampbell Sylvester		ne nw nw	9			20		550	250	
Ferguson Lyle		se nw	9			80		2240	700	
do		pt sw ne	9			87		836		
Harper Sarah		pt e ₂ sw	9			15		405		
Farper W. W.		pt e ₂ sw	9			15		405	50	
Farper Thomas W.		pt se nw	9			35		875		
Lantzenheiser Aaron		wpt nw	9			50		1330	150	
Myers W. O.		spt nw ne	9			80		420	200	
Myers Jacob		se se	9			40		1026	400	
Oakley James J.		pt nw se	9			3		60	100	
Oakley L. B.		ne se	9			40		1040		
do		pt w ₂ se	9			77		1730	850	
Young Frank		nw sw	9			40		1080	50	
Young Mary E.		se se	9			20		510	100	
Harbrie Miles W.		pt meud e ₂ sw	9			30		780		

SECTION No. 9

Congressional Township No. 26, R.

SCALE—Forty rods to an inch, or ten rods to a space, Congress Land, which is one mile square for a section. Number of acres in this section, according to the United States Survey.



Adams

COUNTY, INDIANA, 1907.

Assessor's Plat-Book for Blue Creek Township, No. 26

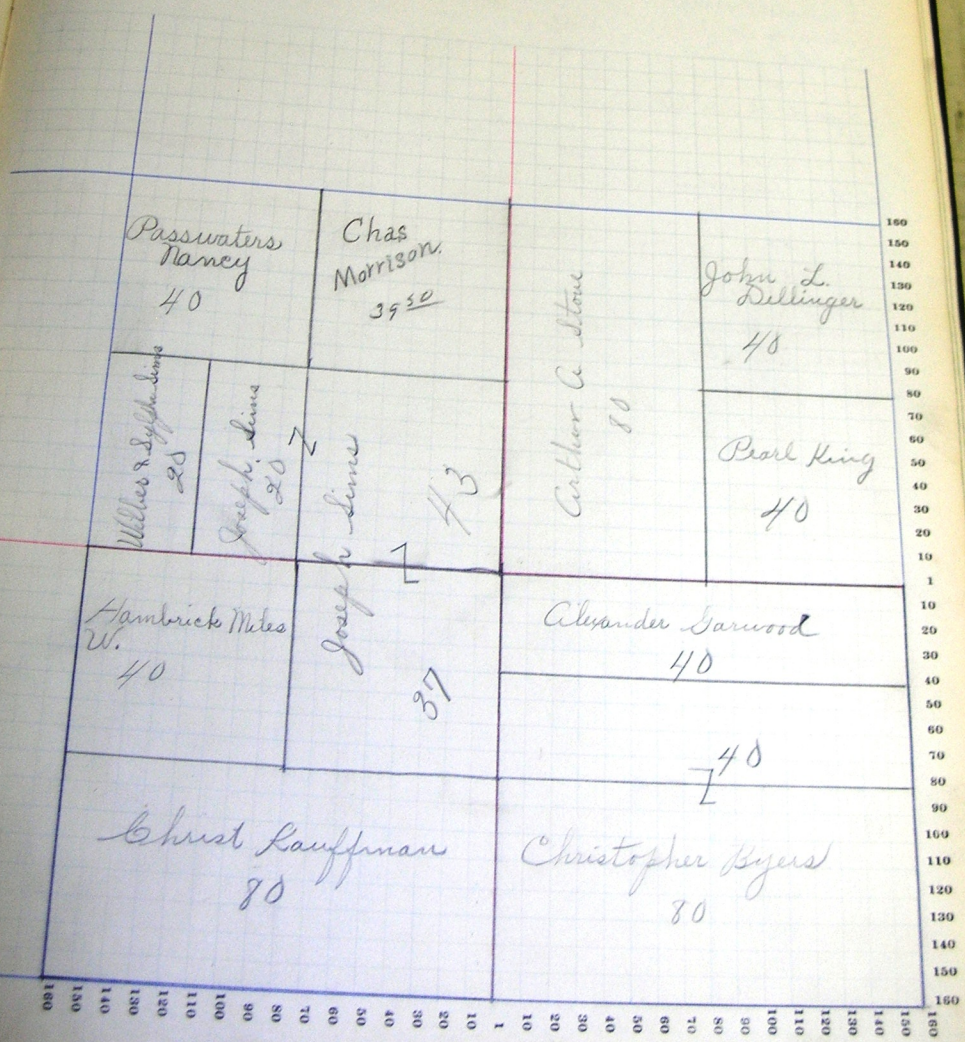
W. B. HUBBARD, BLUE CREEK TWP., INDIANA

NAMES OF OWNERS.	Number on Plat.	DESCRIPTION.	Section.	Township.	Range.	Acres.	Hundredths.	Value of Land.	Value of Improvements.	Value of Land and Improvements.
Morrison Chas.		pt e/2 nw	10	26	15	36	50	940		
		spt ne nw	10				3	85		
Byers Christopher		e/2 se	10				80	2280	350	
		e/2 w/2 se	10				40	1140		
Dellinger John L.		w/2 e/2 ne	10				40	1040	50	
Garnwood Alexander		w/2 w/2 se	10				40	1140	150	
Hambrecht Miles W.		nw	10				40	1070	450	
Kauffman Christ		pt sw	10				80	2280	250	
King Pearl		se ne	10				40	1080	680	
Passwaters Nancy		nw	10				40	1040	200	
Stone Arthur A.		ne	10				80	2280	250	
Simms Wilbur & Sylvia		w/2 sw nw	10				20	550	150	
Simms Joseph		pt ne nw	10				43	1225	350	
		ne sw	10				37	1050		
		1/2 sw nw	10				20	560		

SECTION No. 10

Congressional Township No. 26, R.

SCALE - Forty rods to an inch, or ten rods to a space, Congress Land, which is one mile square for a section.
Number of acres in this section, according to the United States Survey.



180
170
160
150
140
130
120
110
100
90
80
70
60
50
40
30
20
10
1
10
20
30
40
50
60
70
80
90
100
110
120
130
140
150
160