

COUNTY, INDIANA, 1907.

Assessor's Plat-Book for

Township, No.

See a. 10000. State Book No. 1000000000

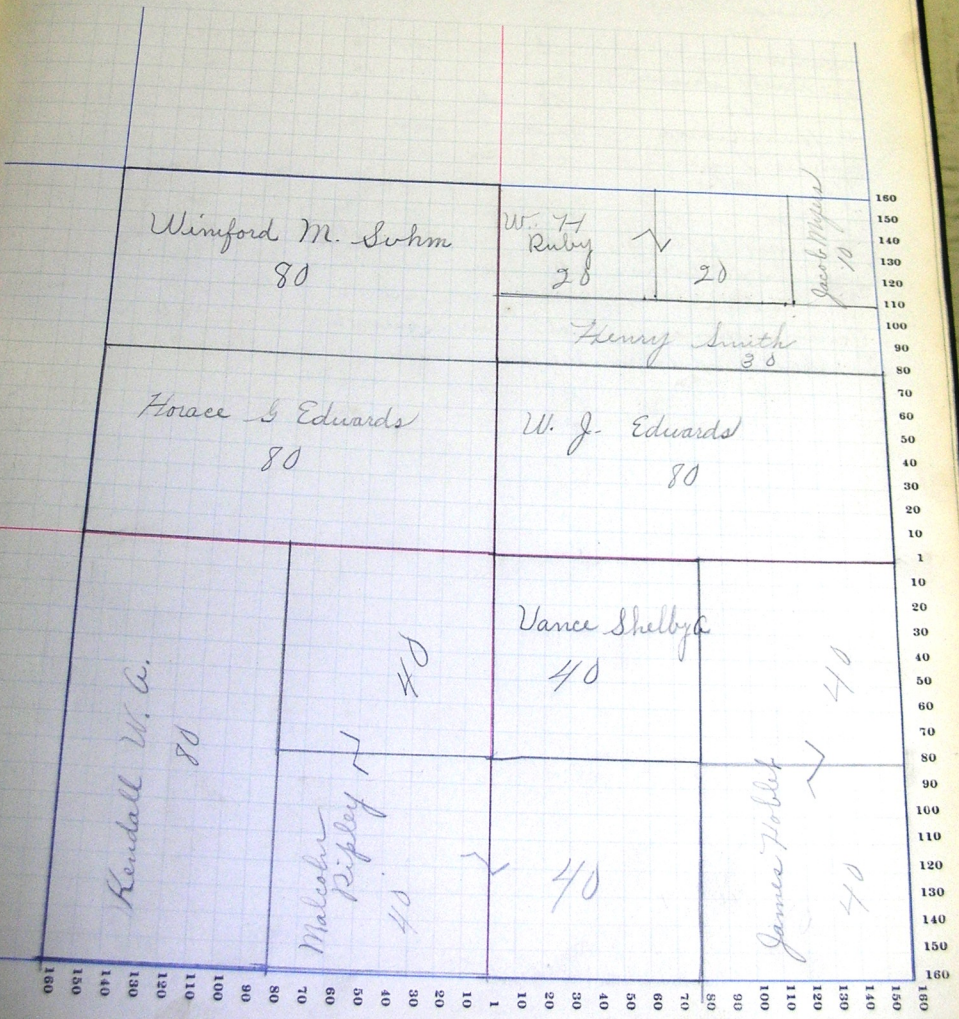
NAMES OF OWNERS.	Number of Plat.	DESCRIPTION.	Section.	Township.	Range.	Acres.	Hundredths.	Value of Land.	Value of Improvements.	Value of Land and Improvements.
Myers Jacob		ne cor ne	15	26	15	10		270		
Edwards Horace G.		s ₂ nw	15		15	10		2320	800	
Edwards W. J.		s ₂ ne	15		15	80		2240	200	
Hoblet James		s ₂ s ₂ se	15		15	40		1100	350	
oo		ne se	15		15	40		1100		
Kendall W. C.		w ₂ sw	15		15	80		2640	160	
Ruby W. H.		pt n ₂ ne	15		15	20		500		
oo		pt ne ne	15		15	20		540	200	
Ripley Malcolm		ept sw se	15		15	30		870	60	
oo		se sw	15		15	40		1160	400	
oo		sw sw	15		15	10		232		
oo		ne sw	15		15	40		1160	80	
Smith Henry		spt n ₂ ne	15		15	30		855	150	
Suhm Winford M.		n ₂ nw	15		15	80		2240	350	
Vance Shelby A.		nw se	15		15	40		1120	120	

SECTION No. 15

Congressional Township No. , R.

SCALE—Forty rods to an inch, or ten rods to a space, Congress Land, which is one mile square for a section.
Number of acres in this section, according to the United States Survey,

Value of
lands and
improvements.



160
150
140
130
120
110
100
90
80
70
60
50
40
30
20
10
1
10
20
30
40
50
60
70
80
90
100
110
120
130
140
150
160

Adams

COUNTY, INDIANA, 1907.

Assessor's Plat-Book for Blue Creek

Township, No. 24

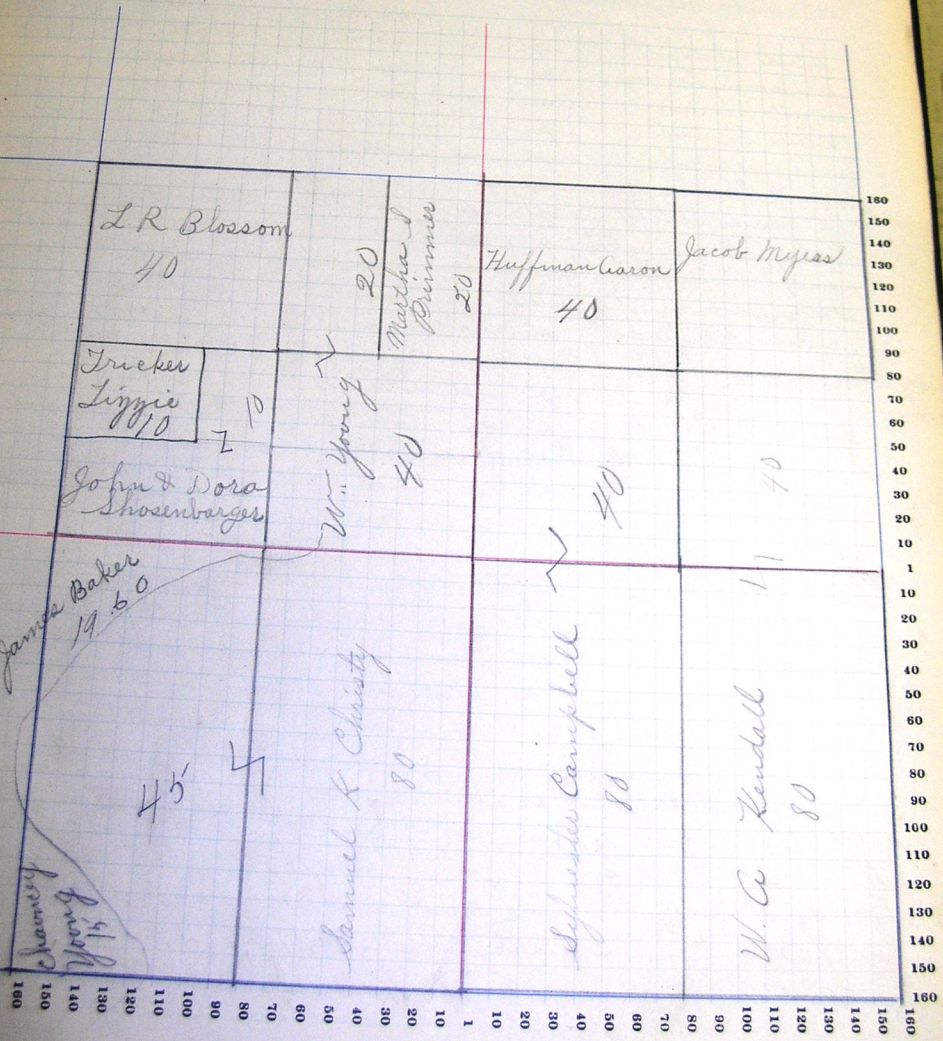
NAMES OF OWNERS.	Number of Plats.	DESCRIPTION.	Section.	Township.	Range.	Acres.	Hundredths.	Value of Land.	Value of Improvements.	Value of Lumber and Improvements.
Blosson L.R.		sw	nw	16	26	15	71	1005		
Myers Jacob		ne	ne	16			40	1080		
Kendall W.A.		es	se	16			80	2640	750	
oo		se	ne	16			40	1320	40	
Laker James		st	sw	16			19	60	405	150
oo		es	sw	16			80	2240	450	
oo		pt	sw	16			45	1260	150	
Huffman Aaron		nw	ne	16			40	860	50	
Tricker Lizzie		sw	sw	16			10	270	150	
Young W.H.		pt	ne	16			40	1040	250	
oo		sw	ne	16			20	260		
Premier Martha S.		es	ne	16			20	540	100	
oo		es	sw	16			20	540		
oo		sw	sw	16			10	270		
Young Chasney		pt	sw	16			15	420	300	
Campbell Sylvester		sw	se	16			80	2240	200	
oo		pt	se	16						
oo		pt	sw	16			40	1120		

SECTION No. 16

Congressional Township No. 26, R.

SCALE—Forty rods to an inch, or ten rods to a space, Congress Land, which is one mile square for a section. Number of acres in this section, according to the United States Survey.

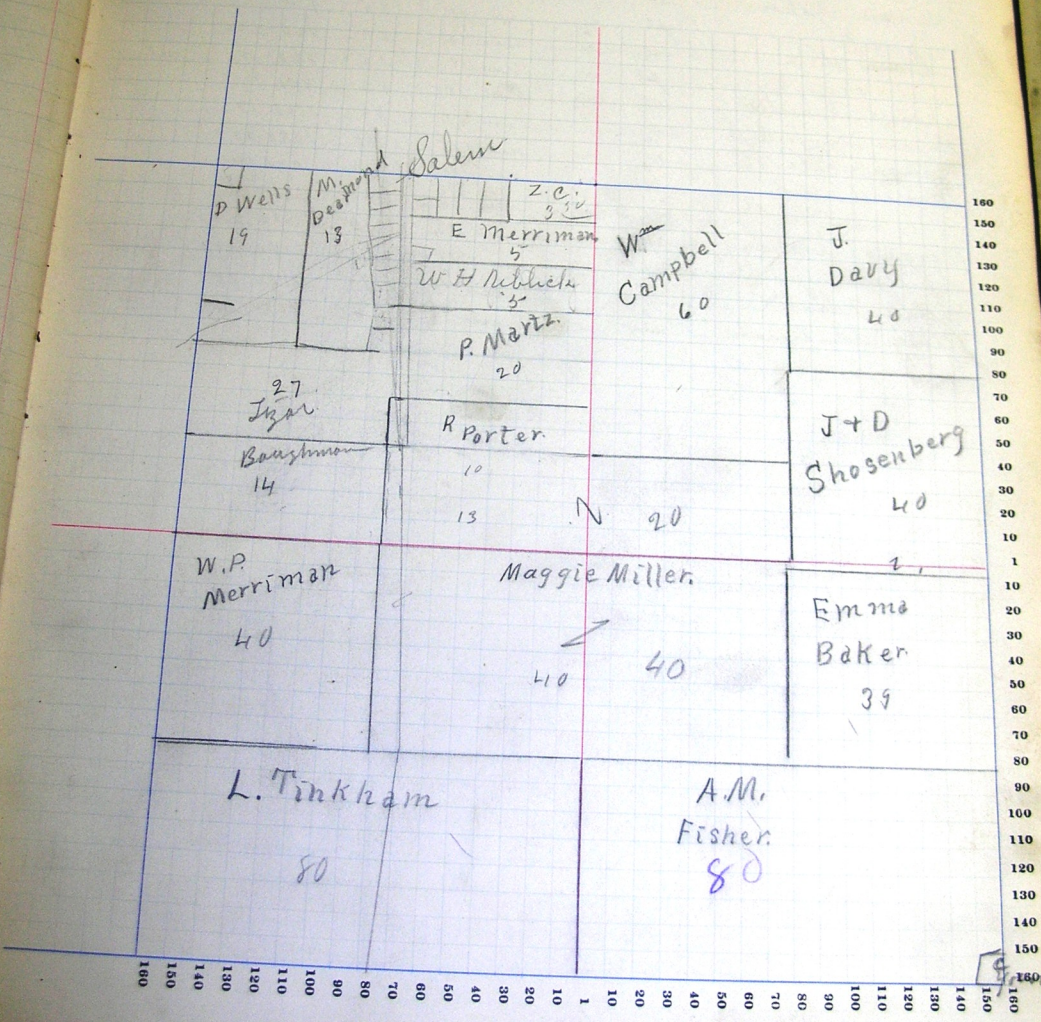
Value of Land and Improvements



NUMBERS OF PLATS FOR THIS SECTION	NAMES OF OWNERS.	Number of Tracts.	DESCRIPTION.	Section.	Township.	Range.	Acres.	Value of Land.	Value of Improvements.	Value of Land and Improvements.
	Baughman A. B.		pt sw nw	17	26	18	14	27	340	
	Davis Charles		se cor nw	17				25	20	150
	Shoenbarger John	Don	se	17			40	1050	500	
	oo		npt ne se	17			1	25		
	Steele Samuel		spt ne nw	17			1	22	30	75
	Tinkham Lorenzo		1/2 sw	17			80	2220	300	
	Vanitt Hiram		nw cor nw	17			1	30		
	Vorhes Russel		pt ne nw	17				25	15	40
	Wells David		pt nw nw	17			19	503	150	
	Young Charney		se cor se	17			1	50	85	200
	Baughman Rachel		pt sw nw	17			14	27	877	250
	Baker Emma	Del	pt ne se	17			39	1023	100	
	Campbell William		pt w 1/2 ne	17			60	1620	400	
	Davy Joshua		ne ne	17			40	1080	350	
	DeBerkmond Malinda		pt ne nw	17			13	324	150	
	Everett Frankkie		spt ne nw	17			63	15	70	
	oo		pt spt ne nw	17				25	10	
	Fisher Arthur M.		pt s 1/2 se	17			98	50	1996	
	Shannon Thomas C.		se of nw cor	17			1	60	40	50
	Lizar Catharine		spt nw	17			27	98	756	80
	oo		pt nw	17			1	27		
	Merriman Elisha		pt nw	17			5	135	100	
	Marty Philip		pt nw	17			10	270	500	
	oo		pt n 1/2 nw	17			10	270		
	Merriman W. P.		ept nw sw	17			15	405	200	
	oo		ept nw sw	17			25	695		
	Miller Maggie		ne sw	17			40	1080		
	oo		nw se	17			50			
	Mercer Elizabeth J.		pt nw nw	17			1	27	70	
	McCathany Joe.		pt ne nw	17			8	65	90	50
	Kibbie W. H.		pt nw	17			5	140	50	
	Porter Rebecca		1/2 sw ne	17			20	540	300	
	oo		se cor nw	17			7	189		
	oo		pt se nw	17			10	89	280	
	oo		pt se nw	17			13	98	360	

SCALE—Forty rods to an inch, or ten rods to a space, Congress Land, which is one mile square for a section.
Number of acres in this section, according to the United States Survey,

Value of
Land and
Improvements



COUNTY, INDIANA, 1907.

Assessor's Plat-Book for _____

Township, No. _____

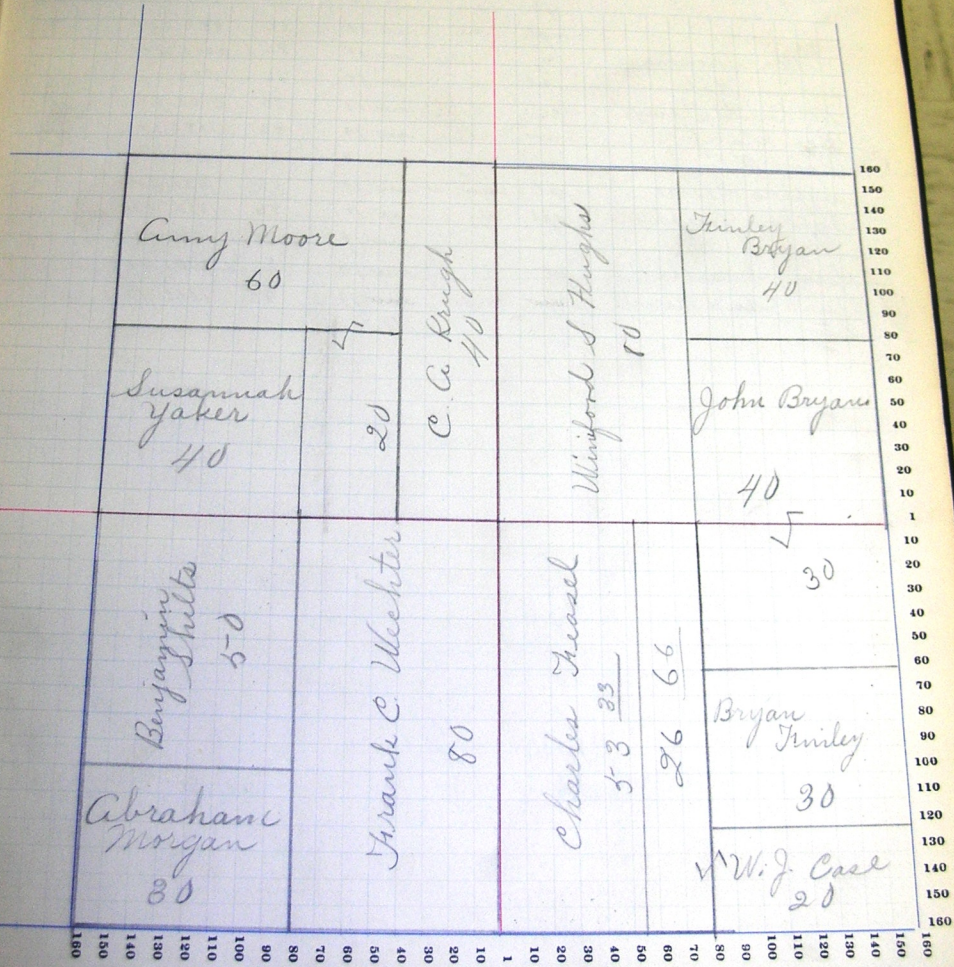
BY A. J. DODD, CLERK, BOOK # 29, DISTRICT # 10

NAMES OF OWNERS.	Number of Plat.	DESCRIPTION.	Section.	Township.	Range.	Acres.	Market Value.	Value of Improvements.	Value of Land and Improvements.
Bryan Finley		ne	15	26	15	40	1050	500	
do		pt $\frac{1}{2}$	se	18		30	810		
Bryan John		se	nd	18		40	1050	150	
do		pt $\frac{1}{2}$	se	18		30	810		
Case W. J.		$\frac{1}{2}$ se	se	18		20	560	500	
do		pt $\frac{1}{2}$	se	18		26	66	728	50
Treasel Charles		$\frac{1}{3}$ $\frac{1}{2}$	se	18		53	38	1441	150
Hughes Winiford S.		$\frac{1}{2}$	ne	18		50	2160	175	
Hughes C. A.		$\frac{1}{2}$ $\frac{1}{2}$	nw	18		40	1080	250	
Moore Amy		nw	nw	18		40	1040	450	
do		$\frac{1}{2}$ $\frac{1}{2}$	nw	18		40	1013		
Morgan Abraham		spt sw	sw	18		30	810	250	
Shultz Benjamin		npt $\frac{1}{2}$	sw	18		50	1350	450	
Wichter Frank C.		$\frac{1}{2}$	sw	18		80	2100	400	
Yaker Susannah		sw	nw	18		40	1080	150	

SECTION No. 18

Congressional Township No. , R.

SCALE—Forty rods to an inch, or ten rods to a space, Congress Land, which is one mile square for a section. Number of acres in this section, according to the United States Survey,



Adams

COUNTY, INDIANA, 1907.

Assessor's Plat-Book for

Blue Creek

Township, No. 26

PLAT BOOK #19, SECTION 19

NAMES OF OWNERS.	Number of Plat.	DESCRIPTION.	Section.	Township.	Range.	Acres.	Value of Land.	Value of Improvements.	Value of Land and Improvements.
Andrews Mercy		se	19	26	18	40	1100	300	
Boske John J		e side	19			48	1296	650	
Gage G. C.		sw	19			40	1100	400	
do		spt sw	19			24	648	150	
do		npt ne	19			26	552	300	
Hittler Solomon		$\frac{e}{2}$	19			80	2052	400	
Harman John		pt	19			56	1982		
McDaniel Perry		$\frac{e}{2}$	19			80	2150	500	
Roe Caleb		nw	19			40	1020	200	
Roe Nathan		$\frac{n}{2}$ $\frac{w}{2}$	19			30	795	100	
Syphers George		pt nw	19			10	275	200	
Syphers Joseph		npt $\frac{n}{2}$	19			56	1512	180	
do		ne	19			40	1065		
Young Samantha E.		pt	19			83 $\frac{1}{2}$	2441	700	
Walt John & Mariah		sw	19			40	1160	125	

SECTION No. 19

Congressional Township No. 26, R.

SCALE—Forty rods to an inch, or ten rods to a space, Congress Land, which is one mile square for a section. Number of acres in this section, according to the United States Survey.



160
150
140
130
120
110
100
90
80
70
60
50
40
30
20
10
1
10
20
30
40
50
60
70
80
90
100
110
120
130
140
150
160

Value of
Improvements

Value of
Lands and
Improvements

Adams

COUNTY, INDIANA, 1907.

Assessor's Plat-Book for Blue Creek

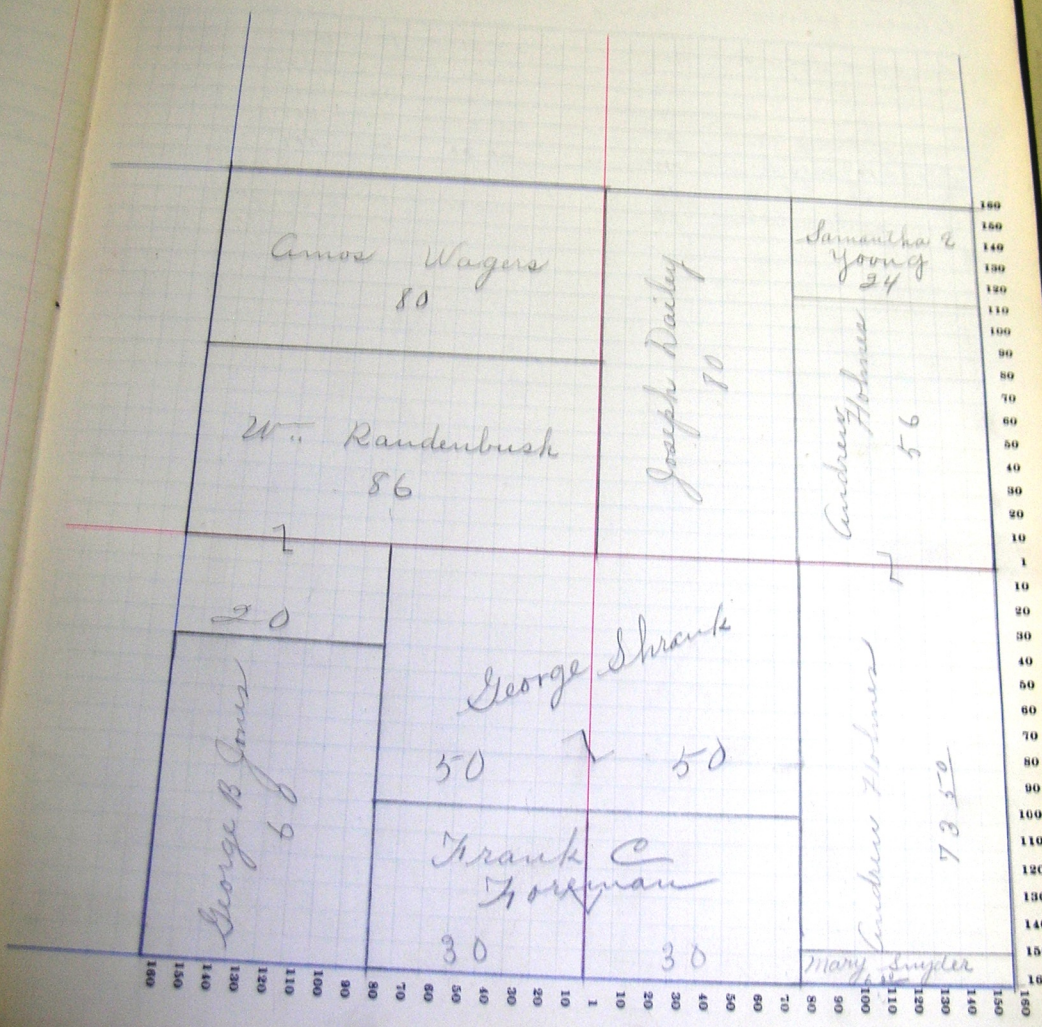
Township, No. 6

NAMES OF OWNERS.	Number of Plat.	DESCRIPTION.	Section.	Township.	Range.	Acres.	Hundredths.	Value of Land.	Value of Improvements.	Value of Land and Improvements.
Gannatha Young E.		npt $\frac{1}{2}$ ne	20	26 1/2	24	378	100			
Railey Joseph		w $\frac{1}{2}$ ne	20			80	2000	100		
Foreman Frank		spt $\frac{1}{2}$ sw	20			30	800	50		
oo		spt w $\frac{1}{2}$ se	20			30	810	50		
Holmes Andrew		pt $\frac{1}{2}$ se	20			73	502007	100		
oo		st $\frac{1}{2}$ ne	20			50	1468	400		
Jones George B		spt w $\frac{1}{2}$ sw	20			60	1620	300		
Raudenbush W.		s $\frac{1}{2}$ nw	20			86	2360	600		
oo		w $\frac{1}{2}$ ne	20			20	504	70		
Schrank George		npt $\frac{1}{2}$ sw	20			27	50760	70		
oo		npt w $\frac{1}{2}$ se	20			27	50760	70		
oo		midpt $\frac{1}{2}$ sw	20			22	50608	700		
oo		w $\frac{1}{2}$ se	20			22	50608	70		
Snyder Mathias		pt $\frac{1}{2}$ se	20			3	50108	80		
Snyder Mary		pt $\frac{1}{2}$ se	20			3	95	50		
Wagers Amos		w $\frac{1}{2}$ nw	20			80	2045	400		

SECTION No. 20

Congressional Township No. 26, R.

SCALE - Forty rods to an inch, or ten rods to a space, Congress Land, which is one mile square for a section.
Number of acres in this section, according to the United States Survey.



Adams

COUNTY, INDIANA, 1907.

Assessor's Plat-Book for

Blue Creek

Township, No. 26

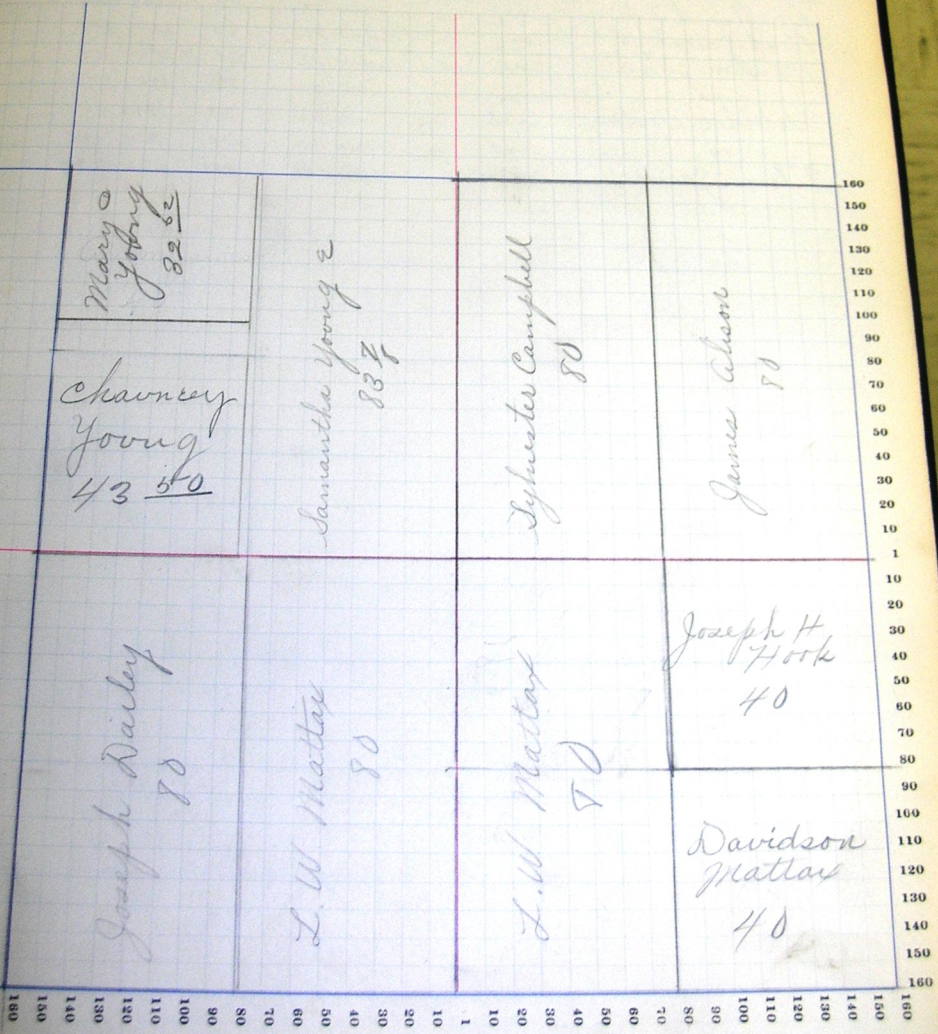
W.P.A. 207-608, 6431, 6087, 872, 6218, 6130, 6131

NAMES OF OWNERS.	Number on Plat.	DESCRIPTION.	Section.	Township.	Range.	Acres.	Homestead.	Value of Land.	Value of Improvements.	Value of Lumber and Improvements.
Young Charming		pt nw	21	26	15	48		50	1004	80
Daily Joseph		w ₂ sw	21				80	2160	450	
Alison James		1/2 ne	21				80	2280	450	
		sw	21				40	1245	88	
Campbell Sylvester		w ₂ ne	31				80	2040	500	
Mattay W.L.		1/2 se	21				80	2092	430	
		1/2 sw	21				80	2200		
Young Mary C.		pt nw	21				32	62	405	
Flood Joseph		1/2 ne	21				40	1150		
Mattay Davidson		se	21				40	1120	700	
Young Samantha L.		pt nw	21				83	1/8	2171	700

SECTION No. 21

Congressional Township No. 26, R.

SCALE—Forty rods to an inch, or ten rods to a space, Congress Land, which is one mile square for a section.
Number of acres in this section, according to the United States Survey,



Value of Land and Improvements

Adams COUNTY, INDIANA, 1907.

Assessor's Plat-Book for Blue Creek Township, No. 26

PLAT & DISTRICT PLAT BOOK, REG. DISTRICTS

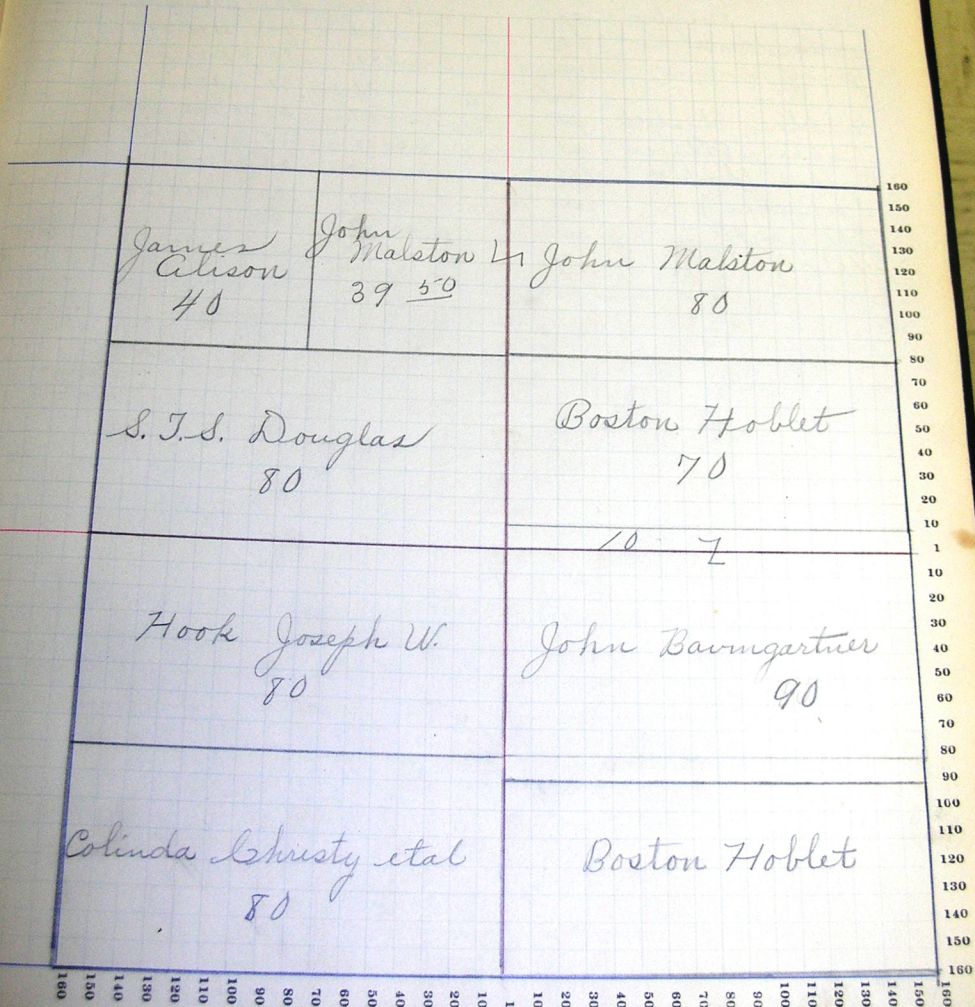
NAMES OF OWNERS.	Number on Plat.	DESCRIPTION.	Section.	Township.	Range.	Acres.	Hundredths.	Value of Lands.	Value of Improvements.	Value of Lands and Improvements.
Baumgartner John		spt $\frac{1}{2}$	ne	22	26/3	10		295		
vs		npt	se	22		90		2565	450	
Christy Colinda et al		$\frac{1}{2}$	sw	22		80		2240	700	
Douglas A. J. S.		$\frac{1}{2}$	nw	22		80		2305	500	
Hook Joseph W		$\frac{1}{2}$	sw	22		80		2280	400	
Malston John		ne	nw	22		39	50	1160	60	
vs		$\frac{1}{2}$	ne	22		80		2320	600	
Hobblet Boston		spt $\frac{1}{2}$	ne	22		70		1960	350	
vs		npt $\frac{1}{2}$	ne	22		70		1960	450	
Wilson James		nw	nw	22		40		1305	90	

SECTION No. 22

Congressional Township No. 26, R.

SCALE—Forty rods to an inch, or ten rods to a space, Congress Land, which is one mile square for a section.
Number of acres in this section, according to the United States Survey,

Value of
Land and
Improvements



160
150
140
130
120
110
100
90
80
70
60
50
40
30
20
10
1
10
20
30
40
50
60
70
80
90
100
110
120
130
140
150
160