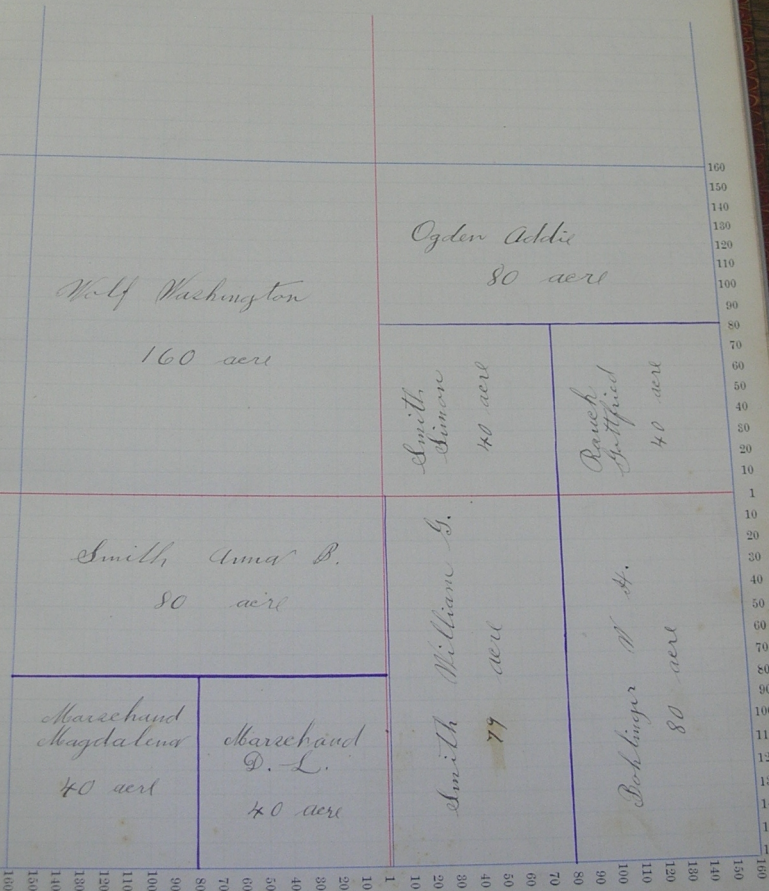
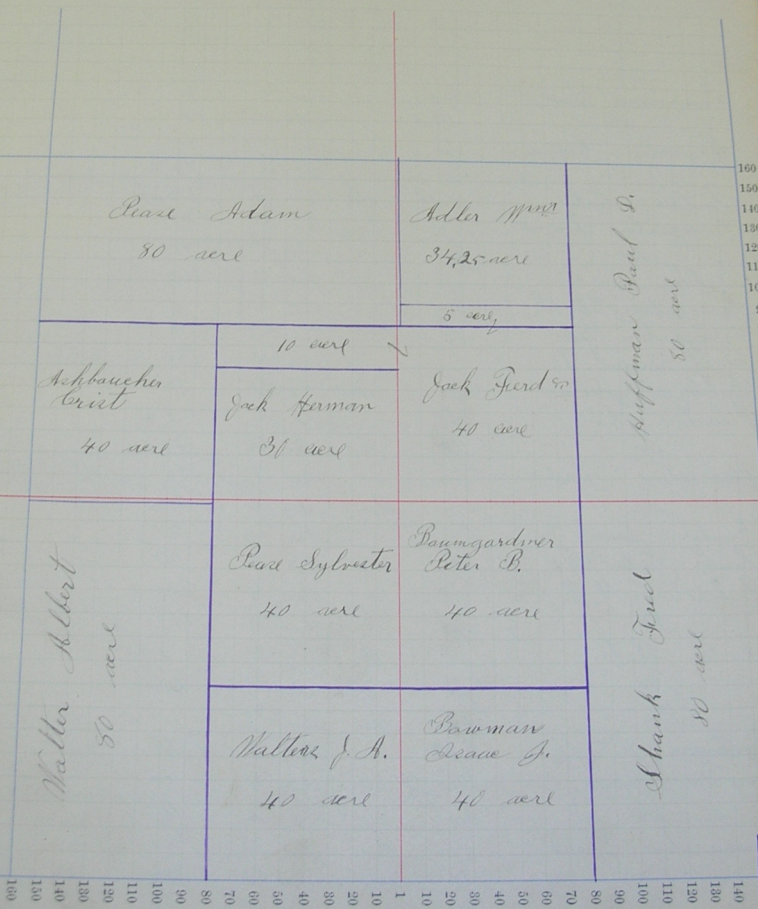


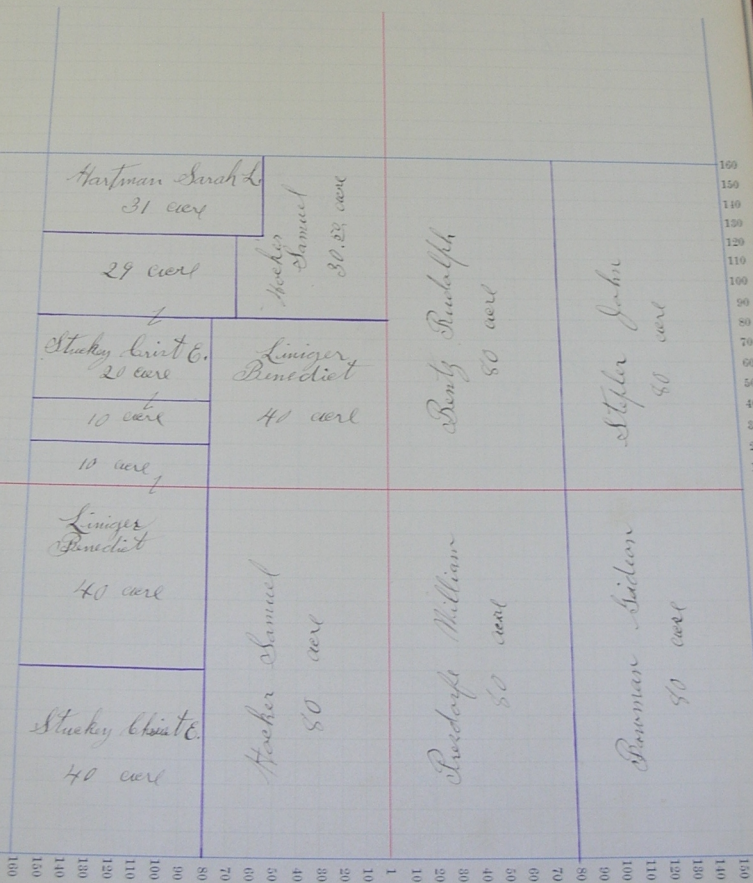
Scale—Forty rods to an inch, or ten rods to a space, Congress Land, which is one mile square for a section.  
Number of acres in this section, according to the United States Survey, \_\_\_\_\_



Scale—Forty rods to an inch, or ten rods to a space, Congress Land, which is one mile square for a section.  
 Number of acres in this section, according to the United States Survey, \_\_\_\_\_



Scale—Forty rods to an inch, or ten rods to a space, Congress Land, which is one mile square for a section.  
 Number of acres in this section, according to the United States Survey, \_\_\_\_\_

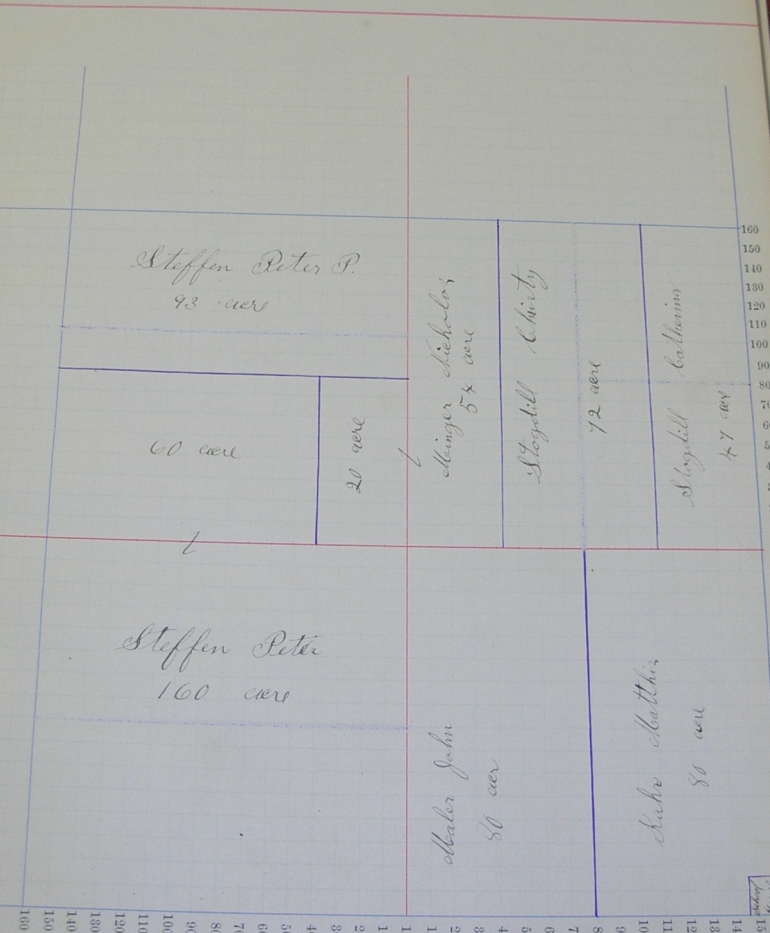




Section No. 4

Congressional Township No. 26, R. 13

Scale—Forty rods to an inch, or ten rods to a space, Congress Land, which is one mile square for a section.  
Number of acres in this section, according to the United States Survey, \_\_\_\_\_



Steffen Peter P.  
93 acres

60 acres

20 acres

Minger Nicholas  
54 acres

Stogdill Charity  
72 acres

Stogdill Catharine  
47 acres

Steffen Peter  
100 acres

Abner John  
80 acres

Luke Matthis  
80 acres

160  
150  
140  
130  
120  
110  
100  
90  
80  
70  
60  
50  
40  
30  
20  
10  
1

Acres

160  
150  
140  
130  
120  
110  
100  
90  
80  
70  
60  
50  
40  
30  
20  
10  
1