

COUNTY, INDIANA, 1907.

Assessor's Plat-Book for \_\_\_\_\_

Township, No. \_\_\_\_\_

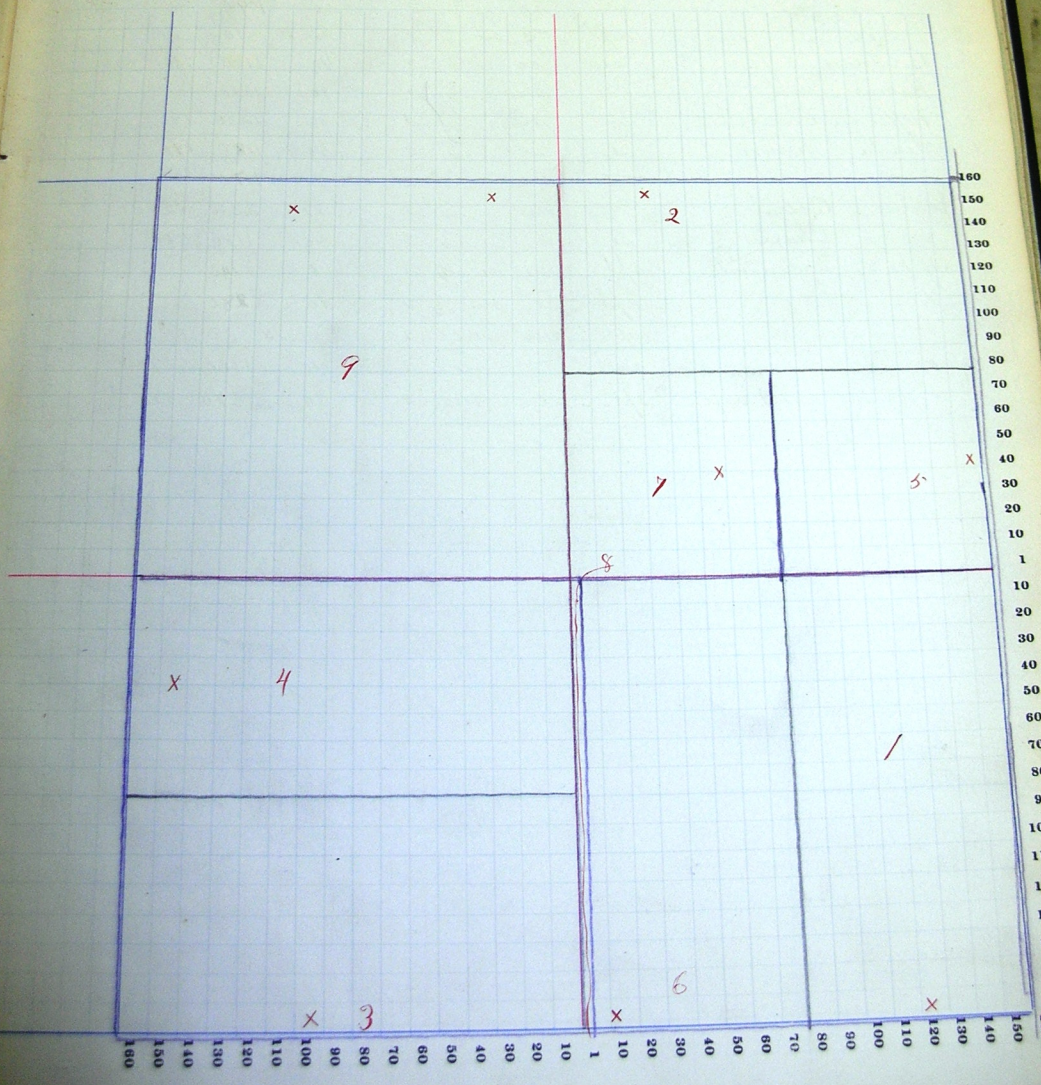
	NAMES OF OWNERS.	Number on Plat.	DESCRIPTION.			Section.	Township.	Range.	Acres.	Handreths.	Value of Lands.	Value of Improvements.	Value of Lands and Improvements.
1	Bollinger Wm H.		1/2	SE	1/4	1	26	13	80	2260	040		
2	Engle John		npt	NE	1/4	1			100	2930	600		
3	Oberbach Christian		3/2	SW	1/4	1			80	2340	210		
4	Smith John		n/2	SW	1/4	1			80	2260	680		
5	Smith Simon		SE	NE	1/4	1			400	1180	130		
6	oo Wm G.		W/2	SE	1/4	1			79	2330	570		
7	Rich Joseph		SW	NE	1/4	1			40.	1080	140		
8	oo oo		Wpt	W/2 SE	1/4	1			1		30		
9	Stolfe Washington		W/2	1/4	1/4	1			168	4700	610		

SECTION No. /

Congressional Township No. 26 , R. 13

SCALE—Forty rods to an inch, or ten rods to a space, Congress Land, which is one mile square for a section.  
Number of acres in this section, according to the United States Survey, 668

x Dwelling



COUNTY, INDIANA, 1907.

Assessor's Plat-Book for

Township, No.

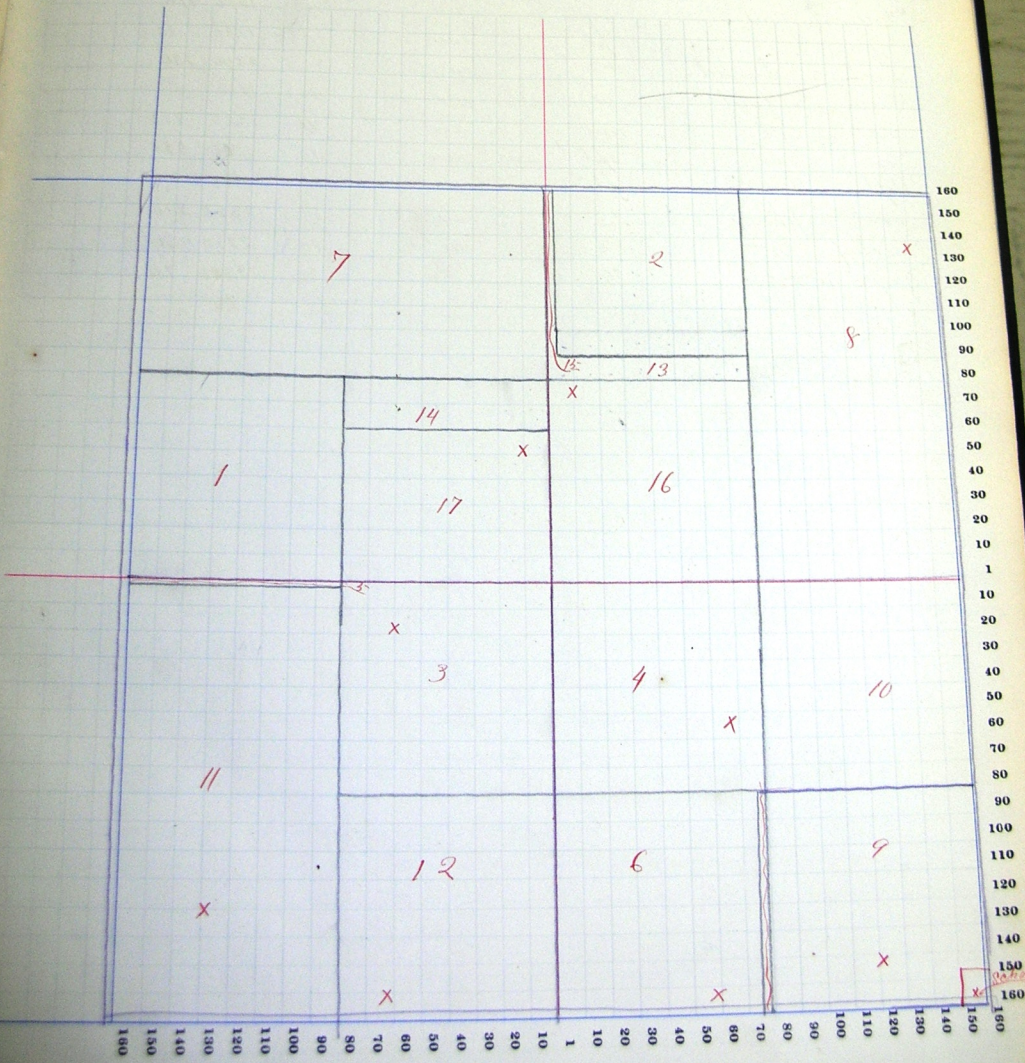
NAMES OF OWNERS.			DESCRIPTION.	Section.	Township.	Range.	Acres.	Hundredths.	Value of Lands.	Value of Improvements.	Value of Lands and Improvements.
Number on Plat.											
1	Ashbacher	Christ	sw nw $\frac{1}{4}$	2	26	13	40		1150		
2	Adler	Ar	wft nw ne $\frac{1}{4}$	2			34	25	1000		
3	Baumgartner	Peter B.	ne sw $\frac{1}{4}$	2			40		1080	410	
4	oo	oo oo	nw se $\frac{1}{4}$	2			40		1090	80	
5	oo	oo oo	wft $\frac{1}{2}$ sw $\frac{1}{4}$	2				50	10		
6	Bowman	J. J.	sw se $\frac{1}{4}$	2			40		1150	730	
7	Hulmer	Fred	$\frac{1}{2}$ nw $\frac{1}{4}$	2			80		2260		
8	Hoffman	Elizabeth	$\frac{1}{2}$ ne $\frac{1}{4}$	2			80		2220	180	
9	Smith	Simon	se se $\frac{1}{4}$	2			40		1180	690	
10	oo	oo	ne se $\frac{1}{4}$	2			40		1170		
11	Walter	Albert	w $\frac{1}{2}$ sw $\frac{1}{4}$	2			72		2310	620	
12	oo	Charles	se sw $\frac{1}{4}$	2			40		1180	560	
13	Opake	Ferdinand	sft nw ne $\frac{1}{4}$	2			5		140		
14	oo	oo	wft se nw $\frac{1}{4}$	2			10		280		
15	oo	oo	wft nw ne	2				75	20		
16	oo	oo	sw ne	2			40		1160	370	
17	oo	oo & wife	sft se nw	2			30		870	320	

SECTION No. 2

Congressional Township No. 26, R. 13

SCALE—Forty rods to an inch, or ten rods to a space, Congress Land, which is one mile square for a section.  
Number of acres in this section, according to the United States Survey, 649.55

x Dwelling



COUNTY, INDIANA, 1907.

Assessor's Plat-Book for

Township, No.

W. A. TAYLOR, PLAT BOOK #72, INDIANAPOLIS

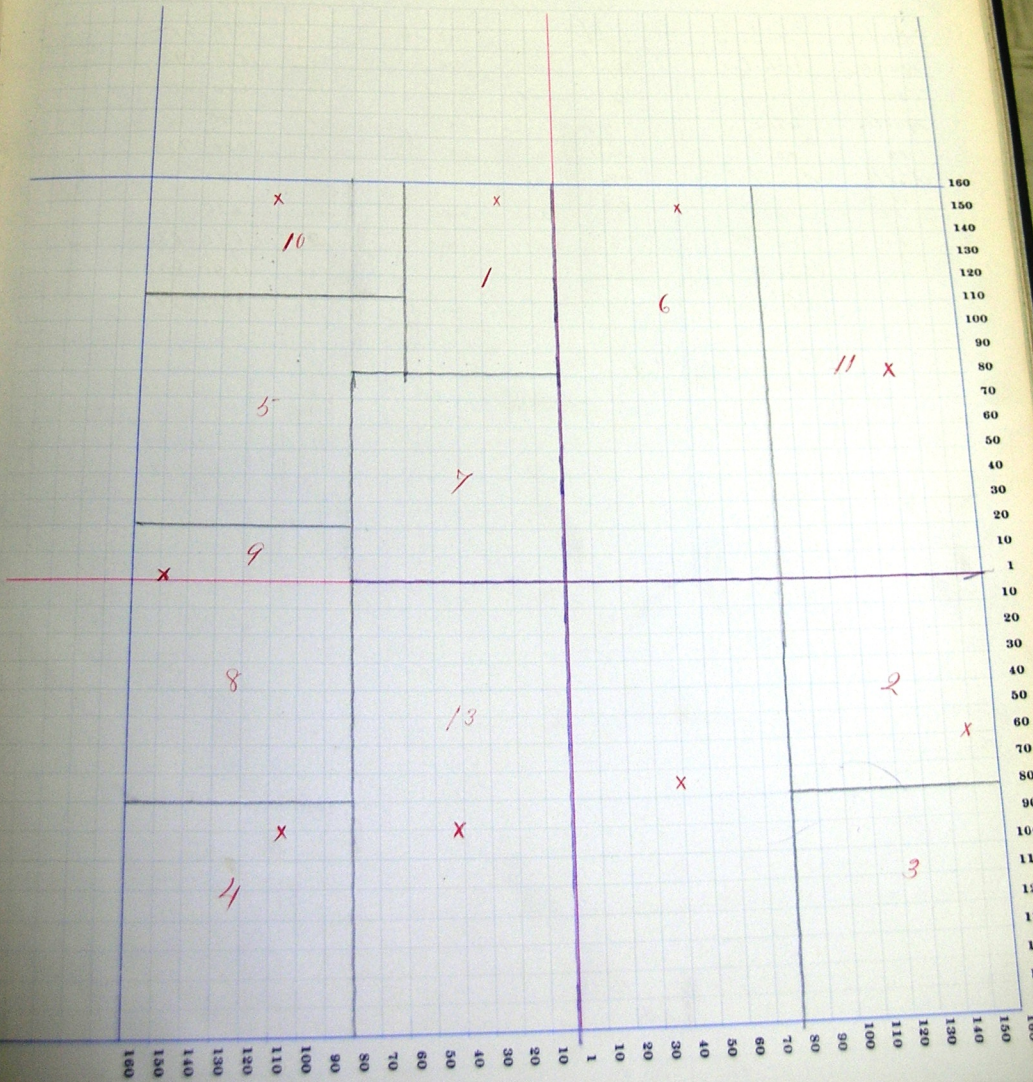
	NAMES OF OWNERS.	Number on Plat.	DESCRIPTION.	Section.	Township.	Range.	Acres.		Value of Lands.	Value of Improvements.	Value of Lands and Improvements.
1	Beatz Edward		ept $\frac{1}{2}$ nw	3	26	13	30	50	900	310	
2	Bowman Aline		ne se	3			40		1140	230	
3	oo I. J.		se se	2			39	$\frac{7}{8}$	1150		
4	Silliom Carl		sw sw	3			40		1200	910	
5	oo oo		pt nw	3			57	30	1820	10	
6	Lochner Samuel		$\frac{1}{2}$ ne	3			80		2340	730	
7	Rauch Gottfried		se sw	3			40		1160		
8	oo oo		nw sw	3			40		1220	450	
9	oo oo		spt sw nw	3			10		300	580	
10	Stepher Wm. P.		pt nw nw	3			31		860	210	
11	oo John.		$\frac{1}{2}$ ne	3			80		2380	830	
12	Presdorf Wm.		$\frac{1}{2}$ se	3			80		2380	430	
13	Gager Wm.		$\frac{1}{2}$ sw	3			80		2380	730	

SECTION No. 3

Congressional Township No. 26, R. 13

SCALE—Forty rods to an inch, or ten rods to a space, Congress Land, which is one mile square for a section.  
 Number of acres in this section, according to the United States Survey, 649.75

x Dwelling



# COUNTY, INDIANA, 1907.

Assessor's Plat-Book for \_\_\_\_\_

Township, No. \_\_\_\_\_

REV. A. TURNER, CLERK, BOX 879, INDIANAPOLIS

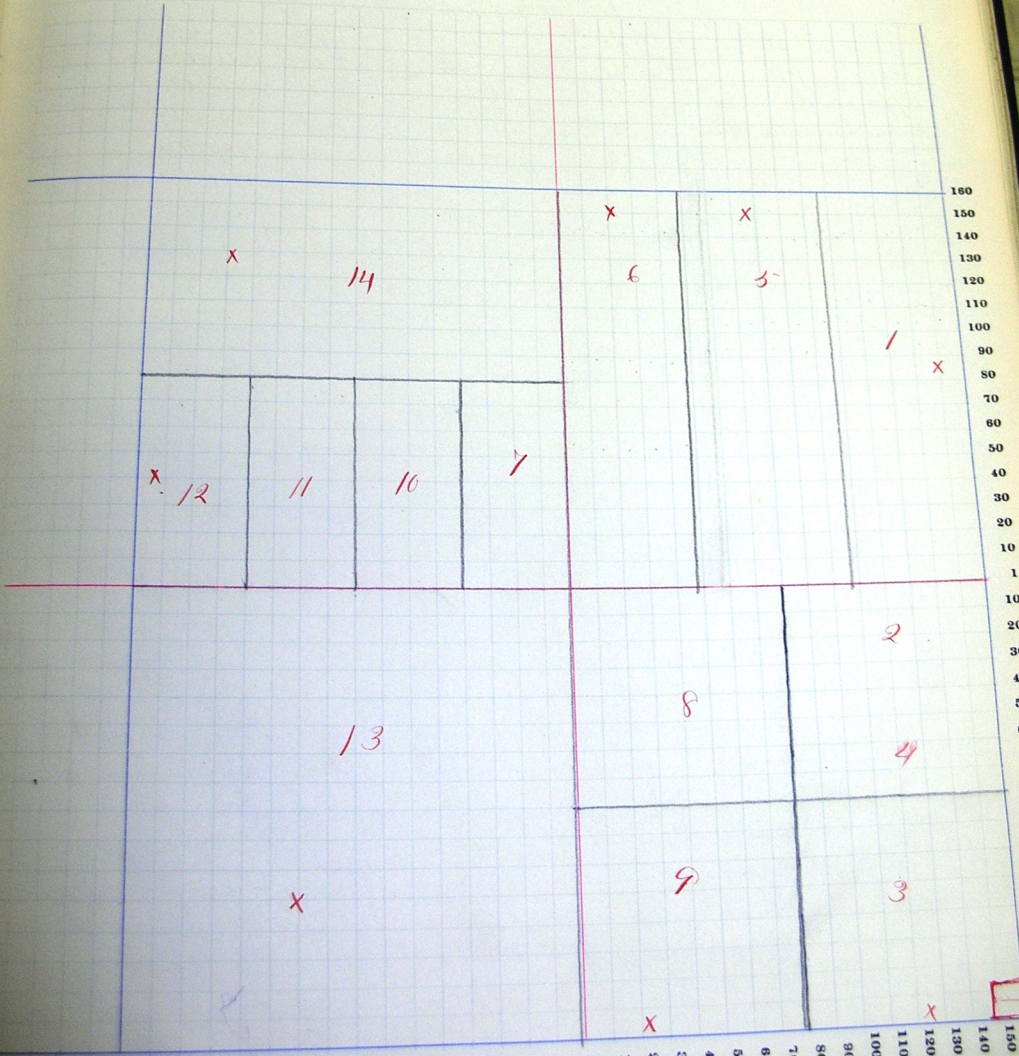
NAMES OF OWNERS.		Number on Plat.	DESCRIPTION.	Section.	Township.	Range.	Acres.	Hundredths.	Value of Lands.	Value of Improvements.	Value of Lands and Improvements.
1	Keahr Samuel		1/4	ne	4	26 18	62		1730	500	
2	oo John		1/2	se	4		20		610		
3	oo oo		se	se	4		40		1200	1220	
4	oo oo		1/2	ne	4		20		610		
5	Gerber Gideon		1/4	ne	4		60 <sup>2</sup> / <sub>3</sub>		1780	540	
6	Minger Nicholas		1/4	ne			54		1630	890	
7	oo oo		1/2	se	nw		20		620		
8	Maller John		nw	se			40		1240		
9	oo oo		sw	se			40		1220	770	
10	Steffen Enoch		1/2	se	nw		20		620		
11	oo oo		1/2	sw	nw		20		620		
12	oo oo		1/2	sw	nw		20		620	630	
13	oo Peter		sw				160		5040	820	
14	oo Peter S.		1/2	nw			93 13		2900	760	

SECTION No. 4

Congressional Township No. 26 , R. 13

SCALE—Forty rods to an inch, or ten rods to a space, Congress Land, which is one mile square for a section.  
 Number of acres in this section, according to the United States Survey, 669.53

*x Dwelling*





# COUNTY, INDIANA, 1907.

Assessor's Plat-Book for \_\_\_\_\_

Township, No. \_\_\_\_\_

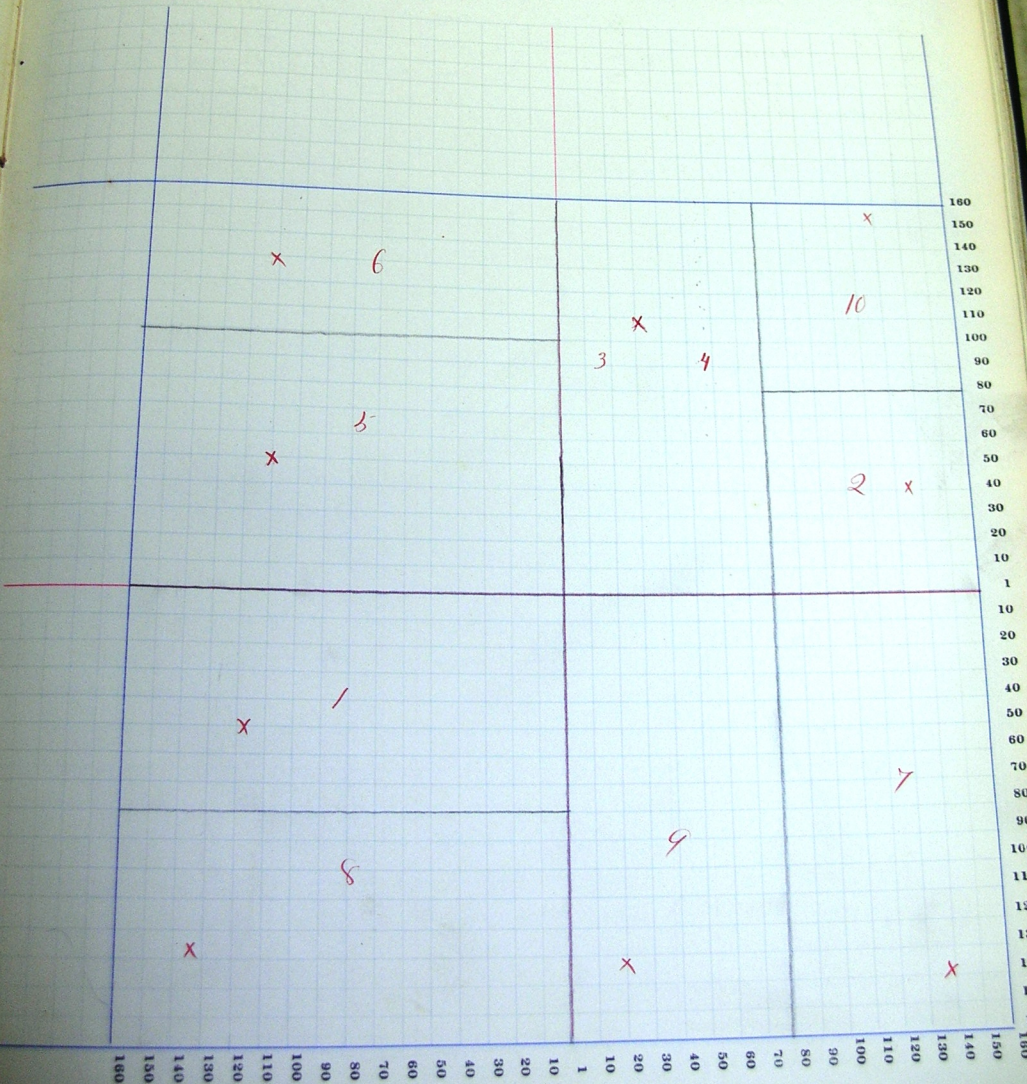
	NAMES OF OWNERS.	Number on Plat.	DESCRIPTION.	Section.	Township.	Range.	Acres.	Hundredths.	Value of Lands.	Value of Improvements.	Value of Lands and Improvements.
1	Biberstine Fred. C.		n $\frac{1}{2}$	sw	9	26 13	80		2380	570	
2	Geisel Paul		se	ne	9		40		1140	90	
3	Gerber John		w $\frac{1}{2}$	ne	9		30		930		
4	oo oo		ft	ne	9		50		1530	150	
5	oo oo		ft	sw	9		100		3070	730	
6	oo Jeff		ft	nw	9		60		1870	280	
7	Kipfer Joel J.		s $\frac{1}{2}$	se	9		80		2340	620	
8	Kunnschwander Dan		s $\frac{1}{2}$	sw	9		80		2340	500	
9	oo oo		w $\frac{1}{2}$	se	9		80		2380	480	
10	Tomer John		ne	ne	9		40		1200	470	

SECTION No. 9

Congressional Township No. 26, R. 13

SCALE—Forty rods to an inch, or ten rods to a space, Congress Land, which is one mile square for a section.  
Number of acres in this section, according to the United States Survey, 640.

x dwelling



COUNTY, INDIANA, 1907.

Assessor's Plat-Book for

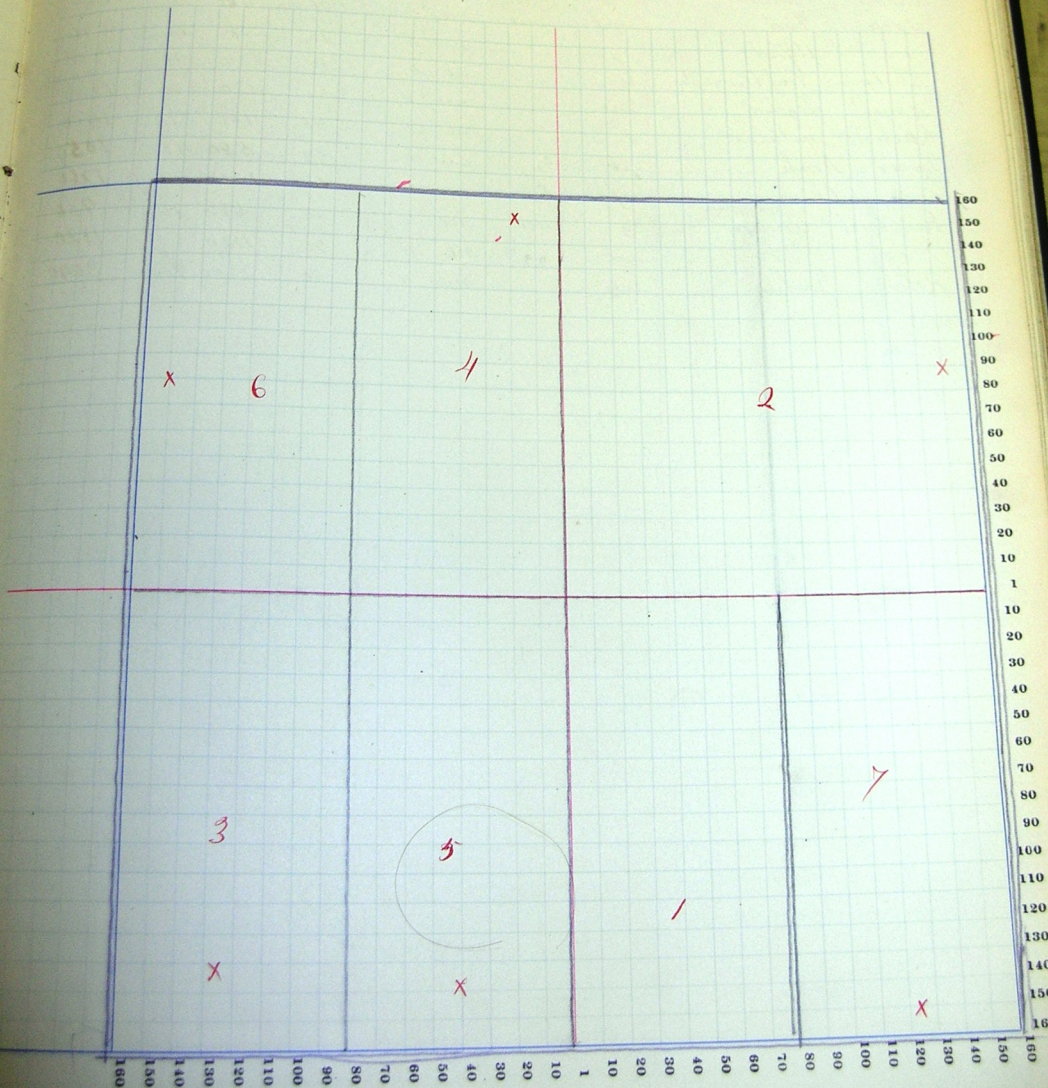
Township, No.

	NAMES OF OWNERS.	Number on Plat.	DESCRIPTION.	Section.	Township.	Range.	Acres.	Hundredths.	Value of Lands.	Value of Improvements.	Value of Lands and Improvements.
1	Ashbacher Christ		w/2	se	10	26 13	80		2340	10	
2	Hirely John		ne		10		150		4420	980	
3	Levy David		w/2	sw	10		80		2340	700	
4	Mertz Andrew		e/2	nw	10		80		2380	380	
5	Reinhart Uleric		e/2	sw	10		80		2340	770	
6	Pommer Jacob		w/2	nw	10		80		2340	420	
7	Ortizeman Mathias		e/2	se	10		80		2340	680	

SECTION No. 10

Congressional Township No. 26, R. 13

SCALE—Forty rods to an inch, or ten rods to a space, Congress Land, which is one mile square for a section.  
Number of acres in this section, according to the United States Survey, 630.



# COUNTY, INDIANA, 1907.

Assessor's Plat-Book for \_\_\_\_\_

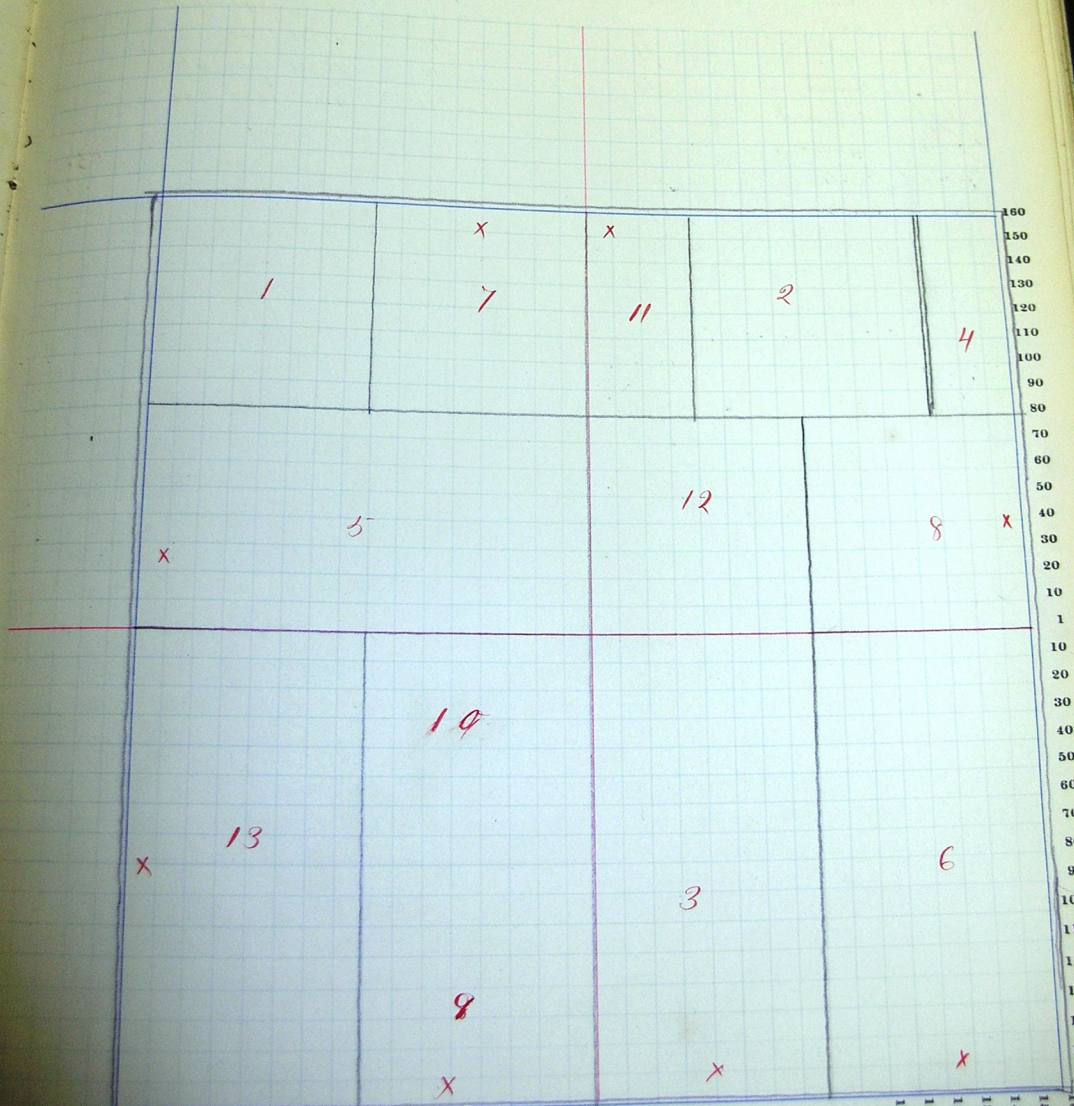
Township, No. \_\_\_\_\_

NAMES OF OWNERS.		Number on Plat.	DESCRIPTION.	Section.	Township.	Range.	Acres.	Halfwidths.	Value of Lands.	Value of Improvements.	Value of Lands and Improvements.
1.	Bowman J. J		nw	nw	11	26	13	40	1140		1140
2	do do		nd/pt n/2	ne	11			44	1300		1300
3	Erbart Julius		w/2	se	11			80	2380	430	2810
4	Isch Fred		e/pt ne	ne	11			16 50	480		460
5	do Alfred		s/2	nw	11			80	2380	690	3070
6	Klickman Fred & Augusta		e/2	se	11			80	2340	310	2850
7	Meyer Lydia		ne	nw	11			40	1180	560	1740
8	Koehler Mathias		se	ne	11			40	1160	290	1450
9	Tyoser Noah		pt e/2	sw	11			20	580	470	1050
10	do Elias		n/pt e/2	nw	11			60	1760		1760
11	Reinhart Andrew		w/2 nw	ne	11			20	580	350	930
12	do do		sw ne	ne	11			40	1120		1120
13	Rohr Joshua		w/2	nw	11			80	2340	700	3040

SECTION No. 11

Congressional Township No. 26, R. 13

SCALE—Forty rods to an inch, or ten rods to a space, Congress Land, which is one mile square for a section.  
Number of acres in this section, according to the United States Survey, 640.51



COUNTY, INDIANA, 1907.

Assessor's Plat-Book for \_\_\_\_\_

Township, No. \_\_\_\_\_

W. B. THURMAN, BLANK BOOK MAN, INDIANAPOLIS

NAMES OF OWNERS.	Number on Plat.	DESCRIPTION.	Section.	Township.	Range.	Acres.	Hundredths.	Value of Lands.	Value of Improvements.	Value of Lands and Improvements.
1 The Decatur Egg Case Co		2c	sw	12	26 13	40		1140		
2 Isch Jacob.		E $\frac{1}{2}$		12		324		9170		
3 oo oo		S $\frac{1}{2}$	nw	12		80		2300		
4 oo oo		N $\frac{1}{2}$	sw	12		80		2340	1630	
5 oo oo		pt	N $\frac{1}{2}$	nw	12	49 33		1340		
6 oo Ernest		1/4 pt	N $\frac{1}{2}$	nw	12	26 66		660	580	
7 Klopfenstein Jacob. P.		sw	sw	12		40		1080	280	

SECTION No. 12

Congressional Township No. 26, R. 13

SCALE—Forty rods to an inch, or ten rods to a space, Congress Land, which is one mile square for a section.  
Number of acres in this section, according to the United States Survey, 640.

Value of  
lands and  
improvements

