

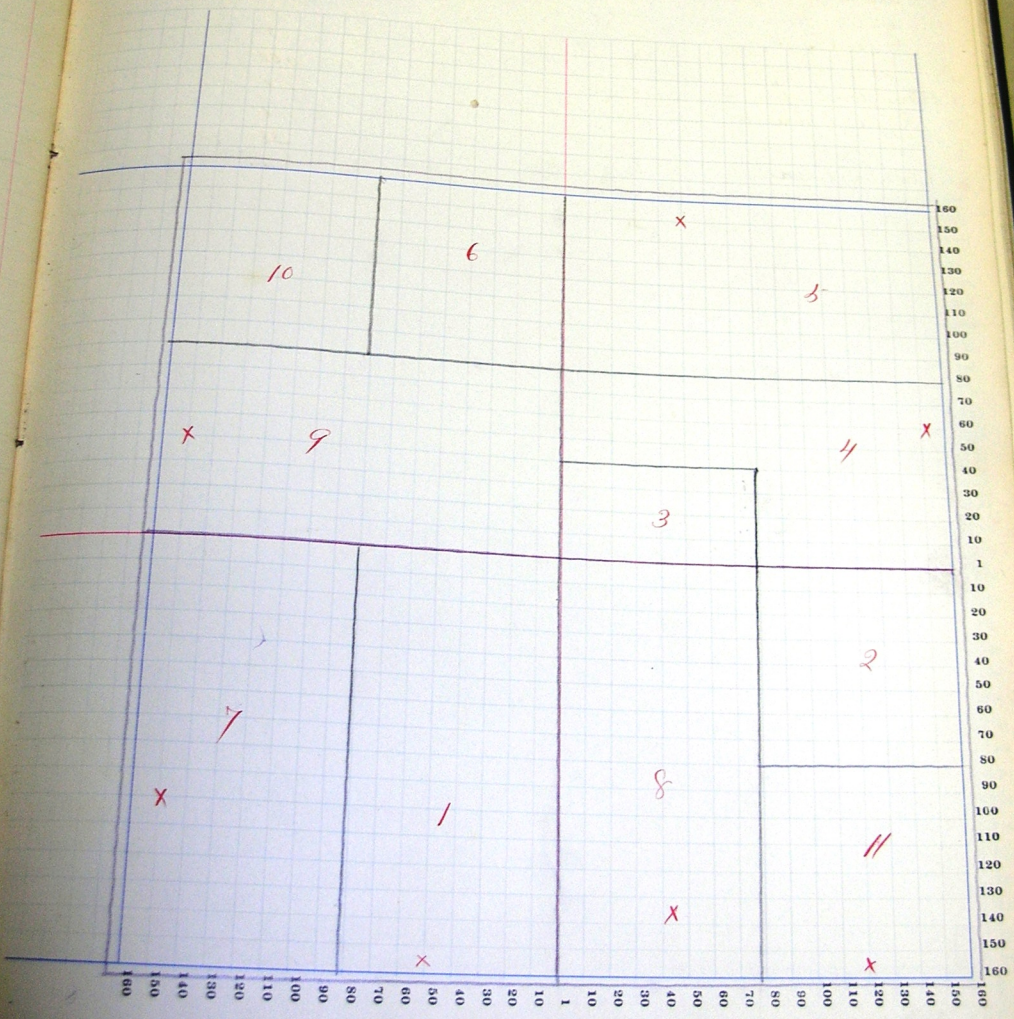
Assessor's Plat-Book for _____

Number on Plat.	NAMES OF OWNERS.	DESCRIPTION.	Location			Acres.	Value of Lands.	Value of Improvements.	Value of Lands and Improvements.
			Section.	Township.	Range.				
1	Amstutz John A.	$\frac{1}{2}$	sw	13	26	13	80	2380	740
2	Puchs John	ne	se	13			40	1180	
3	do do	ft $\frac{1}{2}$	ne	13			20	590	
4	do do	ft $\frac{3}{2}$	ne	13			60	1780	330
5	do do	$\frac{1}{2}$	ne	13			80	2260	320
6	Hornfort Michael	ne	nw	13			40	1020	
7	Meyer Henry A.	$\frac{1}{2}$	sw	13			80	2260	680
8	Kreihauer Jacob	$\frac{1}{2}$	se	13			80	2380	740
9	Rich John	$\frac{3}{2}$	nw	13			80	2380	720
10	do do	nw	nw	13			40	1140	
11	Strahm Lewis A.	$\frac{1}{2}$ ft	se	13			40	1140	180

SECTION No. 13

Congressional Township No. 26, R. 13

SCALE—Forty rods to an inch, or ten rods to a space, Congress Land, which is one mile square for a section.
Number of acres in this section, according to the United States Survey, 640.



COUNTY, INDIANA, 1907.

Assessor's Plat-Book for

Township, No.

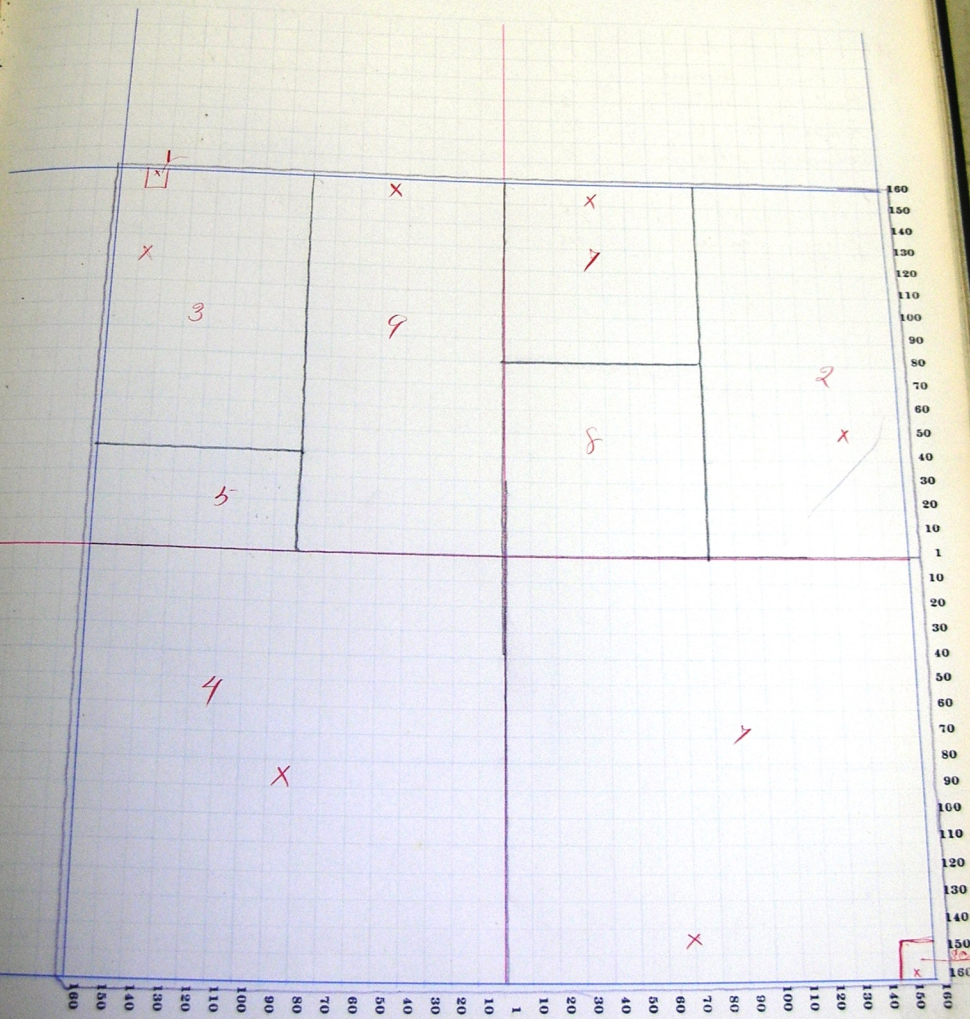
	NAMES OF OWNERS.	Number on Plat.	DESCRIPTION.	Section.	Township.	Range.	Acres.	Handwritten.	Value of Lands.	Value of Improvements.	Value of Lands and Improvements.
1	Ashbacher Christ		pt $\frac{1}{2}$	nw	14	26 13		30	20	80	
2	Aschleman John		$\frac{1}{2}$ ne	ne	14		80.		2260	470	
3	Beiter John		npt $\frac{1}{3}$	nw	14		59.50		7740	430	
4	Berber Christ		sw		14		160.		4640	770	
5	" "		$\frac{3}{2}$	sw	sw		20.		350		
6	Hoagland Eli		se				160.		4820	860	
7	Kijfer Ephraim		$\frac{1}{2}$ $\frac{1}{2}$	ne			40.		1180	630	
8	" "		sw	ne			40.		1160		
9	Kohler Alfred		$\frac{1}{2}$	nw.			80.		2380	420	

SECTION No. 14

Congressional Township No. 26, R. 13

SCALE—Forty rods to an inch, or ten rods to a space, Congress Land, which is one mile square for a section.
Number of acres in this section, according to the United States Survey, 640.

Value of
Land and
Improvements



Assessor's Plat-Book for

Township, No.

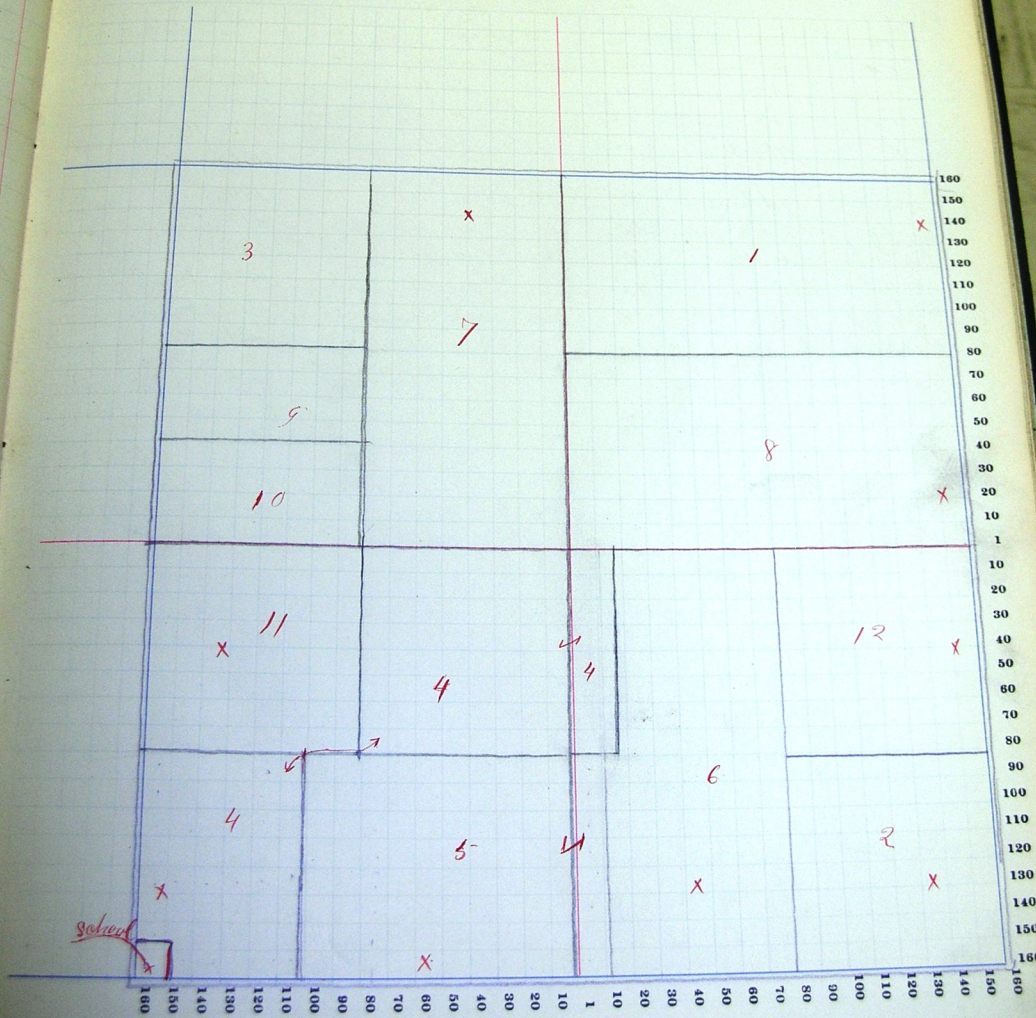
NAMES OF OWNERS.		Number on Plat.	DESCRIPTION.			Acres.	Hundredths.	Value of Land.	Value of Improvements.	Value of Land and Improvements.
			Section.	Township.	Range.					
1	1 Ashbacher Christ		1/2	ne	15-26-13	80	2340	560		
2	2 Baumgartner Joel		se	se	15	40	1140	490		
3	3 do do		nw	nw	15	40	1160			
4	4 do do		ft	sw	15	76.	2240	760		
5	5 do Benf. N.		ft	3/2	sw 15	36.	1660	530		
6	6 do Samuel		ft	1/2	se 15	66.	1970	600		
7	7 Bertsch Andrew		3/2		nw 15	80.	2420	860		
8	8 Kohler Fred C		3/2		ne 15	80	2350	700		
9	9 Schwartz John J.		1/2	sw	nw 15	20	590			
10	10 do Mary		3/2	sw	nw	20.	590			
11	11 do do		ft		sw	40	1180	780		
12	12 Jangg Louisa		ne		se	40.	1180	450		

SECTION No. 15

Congressional Township No. 26, R. 13

SCALE—Forty rods to an inch, or ten rods to a space, Congress Land, which is one mile square for a section.
Number of acres in this section, according to the United States Survey, 638.

Value of
Land and
Improvements



COUNTY, INDIANA, 1907.

Assessor's Plat-Book for

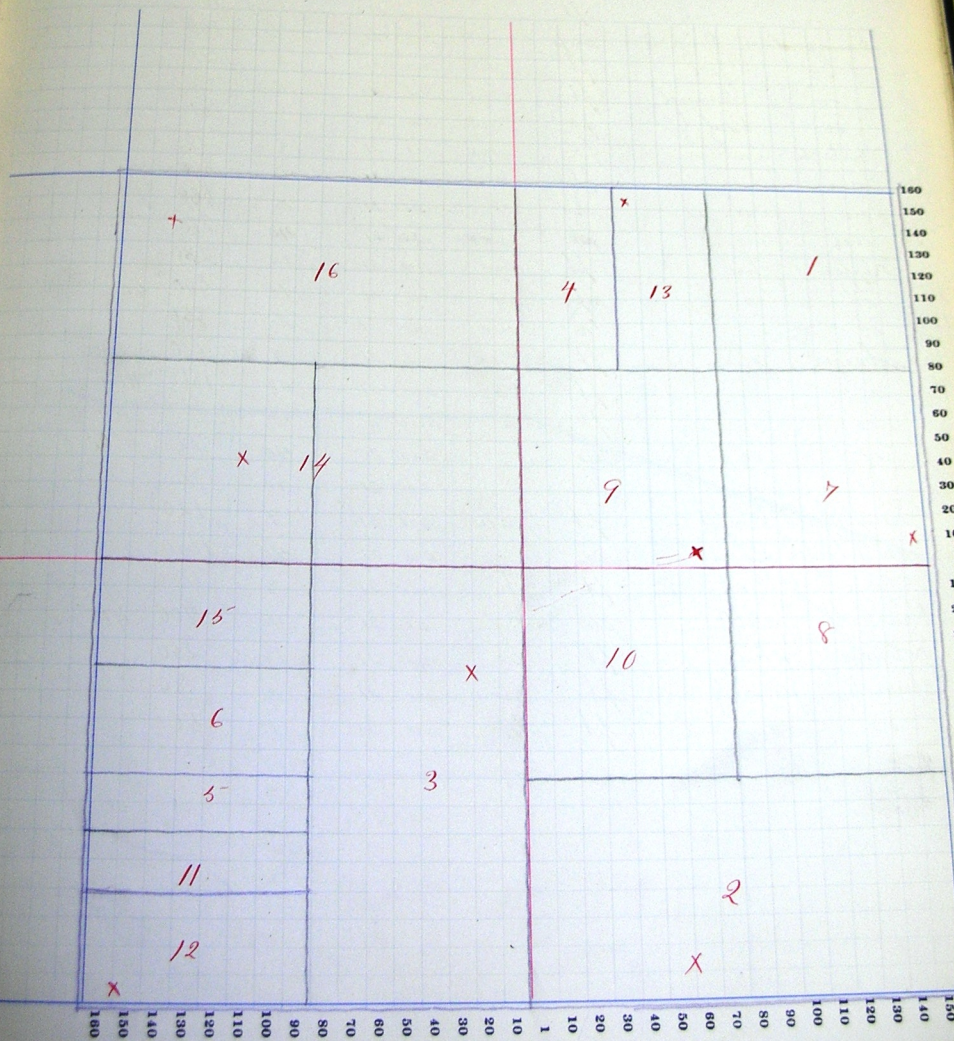
Township, No.

	NAMES OF OWNERS.		Number of Pts.	DESCRIPTION.	Section.	Township.	Range.	Acres.	Hundredths.	Value of Land.	Value of Improvements.	Value of Land and Improvements.
1	Hartman	Mary, C.		ne	ne	16	2618	40		1160		
2	Ripper	John		se	se	16		80		2100	760	
3	oo	Daniel		es	sw	16		80		1920	760	
4	oo	oo		w/2	nw	ne	16	20		360		
5	oo	oo		n/2	sw	sw	16	10		140		
6	oo	oo		s/2	nw	sw	16	20		280		
7	oo	St...		se	ne	16		40		1180	730	
8	oo	oo		ne	se	16		40		1180		
9	oo	Joel, A.		sw	ne	16		40		1180	760	
10	oo	oo		nw	se	16		40		1180		
11	Manner	Melchons		n/2	sw	sw	16	10		150		
12	oo	oo		s/2	sw	sw	16	20		270	250	
13	Menschwander	Aleric		es	nw	ne	16	20		580	180	
14	Stiffen	Tobias		s/2	nw	16		80		1980	720	
15	oo	oo		n/2	nw	sw	16	20		300		
16	Schivarty	Daniel		n/2	nw	16		80		2340	590	

SECTION No. 16

Congressional Township No. 26, R. 13

SCALE—Forty rods to an inch, or ten rods to a space, Congress Land, which is one mile square for a section.
Number of acres in this section, according to the United States Survey, 640

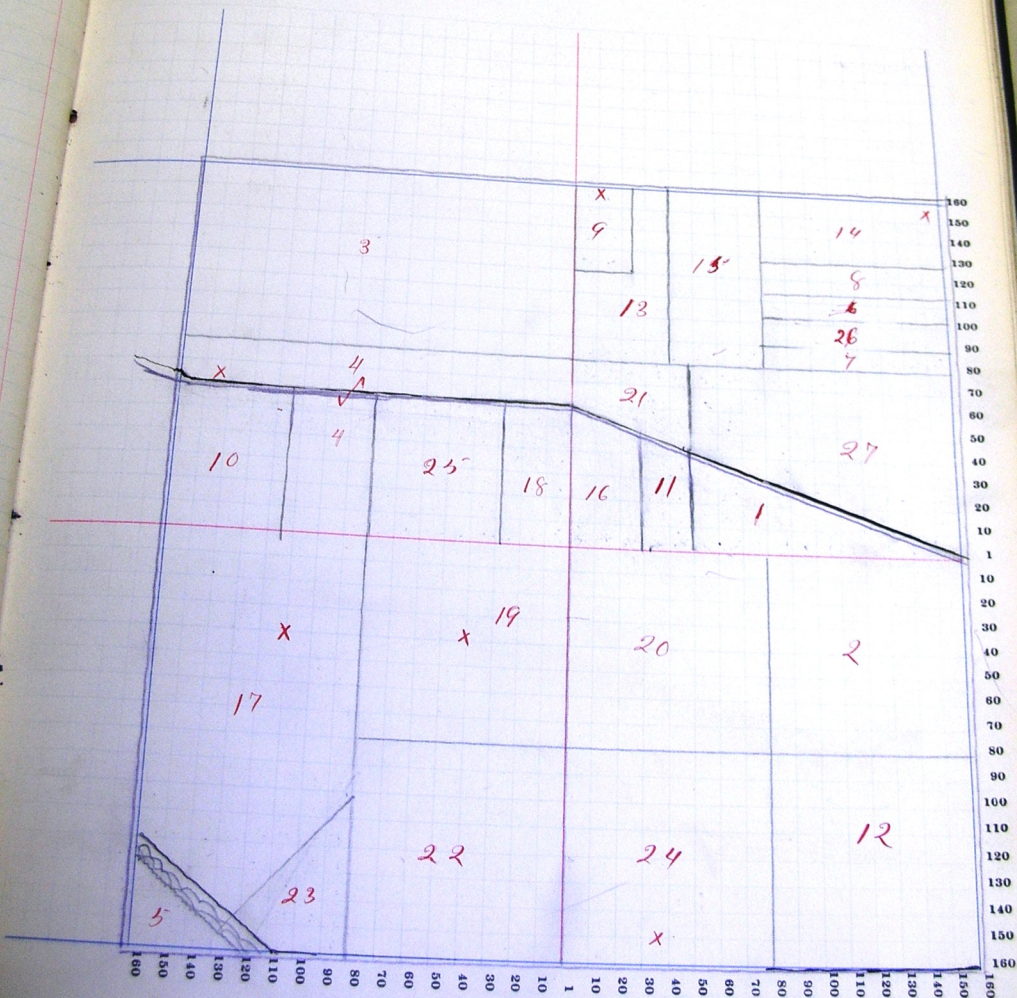


Number on Plat.	NAMES OF OWNERS.	DESCRIPTION.	Section.	Township.	Range.	Acres.	Hundredths.	Value of Land.	Value of Improvements.	Value of House and Other Improvements.
1	Allen Israel, P.	ft 3/2	ne 21	26 13	15	06	200			
2	or or	ne	se 21		40		700			
3	or or	1/2	sw 21		80		1170		570	
4	or or	ft 3/2	sw 21		35	46	500			
5	Baumgardner Benf. B.	swft	sw 21		4		100			
6	or Joel	ft	ne	ne 21	6		90			
7	or Samuel	ft	ne	ne 21	6		90			
8	or Benf. J.	ft	ne	ne 21	7		100			
9	Bertsch Andrew.	ft	sw	ne 31	6		90		430	
10	Bauer John	ft	sw	ne 21	17	42	340			
11	Balt Jacob	sw	ne	ne 21	5	73	100		40	
12	Jones Elias	se	sw	se 21	40		960			
13	Kipper John	ft	sw	ne 21	14		230			
14	or or	swft	ne	ne 21	16		400		40	
15	or or	se	sw	ne 21	20		350			
16	Lotsiger John	ft	1/2	ne 21	9	25	130			
17	or or	ft	1/2	sw 21	63		1860		410	
18	or or	ft	se	sw 21	10	60	150		20	
19	or or	ne	sw	21	40		720		450	
20	or or	sw	se	21	40		740			
21	Luginbill Christ	ft	sw	ne 21	9		120			
22	Mischberger Christ	se	sw	21	40		1140			
23	or or	ft	sw	sw 21	8		150			
24	Reinhart Fred C.	sw	se	21	40		1100		410	
25	Robison John	ft	se	sw 21	18	50	250			
26	Swartz John J.	ft	ne	ne 21	5		80			
27	or or or	ft	3/2	ne 21	40		560			

SECTION No. 21

Congressional Township No. 26, R. 13

SCALE—Forty rods to an inch, or ten rods to a space, Congress Land, which is one mile square for a section.
 Number of acres in this section, according to the United States Survey, 636.02



Assessor's Plat-Book for

Township, No.

Number of Plat.	NAMES OF OWNERS.	DESCRIPTION.			Acres.	Value of Land.	Value of Improvements.	Value of Building.
		Section.	Township.	Range.				
1	Baumgartner Samuel	pt	n/2	ne	22 26 13	10	240	
2	do Benf. H.	pt	ne	ne	22	20	470	
3	do do do	pt		ne	22	45	1180	
4	do do do	pt	n/2	sw	22	13	350	
5	Burns John	n/2	sw	nw	22	20	270	
6	do do	pt	n/2	sw	22	64	1230	390
7	Jones Elias	3/4	sw	sw	22	76	1840	720
8	Moser Anna	n/2		se	22	75	1760	360
9	Smith John Sr	pt		ne	22	76	1740	610
10	Warner John	3/4		se		75 30	1730	740
11	Williamson C. B. & H. K.	pt		nw		133 70	2600	630

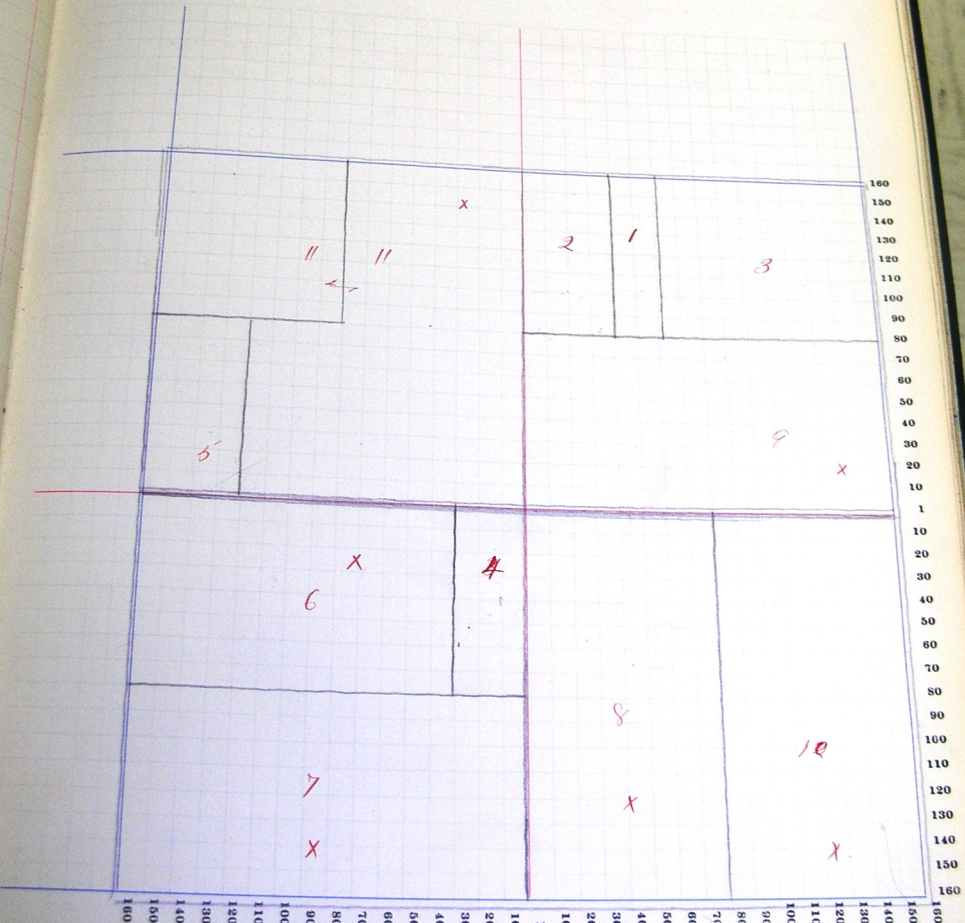
10 20 30 40 50 60 70 80 90

SECTION No. 22

Congressional Township No. 26, R. 13

SCALE—Forty rods to an inch, or ten rods to a space, Congress Land, which is one mile square for a section.
Number of acres in this section, according to the United States Survey, 610.2

Value of Land.	Value of Improvements.	Value of Taxes and Special Assessments.
240		
270		
300		
330		
360		
390		
420		
450		
480		
510		
540		
570		
600		
630		



Assessor's Plat-Book for

Township, No.

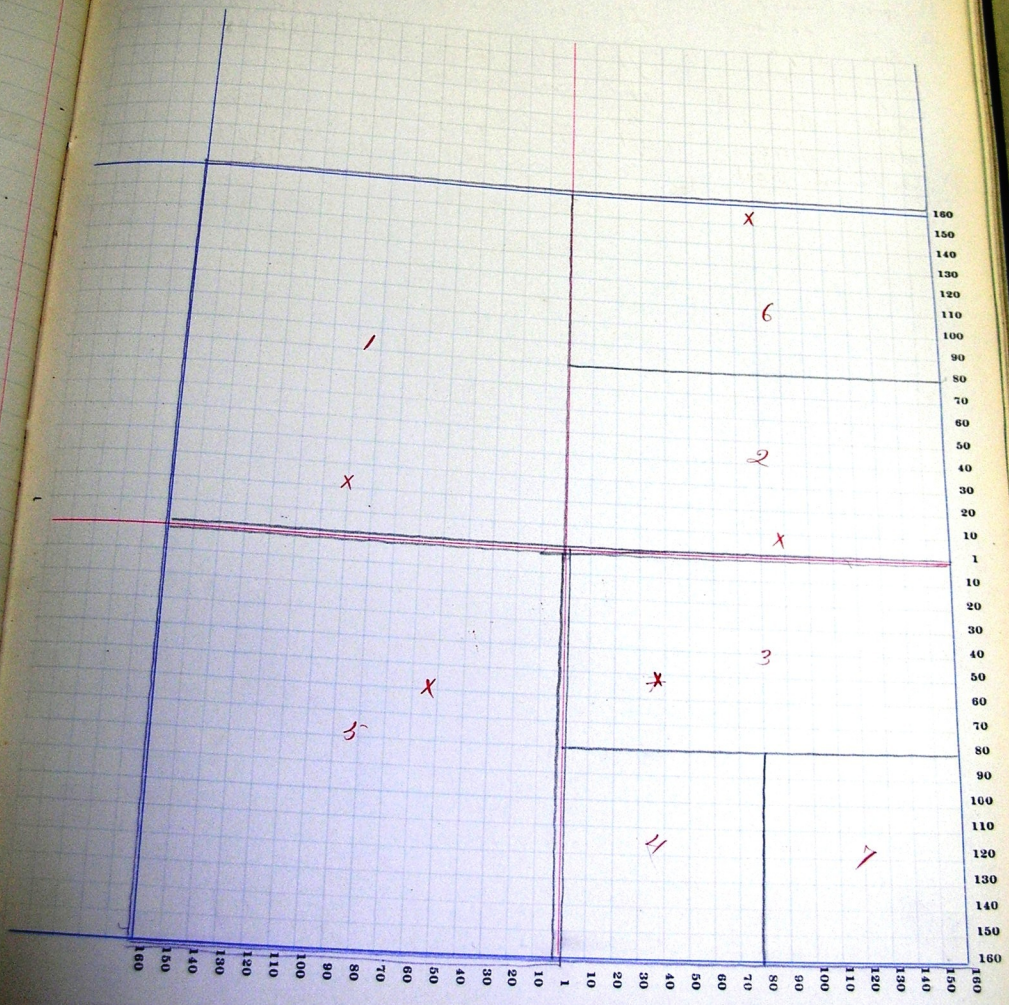
Number on Plat.	NAMES OF OWNERS.	DESCRIPTION.	Acres.			Value of Land.	Value of Improvements.	Value of Estate when last assessed.
			Section.	Township.	Range.			
1	Baier John	sw	23	26	13	160	4200	730
2	Bibersline Peter	ne	23			80	2340	790
3	Marshall Geo & Anna	ne	23			80	1780	780
4	Postal John & Cora	sw	23			40	760	
5		sw	23			160	3040	780
6	Leigrist Samuel	ne	23			80	2260	790
7	Steiner Jacob	se	23			40	980	

SECTION No. 23

Congressional Township No. 26, R. 13

SCALE—Forty rods to an inch, or ten rods to a space, Congress Land, which is one mile square for a section.
Number of acres in this section, according to the United States Survey, 640

Value of Improvements.	Value of Land and Improvements.
780	
790	
780	
780	
790	



Assessor's Plat-Book for

Township, No.

NAMES OF OWNERS.		Number of Plat.	DESCRIPTION.	Section.	Township.	Range.	Acres.	Value of Land.	Value of Improvements.	Value of Land and Improvements.
1	Bracker Jacob		ca	ne	24	26	13	80	2360	680
2	Woser Peter P		1/2	se	24			80	2420	1040
3	do do do		pt	sw	24			20	320	620
4	Rich Joseph		1/2	nw	24			78	2340	340
5	do do		pt	sw	24			80	2200	380
6	do do		nw	sw	24			73	20	
7	Roth Peter W.		1/2	nw	24			80	2400	380
8	Steiner Jacob		apt	sw	24			60	1600	740
9	Oulliman Jacob		1/2	se				80.	2380	1060
10	do do		1/2	ne				80.	2360	

SECTION No. 24

Congressional Township No. 26, R. 13

SCALE—Fifty rods to an inch, or ten rods to a space, Congress Land, which is one mile square for a section.
Number of acres in this section, according to the United States Survey, 646.25

Value of Land and Improvements
\$0
40
0

