

Adams  
COUNTY, INDIANA, 1903.

Assessor's Plat-Book for

Branch

Township, No. 26

NAMES OF OWNERS.	Number in Plat.	DESCRIPTION.	Acres.	Value of Land.	Value of Improvements.	Value of Land and Improvements.
Construb, John	1	sw	13 26 13 80	1675	625	
Franko, John	2	se	13 " " 40	900		
" "	3	pt 4/2 ne	13 " " 20	400		
" "	4	pt 4/2 ne	13 " " 60	1180	300	
" "	4	pt 4/2 ne	13 " " 80	1625	650	
Meyer, Henry &	5	sw 2	13 " " 80	1675	740	
Kerchauer, Jacob	6	sw 2	13 " " 60	1745	750	
Rich, John	7	sw	13 " " 40	810		
" "	8	sw	13 " " 40	740		
Hennepfort, Michael	9	ne	13 " " 40	825	115	
Strahn, Louis &	10	se	13 " " 80	1645	340	
Echlagenhauz, Joseph	11	ne				

SECTION No. 13

Congressional Township No. . R.

SCALE--Forty rods to an inch, or ten rods to a space, Congress Land, which is one mile square for a section.  
Number of acres in this Section, according to the United States Survey



Adams  
 COUNTY, INDIANA, 1903.

Assessor's Plat-Book for

French

Township, No. 20

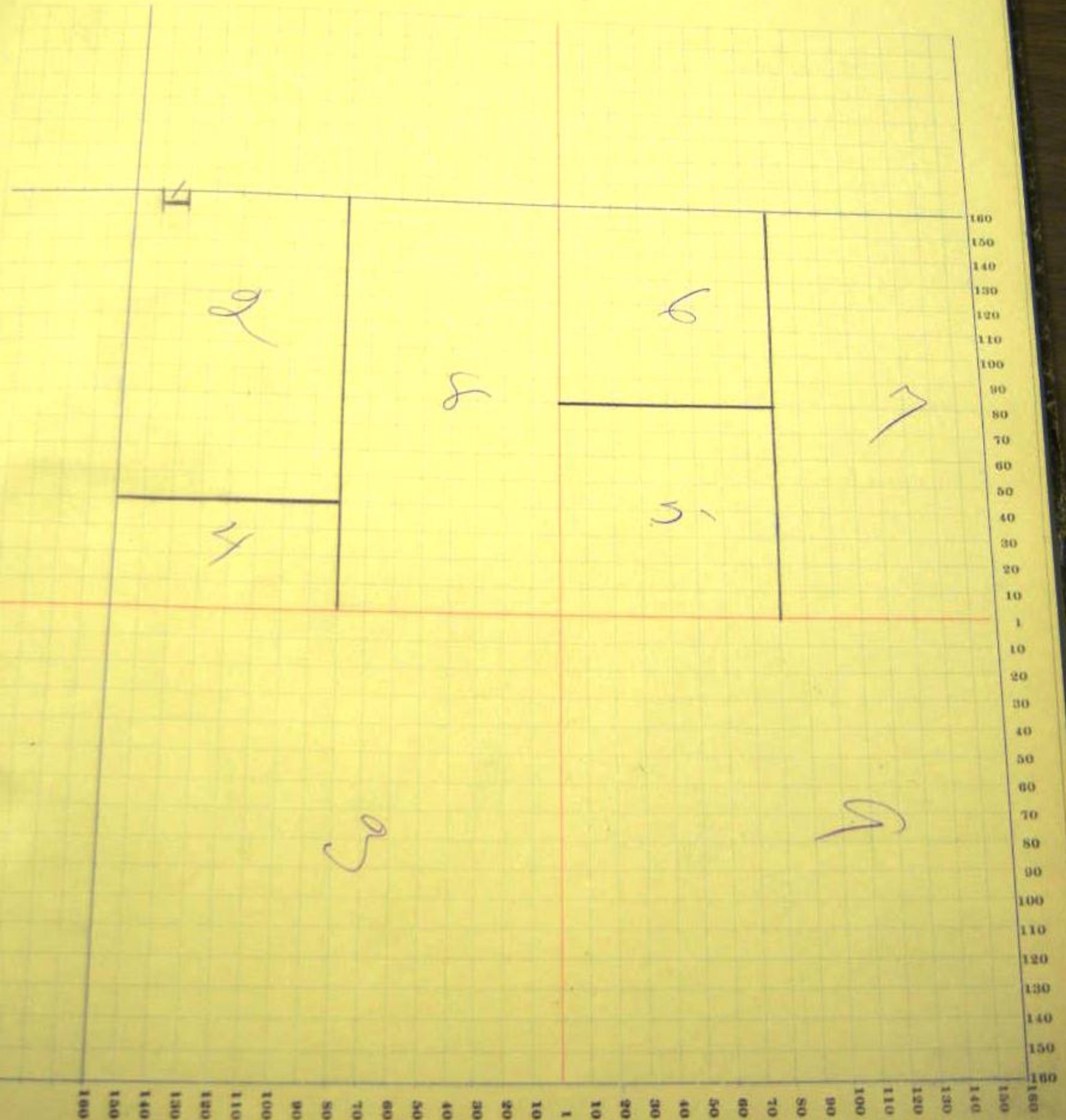
BY THE BOARD OF SUPERVISORS

NAMES OF OWNERS.	Number on Plat.	DESCRIPTION.	Section.	Township.	Range.	Acres.	Market Value.	Value of Land.	Value of Improvements.	Value of Land and Improvements.
Cashbacher Chris	1	pt w/2 sw	14	26	13	50	10	100		
Butler John	2	npt w/2 sw	14	"	"	59	50	1255	200	
Carter Chris	3	sw	14	"	"	160		3510	600	
" "	4	sw sw sw	14	"	"	20		410		
" "	4	sw sw sw	14	"	"	40		885		
Kipper W. Irish	5	sw w/2 ne	14	"	"	40		845	630	
" Ephraim	6	w/2 w/2 ne	14	"	"	40		245	630	
Kloppenstein Peter	7	sw ne	14	"	"	80		1650	510	
Kobler & Bradford	8	sw sw	14	"	"	80		1600	360	
Collins John W.	9	sw	14	"	"	160		3165	875	

SECTION No. 14

Congressional Township No. . R.

SCALE—Forty rods to an inch, or ten rods to a space, Congress Land, which is one mile square for a section.  
Number of acres in this Section, according to the United States Survey



Adams  
 COUNTY, INDIANA, 1903.

Assessor's Plat-Book for

Church

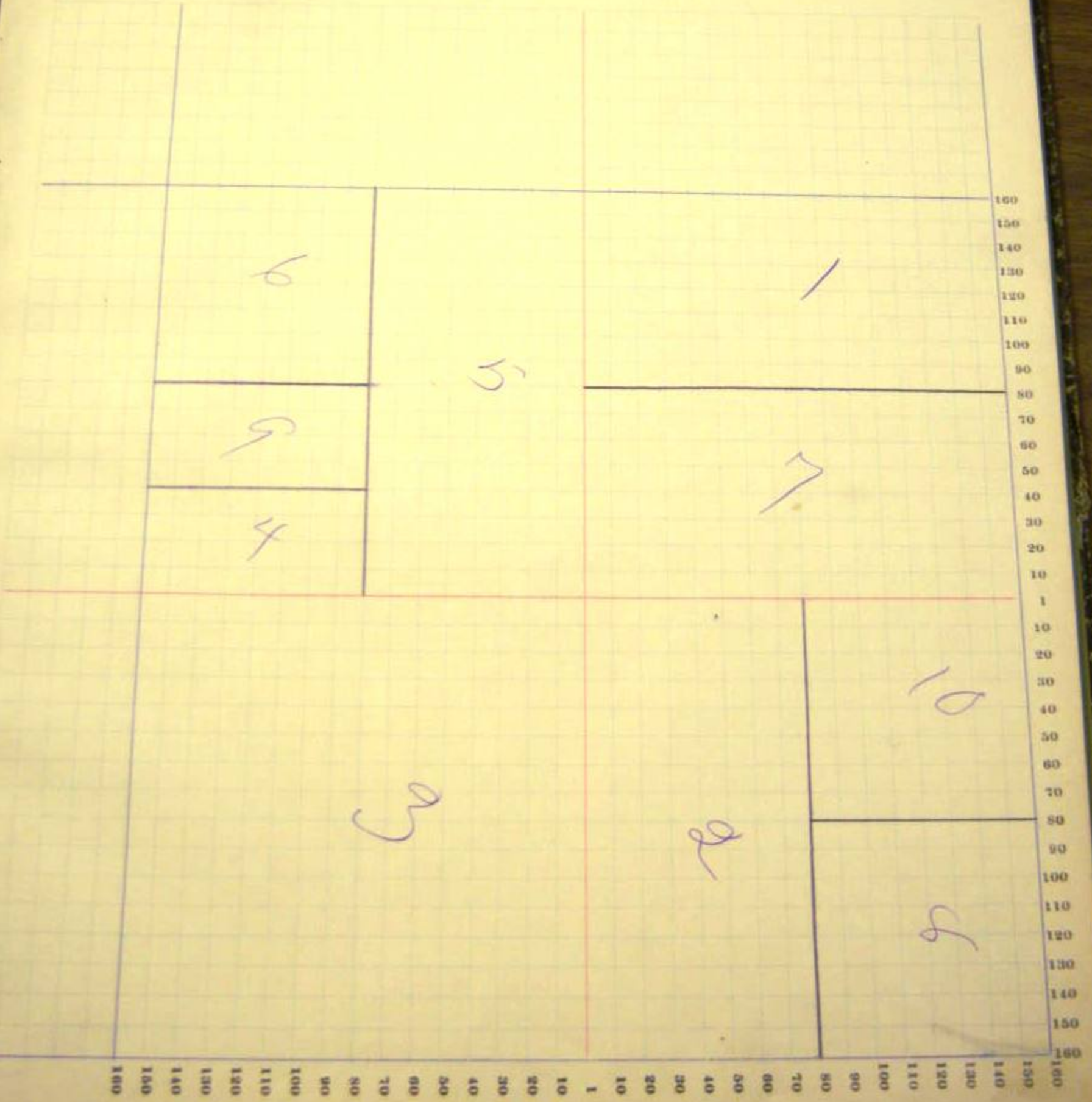
Township, No. 26

NAME OF OWNER	Number of Plats	DESCRIPTION	Section	Township	Range	Acres	Headaches	Value of Land	Value of Improvements	Value of Other
Agsthausen Chris	1	sw se	15	26	13	80		1760	700	
Ramngarten Fred	2	sw se	15	"	"	80		1665	700	
"	3	sw	15	"	"	139	of	3460	1675	
"	4	sw sw	15	"	"	20		400		
Bertsch Andrew	5	sw sw	15	"	"	80		1850	825	
Ramngarten Fred	6	sw sw	15	"	"	40		910		
Robb Fred	7	sw se	15	"	"	80		1660	220	
Siminger Benedict	8	sw se	15	"	"	240		875	550	
Echler John J	9	sw sw	15	"	"	20		440		
Gang Louisa	10	sw se	15	"	"	40		870	440	

SECTION No. 15

Congressional Township No. , R.

SCALE—Forty rods to an inch, or ten rods to a space, Congress Land, which is one mile square for a section.  
Number of acres in this Section, according to the United States Survey.





SECTION No. 16

Congressional Township No. \_\_\_\_\_, R. \_\_\_\_\_

SCALE—Forty rods to an inch, or ten rods to a space, Congress Land, which is one mile square for a section.  
Number of acres in this Section, according to the United States Survey

