

# ADAMS COUNTY, INDIANA, 1903.

Assessor's Plat-Book for

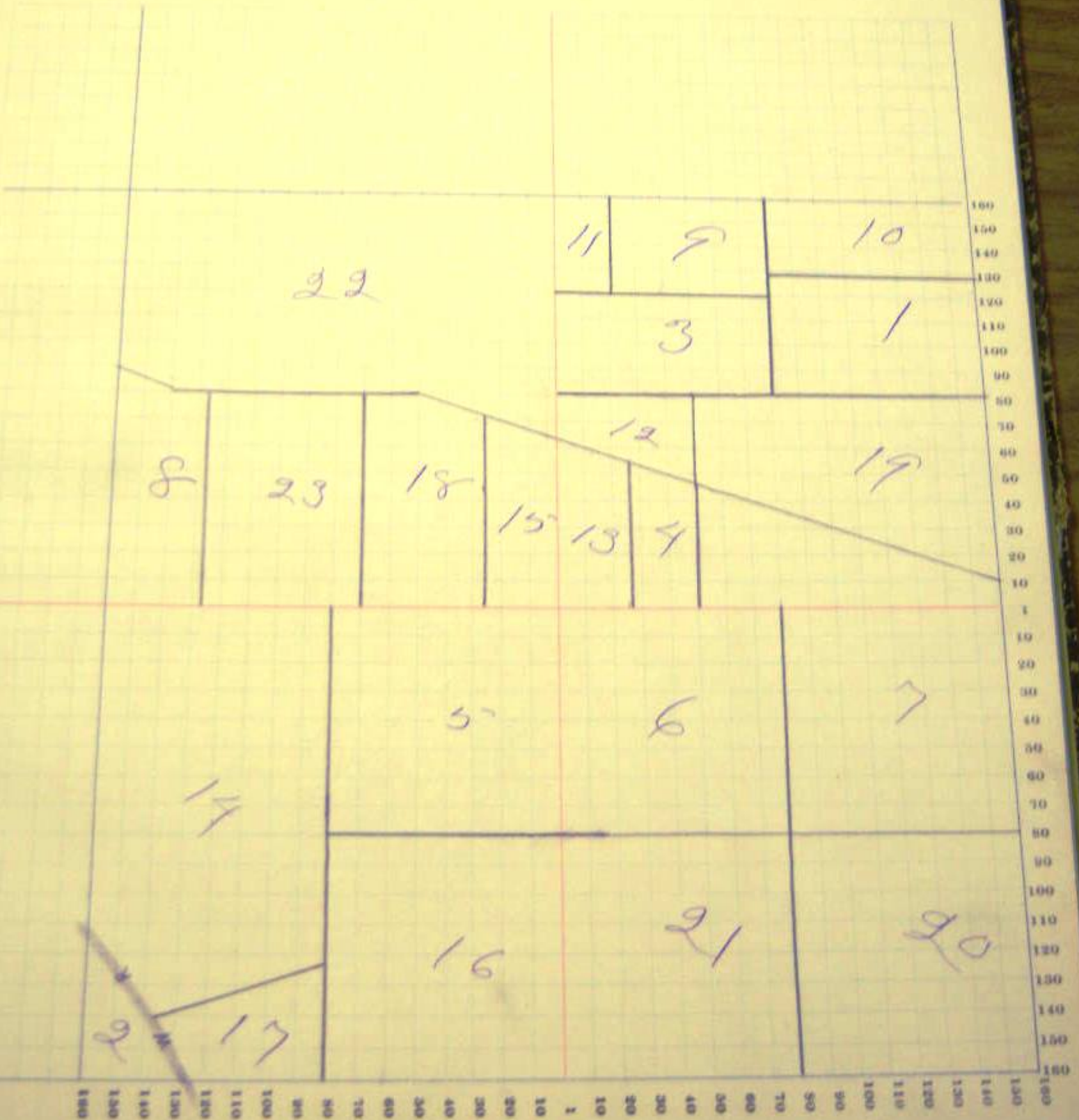
Township, No. 26

NAME OF OWNER	Number of Plats	DESCRIPTION	Acres	Value of Land	Value of Improvements	Total Value
Baumgartner Leah	1	apt ne ne	21 25 13 24	250		
" " " "	2	apt sw	21 " " 4	95		
Baker John et al	3	apt sw ne	21 " " 20	130		
Balt Foot	4	pt sw se	21 " " 5 73 85	40		
Clifton Adam	5	ne sw	21 " " 40	700	500	
" " "	6	sw se	21 " " 40	500		
Hecke Ferdinand	7	ne se	21 " " 17	43 290		
" " "	8	pt sw	21 " " 14	225		
Ripper John	9	pt sw ne	21 " " 16	370	50	
" " "	10	apt ne ne	21 " " 6	105	400	
" " " "	11	pt sw ne	21 " " 9	120		
Engelhart Christ	12	pt sw se	21 " " 9 25 105			
Lehner John	13	pt n/2 ne	21 " " 63	1900	425	
" " "	14	pt n/2 sw	21 " " 10 40 130	25		
" " "	15	pt se sw	21 " " 40	840		
Mueselberger Christ	16	se sw	21 " " 8	100		
" " "	17	pt apt sw	21 " " 18 50 190			
Power Jacob J	18	pt se sw	21 " " 55 46 360			
Meyer Peter	19	pt n/2 ne	21 " " 40	680		
Waltaker W. L.	20	se se	21 " " 40	910	365	
Benehart Paul	21	sw se	21 " " 80	930	575	
Front D. S. Co	22	n/2 sw	21 " " 35 46 405			
" " "	23	pt n/2 sw				

SECTION No. 21

Congressional Township No. \_\_\_\_\_, R. \_\_\_\_\_

SCALE—Forty rods to an inch, or ten rods to a space, Congress Land, which is one mile square for a section.  
Number of acres in this Section, according to the United States Survey



Adams

## COUNTY, INDIANA, 1903.

Assessor's Plat-Book for

Branch

Township, No. 26

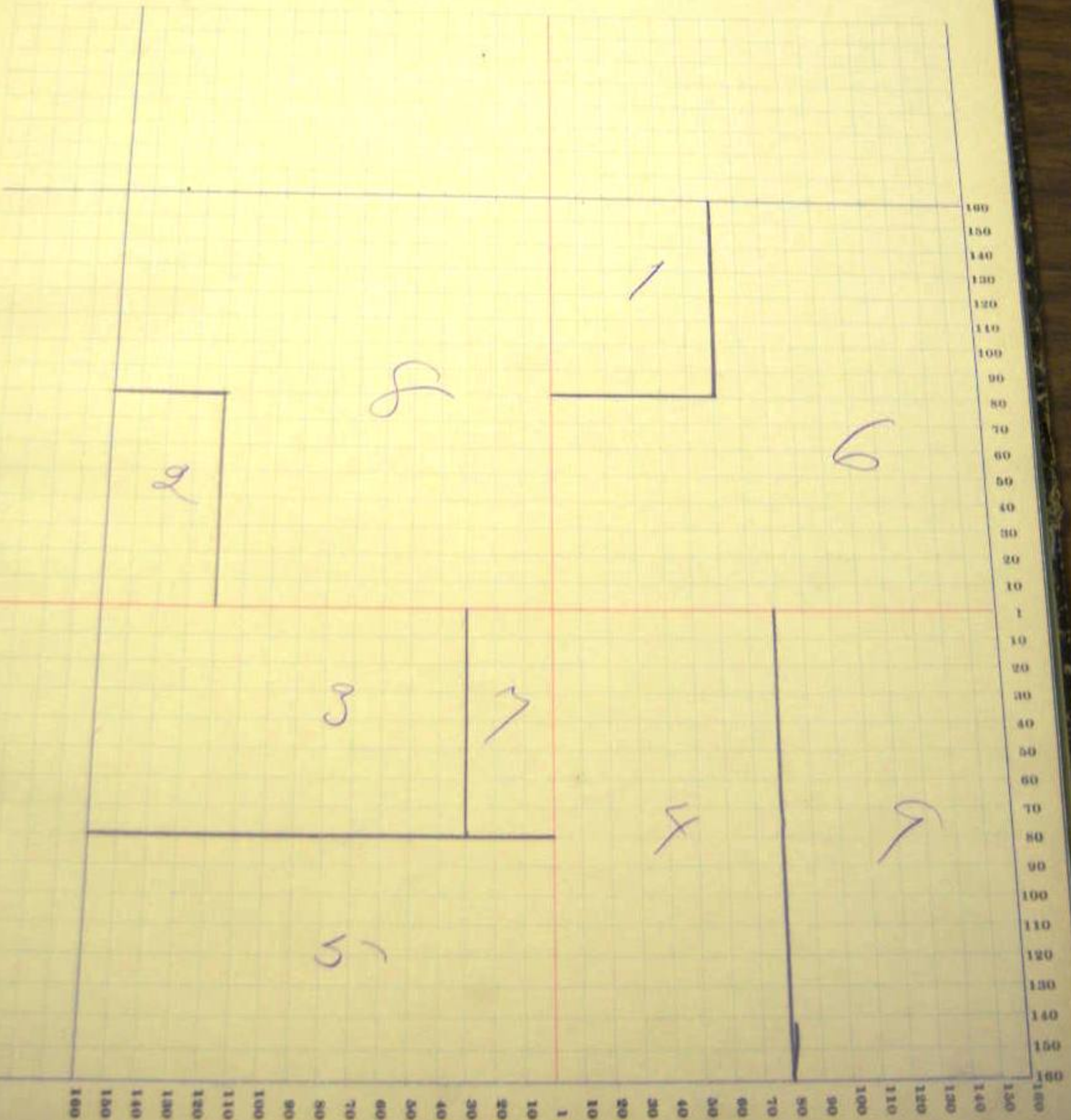
No. 1. COUNTY, INDIANA, 1903.

NAMES OF OWNERS	Number in Plat	DESCRIPTION.	Acres	Municipality	Value of Land	Value of Improvements	Value of Cattle and Horses
Bremington Nick	1	pt up on	23 26 13 30		585		
Bremington Nick & Susan	2	up on on	23 " " 20		240		
" "	3	pt up on	23 " " 64		750	360	
" "	4	up on	23 " " 75		1100	360	
Moss Anna	4	up on	23 " " 76		1575	700	
Koffaker J. W. & L.	5	up on	23 " " 121		2360	600	
Benneth John H.	6	pt on	23 " " 15		210		
" "	7	pt up on	23 " " 133		701775	650	
Swartz Anthony	8	pt on	23 " " 75	30	1040	360	
Warburton John	9	up on					

SECTION No. 22

Congressional Township No. . R.

SCALE—Forty rods to an inch, or ten rods to a space, Congress Land, which is one mile square for a section.  
Number of acres in this Section, according to the United States Survey \_\_\_\_\_

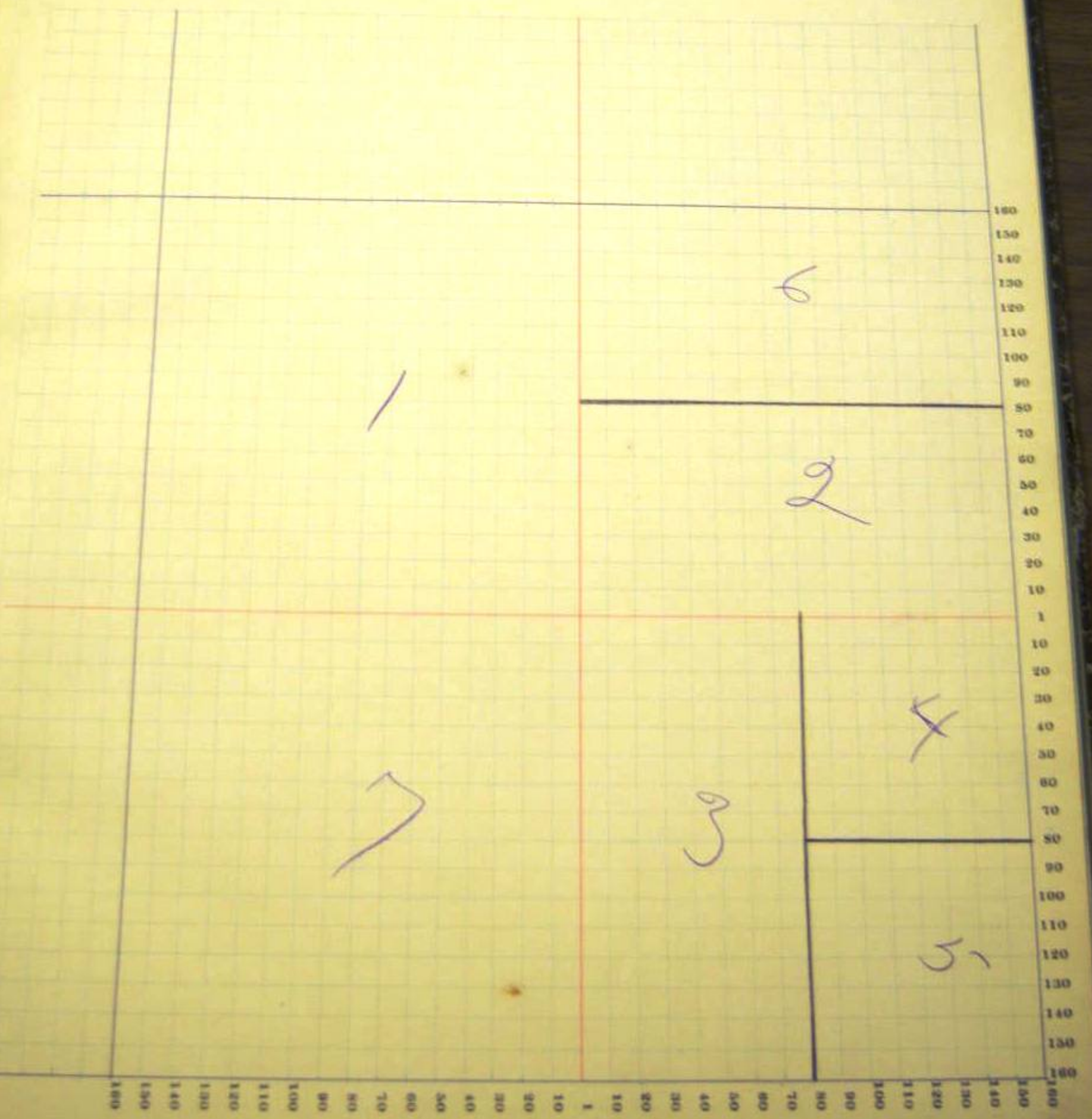




SECTION No. 23

Congressional Township No. . R.

SCALE—Forty rods to an inch, or ten rods to a space, Congress Land, which is one mile square for a section.  
Number of acres in this Section, according to the United States Survey



Adams

## COUNTY, INDIANA, 1903.

Assessor's Plat-Book for

Tremah

Township, No. 26

No. 6. IMPROVED PLAT BOOK FOR INDIANA

NAMES OF OWNERS.	Number on Plat.	DESCRIPTION.	Section.	Township.	Range.	Acres.	Hundredths.	Value of Lands.	Value of Improvements.	Value of Lands and Improvements.
Bracker Jacob Jr	1	ea ne	24	26	13	80		1825	600	
Moser Peter Jr	2	2/2 se	24	"	"	80		1815	650	
" "	3	pt ea sw	24	"	"	20		450		
Rick Joseph	4	w/2 nw	24	"	"	79	50	1775	350	
" "	5	pt sw	24	"	"	80		1775	400	
" "	6	nw cor nw	24	"	"		75	10		
Roth Peter D	7	ea nw	24	"	"	80		1800	450	
Stinner Jacob	8	spt sw	24	"	"	60		1230	700	
Mullmann Jacob	9	w/2 se	24	"	"	80		1820	1000	
" "	10	w/2 ne	24	"	"	80		1470		

SECTION No. 24

Congressional Township No. . R.

SCALE - Forty rods to an inch, or ten rods to a space, Congress Land, which is one mile square for a section.  
Number of acres in this Section, according to the United States Survey.

