

Address

COUNTY, INDIANA, 1903.

Assessor's Plat-Book for

Greene

Township, No. 26

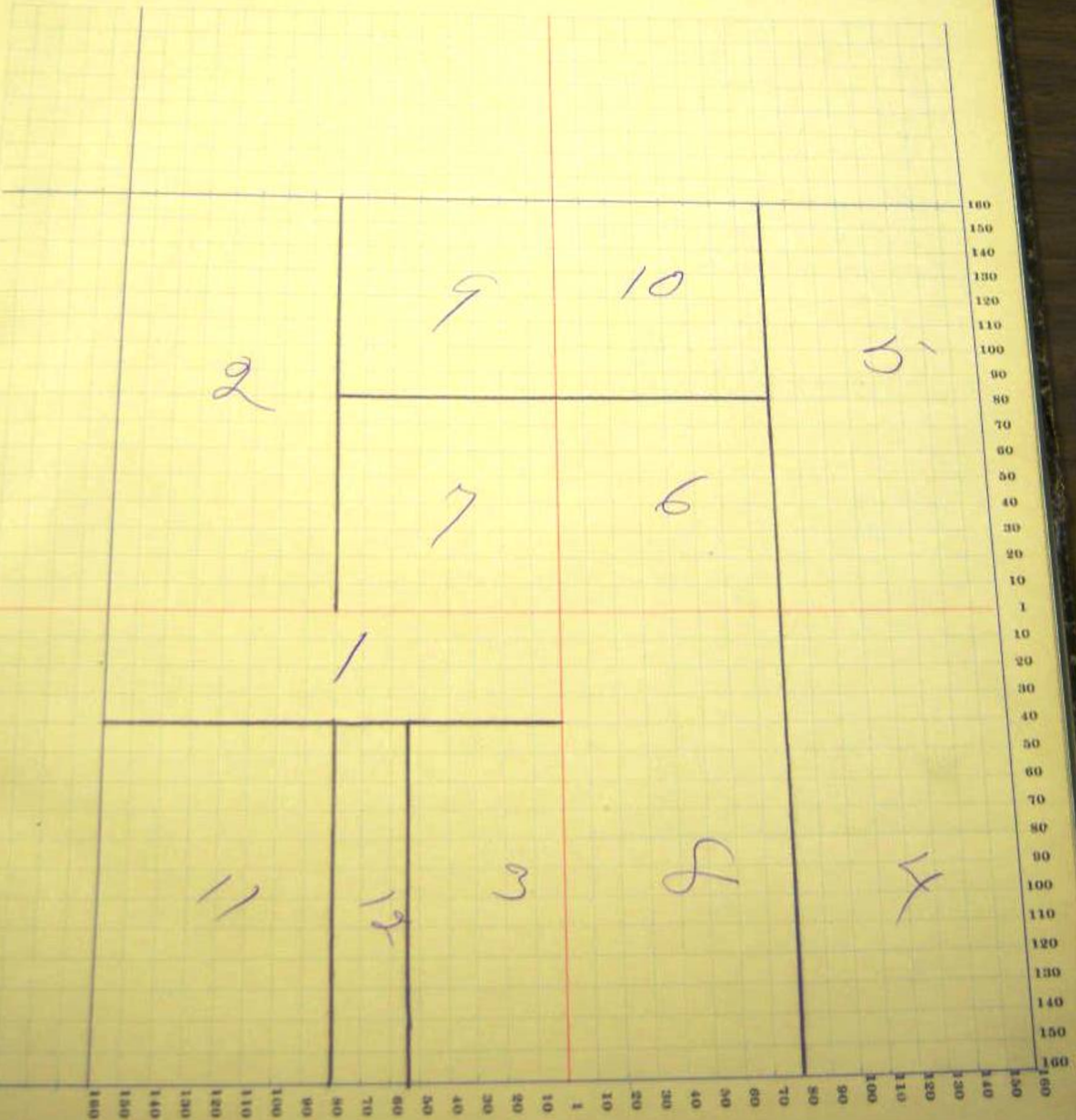
RE. A. BISHOP, PLAT BOOK & CO., CHICAGO

NAMES OF OWNERS.	Number on Plat.	DESCRIPTION.	Section.	Township.	Range.	Acres.	Homestead.	Value of Land.	Value of Improvements.	Value of Land and Improvements.
Bush John	1	ne ne sw	25	26	15	40		900		
" "	2	ne se sw	25	"	"	80		1890	800	
Huser John	3	apt sw	25	"	"	40		700		
" "	4	se se	25	"	"	80		1800	300	
Liechty Jacob P	5	se se	25	"	"	80		1825	600	
Moser John S	6	sw se	25	"	"	40		950		
" "	7	se sw	25	"	"	40		950		
" "	8	ne se	25	"	"	80		1785		
Kerhauer John	9	se sw	25	"	"	40		915	325	
" "	10	sw se	25	"	"	40		915	325	
Yager Chas	11	apt ne se sw	25	"	"	60		1395	600	
" Magdalena	12	pt se sw	25	"	"	20		465		

SECTION No. 25

Congressional Township No. , R.

SCALE—Forty rods to an inch, or ten rods to a space, Congress Land, which is one mile square for a section.  
Number of acres in this Section, according to the United States Survey





CITY OF INDIANAPOLIS

# COUNTY, INDIANA, 1903.

Assessor's Plat-Book for

French

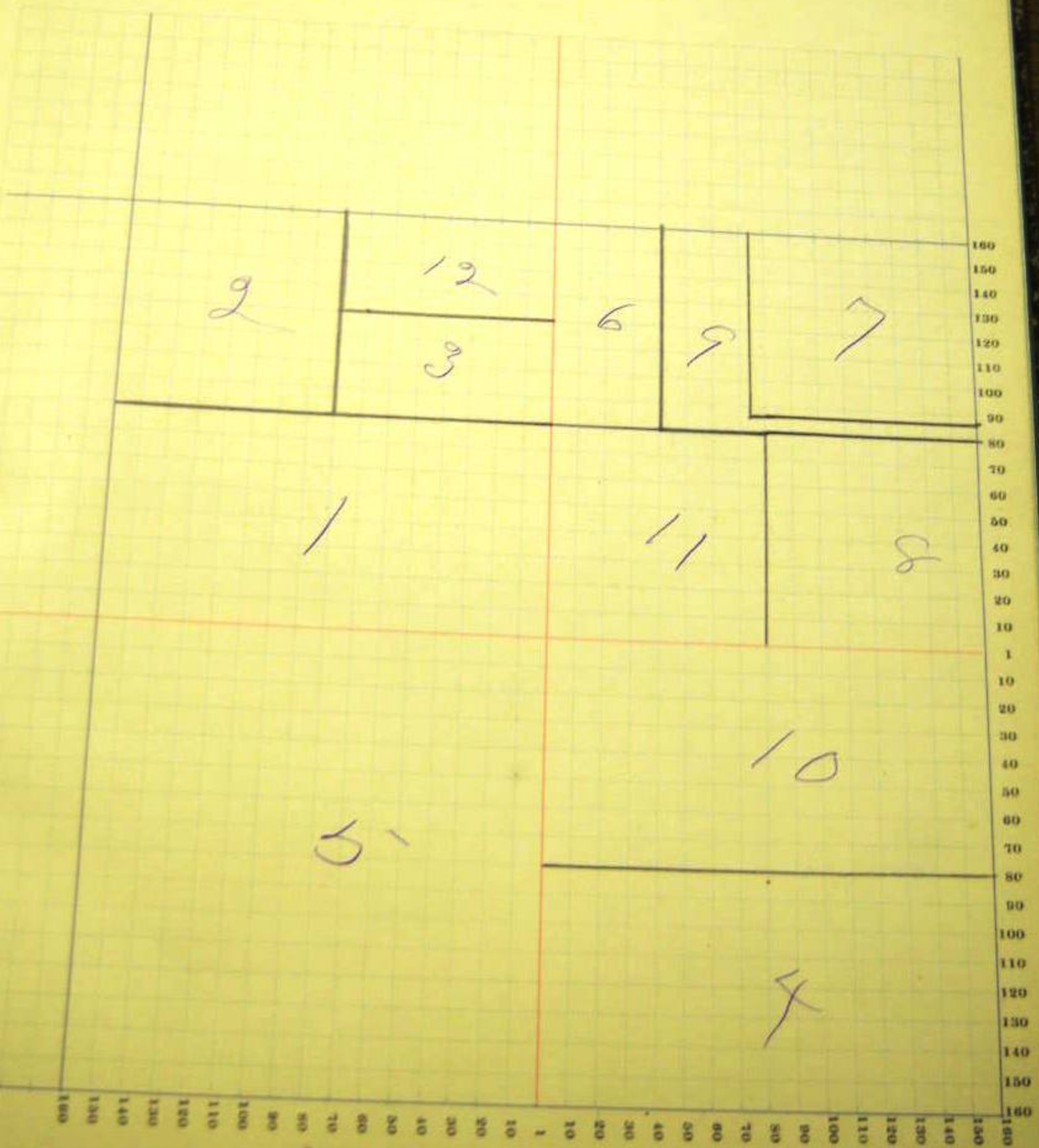
Township, No. 26

NAMES OF OWNERS	Number of Plots	DESCRIPTION	Area			Municipality	Value of Land	Value of Improvements	Value of Land and Improvements
			Acres	Sq. Feet	Perches				
Engelberger Barbara	1	eye sw	26	26	13	50	1900		
" "	2	eye eye sw	26	26	13	40	500	25	
Robert Relfert	3	eye ee eye sw	26	26	13	20	190	90	
Wagner John	4	eye ee	26	26	13	50	1160	550	
Wagner Dan & John	5	sw	26	26	13	160	2775	760	
Wichmann John	6	pt eye ne	26	26	13	20	21	310	
Roth John	7	ne ee	26	26	13	40	855	350	
" "	8	pt ne	26	26	13	40	790		
" "	9	pt ne	26	26	13	19	75	515	
Schmidt Barbara	10	eye ee	26	26	13	80	1080		
Stucky Nick	11	sw ne	26	26	13	40	520	450	
Thuyg Rudolph	12	eye ee sw	26	26	13	20	190	190	

SECTION No. 26

Congressional Township No. . R.

SCALE—Forty rods to an inch, or ten rods to a space, Congress Land, which is one mile square for a section.  
Number of acres in this section, according to the United States Survey





*Adams*

COUNTY, INDIANA, 1903.

Assessor's Plat-Book for

*French*

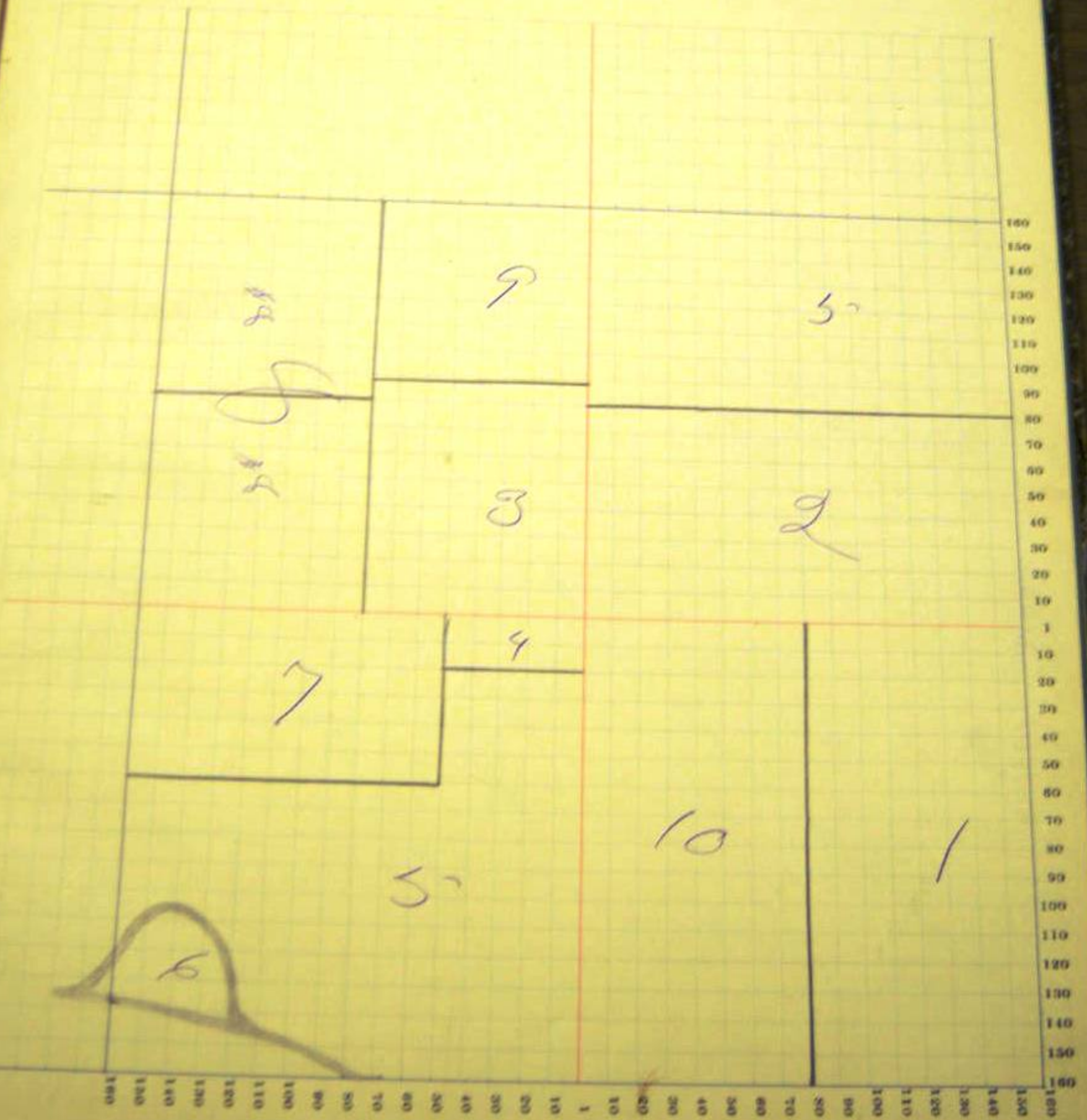
Township, No. *26*

NAME OF OWNER.	Number on Plat.	DESCRIPTION.	Section.	Township.	Range.	Acres.	Headed like	Value of Land.	Value of Improvements.	Value of Crops and Improvements.
<i>Amesberger Barbara</i>	1	<i>w/2 se</i>	27	26	13	74 91		1755	825	
<i>Clarke Chas J</i>	2	<i>w/2 ne</i>	27	"	"	75		1510	608	
<i>Luginbill Chas</i>	3	<i>se sw</i>	27	"	"	44		1035	775	
<i>" "</i>	4	<i>spt ne sw</i>	27	"	"	6		145		
<i>Lehman David</i>	5	<i>w/2 ne</i>	27	"	"	75 40		1400	500	
<i>" "</i>	5	<i>pt sw</i>	27	"	"	94		2325	700	
<i>Wooer Peter W</i>	6	<i>sw/4 sw</i>	27	"	"	5		70		
<i>" "</i>	7	<i>spt sw</i>	27	"	"	37 50		905	330	
<i>Kuenschwender Jonas</i>	8	<i>w/2 sw</i>	27	"	"	80		1865	1200	
<i>Rinehart Fred S</i>	9	<i>ne sw</i>	27	"	"	36		850		
<i>Schmidt Koh</i>	10	<i>w/2 se</i>	27	"	"	74		1715	625	

SECTION No. 27

Congressional Township No. . R.

SCALE—Forty rods to an inch, or ten rods to a space, Congress Land, which is one mile square for a section.  
Number of acres in this Section, according to the United States Survey





*Adams*

COUNTY, INDIANA, 1903.

Assessor's Plat-Book for

*Greencastle*

Township, No. *25*

NAME OF OWNER	Number on Plat	DESCRIPTION	Section	Township	Range	Acres	Municipality	Value of Land	Value of Improvements	Total Value
<i>Cammington Bay</i>	<i>1</i>	<i>pt fr lot 2</i>	<i>23</i>	<i>10</i>	<i>7</i>	<i>75</i>				
<i>Lucas Louis</i>	<i>2</i>	<i>pt fr lot 2</i>	"	"	"	<i>15</i>	<i>60</i>	<i>425</i>		
<i>McBryer Christ</i>	<i>3</i>	<i>pt me</i>	"	"	"	<i>70</i>	<i>1500</i>	<i>45</i>		
"	<i>4</i>	<i>eye me</i>	"	"	"	<i>80</i>	<i>1750</i>	<i>100</i>		
"	<i>5</i>	<i>eye eye me</i>	"	"	"	<i>40</i>	<i>980</i>			
<i>Mason Peter H</i>	<i>6</i>	<i>pt ac fr</i>	"	"	"	<i>50</i>	<i>1100</i>	<i>35</i>		
<i>Munichhandy John</i>	<i>7</i>	<i>ac ac me</i>	"	"	"	<i>40</i>	<i>930</i>			
<i>Reynolds J. W.</i>	<i>8</i>	<i>pt me ac</i>	"	"	"	<i>5</i>	<i>33</i>	<i>115</i>		
"	<i>9</i>	<i>pt fr ac</i>	"	"	"	<i>23</i>	<i>55</i>	<i>420</i>		
<i>Moore John</i>	<i>10</i>	<i>pt me ac</i>	"	"	"	<i>4</i>	<i>90</i>	<i>35</i>		
"	<i>11</i>	<i>pta eye ac</i>	"	"	"	<i>40</i>	<i>905</i>			
" <i>Jonathan</i>	<i>12</i>	<i>eye ac ac</i>	"	"	"	<i>20</i>	<i>405</i>	<i>160</i>		
<i>Reynolds Andrew</i>	<i>13</i>	<i>pt me ac</i>	"	"	"	<i>10</i>	<i>65</i>	<i>250</i>		
"	<i>14</i>	<i>pt fr ac</i>	"	"	"	<i>46</i>	<i>65</i>	<i>995</i>	<i>200</i>	
<i>Steiner John</i>	<i>15</i>	<i>pt lot 3</i>	"	"	"	<i>50</i>	<i>75</i>	<i>1025</i>		
"	<i>16</i>	<i>opt ac</i>	"	"	"	<i>76</i>	<i>65</i>	<i>1575</i>	<i>525</i>	
<i>Steiner Frederick</i>	<i>17</i>	<i>pt lot 3</i>	"	"	"	<i>3</i>	<i>62</i>	<i>75</i>		
"	<i>18</i>	<i>opt ac</i>	"	"	"	<i>5</i>	<i>35</i>	<i>105</i>	<i>35</i>	
<i>Rumyer David</i>	<i>19</i>	<i>pt ac</i>	"	"	"	<i>26</i>	<i>450</i>			



SECTION No. 28

Congressional Township No. . R.

SCALE - Forty rods to an inch, or ten rods to a space, Congress Land, which is one mile square for a section.  
Number of acres in this section, according to the United States Survey

