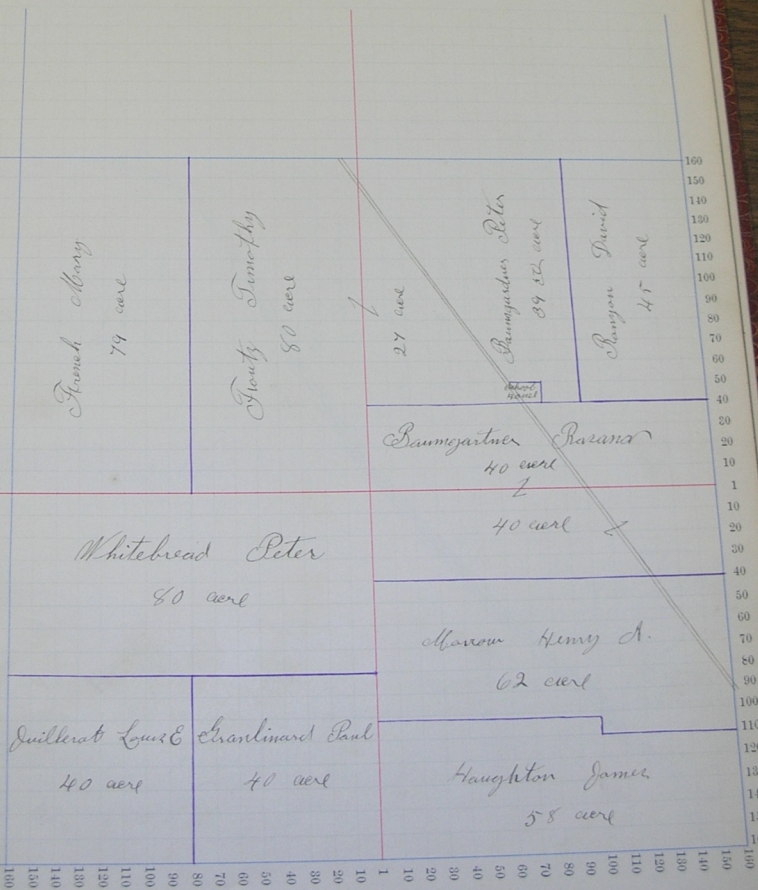
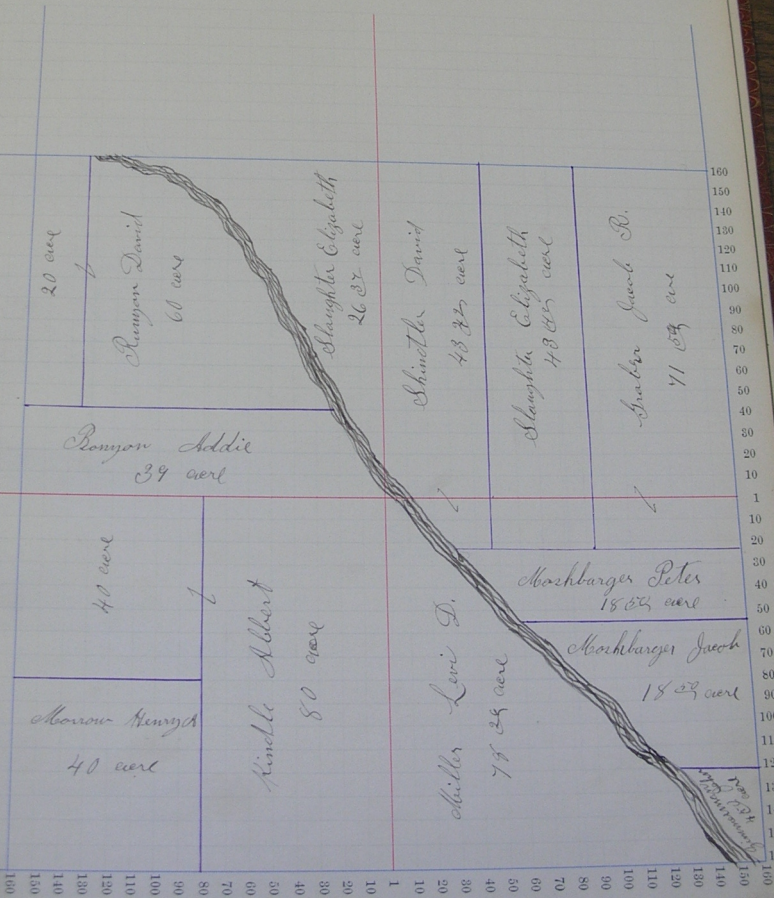


Scale—Forty rods to an inch, or ten rods to a space, Congress Land, which is one mile square for a section.
Number of acres in this section, according to the United States Survey, _____



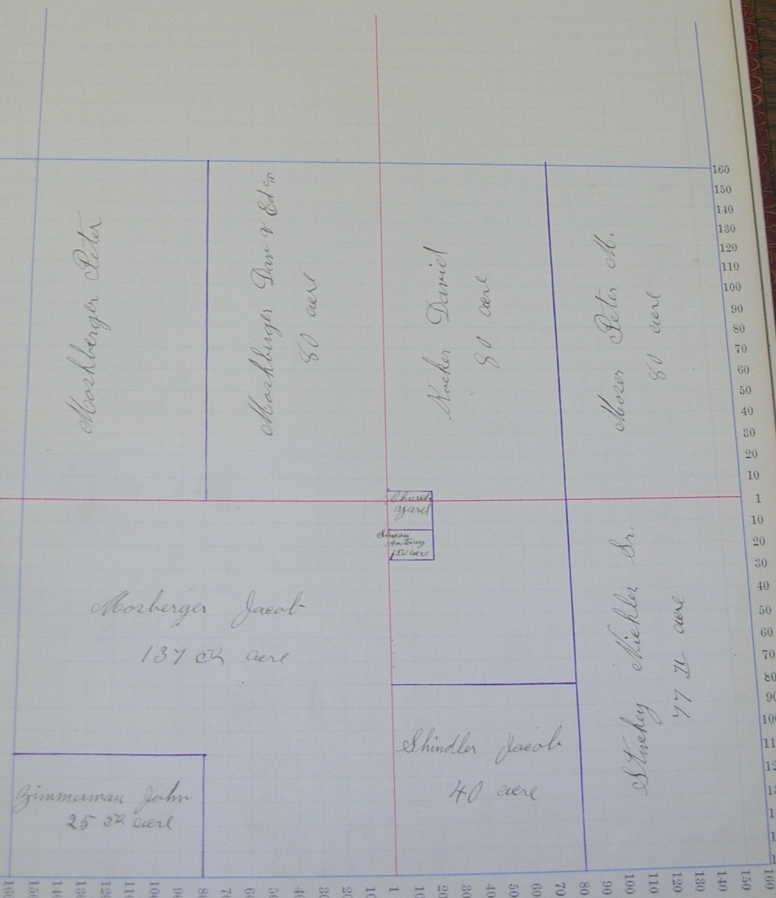
Scale—Forty rods to an inch, or ten rods to a space, Congress Land, which is one mile square for a section.
Number of acres in this section, according to the United States Survey, _____



Section No. 25

Congressional Township No. 26, R. 13

Scale—Forty rods to an inch, or ten rods to a space, Congress Land, which is one mile square for a section.
Number of acres in this section, according to the United States Survey, _____



Moschberger Peter
80 aers

Moschbergs Jun & Ed
80 aers

Maeker Daniel
80 aers

Moser Peter etc.
80 aers

Mosberger Jacob
137 1/2 aers

Gimmanan John
25 1/2 aers

Shindler Jacob
40 aers

Stueckey Chiekle Dr.
77 1/2 aers

House
yard
15 aers

160
150
140
130
120
110
100
90
80
70
60
50
40
30
20
10
1
10
20
30
40
50
60
70
80
90
100
110
120
130
140
150
160

160
150
140
130
120
110
100
90
80

Section No. 36

Congressional Township No. 24, R. 13

Scale—Forty rods to an inch, or ten rods to a space, Congress Land, which is one mile square for a section.
Number of acres in this section, according to the United States Survey, _____

