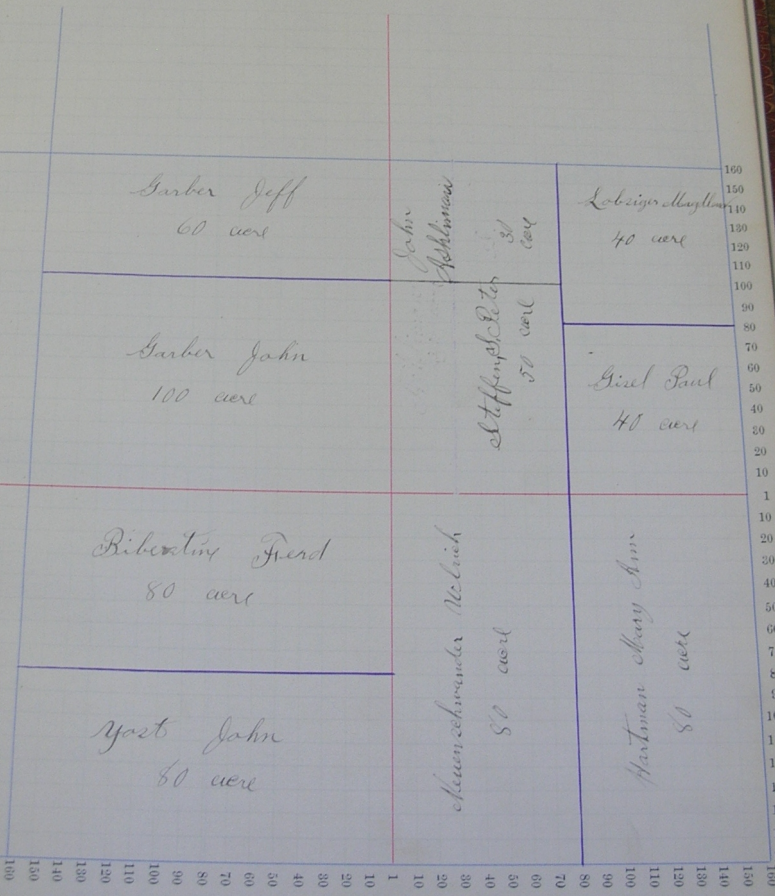
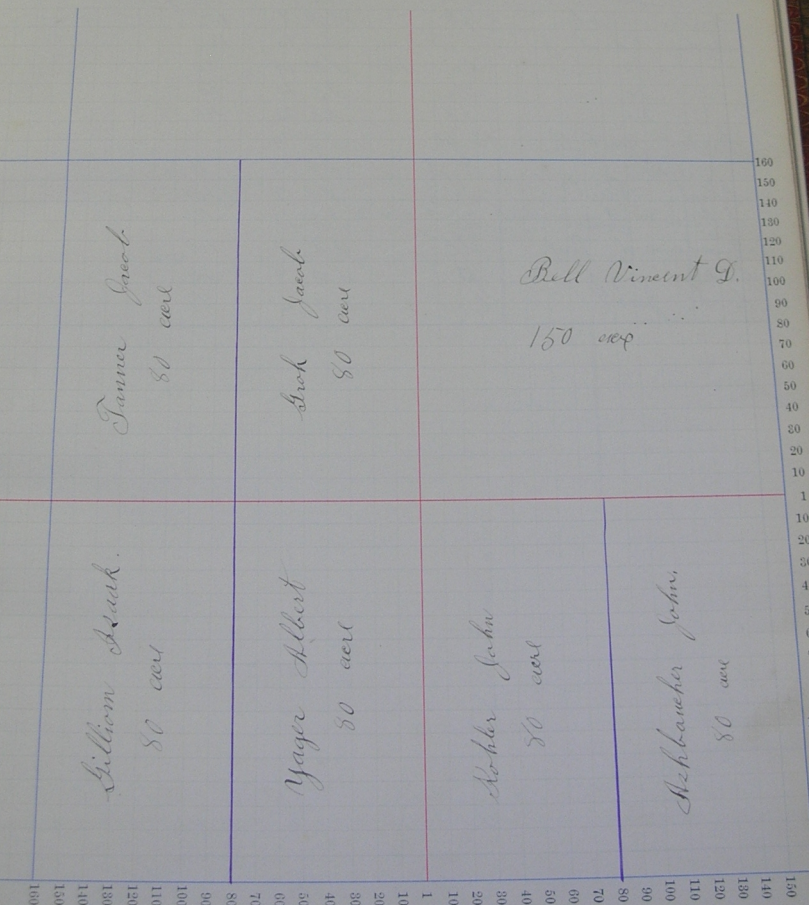


Scale—Forty rods to an inch, or ten rods to a space, Congress Land, which is one mile square for a section.
Number of acres in this section, according to the United States Survey, _____

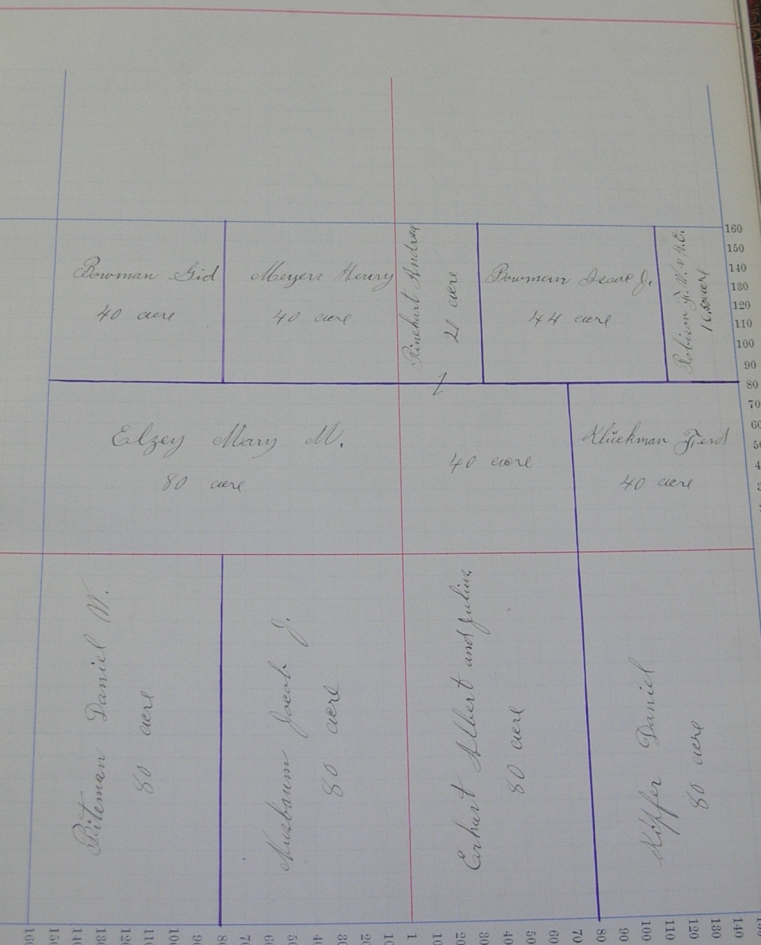


Scale—Forty rods to an inch, or ten rods to a space, Congress Land, which is one mile square for a section.

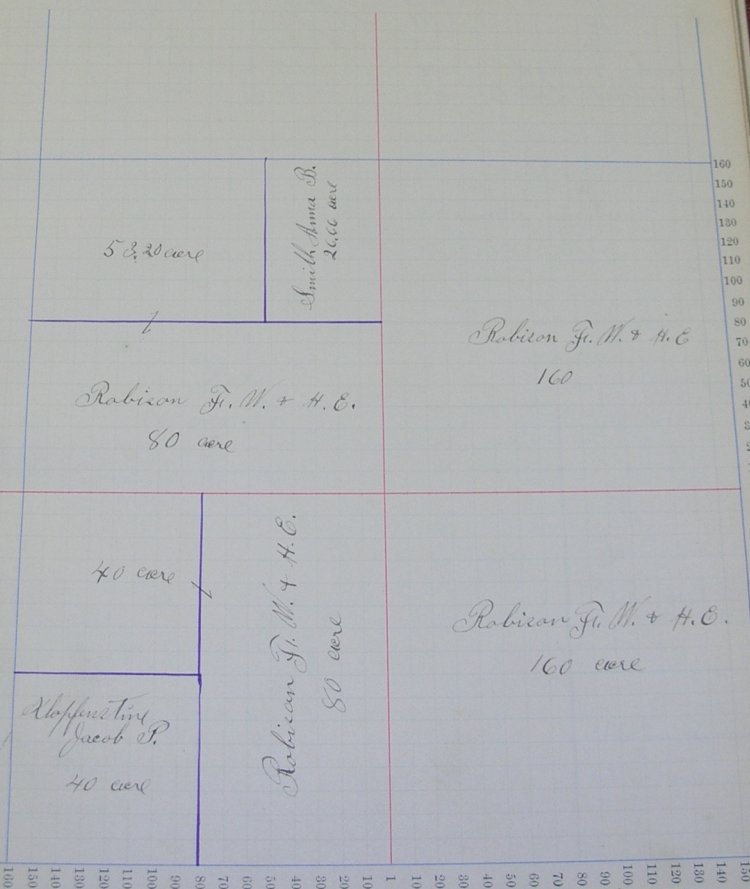
Number of acres in this section, according to the United States Survey, _____



Scale—Forty rods to an inch, or ten rods to a space, Congress Land, which is one mile square for a section.
Number of acres in this section, according to the United States Survey, _____



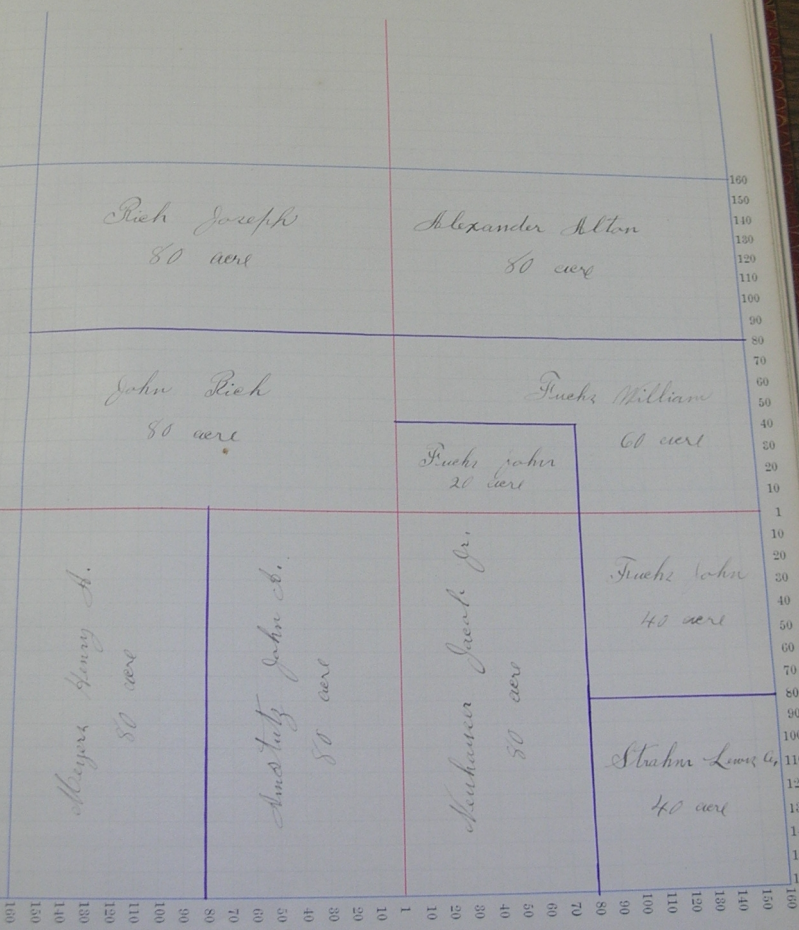
Scale—Forty rods to an inch, or ten rods to a space, Congress Land, which is one mile square for a section.
Number of acres in this section, according to the United States Survey, _____



Section No. 13

Congressional Township No. 26, R. 13

Scale—Forty rods to an inch, or ten rods to a space, Congress Land, which is one mile square for a section.
Number of acres in this section, according to the United States Survey, _____



Rick Joseph
80 acre

Alexander Alton
80 acre

John Rick
80 acre

Fuchs William
60 acre

Fuchs John
20 acre

Meyers Henry A.
80 acre

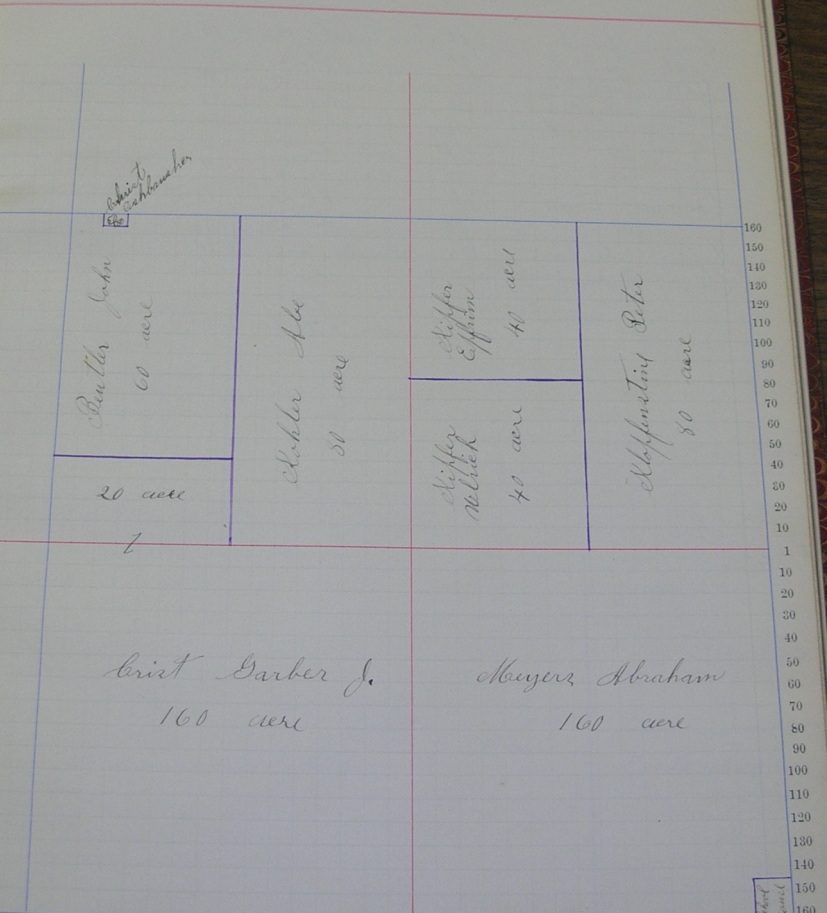
Amschutz John S.
80 acre

Neubauer Jacob Jr.
80 acre

Fuchs John
40 acre

Strahn Lewis G.
40 acre

Scale—Forty rods to an inch, or ten rods to a space, Congress Land, which is one mile square for a section.
Number of acres in this section, according to the United States Survey, _____



Scale—Forty rods to an inch, or ten rods to a space, Congress Land, which is one mile square for a section.
Number of acres in this section, according to the United States Survey, _____

