

Madama

Harford

Township, No.

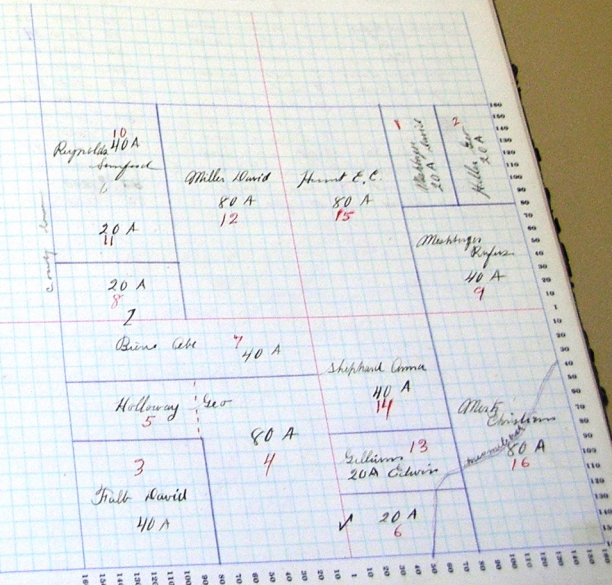
Assessor's Plat-Book for

NAMES OF OWNERS.	Section	DESCRIPTION.	Acres.	Value of Land.	Value of Improvements.	Value of Land and Improvements.
			9 25 13	20		600
Washburne David	1	s/2 n/e n/e		20		630
Keller Geo	2	s/2 n/e n/e		40	1300	220
Patt David	3	sw s/w		60		
Kellaway Geo W	4	pt se sw		20	2800	520
" " "	5	s/2 n/2 sw		20	700	
" " "	6	s/2 sw se		40	1380	480
Bemis Abraham	7	n/2 n/2 sw		20	680	
" " "	8	s20A s/2 n/w		40	1420	
Washburne Rufus	9	se n/e		40	1440	490
Kayshole Sanford	10	n/w n/w		20	700	
" " "	11	n/2 s/w n/w		80	2900	300
Miller David	12	s/2 n/w		20	720	90
Gilbertson Edwin P	13	n/2 s/w se		40	1460	460
Shepherd Anna	14	n/w s/e		80	2940	440
Spunt C C	15	w/2 n/d		80	2680	500
Walt Christian	16	s/2 se				

SECTION No. 7

Congressional Township No. 25, R. 13

SCALE: Forty rods to an inch, or ten rods to a space, Congress Land, which is one mile square for a section  
Number of acres in this section, according to the United States Survey, 640



Adams

Township, No.

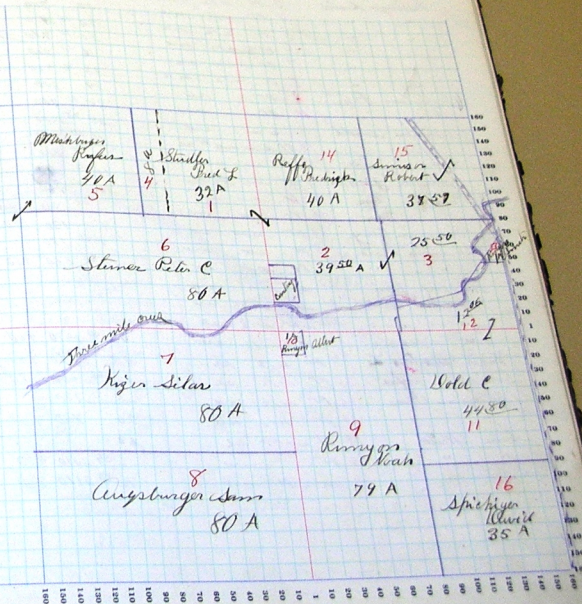
Assessor's Plat-Book for

Hardford

NAMES OF OWNERS.	Number of Plots.	DESCRIPTION.	Section.	Township.	Range.	Acres.	Blanchville.	Value of Lands.	Value of Improvements.	Value of Lands and Improvements.
Studler Fred F.	1	pt ne nw	10	25	13	32		1090	620	
"	2	sw ne	"	"	"	39.50		1160	340	
"	3	pt se ne	"	"	"	25.80		780		
"	4	pt ne nw	"	"	"	8		250		
"	5	nw nw	"	"	"	40		1400	50	
Muehlberger Rufus	6	s 1/2 nw	"	"	"	80		2640	340	
Starnes Peter C	7	n 1/2 sw	"	"	"	80		2800	600	
Kizer Silas	8	s 1/2 sw	"	"	"	80		2480	580	
Langsberger Sam	9	w 1/2 se	"	"	"	79		2370	260	
Rumy on Noah	10	pt w 1/2 se	"	"	"	1		40	70	
" Albert	11	pt e 1/2 se	"	"	"	44.80		1420	480	
Hold C	12	pt se ne	"	"	"	12.06		310		
"	13	pt se ne	"	"	"	1		30	80	
Amison Smith	14	nw ne	"	"	"	40		1320	380	
Keffe Friedrich	15	ne ne	"	"	"	33.59		1240		
Amison Robert	15	ne ne	"	"	"	35		1120		
Spitziger David	16	pt e 1/2 se	"	"	"					

## SECTION No. 10

Congressional Township No. 25 . R. 13

SCALE: Forty rods to an inch, or ten rods to a space, Congress Land, which is one mile square for a section  
Number of acres in this section, according to the United States Survey. 635 <sup>00</sup>

Adams

Assessor's Plat-Book for

Hartford

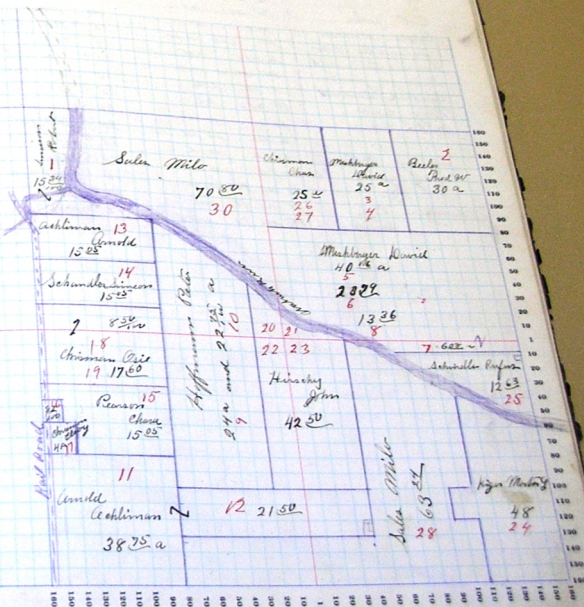
Township, No.

NAME OF OWNER.	Number of Pts.	DESCRIPTION.	Acres	Value of Land.	Value of Improvements.	Value of Land and Improvements.
Swinson Robert	1	pt new new	11 25 23	10 37		440
Parlier Paul W	2	pt n/2 ne		30		1620
Washington David	3	pt n/2 ne		5		170
"	4	pt n/2 ne		20		700
"	5	pt s/2 ne		40	16	1400
"	6	pt s/2 ne		20 74		710 200
"	7	pt s/2 ne		6 08		210
"	8	pt s/2 ne		13 36	460	200
Hoffmann Peter	9	pt sw		24		800
"	10	pt nw		22 75		760
Adkinson Arnold	11	sw sw		38 75		1200
"	12	pt sw and pt se		21 50		670
"	13	pt sw new		15 05		510
Schmidt Simon	14	pt sw new		15 05		510
Parson Clara	15	pt nw sw		15 05		460
" John	16	pt nw sw		32		50 120
Striman Gray	17	pt nw sw		4		130 20
Christman Ose	18	pt sw new		8 00		270
"	19	pt sw sw		17 62		560 150
Hirsty John	20	se con new				
" " " "	21	sw con ne				
" " " "	22	w pt w/2 sw				
" " " "	23	pt s/2 sw		42 50		1470 400
Higin Maters L	24	pt s/2 se		48		1560 150
Schindler Rufus	25	pt n/2 se		12 63		400 70
Chamman Chas	26	pt n/2 ne		5		170
"	27	pt n/2 ne		20		700 100
Sale Milo	28	pt sw pt se		63 24		
"	29	pt sw		54	2010	400
"	30	n e pt nw		70 80	2110	380

SECTION No. 11

Congressional Township No. 25 R. 13

SCALE: Forty rods to an inch, or ten rods to a space, Congress Land, which is one mile square for a section  
 Number of acres in this section, according to the United States Survey. 511  $\frac{27}{100}$





Cedars  
 COUNTY, INDIANA, 1911

Assessor's Plat-Book for

Township, No.

*Starfield*

NAME OF OWNER.	Number of Plots	DESCRIPTION.	Acres.	Value of Land.	Value of Improvements.	Value of Land and Improvements.
Egby Abraham	1	se 1/4 of 1/2	1 07	90		
"	2	1/2 for. sec 22	7 5			
"	3	pt se se	28 10	1000	70	
C C Yoder	4	ne se	40	800	5 50	
Bisler Abraham	4	ne se	56 25	1900	250	
Schmidler John	5	pt 1/2 nw	36	1300		
Hammer Edmund	6	sw pt sw	22 60	760	500	
Wahlenger Jacob	7	pt nw nw	40	1400	150	
Schubert Samuel	8	nw se	35 78	1170	170	
Pliny Jacob	9	pt 1/2 se	40			
Martin Chas	10	ne nw	40	2320	350	
"	11	se nw	78 87	1660	330	
Stuckey Peter	12	1/2 ne	78 87	1830		
Kornegy Alfred	13	1/2 ne	10	360	700	
"	14	pt ne pt sw	42	1510		
Lehmann C. J.	15	pt ne pt sw	43	1530		
" Sarah	16	pt ne pt sw				

## SECTION No. 12

Congressional Township No. 25<sup>th</sup>, R. 13SCALE: Forty rods to an inch, or ten rods to a space, Congress Land, which is one mile square for a section  
Number of acres in this section, according to the United States Survey. 592 <sup>1/2</sup> ~~1/2~~  
377 <sup>1/2</sup> ~~1/2~~