

Adams

Assessor's Plat-Book for

Hartford

Township, No.

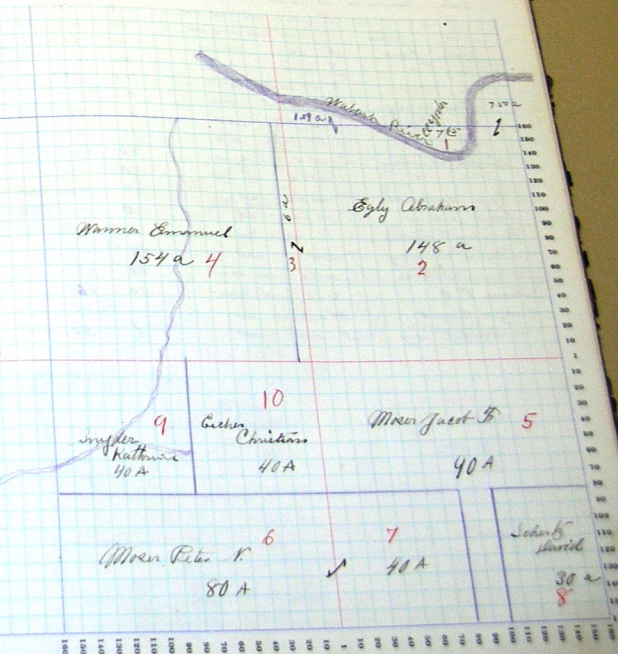
Map of Adams County, Ind., 1911

NAMES OF OWNERS.	Number on Plat.	DESCRIPTION.	Section.	Township.	Range.	Acres.	Municipality.	Value of Lands.	Value of Improvements.	Value of Lands and Improvements.
C C Zoder	1	n f. 12. pt. sec	12	25	13	7	65	240		
Egby Abraham	2	m. e.				148		4600	620	
" "	3	e. side m. w.				6		190		
Hamer Emanuel	4	m. w.				154		4930	800	
Mason Jacob F	5	n. 1/2 sec pt. sec. e.				90		2990	580	
" Peter N	6	s. 1/2 s. w.				80		2620	600	
" " "	7	s. w. s. e.				40		1280		
Schutz David	8	pt. sec. e.				30		1010		
Snyder Katherine	9	m. w. s. w.				40		1160	520	
Creech Christian	10	m. e. s. w.				40		1160		

SECTION No. 13

Congressional Township No. 25, R. 13

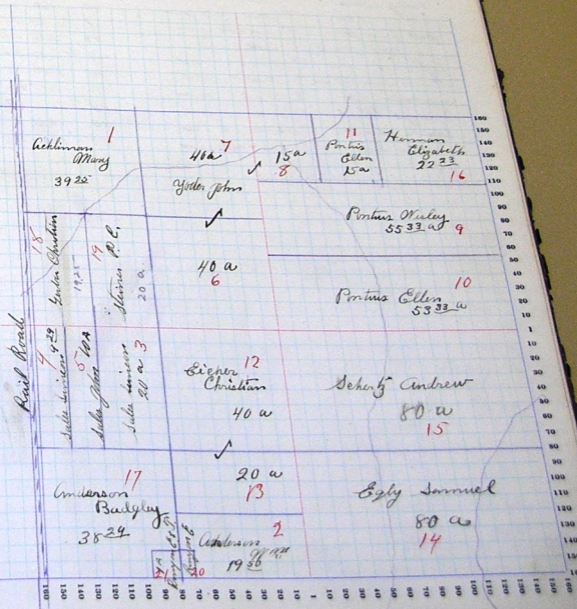
SCALE: Forty rods to an inch, or ten rods to a space, Congress Land, which is one mile square for a section
 Number of acres in this section, according to the United States Survey, 635 $\frac{48}{100}$



SECTION No. 14

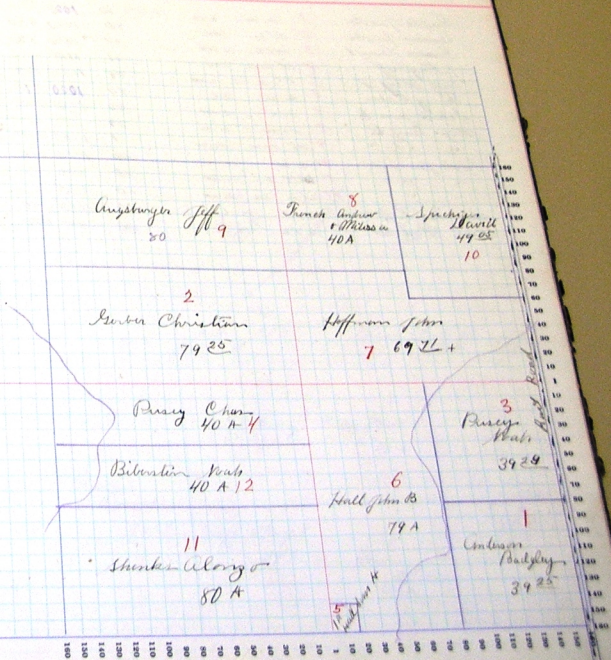
Congressional Township No. 25, R. 13

SCALE: Forty rods to an inch, or ten rods to a space, Congress Land, which is one mile square for a section
 Number of acres in this section, according to the United States Survey, 637 ³/₁₀₀



SECTION No. 15

Congressional Township No. 26, R. 13

SCALE: Forty rods to an inch, or ten rods to a space. Congress Land, which is one mile square for a section.
Number of acres in this section, according to the United States Survey. 636 7/10

SECTION No. 16

Congressional Township No. 24, R. 13

SCALE: Forty rods to an inch, or ten rods to a space, Congress Land, which is one mile square for a section
Number of acres in this section, according to the United States Survey. 628 1/2