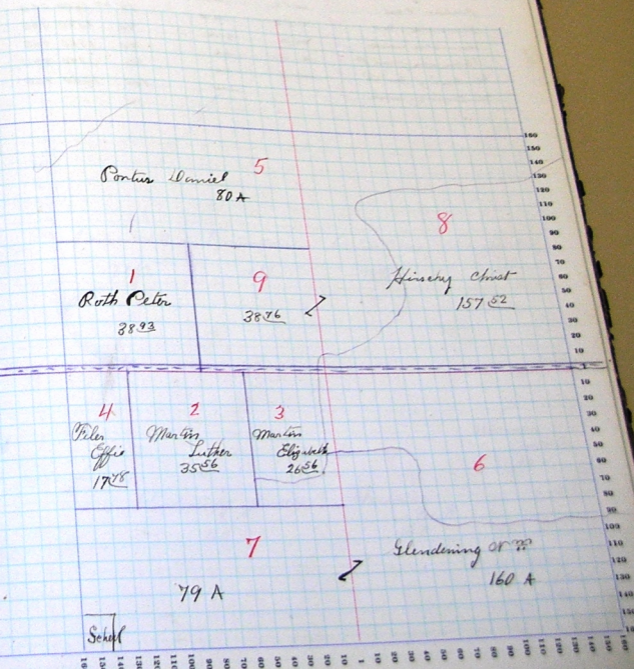




SECTION No. 26

Congressional Township No. 25, R. 13

SCALE: Forty rods to an inch, or ten rods to a space, Congress Land, which is one mile square for a section  
Number of acres in this section, according to the United States Survey. 634  $\frac{11}{100}$



# COUNTY, INDIANA, 1911

*Adams*

Township, No. \_\_\_\_\_

Assessor's Plat-Book for

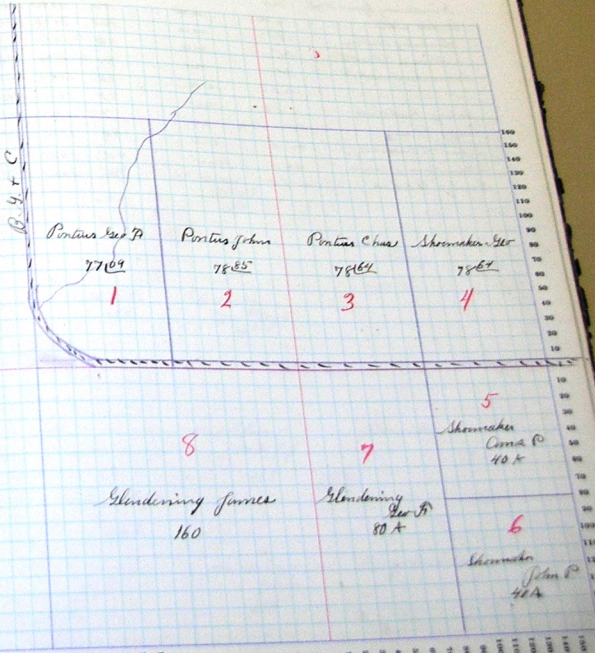
*Hartford*

NAMES OF OWNERS.	Number on Plat.	DESCRIPTION.	Section.	Township.	Range.	Acres.	Marketable.	Value of Land.	Value of Improvements.	Value of Land and Improvements.
			26	25	12	77	09	2480	600	
<i>Pontius Geo R</i>	<i>1</i>	<i>w 12</i>	<i>n w</i>					<i>78 85 2600</i>	<i>720</i>	
<i>Pontius John</i>	<i>2</i>	<i>e 12</i>	<i>n w</i>					<i>78 65 2600</i>	<i>720</i>	
<i>Pontius Chas</i>	<i>3</i>	<i>w 12</i>	<i>n e</i>					<i>78 67 2600</i>	<i>260</i>	
<i>Shrouder Geo</i>	<i>4</i>	<i>e 12</i>	<i>n e</i>					<i>40 1340</i>	<i>360</i>	
<i>Shrouder Amos</i>	<i>5</i>	<i>n e</i>	<i>s e</i>					<i>40 1360</i>	<i>400</i>	
<i>Shrouder John P</i>	<i>6</i>	<i>s e</i>	<i>e e</i>					<i>80 2740</i>	<i>940</i>	
<i>Shrouder Geo R</i>	<i>7</i>	<i>w 12</i>	<i>s e</i>					<i>160 6530</i>	<i>950</i>	
<i>Shrouder James</i>	<i>8</i>		<i>s w</i>							

SECTION No. 26

Congressional Township No. 25, R. 12

SCALE: Forty rods to an inch, or ten rods to a space, Congress Land, which is 360 acre square for a section  
 Number of acres in this section, according to the United States Survey, 633<sup>33</sup>/<sub>100</sub>

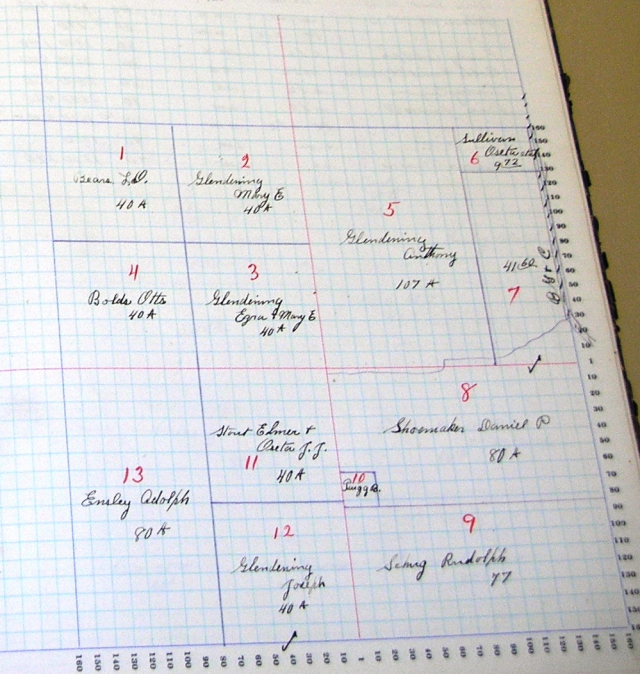




SECTION No. 27

Congressional Township No. 25, R. 13

SCALE: Forty rods to an inch, or ten rods to a space, Congress Land, which is one mile square for a section  
 Number of acres in this section, according to the United States Survey, 638  $\frac{1}{2}$   $\frac{1}{2}$



1  
Oceana L.L.  
40 A

2  
Glendening  
May E  
40 A

Sullivan  
6  
& Co.  
972

5  
Glendening  
Anthony  
107 A

4  
Boldt Otto  
40 A

3  
Glendening  
Egra & May E  
40 A

4160  
7

13  
Emley Adolph  
80 A

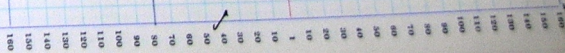
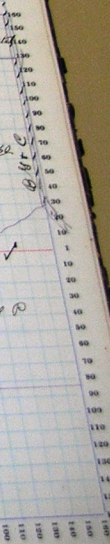
11  
Stout Edmer &  
Carter J. J.  
40 A

8  
Shoemaker Daniel P  
80 A

10  
Suggs

12  
Glendening  
Joeth  
40 A

9  
Schuy Rudolf  
77





## SECTION No. 28

Congressional Township No. 25, R. 13

DALE: Forty rods to an inch, or ten rods to a space, Congress Land, which is one mile square for a section  
 Number of acres in this section, according to the United States Survey, 640 <sup>36</sup>/<sub>100</sub>

