

Adams

Township, No.

Assessor's Plat-Book for *Hartsville*

W. B. FOSTER, COUNTY CLERK, INDIANAPOLIS

NAMES OF OWNERS.

Number on Plat.

DESCRIPTION.

Section.

Township.

Range.

Acres.

Market Value of Land.

Value of Improvements.

Value of Land and Improvements.

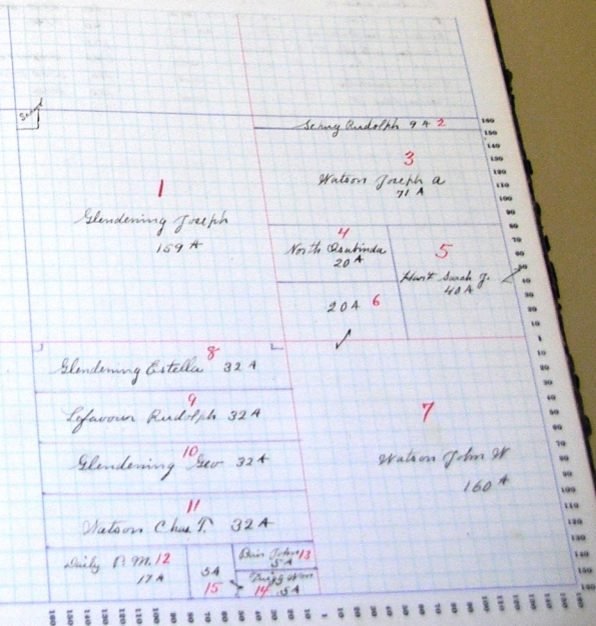
Value of Land and Improvements.

NAMES OF OWNERS.	Number on Plat.	DESCRIPTION.	Section.	Township.	Range.	Acres.	Market Value of Land.	Value of Improvements.	Value of Land and Improvements.
	1		nw	34	15	13	159	5520	880
Blendenburg Joseph	2	n side n/2 ne				9	340		
Schuyler Rudolph	3	n/2 ne				71	2420	490	
Watson Joseph	4	n/2 sw se				20	650	140	
Webb Esabinda	5	se ne				40	1370	260	
Hart Sarah J.	6	s/2 sw ne				20	680		
Watson John W.	7	se				160	5640	1080	
" "	8	pt n/2 sw				32	1050	300	
Blendenburg Estelle	9	pt n/2 sw				32	1090		
Lufavour Rudolph	10	Smith pt sw				32	1090		
Blendenburg Geo	11	pt s/2 sw				32	1090	430	
Watson Chas D.	12	pt s/2 sw				17	580		
Daily P. M.	13	pt s/2 sw				5	170	180	
Bain John	14	pt s/2 sw				5	170	50	
Dwight W. H.	15	pt s/2 sw				5	160		

SECTION No. 34

Congressional Township No. 25, R. 13

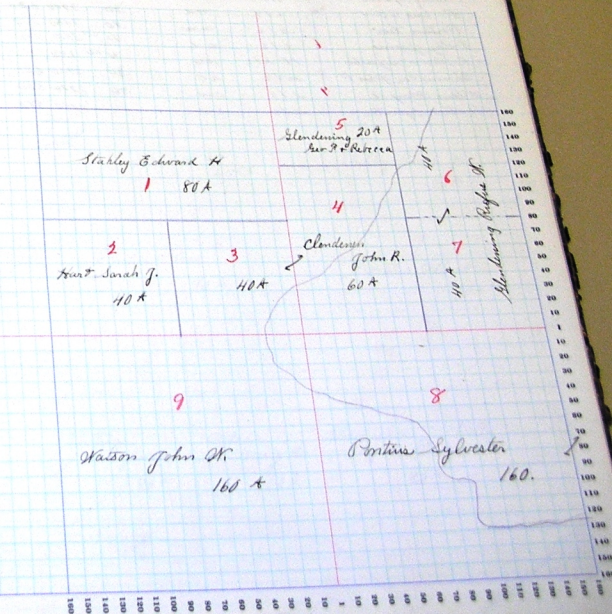
SCALE: Forty rods to an inch, or ten rods to a space, Congress Land, which is one mile square for a section.
 Number of acres in this section, according to the United States Survey, 624



SECTION No. 35

Congressional Township No. 25, R. 13

SCALE: Forty rods to an inch, or ten rods to a space, Congress Land, which is one mile square for a section.
 Number of acres in this section, according to the United States Survey. 640



1 80A
 Stahley Edward H.

2 40A
 Hart Sarah J.

3 40A
 Clendenen John R.

5 20A
 Glendening Rebecca

7 40A
 Glendening Rufus J.

9 160A
 Watson John H.

8 160A
 Pontius Sylvester

COUNTY, INDIANA, 1911

Adams

Township, No.

Assessor's Plot-Book for *1911*

NAME OF OWNER	Number of Acres	DESCRIPTION	Acres	Value of Land	Value of Improvements	
	1	1/2 ac	34 25 43	5 70	210	180
Stall - General	2	1/2 ac		64 25	2160	670
Stall 18 20	3	1/2 ac		80	2720	800
Whisky Dist	4	1/2 ac		80	2770	620
Parkus letter	5	1/2 ac		90	3060	350
Parkus Lee	6	1/2 ac		75 50	2640	280
Polly Jones	7	1/2 ac		4 60	140	
Robertson Ingalls	8	1/2 ac		80	2720	620
Shannon John P	9	1/2 ac		80	2720	580
Wilson May &	10	1/2 ac		80	2730	480
Parkus Sylvester						

SECTION No. 36

Congressional Township No. 25, R. 13

SCALE: Forty rods to an inch, or ten rods to a space, Congress Land, which is one mile square for a section. Number of acres in this section, according to the United States Survey. 640

Stahl
Summit
625

2
Stahl W^{ms}
6425

3
Stahley Jacob J.
80*

5
Pontius Levi
90*

4
Pontius Albert
80*

10
Pontius
Lyvester
81*

9
Wilson
Mary A.
81*

8
Shoemaker
John P.
87*

6
Polly Jennie
75.50

150 140 130 120 110 100 90 80 70 60 50 40 30 20 10 1 10 20 30 40 50 60 70 80 90 100 110 120 130 140 150

7
K...
...