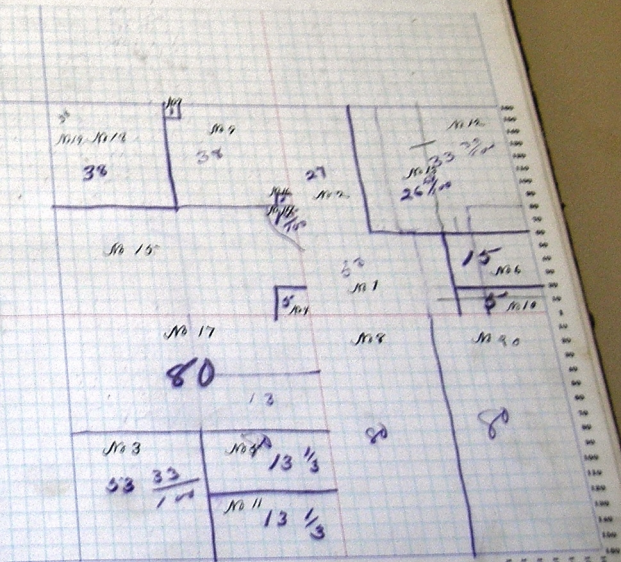




## SECTION No. 7

Congressional Township No. 2, R. 16

SCALE: Forty rods to an inch; or ten rods to a space, Congress Land, which is one mile square for a section.  
Number of acres in this section, according to the United States Survey.

Adams

Assessor's Plat-Book for

Jefferson

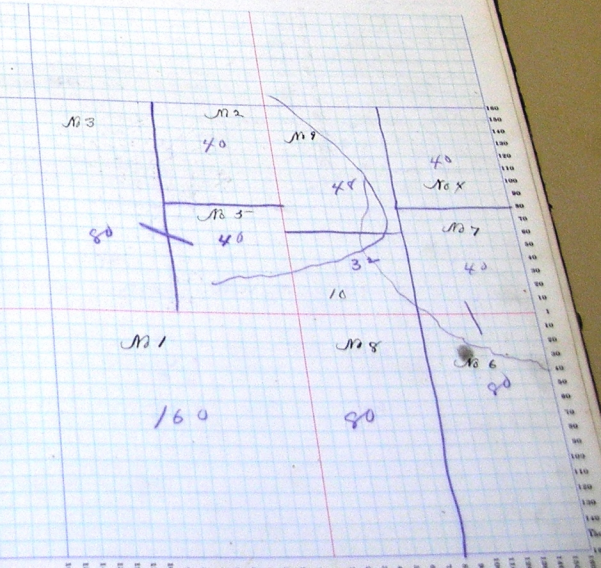
Township, No. 25

NAMES OF OWNERS.	Number of Pcs.	DESCRIPTION.	Acres.	Taxes.	Imps.	Assess.	Value of Land.	Value of Improvements.	Value of Land and Improvements.
1	1	Sec 14	5 25 15	100			5210	680	5860
2	2	20				40	1300	300	1600
3	3	10 1/2				80	2770	500	3270
4	4	20				40	1800	450	1750
5	5	Sec				40	1300		1300
6	6	20				80	2420	400	3020
7	7	Sec				40	1300		1300
8	8	20 1/2				80	2570		2570
9	9	20 1/2 20 1/2				48	1680	300	1980
10	10	20 Sec				32	1040		1040

SECTION No. 8

Congressional Township No. 40. R. 15

SCALE: Forty rods to an inch, or ten rods to a space, Congress Land, which is one mile square for a section  
 Number of acres in this section, according to the United States Survey.



Adams

Assessor's Plat-Book for

Jefferson

Township, No. 25-

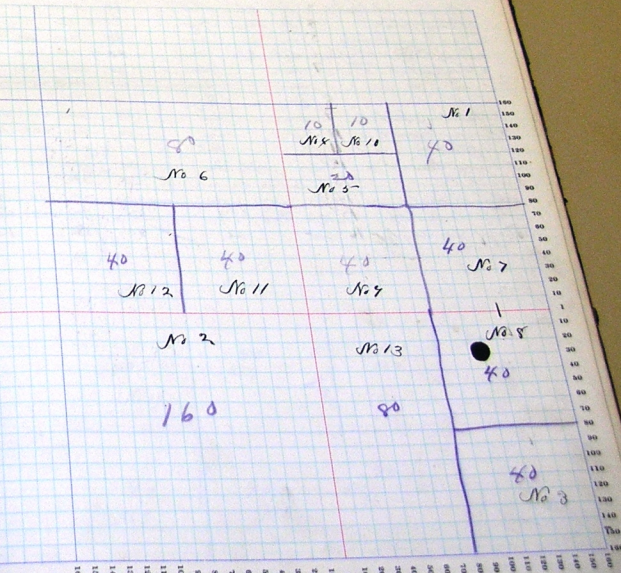
NAME OF OWNERS.	Block or Plat	DESCRIPTION.	Acres.	Value of Land.	Value of Improvements.	Value of Land and Improvements.
Baker W. C.	1	W/2 E/2	40	1340	400	1740
Bryson C. J.	2	Sec.	160	5340	600	6140
Burbower Theo. C.	3	Se/2	40	1420	150	1570
Wall Samuel D.	4	(P) NW/2	10	340	50	390
Wall Box Anna	5	Se/2 NW/2	20	640	180	820
Lewis ex. Susan M.	6	W/2	80	2470	400	3170
Leedy Wilson Chas.	7	Se/2	40	1350	450	1800
York John C.	8	W/2	40	1320	600	1820
Ray Martin	9	Sw/2	40	1390		1390
Smitley Chas. T.	10	NE NW/2	10	340		340
John David	11	Se/2	40	1380	450	1830
John Zeller	12	Sw/2	40	1520		1520
Bruner Frank Z.	13	Sw/2	80	2770	300	3070

640 21970 3430 257420



## SECTION No. 9

Congressional Township No. 8, R. 15-

SCALE: Forty rods to an inch, or ten rods to a space, Congress Land, which is one mile square for a section  
Number of acres in this section, according to the United States Survey.

Adams

Township, No. 25-

Assessor's Plat-Book for

Jefferson

NAMES OF OWNERS.	Section	Description	Acres	Value of Land	Value of Improvements	Value of Land and Improvements
1. Robert Usher	1	Se	40	1300	300	1640
2. Robert W. W. W. W.	2	Sw	35	1140	350	1490
3. Robert W. W. W.	3	Sp	69	2210	400	2610
4. Class John	4	Se	40	1350	150	1500
5. " "	5	sw	55	1180	150	1330
6. Duff Clay M. Bertha	6	Se	40	1210	200	1410
7. " "	7	sw	40	1220	450	1670
8. " "	8	Sp. sw.	5	160		160
9. " "	9	Sw	40	1220	450	1670
10. " "	10	Sw	60	1420	200	1620
11. " "	11	Sp	70	2250	500	2750
12. " "	12	Sp 1/2	30	1020	100	1120
13. " "	13	Sw. Cor. Sp 1/2	10	350		350
14. " "	14	Sw. Cor. Sp 1/2	40	1380	200	1580
15. " "	15	Sp 1/2	80	2880	250	3130
16. " "	16	sw	40	1380		1380

## SECTION No. 10

Congressional Township No. 8, R. 10-

SCALE: Forty rods to an inch, or ten rods to a space, Congress Land, which is one mile square for a section  
Number of acres in this section, according to the United States Survey.