

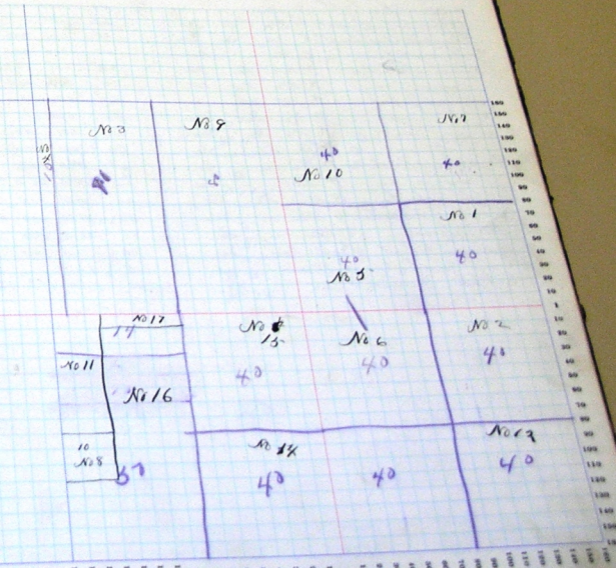
Assessor's Plat-Book for *Jefferson*

NAME OF OWNER.	Number of Pts.	DESCRIPTION.	Acres.	Value of Land.	Value of Improvements.	Value of Land and Improvements.	
✓ Buckmaster Wm. A.	1	1/2 Se ne	40	1020	50	1070	
✓ Brewster Sophia	3	ne	40	1180		1180	
✓ Bucher John	3	W/2	70	2440	300		
" "	4	1/4 W/2	10	300			
" "	4	1/4 ne	40	1350	300	3070	
✓ Buckmaster Vance	5	Sw	40	1350			
" "	6	nw	40	1350	300	3200	
" "	7	ne	40	1350	300	1850	
✓ Buckmaster J. E. H.	8	nw Sw	10	300		300	
✓ Beare W. M. H.	9	ne	80	2770	300	3070	
✓ Caspell Sarah	9	E/2	40	1370	100	1470	
✓ Charleston Homer	10	W	14	380		380	
✓ Derickson Robert E.	11	1/4 pt W/2	Sw	40	860	350	1210
✓ Kelly Wm. J.	12	Se	Sw	40	860		860
✓ McCallum E. D.	13	1/2 Sw 1/4	Sw	40	1020		1020
✓ McCallum L. B.	14	Se	Sw	40	7200	300	7500
✓ Reynolds Lewis	15	1/4 1/4	Sw	50	1490	150	1640
✓ Peeples Isaac	16	1/4 1/2	Sw	6	150		150
✓ Taylor John C.	17	1/4 pt 1/2	Sw				

SECTION No. 14

Congressional Township No. 8, R. 16

SCALE: Forty rods to an inch, or ten rods to a space, Congress Land, which is one mile square for a section  
Number of acres in this section, according to the United States Survey.



Adams

Township, No. 3-5-

Assessor's Plat-Book for

Jefferson

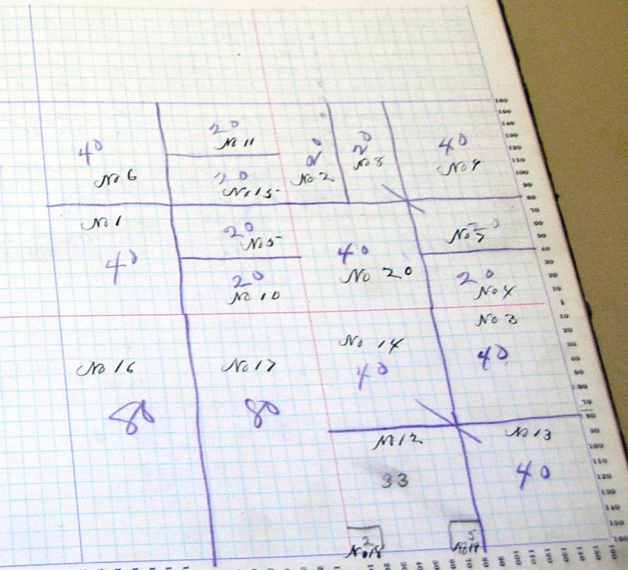
NAMES OF OWNERS	Number of Acs.	DESCRIPTION.	North	Traverse	Range	Acres	Value of Land.	Value of Improvements	Value of Total Plat
Langdon, Frank	1	Sw	Sw	Sw	20	20	1100	450	1610
Beland, George	2	W/2	Sw	Sw	40	72	200	920	920
Beck, Elmer	3	W/2	Se	Ne	20	670	400	1700	640
Chas. C. Conner	4	S/2	Se	Sw	20	690	350	1040	1040
Quinn, Angeline	5	W/2	Sw	Sw	40	1360	800	1660	1660
Forsyth, John	6	Sw	Sw	Sw	20	650	150	1490	1490
Quinn, Philip	7	W/2	Se	Sw	20	690	150	1490	1490
" "	8	S/2	Sw	Sw	40	1350	300	1650	1650
" "	9	W/2	Sw	Sw	20	690	150	1490	1490
Quinn, John	10	S/2	Se	Sw	20	680	200	1080	1080
" "	11	W/2	Sw	Sw	33	1090	300	1480	1480
" "	12	S/2	Sw	Sw	40	1170	50	1220	1220
Ketchum, Marion	13	Se	Sw	Sw	40	1380	200	1580	1580
" "	14	Sw	Sw	Sw	20	710	150	860	860
" "	15	S/2	Sw	Sw	80	2130	600	2730	2730
Sullivan, John	16	W/2	Sw	Sw	80	2610	500	3110	3110
Leech, Martin	17	S/2	Sw	Sw	12	70	100	170	170
Huber, Jacob	18	Sw	Sw	Sw	5	160	100	160	160
Grancy, P. Floyd	19	Sw	Sw	Sw	40	1380	100	1480	1480
Engle, George H.	20	Sw	Sw	Sw	40	1380	100	1480	1480
Ketchum, Zachariah	20	Sw	Sw	Sw	40	1380	100	1480	1480

640 2080 7500 20210

## SECTION No. 20

Congressional Township No. 8, R. 16

SCALE: Forty rods to an inch, or ten rods to a cent. Congress Land, which is one mile square for a section.  
 Number of acres in this section, according to the United States Survey.



Assessor's Plat-Book for

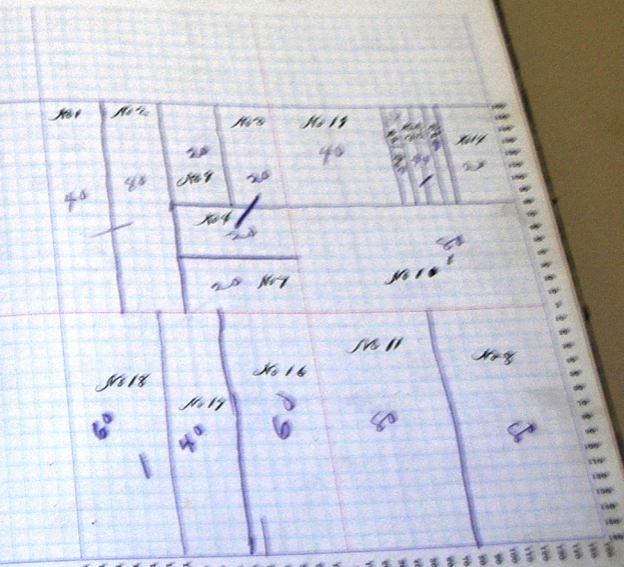
Jefferson

NAME OF OWNER	DESCRIPTION	ACRES	VAL	TAX	RENT	TOTAL
1	W/2 W/2	20	1400	500		
2	E/2 W/2	20	1020			2270
3	W/2 W/2	20	700	100		
4	W/2 W/2	20	100			1540
5	W/2 W/2	20	850	100		1000
6	W/2 W/2	20	700	100		800
7	W/2 W/2	20	3000			2400
8	W/2 W/2	20	700	20		720
9	W/2 W/2	20	2750	600		3350
10	W/2 W/2	20	3220	600		3820
11	W/2 W/2	4	140	30		
12	W/2 W/2	4	130			310
13	W/2 W/2	20	630	500		230
14	W/2 W/2	4	130			130
15	W/2 W/2	60	1560	400		1960
16	W/2 W/2	40	1840			
17	W/2 W/2	60	1660	300		2960
18	W/2 W/2	40	1420	400		1820
19	W/2 W/2					

SECTION No. 1

Congressional Township No. 4, R. 16

SCALE: Every inch on this map is equal to one mile on a square section of land, which is one mile square or a square of 3600 acres in total area, according to the United States Survey.



Assessor's Plat-Book for

Jefferson

Vol. 1000

NAMES OF OWNERS.	ACRES	DESCRIPTION.	Section	Township	Range	Acres	Value of Land.	Value of Improvements.	Value of Land and Improvements.
			Se	23	25	15	14		460
Polanbaugh Jacob S.	1	1/2 E 1/2	Sw			4			120
" "	2	1/2 Sw	Sw			20			660
" "	3	1/2 W	Sw			10			330
" "	4	1/2 E	Sw			74	460	400	1570
Polanbaugh W. & Co.	5	1/2 E 1/2	Sw			20			660
" "	6	1/2 W	Sw			10			330
" "	7	1/2 E 1/2 W	Sw			20	640	300	1850
" "	8	1/2 W	Sw			13			430
Berger David	9	1/2 E	Sw			20	600	250	850
Cabel Fred	10	1/2 E	Sw			20	650	300	950
Dunn Chas.	11	1/2 E	Sw			20	650	350	1000
Fellers Chas. M.	12	1/2 W	Sw			20	560	200	760
Fellers Theodore	13	1/2 E	Sw			32	1025	300	
Fellers Lavinia C.	14	1/2 W	Sw			12			360
Hillier Jacob	15	1/2 E	Sw			40			1200
" "	16	1/2 W	Sw			5			250
" "	17	1/2 E	Sw			60	2060	500	3340
" "	18	1/2 W	Sw			20			600
Thuffman Geo. F.	19	1/2 E	Sw			20		200	620
Hillier Della	20	1/2 E	Sw			8			860
Konney James	21	1/2 W	Sw			32			1080
" "	22	1/2 E	Sw			40			1340
" "	23	1/2 W	Sw			21			680
Apelar Wm	24	1/2 E	Sw			19			570
Murphy Patrick	25	1/2 E	Sw			20	650	300	950
Spangler Frank	26	1/2 E	Sw			40			1310
Gandy Job L.	27	1/2 E	Sw			40			1310
" "									550
" "									3270

SECTION No. 22

Congressional Township No. 8 R. 16

SCALE: Forty rods to an inch, or ten rods to a space, Congress Land, which is one mile square for a section. Number of acres in this section, according to the United States Survey.

