

COUNTY, INDIANA, 189

Assessor's Plat-Book for

Highland

Township, No.

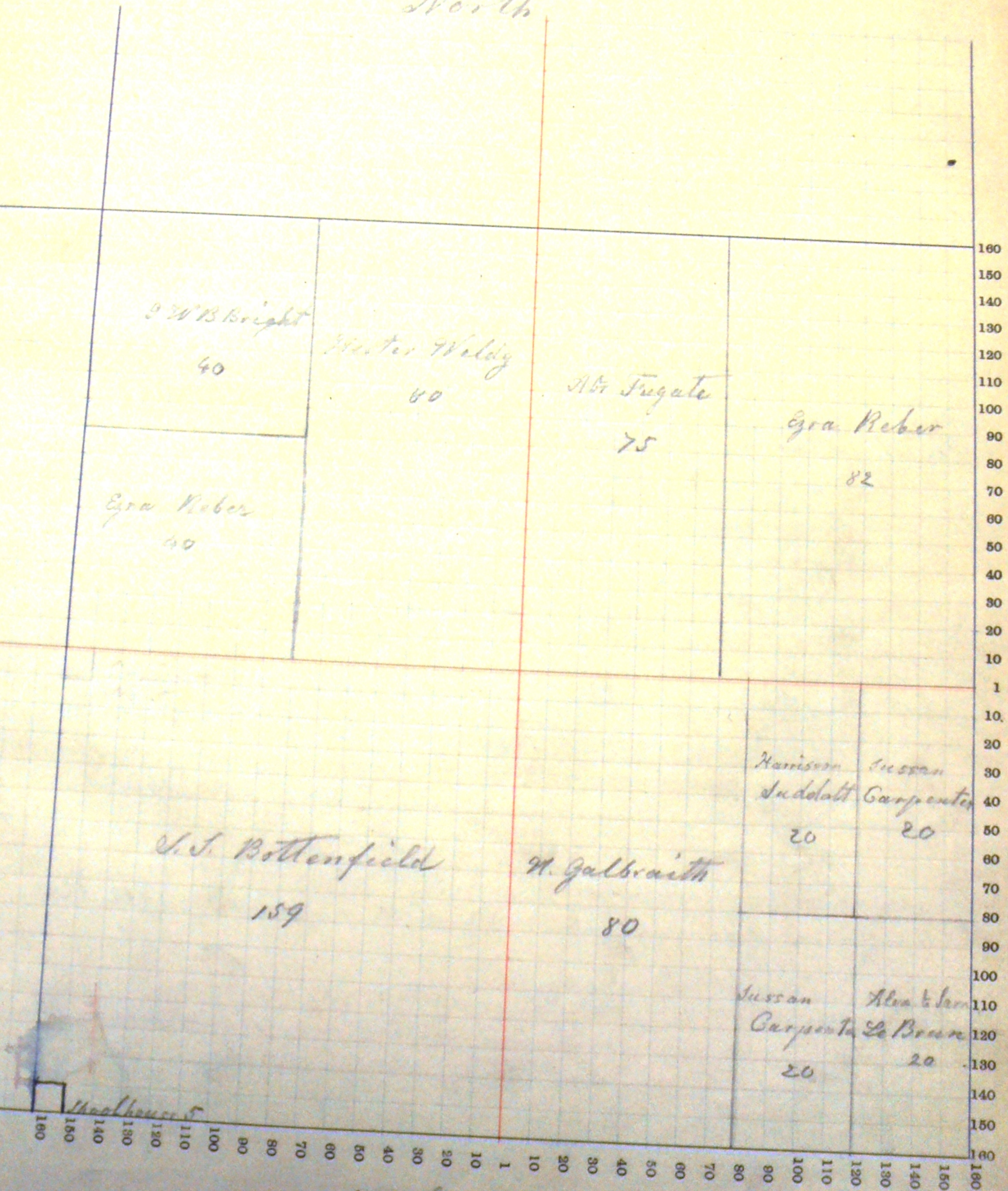
NAMES OF OWNERS.	Number on Plat.	DESCRIPTION.	Section.	Township.	Range.	Acres.	Hundredths.	Value of Lands.	Value of Improvements.	Value of Lands and Improvements.
<i>Weldy Dwyer</i>		<i>E/2 NW 25 27 13</i>				80		1600	300	1900
<i>Carpenter Susan</i>		<i>E NE SE</i>				20		370	85	
<i>" "</i>		<i>pt W/2 SE SE</i>				20		370	15	830
<i>Udolph Harrison</i>		<i>W/2 NE NE</i>				20		350	50	400
<i>Fugate Abr.</i>		<i>W/2 NE</i>				45		1500	400	1900
<i>Reber Ezra</i>		<i>pt NE NE</i>				42		1640	400	
<i>" "</i>		<i>E/2 W/2 NW</i>				40		800	120	2960
<i>Bright G. W. B.</i>		<i>W/2 W/2 NW 25 27 13</i>				40		800	250	1050
<i>LeBrun Alex & SE</i>		<i>pt E/2 SE SE</i>				20		350	150	500
<i>Galbraith Henry</i>		<i>W/2 SE</i>				80		1520	75	1795
<i>Bottenfield S. S.</i>										
								3610	1520	5130

SECTION No. 25.

Congressional Township No. 27, R. 13

Scale—Forty rods to an inch, or ten rods to a space, Congress Land, which is one mile square for a section.
Number of acres in this section, according to the United States Survey,

North



South

COUNTY, INDIANA, 189

Assessor's Plat-Book for Richland Township, No.

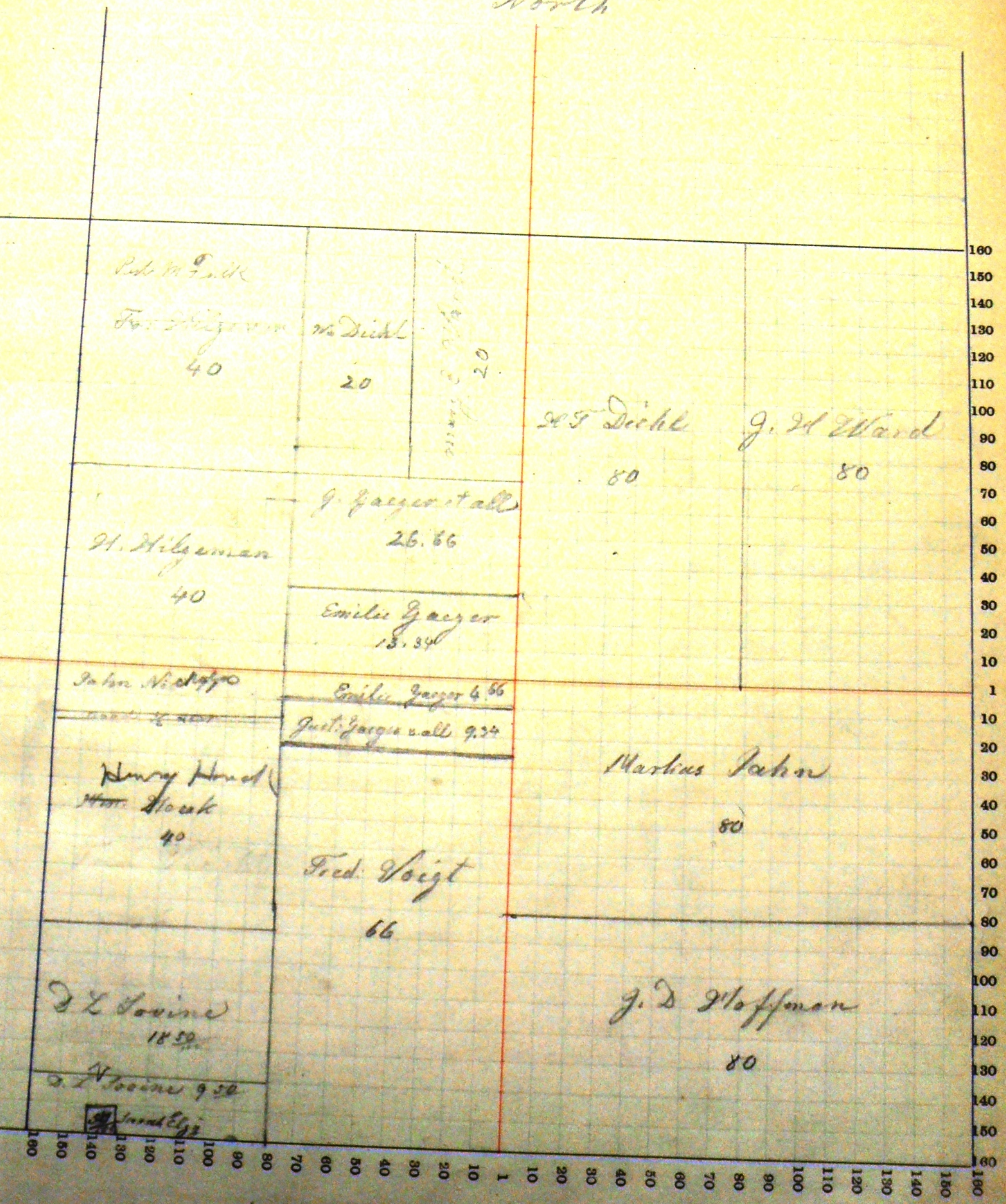
NAMES OF OWNERS.	Number on Plat.	DESCRIPTION.	Section.	Township.	Range.	Acres.	Hundredths.	Value of Lands.	Value of Improvements.	Value of Lands and Improvements.
Milgeman Fred		NW	NW	26	27	13	40	300	75	875
Milgeman Henry		SW	NW	.	.	.	40	500	600	1400
Diehl W. T.		W $\frac{1}{2}$	NE	.	.	.	80	1540	200	1740
Ward J. M.		E $\frac{1}{2}$	NE	.	.	.	80	1480	75	1555
Ward Mary E		E $\frac{1}{2}$ NE	SW	.	.	.	80	370	275	645
Howck Henry	pt	W $\frac{1}{2}$	SW	26	27	13	40	800	275	1075
Doovic D. L.	Spt	W $\frac{1}{2}$	SW	26	27	13	9 50	180	245	
"	pt	W $\frac{1}{2}$	SW	"	"	"	18 50	360	100	885
Jahn Nic.	Npt	W $\frac{1}{2}$	SW	26	"	"	11	210	50	260
Jahn Markus	N $\frac{1}{2}$	SE	SE	26	27	13	80	1600	700	2800
Moffman J. D.				26	27	13	80	1600	800	2400
Gaezer Emilie	Npt	SW	"	"	"	"	4 66	360	600	960
"	Npt	SW	"	"	"	"	13 34			
Gaezer Gustat all	Spt Npt	SW	"	"	"	"	9 34	720	200	920
"	SE	NW	"	"	"	"	26 66			
Voigt Fred.	Spt E $\frac{1}{2}$	SW	"	"	"	"	66	1320	420	1795
Elzey Sarah	pt	W $\frac{1}{2}$	SW	"	"	"	50	10	30	40

SECTION No. 26.

Congressional Township No. 27, R. 13

Scale—Forty rods to an inch, or ten rods to a space, Congress Land, which is one mile square for a section.
Number of acres in this section, according to the United States Survey,

North



South

COUNTY, INDIANA, 189

Assessor's Plat-Book for Rickland Township, No. _____

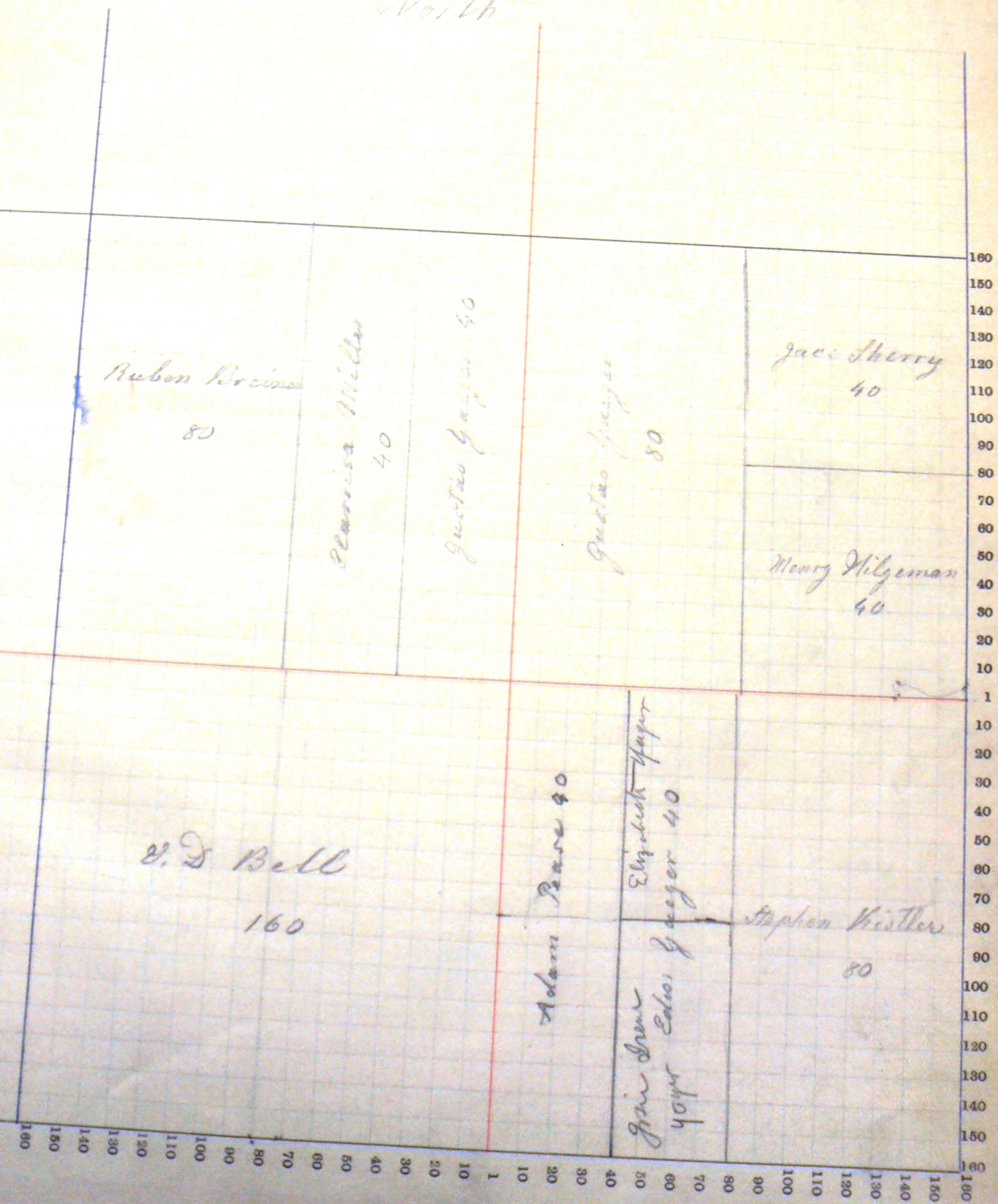
NAMES OF OWNERS.	Number on Plat.	DESCRIPTION.	Section.	Township.	Range.	Acres.	Hundredths.	Value of Lands.	Value of Improvements.	Value of Lands and Improvements.
Breiner Ruben	1/2		NW	27	27	13	80	1540	460	2000
Gaeger Gustav	1/2		NE	-	-	-	80	1560	640	
"	1/2	1/2	NW	-	-	-	40	780	130	3110
Miller Elarrisa	1/2	1/2	NW	-	-	-	40	770	270	1040
Wilgeman Henry		SE	NW	-	-	-	40	800	100	
Sherry Jacob		NE	NE	-	-	-	40	800	175	975
Bell V. D.			SW	-	-	-	160	3120	700	3820
Gaeger Edw.	1/2	1/2	SE	27	27	13	40	780	1200	1980
Pease Adam	1/2	1/2	SE	-	-	-	40	780	220	1000
Histler Stephen	1/2		SE	-	-	-	80	1560	450	2010

SECTION No. 27.

Congressional Township No. 27, R. 13

Scale—Forty rods to an inch, or ten rods to a space, Congress Land, which is one mile square for a section.
Number of acres in this section, according to the United States Survey,

North



COUNTY, INDIANA, 189

Assessor's Plat-Book for Wicklana Township, No. _____

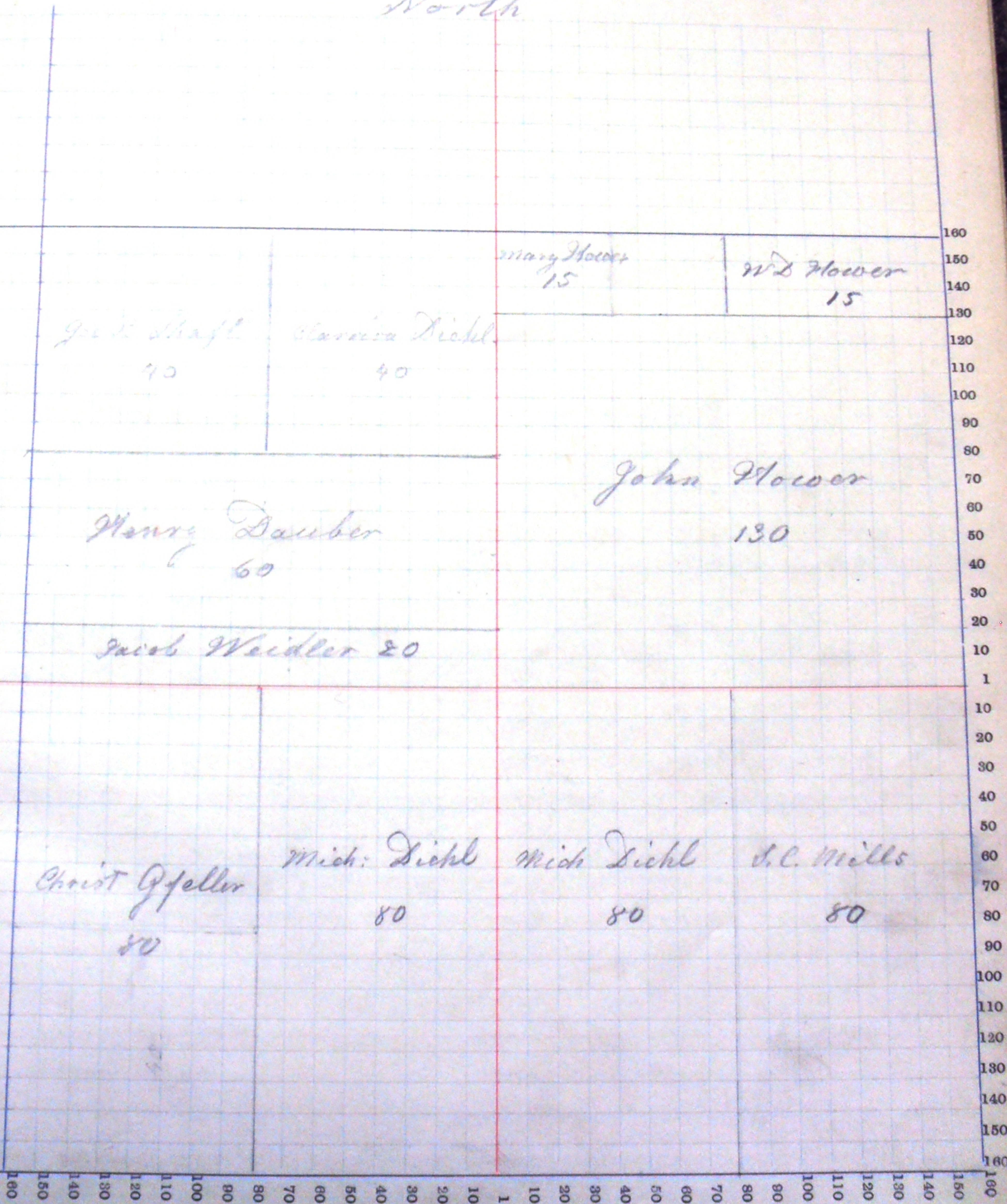
NAMES OF OWNERS.	Number on Plat.	DESCRIPTION.	Section.	Township.	Range.	Acres.	Hundredths.	Value of Lands.	Value of Improve-ments.	Value of Lands and Improve-ments.
Mills S. C.	E ₂	SE	28	27	13	80		1520	650	2170
Diehl Michael	E ₂	SW	-	-	-	80		1520	185	
"	W ₂	SE	"	"	"	80		1520	695	3920
Gfeller Christ:	W ₂	SW	"	"	"	80		1480	250	1730
Weidler Jac:	S ₂ S ₂ S ₂	NW	"	"	"	20		370	70	440
Dauber Henry	Npt S ₂	NW	"	"	"	60		1110	200	1310
Shaft Geo: P.	NW	NW	"	"	"	40		960	200	960
Diehl Clarisa	NE	NW	"	"	"	40		970	250	1020
Diehl Sam.	pt SE	SE	"	"	"	25		20	5	25
Mower Mary	Npt W ₂	NE	"	"	"	15		285	25	310
Mower Johnson	Spt	NE	"	"	"	130		2470	450	2920
Mower W.D.	Npt E ₂	NE	"	"	"	15		285	75	360

SECTION No. 28.

Congressional Township No. 27, R. 13

Scale—Forty rods to an inch, or ten rods to a space, Congress Land, which is one mile square for a section.
Number of acres in this section, according to the United States Survey,

North



South