

COUNTY, INDIANA, 189

Assessor's Plat-Book for

Highland

Township, No.

NAMES OF OWNERS.	Number on Plat.	DESCRIPTION.	Section.	Township.	Range.	Acres.	Hundredths.	Value of Lands.	Value of Improve-ments.	Value of Lands and Improve-ments.
Berger Nicolas		1st SW 9 27 13	9	27	13	120		2280		2280
Cochran J. R.		1st NW No. 9	9	-	-	320		5800	850	6650
Steele J. A.		1/2 SE 9	9	-	-	80		1520	750	2270
Berger William		1/2 SE 9	9	-	-	80		1500	725	
m		SE 9	9	-	-	80		750	25	3000

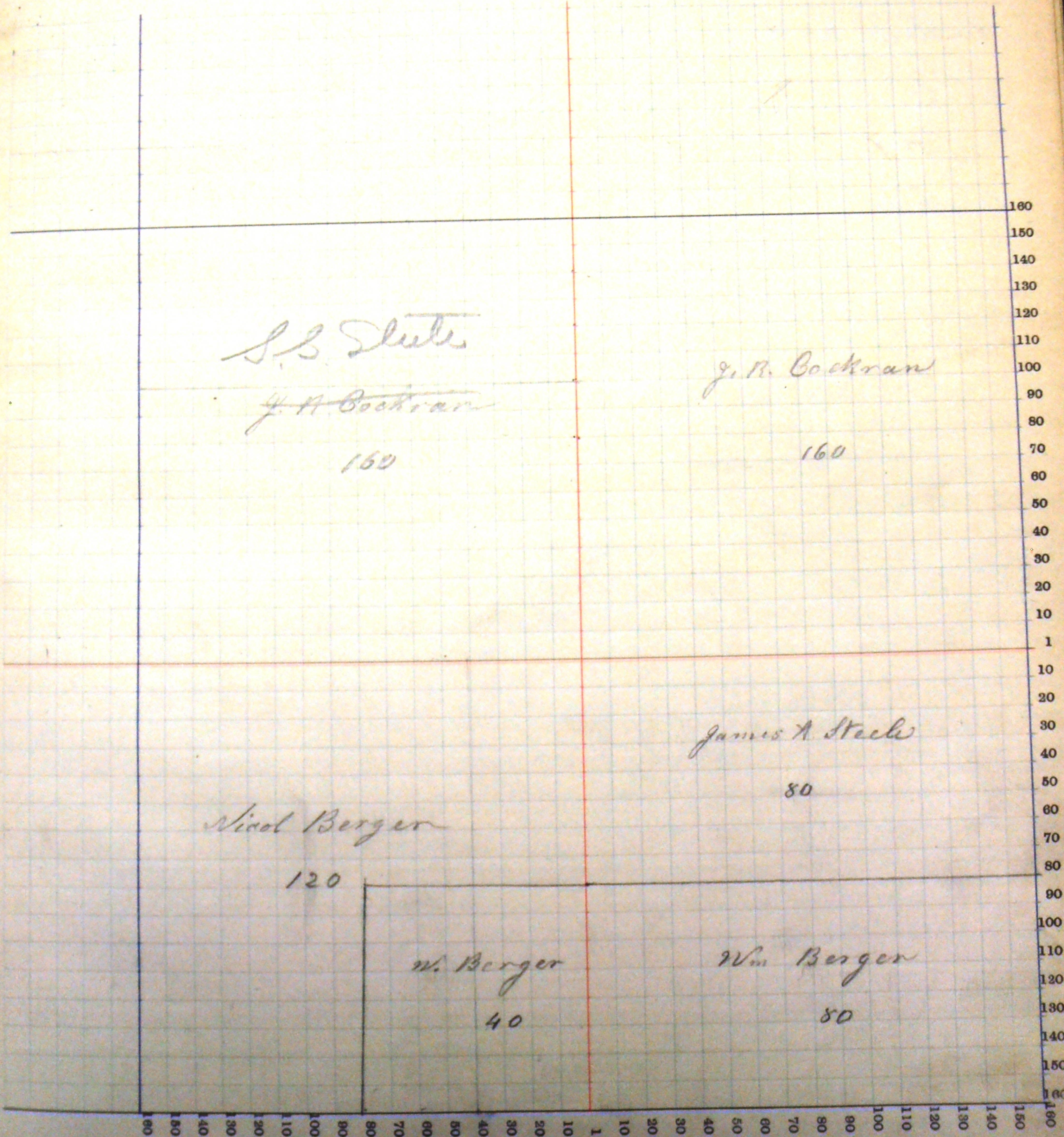
SECTION No. 9.

Congressional Township No. 27, R. 13

Scale—Forty rods to an inch, or ten rods to a space, Congress Land, which is one mile square for a section.
Number of acres in this section, according to the United States Survey,

North

West



S.B. Stute
J.A. Cochran
160

J.M. Cochran
160

James A. Steele
80

Nicol Berger
120

W. Berger
40

Wm Berger
80

South

COUNTY, INDIANA, 189

Assessor's Plat-Book for Highland

Township, No. _____

NAMES OF OWNERS.	Number on Plat.	DESCRIPTION.	Section.	Township.	Range.	Acres.	Hundredths.	Value of Lands.	Value of Improvements.	Value of Lands and Improvements.
Beineke W. F.		NW/2	1027	13		80		1500	400	1900
Wieblich Jam T		Wpt	06	-	-	55		1040	450	1490
Wieblich Robert		pt	1/2	-	-	257		5100	1300	6400
Dugdale Jam:		E/2	NW	-	-	80		1600		1600
Bower Jonathan			1027	13		160		3080	575	3655

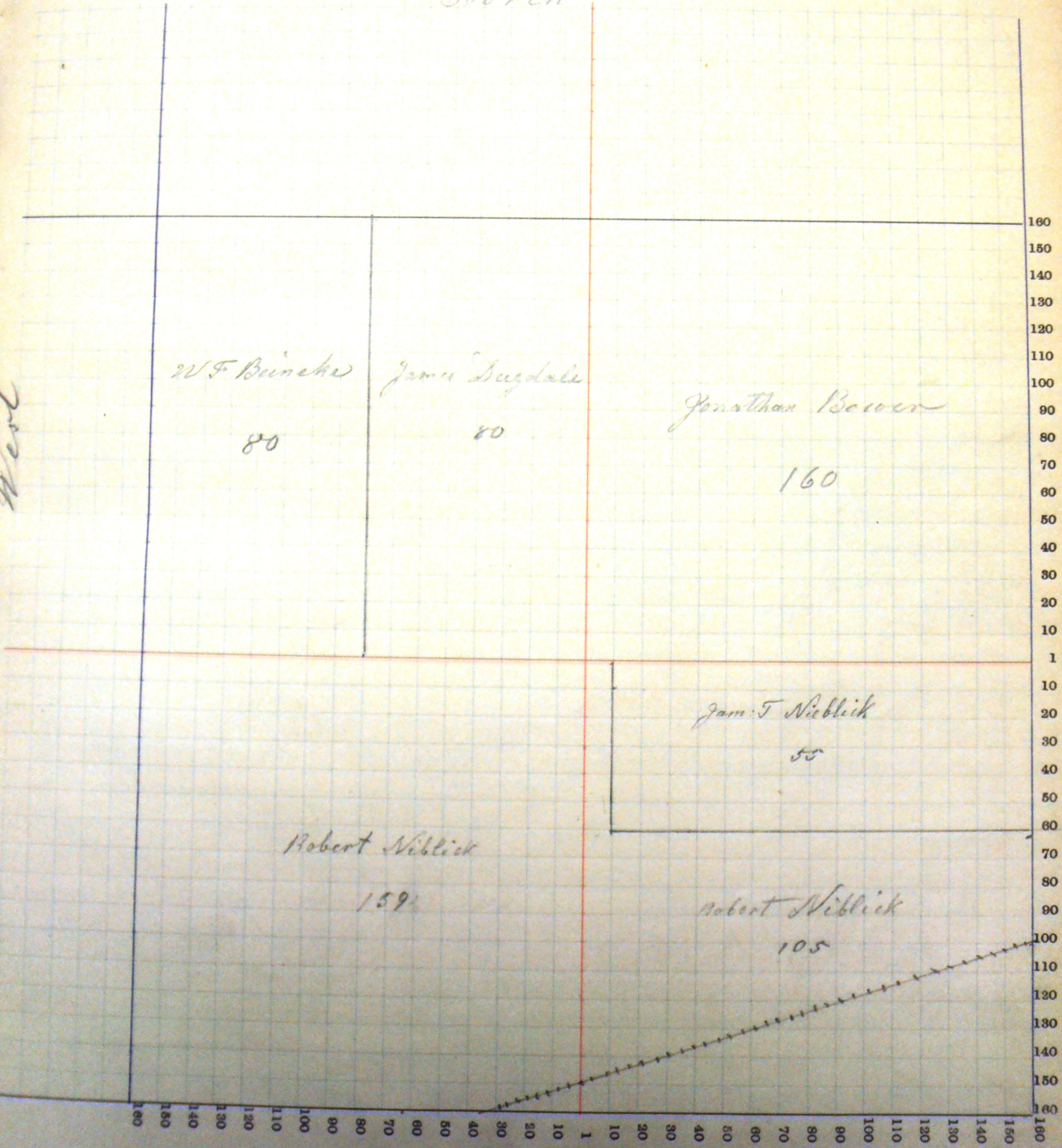
SECTION No. 10.

Congressional Township No. 27, R. 13

Scale—Forty rods to an inch, or ten rods to a space, Congress Land, which is one mile square for a section.
Number of acres in this section, according to the United States Survey,

North

West



South

COUNTY, INDIANA, 189

Assessor's Plat-Book for *Hickland*

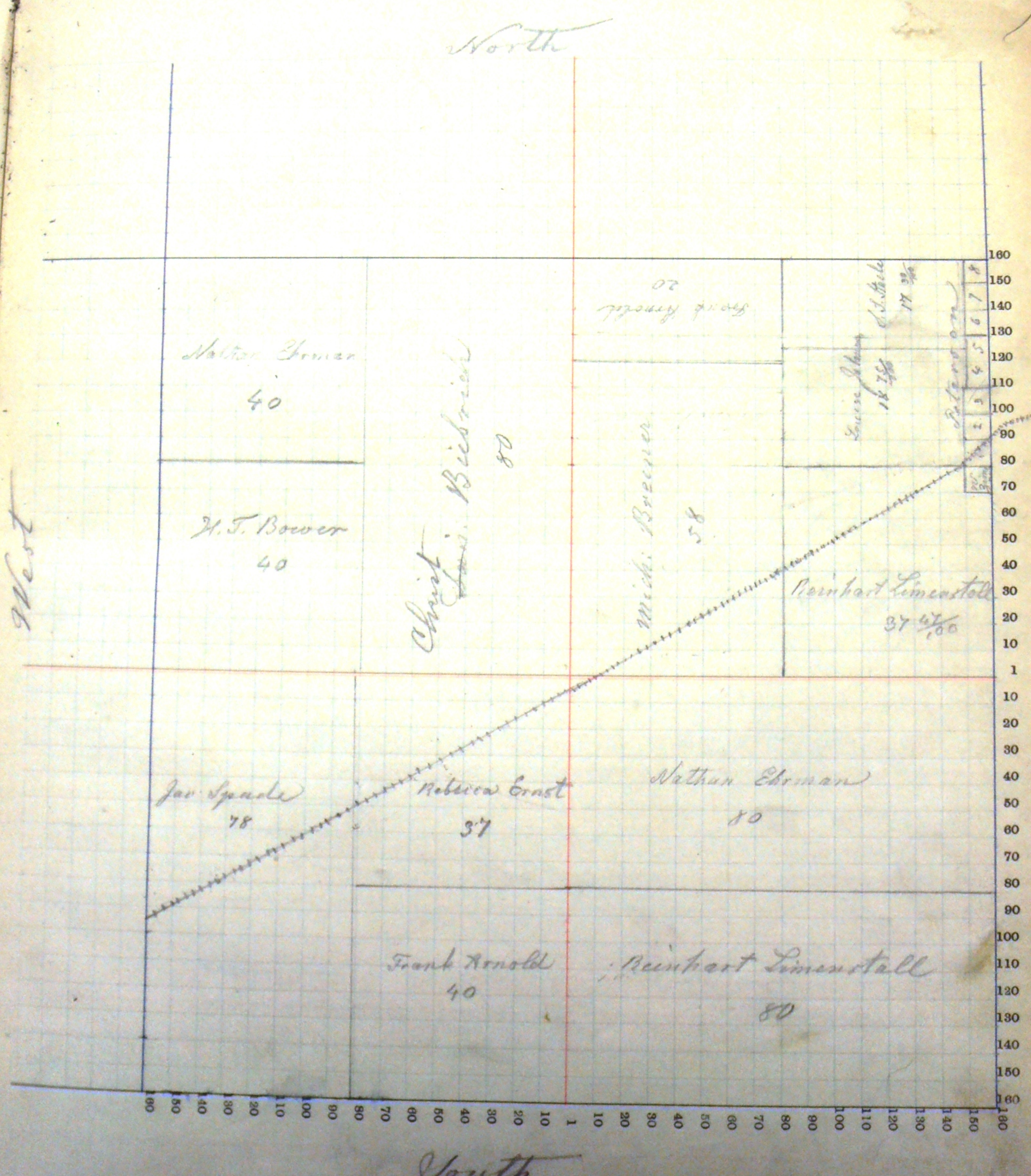
Township, No. _____

NAMES OF OWNERS.	Number on Plat.	DESCRIPTION.	Section.	Township.	Range.	Acres.	Hundredths.	Value of Lands.	Value of Improvements.	Value of Lands and Improvements.
<i>Spade Jacob</i>		<i>W_{1/2}</i>	<i>SE</i>	<i>11</i>	<i>27</i>	<i>13</i>	<i>78</i>	<i>1540</i>	<i>1000</i>	<i>2540</i>
<i>Ernst Rebecca A.</i>		<i>NE</i>	<i>SW</i>	<i>-</i>	<i>-</i>	<i>37</i>		<i>700</i>	<i>75</i>	<i>775</i>
		<i>pt NE</i>	<i>NE</i>	<i>-</i>	<i>-</i>		<i>25</i>			
<i>Ehrman Nathan</i>		<i>W_{1/2}</i>	<i>SE</i>	<i>-</i>	<i>-</i>	<i>30</i>		<i>1590</i>	<i>1100</i>	
		<i>SW</i>	<i>SW</i>	<i>-</i>	<i>-</i>	<i>40</i>		<i>800</i>	<i>50</i>	<i>3540</i>
<i>Steele J. S.</i>		<i>pt NE</i>	<i>NE</i>	<i>-</i>	<i>-</i>	<i>17</i>	<i>30</i>	<i>350</i>	<i>250</i>	<i>700</i>
<i>Arnold Frank</i>		<i>SE</i>	<i>SW</i>	<i>-</i>	<i>-</i>	<i>40</i>		<i>250</i>	<i>850</i>	
		<i>N_{1/2} NW</i>	<i>NE</i>	<i>-</i>	<i>-</i>	<i>20</i>		<i>450</i>		<i>2100</i>
<i>Lenhard J. H.</i>		<i>pt NE</i>	<i>NE</i>	<i>-</i>	<i>-</i>		<i>20</i>	<i>500</i>	<i>250</i>	<i>250</i>
<i>Steele & Lenhard</i>		<i>pt NE</i>	<i>NE</i>	<i>-</i>	<i>-</i>		<i>20</i>	<i>500</i>	<i>250</i>	<i>270</i>
<i>Bower M. T.</i>				<i>11</i>	<i>27</i>	<i>12</i>	<i>40</i>	<i>800</i>	<i>265</i>	<i>1065</i>
<i>Breiner Mich:</i>		<i>pt W_{1/2}</i>	<i>SE</i>	<i>11</i>	<i>27</i>	<i>13</i>	<i>58</i>	<i>1160</i>	<i>250</i>	<i>1410</i>
<i>Biebrich Dan</i>				<i>11</i>	<i>27</i>	<i>13</i>	<i>80</i>	<i>1600</i>	<i>400</i>	<i>2000</i>
<i>Waldy Elisab: M.</i>		<i>pt NE</i>	<i>NE</i>	<i>11</i>	<i>27</i>	<i>13</i>		<i>50</i>	<i>25</i>	<i>275</i>
<i>Zimmerman Wm.</i>		<i>pt SE</i>	<i>NE</i>	<i>-</i>	<i>-</i>		<i>33</i>	<i>25</i>	<i>250</i>	<i>270</i>
<i>Limesstall Reinhart</i>		<i>E_{1/2}</i>	<i>SE</i>	<i>-</i>	<i>-</i>	<i>80</i>		<i>1600</i>	<i>350</i>	
		<i>pt SE</i>	<i>NE</i>	<i>-</i>	<i>-</i>	<i>37</i>	<i>47</i>	<i>740</i>	<i>35</i>	<i>2725</i>
<i>Steele Robert</i>		<i>NE corner</i>	<i>NE</i>	<i>-</i>	<i>-</i>		<i>168</i>	<i>25</i>	<i>25</i>	<i>175</i>
<i>Johnson Louisa</i>		<i>pt NE</i>	<i>NE</i>	<i>-</i>	<i>-</i>	<i>18</i>	<i>75</i>	<i>380</i>	<i>340</i>	<i>720</i>

SECTION No. 11.

Congressional Township No. 27, R. 12

Scale—Forty rods to an inch, or ten rods to a space, Congress Land, which is one mile square for a section.
 Number of acres in this section, according to the United States Survey,



COUNTY, INDIANA, 189

Assessor's Plat-Book for Highland Township, No. _____

NAMES OF OWNERS.	Number on Plat.	DESCRIPTION.	Section.	Township.	Range.	Acres.	Hundredths.	Value of Lands.	Value of Improvements.	Value of Lands and Improvements.
Baker John T		NEpt				12 27 13 78		1560	1140	2700
Martman Caroline						12 27 13 60		1200	600	1800
Welty W. B.		Sppt				SW - - - 96		1920	1125	3045
"		N/2				SW - - - 80		1600		
"		Wpt				SE 1 - - 40		800	575	6020
Beavers J. D.		1/2				SE " - - 80				
"		1/2 1/2 N/2				SE - - - 20				
Beery Ab J.										
Zimmerman Joni						12 " " 80		1600		

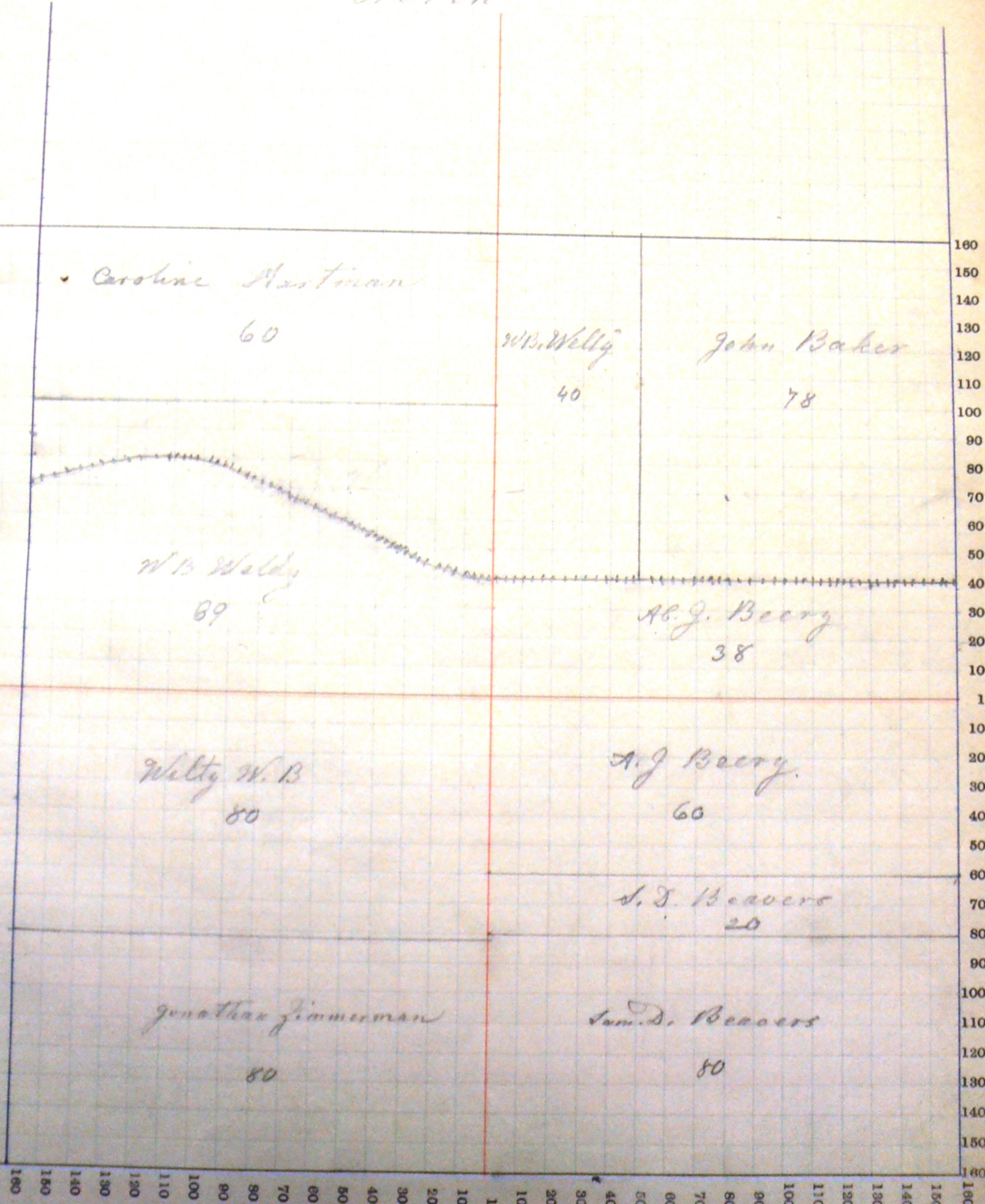
SECTION No. 12.

Congressional Township No. 27, R. 13

Scale—Forty rods to an inch, or ten rods to a space, Congress Land, which is one mile square for a section.
Number of acres in this section, according to the United States Survey,

North

West



South