

PLAT BOOK FOR THE YEAR 1907

NAMES OF OWNERS.	Number of Acs.	DESCRIPTION.	Section.	Township.	Range.	Acres.	Homestead.	Value of Land.	Value of Improvements.	Value of Land and Improvements.
Mary E Steel	1	1/2 Sw	1	27	13	102		2700	700	3400
David Steel	2	1/2 1/2 Sw	1	27	13	30		10		10
Paulinda Baker	3	1/2 1/2 Sw	1	27	13	30		860	200	1060
John T Baker	4	1/2 1/2 Sw	1	27	13	6		165		165
Lewis Goldman	5	1/2 1/2 Sw	1	27	13	20		700		
" " "		1/2 1/2 Sw	1	27	13	60		1793	700	
" " "		1/2 1/2 Sw	1	27	13	15		513		3125
Elias E Goldman	6	1/2 1/2 Sw	1	27	13	30		855	200	1035
August Worling	7	1/2 1/2 Sw	1	27	13	112		1215	450	1670
Joseph Daniels		Probate	16	1	27	13		10	260	
" " "		" " "	17	1	27	13		10	150	420
Rosy Vinson & Jennie Lester	"	" " "	21	1	27	13		10	300	310
Emma Goldman	"	" " "	22	1	27	13		10	45	65
Wm R Kerschner		S. 1/2 W. 1/2 N. 20	1	27	13	110		1160	1100	
" " "		Probate	19	1	27	13		10	250	
" " "		" " "	20	1	27	13		10	400	1830
James K Fumblerson		1/2 N.E.	1	27	13	114 76		3250	1000	4250
David Worling		1/2 E. 1/2 N.W.	1	27	13	20		670		
" " "		1/2 N. 1/2 W.	1	27	13	37 13		1015	1300	3885
" " "		Probate	23					10		
" " "		" " "	24					10		
" " "		" " "	25					40		
" " "		" " "	27					10		50
The Indiana Pipe Line Co		1/2 N.E.	1	27	13	60		1700		1700
Seth D Pearson		E. 1/2 S.E.	1	27	13	80		2190	300	2490
Wm B Welch		1/2 S.E.	1	27	13	14		400		400
August Grunwaldt		Probate	18					10	300	310

Land per acre 2867

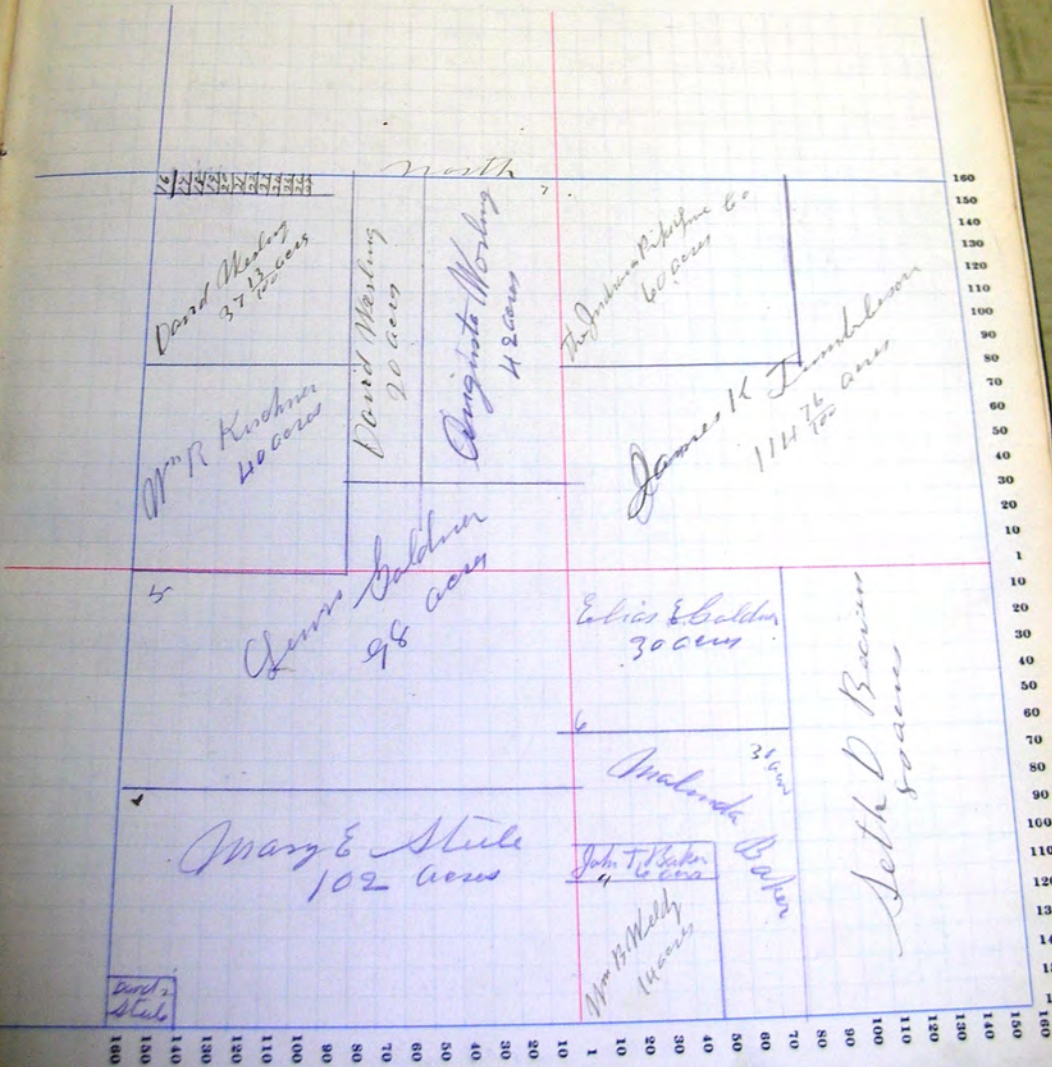
Improvements 971

18319

SECTION No. 1

Congressional Township No. 27, R. 13

SCALE—Forty rods to an inch, or ten rods to a space, Congress Land, which is one mile square for a section.  
Number of acres in this section, according to the United States Survey, 476





SECTION No. 2.

Congressional Township No. 27, R. 13

SCALE—Forty rods to an inch, or ten rods to a space, Congress Land, which is one mile square for a section.  
 Number of acres in this section, according to the United States Survey, 66



Adams

COUNTY, INDIANA, 1907.

Assessor's Plat-Book for Kushland

Township, No. 27

NAMES OF OWNERS.	Number of Tracts.	DESCRIPTION.	Section.	Township.	Range.	Acres.	Hundredths.	Value of Land.	Value of Improvements.	Value of Land and Improvements.
Henry Worthman		E 1/2 NW	3	27	13	50		2210		2210
Daniel J. Schery		W 1/2 NE	3	27	13	50		2250	75 50	2400
Henry & Emma D. Kalmstrom		pt NE	3	27	13	24		640		
" " " "		N 1/2 NW	3	27	13	77		2170		2820
Edward B. & Bertha Schery		pt NE	3	27	13	24		640		
" " " "		S 1/2 NW	3	27	13	50		2185	300	3130
Fred Schlickema		E pt SE	3	27	13	100		2750	450	3200
Jacob & Samuel Berger		W 1/2 SW	3	27	13	83		2270	500	3070
Delma Ely		pt cor NW	3	27	13	1		30	50	80
Ernest H. Kuntzman		pt SW cor E 1/2 SE	3	27	13	1		30		30
Ernest H. & Lydia R. Kuntzman		W pt SE	3	27	13	57		1850		
" " " " "		pt E 1/2 SW	3	27	13	75		2155	400	4165

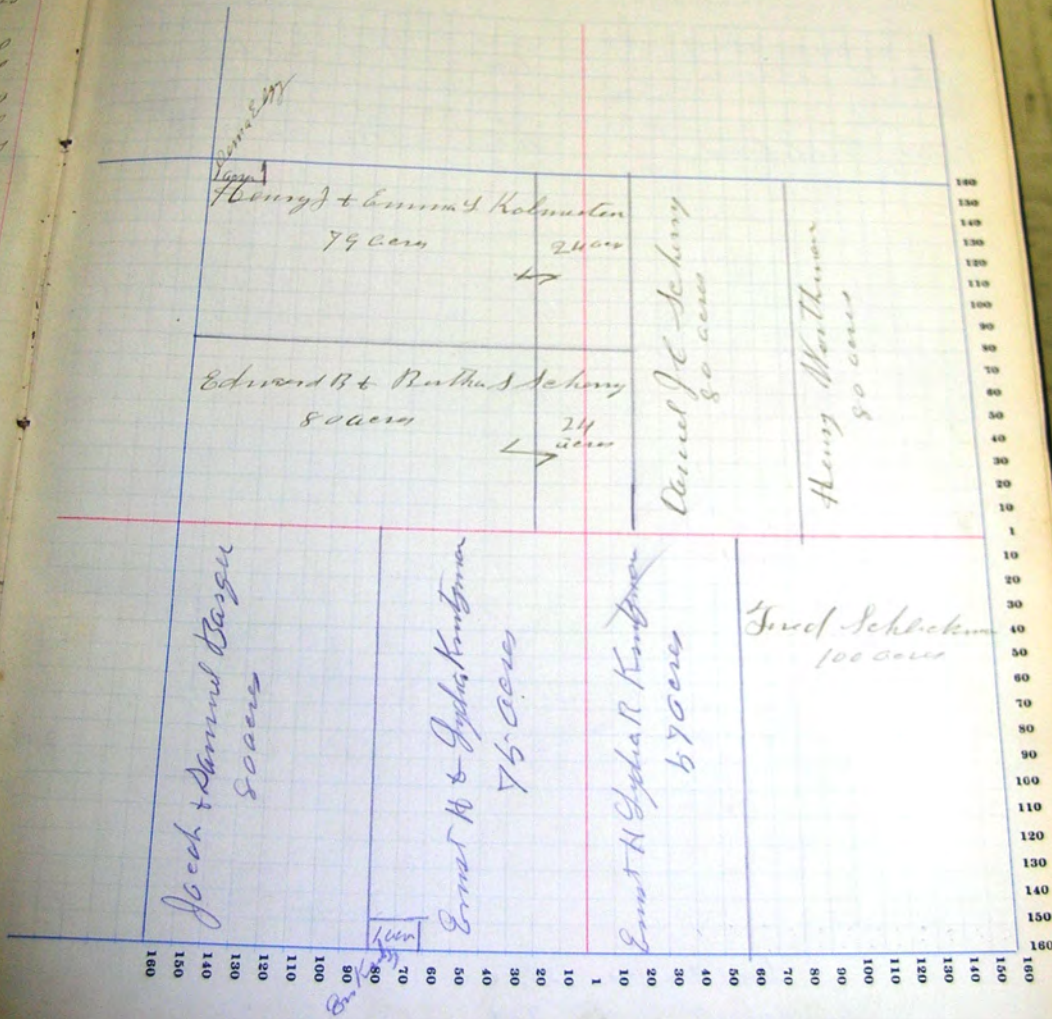
Land per acre 2187

SECTION No. 3

Congressional Township No. 27, R. 13

SCALE—Forty rods to an inch, or ten rods to a space, Congress Land, which is one mile square for a section. Number of acres in this section, according to the United States Survey, 677

Value of Land and Improvements
2210
2800
2820
2130
2200
000
80
30
64



Adams

COUNTY, INDIANA, 1907.

Assessor's Plat-Book for KirklandTownship, No. 27

NAMES OF OWNERS	Number of Plots	DESCRIPTION	Section	Township	Range	Acres	Homestead	Value of		Value of
								Land.	Improvements.	
Peter Hebrich	11	pt NW NW	4	27	13	85		1300	100	1400
Frank & Margaret Kufus	11	pt NW NW	4	27	13	24		510	125	635
Joseph & Samuel Wagner		E 1/2 SE	4	27	13	80		2100		2100
Martha M. Shady		SW	4	27	13	80		1530	250	2180
Master Mrs. Joseph Shady		pt NW	4	27	13	25		350		450
Peter Hebrich		SW	4	27	13	159		1350	600	
do "		NW	4	27	13	80		2180		
do "		pt SW	4	27	13	1		30	400	7560
Henry Hildebrand		NE	4	27	13	182		1860	750	5600
do "		SE	4	27	13	1				

Land per acre 25.81  
 Improvements 324  
 29.05  
 17710  
 686 2225

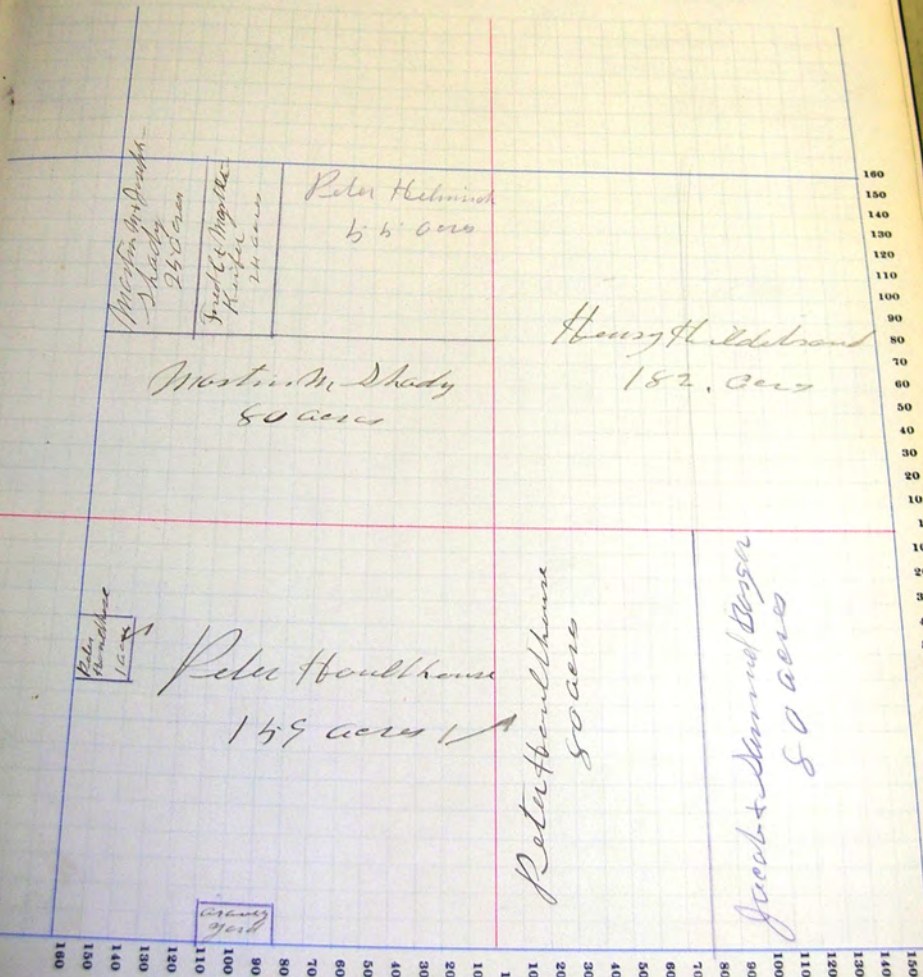
SCALE—Forty rods to an inch, or ten rods to a space, Congress Land, which is one mile square for a section.  
 Number of acres in this section, according to the United States Survey,

Value of  
Improvements

Value of  
Land and  
Improvements

100 1400  
 125 636  
 2100  
 50 2180  
 450

7560  
 5600



160  
150  
140  
130  
120  
110  
100  
90  
80  
70  
60  
50  
40  
30  
20  
10  
1  
10  
20  
30  
40  
50  
60  
70  
80  
90  
100  
110  
120  
130  
140  
150  
160



*Adams*

COUNTY, INDIANA, 1907.

Assessor's Plat-Book for *Kirkland*

Township, No. *27*

P. B. 1907, PLAT BOOK No. 100000000

NAMES OF OWNERS.	Number on Plat.	DESCRIPTION.	ACRES.			Value of Land.	Value of Improvements.	Value of Land and Improvements.
			Section.	Township.	Range.			
<i>Nicholas Barger</i>		<i>pt SW</i>	<i>9</i>	<i>27</i>	<i>11</i>	<i>120</i>	<i>31.00</i>	<i>31.00</i>
<i>Jamesa Steele</i>		<i>1/2 SE</i>	<i>9</i>	<i>27</i>	<i>13</i>	<i>50</i>	<i>2164</i>	<i>800</i>
<i>Jesse Barger</i>		<i>1/2 SW</i>	<i>9</i>	<i>27</i>	<i>17</i>	<i>50</i>	<i>2145</i>	<i>560</i>
<i>" "</i>		<i>SE</i>	<i>9</i>	<i>27</i>	<i>13</i>	<i>110</i>	<i>1030</i>	
<i>Ernst Schlickman</i>		<i>1/2 SW</i>	<i>9</i>	<i>27</i>	<i>13</i>	<i>160</i>	<i>1400</i>	<i>150</i>
<i>Chas Susie Rappert</i>		<i>NE</i>	<i>9</i>	<i>27</i>	<i>13</i>	<i>157</i>	<i>1300</i>	<i>750</i>

1907.

SECTION No. 9

Congressional Township No. 27, R. 13

SCALE—Forty rods to an inch, or ten rods to a space, Congress Land, which is one mile square for a section.  
Number of acres in this section, according to the United States Survey, 644

Value of  
Land and  
Improvements  
3100  
2965  
4800  
5050

