

Adams

COUNTY, INDIANA, 1907.

Assessor's Plat-Book for Kendall

Township, No. 27

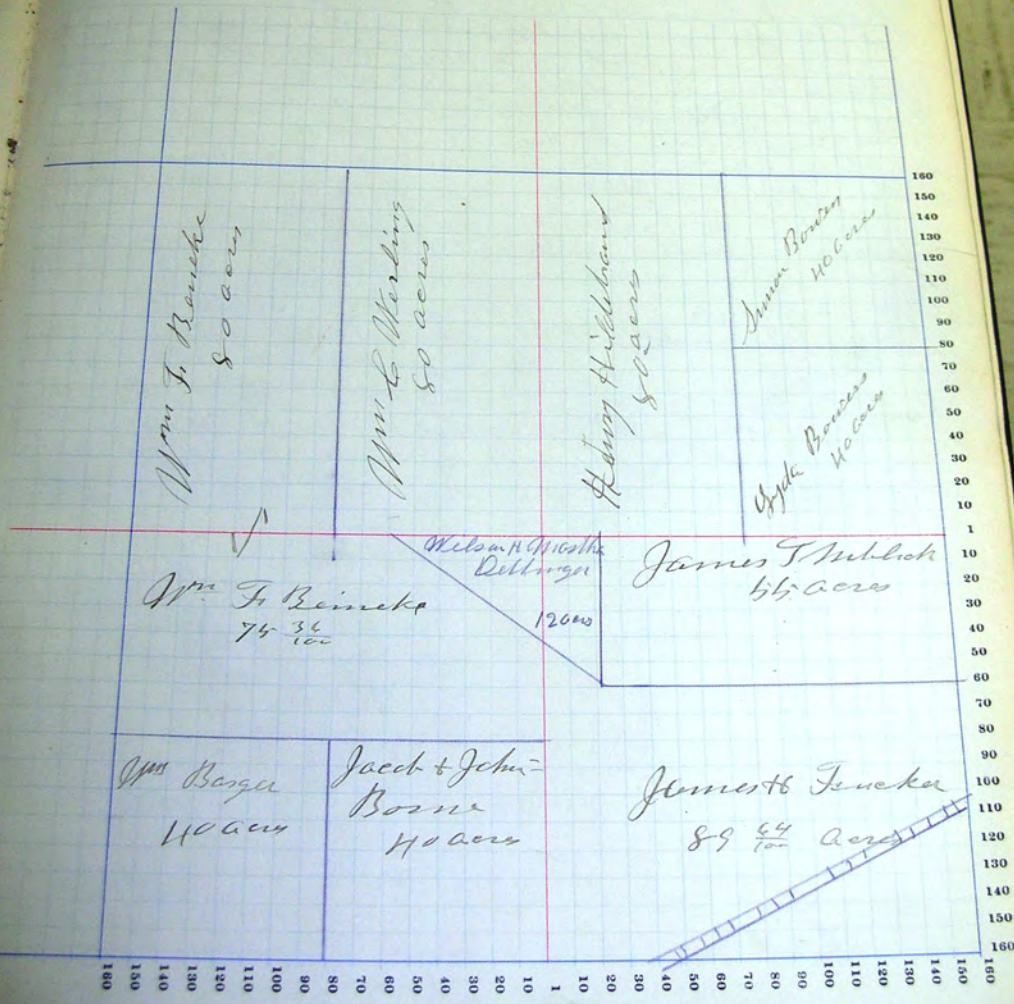
NAMES OF OWNERS.	Number in Plat.	DESCRIPTION.	Section.	Township.	Range.	Acres.	Value of Land.	Value of Improvements.	Value of Lands and Improvements.	
Wilson & Martha Dettmer		pt E 1/2 SW 1/4	36	10	27	13	12	210	210	
J. Bamski		SW 1/4 NW	10	27	13	80	2165	500	2665	
		pt NW 1/2 NW	10	27	13	75	34	2000	4665	
Wm C. Wisking		E 1/2 NW	10	27	13	80	2200	311	2510	
Syda Bowles		S 1/2 E 1/2 SW	10	27	13	40	7090	200	1270	
Wm Basger		SW 1/2 S 1/2 SW	10	27	13	140	1045		1045	
Jacob & John H. Besne		E 1/2 S 1/2 SW	10	27	13	140	1060		1060	
James H. Tucker		pt S 1/2 SE	10	27	13	87	44	2340	250	2590
James T. Mubliok		pt SE	10	27	13	55	1470	160	1640	
Simon Baucus		NE 1/2 E 1/2 NE	10	27	13	140	1050	175	1225	
Henry Hildebrand		NE 1/4 NE	10	27	13	80	2220	650	2870	

SECTION No. 10

Congressional Township No. 27, R. 13

SCALE—Forty rods to an inch, or ten rods to a space, Congress Land, which is one mile square for a section.
Number of acres in this section, according to the United States Survey, 645

Value of
Land and
Improvements
280
666
501
270
46
60
50
40
4
0



Adams

COUNTY, INDIANA, 1907.

Assessor's Plat-Book for *Highland*

Township, No. _____

NAMES OF OWNERS.	DESCRIPTION.	Section.	Township.	Range.	Acres.	Mileage.	Value of Lands.	Value of Improvements.	Value of Lands and Improvements.
Christian D. Koberich	E 1/2 NW	11	27	13	50		2280	700	
" " "	SW 1/4 E 1/2 SW	11	27	13	37		1040	125	1145
Charles C. Arnold	N 1/2 NW NE	11	27	13	20		565		665
Mathew E. Chasman	W 1/2 SE	11	27	13	80		2150	500	
" " "	pt E 1/4 SE	11	27	13	1 50		75		
" " "	pt NW 1/4 NE	11	27	13	55		1500	75	1700
Frank Arnold	S 1/4 E 1/4 SW	11	27	13	40		1065	1450	7415
Marjorie M. Brown	pt NE NE	11	27	13	17 50		510	350	560
Jessie Johnson	pt NE NE	11	27	13	15		515	250	765
Catharine J. McWhorter	pt NE NE	11	27	13	50		15	200	215
Harriet M. Brown	SW NW	11	27	13	40		1100	700	1800
Harriet M. Bowen	NW NW	11	27	13	40		1080		1080
Jacob Spade	NW 1/4 SW	11	27	13	75		2050	1450	2500
" " "	S 1/4 NW	11	27	13	100		1050		2000
Hemza Bremer	pt NE NE	11	27	13			50	15	300
Rimbert O. Leimertell	pt E 1/4 SE	11	27	13	76		20	2060	2060
do	pt SE NE	11	27	13	37		17	930	930
do	pt SE NE	11	27	13			33	15	250
Amie Straub	pt NE NE	11	27	13			45	20	280
Rebecca Ernst	pt NE NE	11	27	13			25	10	250
George A. Ernst	NE Cor NE	11	27	13			24	10	175

SECTION No. 11

Congressional Township No. 77, R. 13

SCALE - Forty rods to an inch, or ten rods to a space, Congress Land, which is one mile square for a section.
 Number of acres in this section, according to the United States Survey, 648

Value of Improvements	Value of Land and Improvements
120	
135	4145
140	665
150	
160	
170	
180	
190	
200	
210	
220	
230	
240	
250	
260	
270	
280	
290	
300	
310	
320	
330	
340	
350	
360	
370	
380	
390	
400	
410	
420	
430	
440	
450	
460	
470	
480	
490	
500	
510	
520	
530	
540	
550	
560	
570	
580	
590	
600	
610	
620	
630	
640	
650	
660	
670	
680	
690	
700	
710	
720	
730	
740	
750	
760	
770	
780	
790	
800	
810	
820	
830	
840	
850	
860	
870	
880	
890	
900	
910	
920	
930	
940	
950	
960	
970	
980	
990	
1000	



Adams

COUNTY, INDIANA, 1907.

Assessor's Plat-Book for Kirkland

Township, No. 27

NAMES OF OWNERS.	Number of Plat.	DESCRIPTION.	Section.	Township.	Range.	Acres.	Value of Land.	Value of Improvements.	Value of Land and Improvements.
John T Beckel		1/2 pt NE	12	27	13	75	2200	800	3000
Caroline Hoshorn	2	1/2 pt NW	12	27	13	60	1670	450	2120
Samuel D Beaman		1/2 SE	12	27	13	50	2150	650	
" " "		1/2 pt NE	12	27	13	20	540		3400
" " "		1/2 SE	12	27	13	50	2150		5100
A J Beery		1/2 pt NW	12	27	13	60	1630	450	
" " "		1/2 pt NE	12	27	13	38	1035		3215
Jim J. "		1/2 NW	12	27	13	50	2260	740	3000
Wm B Welch		1/2 pt NW	12	27	13	100	2640	750	3390
do		1/2 NW	12	27	13	50	2140		2140
do		1/2 pt NE	12	27	13	40	1130	350	1480
Henry Beaman		1/2 pt NW	12	27	13	175	40	175	215

Land per acre 24.35
 Tax per 6.40

1746.5

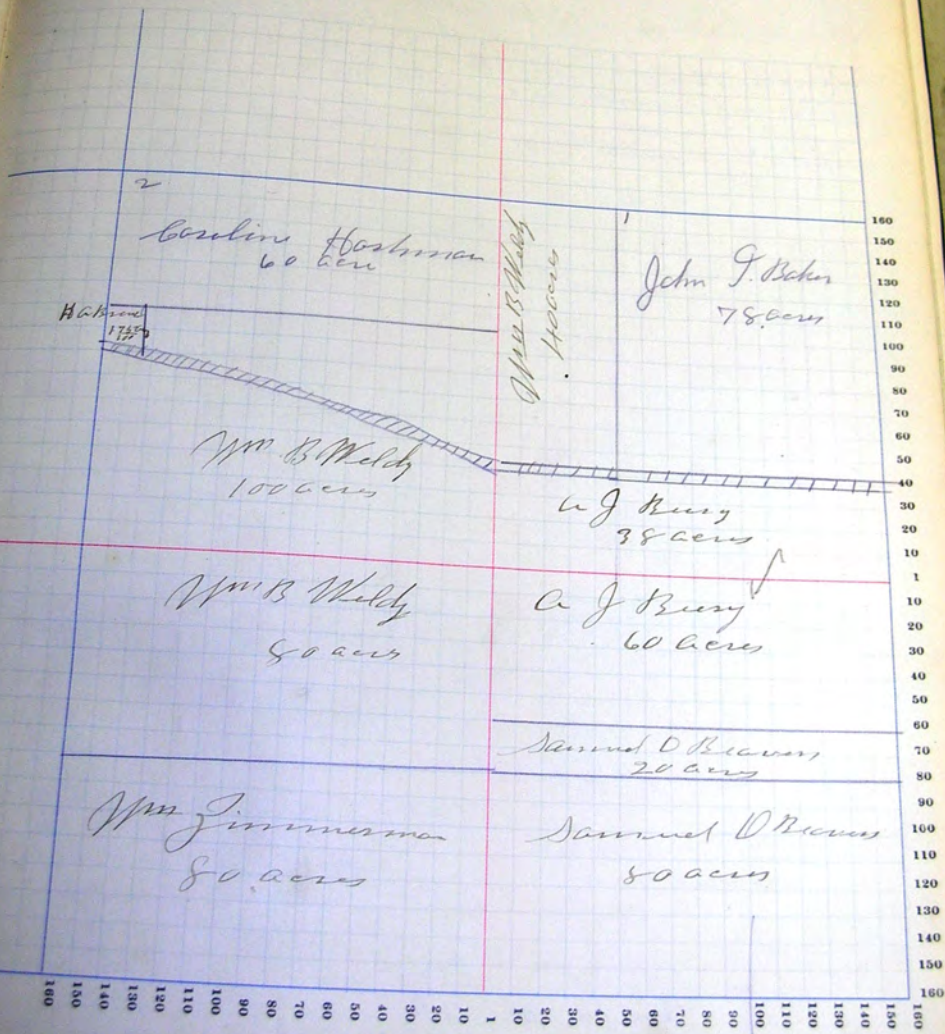
SECTION No. 12

Congressional Township No. 22, R. 13

SCALE—Forty rods to an inch, or ten rods to a space, Congress Land, which is one mile square for a section.
Number of acres in this section, according to the United States Survey, 641.2

Value of Land and Improvements

3000
2720
2400
500
3215
000
350
140
80
15



Adams COUNTY, INDIANA, 1907.

Assessor's Plat-Book for Keokuk Township, No. 27

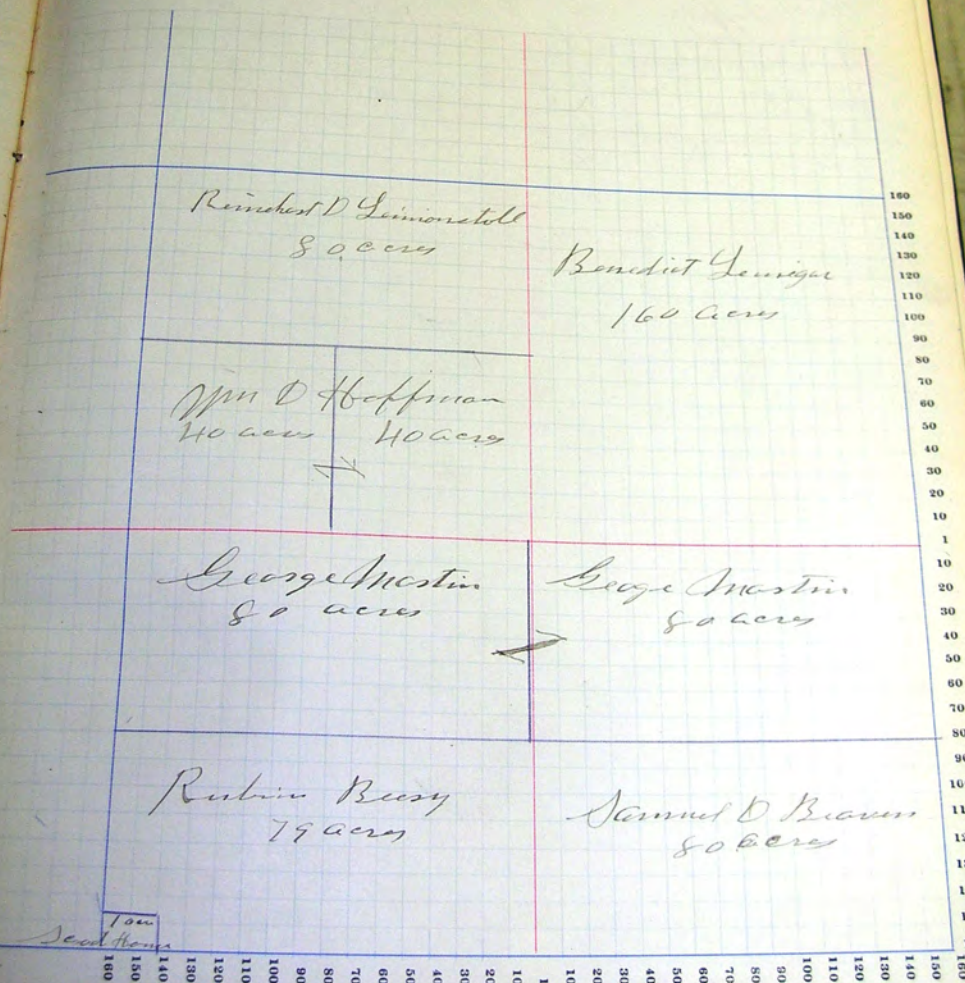
NAMES OF OWNERS.	Number of Plats	DESCRIPTION.	Acres.	Value of Land.	Value of Improvements.	Value of Land and Improvements.
Wm D Hoffman		S10 SW 13 27 13 W	1110	650		
" "		SE SW 13 27 13 W	1000			2760
George Martin		N 1/2 SW 13 27 13 W	2245	500		
" " "		N 1/2 SE 13 27 13 W	2175	300		4620
Reubin Reay		pt S 1/2 SW 13 27 13 W	2160	450		2610
Massie & Thayer		S 1/2 SE 13 27 13 W	2100	300		2400
Benedict Gennigan		N 1/2 SE 13 27 13 160	4250	400		4650
Rancher D Lemmings		N 1/2 N 1/2 W 13 27 13 W	2200	340		2540

Land per Acre 2696
 Improv " 502
 3198

17270
 3350

SCALE—Forty rods to an inch, or ten rods to a space, Congress Land, which is one mile square for a section.
Number of acres in this section, according to the United States Survey, 640

Value of improvements.	Value of Land and improvements.
60	
2760	
5620	
2610	
2400	
4650	
2550	



1 acre
Seed House

160
150
140
130
120
110
100
90
80
70
60
50
40
30
20
10
1
10
20
30
40
50
60
70
80
90
100
110
120
130
140
150
160

160
150
140
130
120
110
100
90
80
70
60
50
40
30
20
10
1
10
20
30
40
50
60
70
80
90
100
110
120
130
140
150
160

Adams

COUNTY, INDIANA, 1907.

Assessor's Plat-Book for Kirkland

Township, No. 27

NAMES OF OWNERS.	Number on Plat.	DESCRIPTION.			Acres.	Value of Land.	Value of Improvements.	Value of Land and Improvements.
		Section.	Township.	Range.				
Frank Arnold		N 1/2	SW	14 27 13	80	2115	250	2365
James Shell		N 1/2	SW	14 27 13	160	4430	1000	5430
Wm D Hoffman		NE	SE	14 27 13	160	1100		1100
Jack Spade		SW	SW	14 27 13	40	1050		1050
James & James Byrd		E 1/2	SW	14 27 13	80	2200	1000	
Wm E Thomas		S 1/2 E 1/2	SW	14 27 13	40	1050		4250
Wm E Thomas		W 1/2	SW	14 27 13	80	2150	400	2550
E C Zimmerman		N 1/2	SE	14 27 13	80	2140	600	2740
do		SE	SE	14 27 13	40	1060		1060

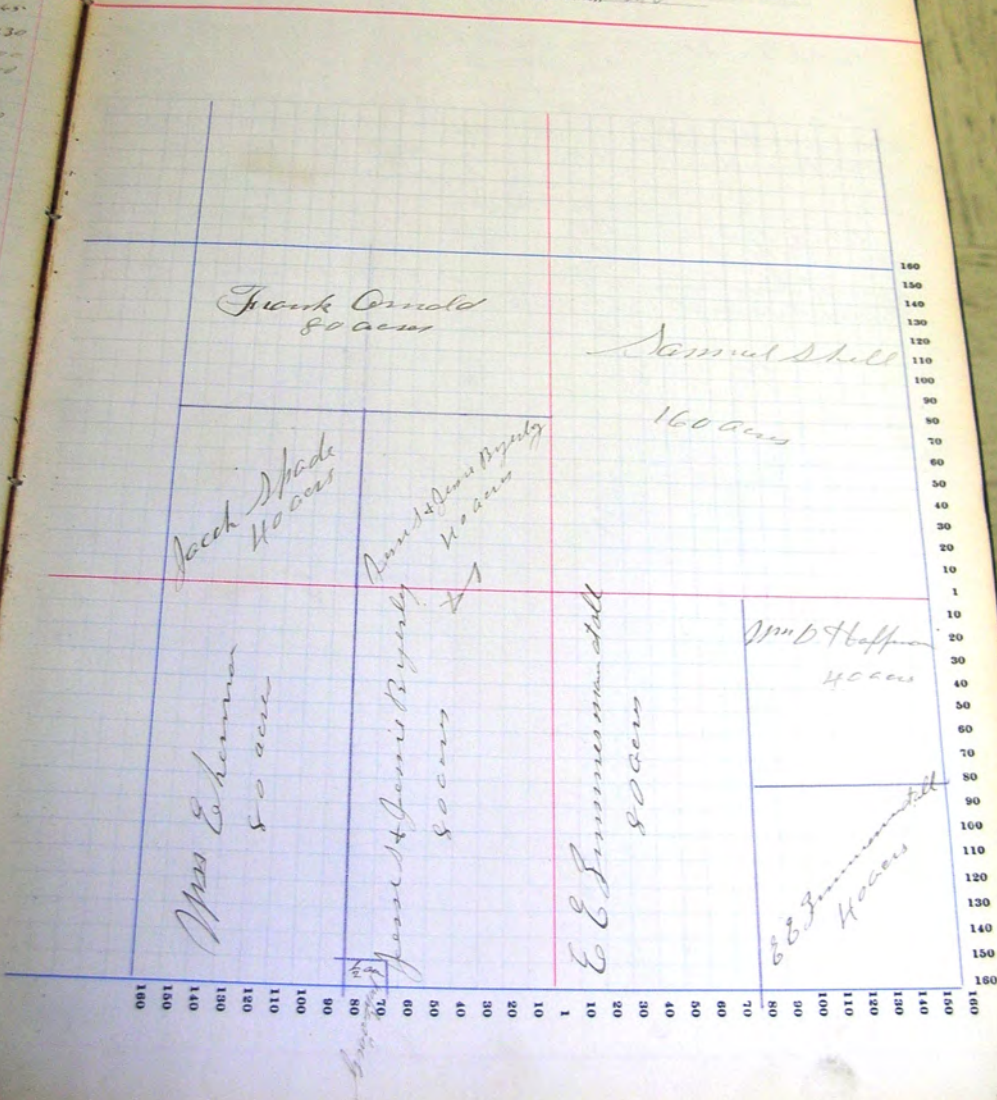
SECTION No. 111

Congressional Township No. 27, R. 12

Value of
land
acres

2500
52630
1100
1080
4280
2450
2740
1160

SCALE—Forty rods to an inch, or ten rods to a space, Congress Land, which is one mile square for a section.
Number of acres in this section, according to the United States Survey, 640



Frank Arnold
80 acres

Samuel Shell

160 acres

Jacob Wade
40 acres

Ann & James Bygely
40 acres

Mrs. E. Hanna
80 acres

James & James Bygely
80 acres

E. E. Zimmerman
80 acres

Mrs. D. Hoff
40 acres

E. E. Zimmerman
40 acres

180 160 140 120 100 80 70 60 50 40 30 20 10 1 10 20 30 40 50 60 70 80 90 100 110 120 130 140 150 160

Admission

COUNTY, INDIANA, 1907.

Assessor's Plat-Book for *Wheatland*

Township, No. *27*

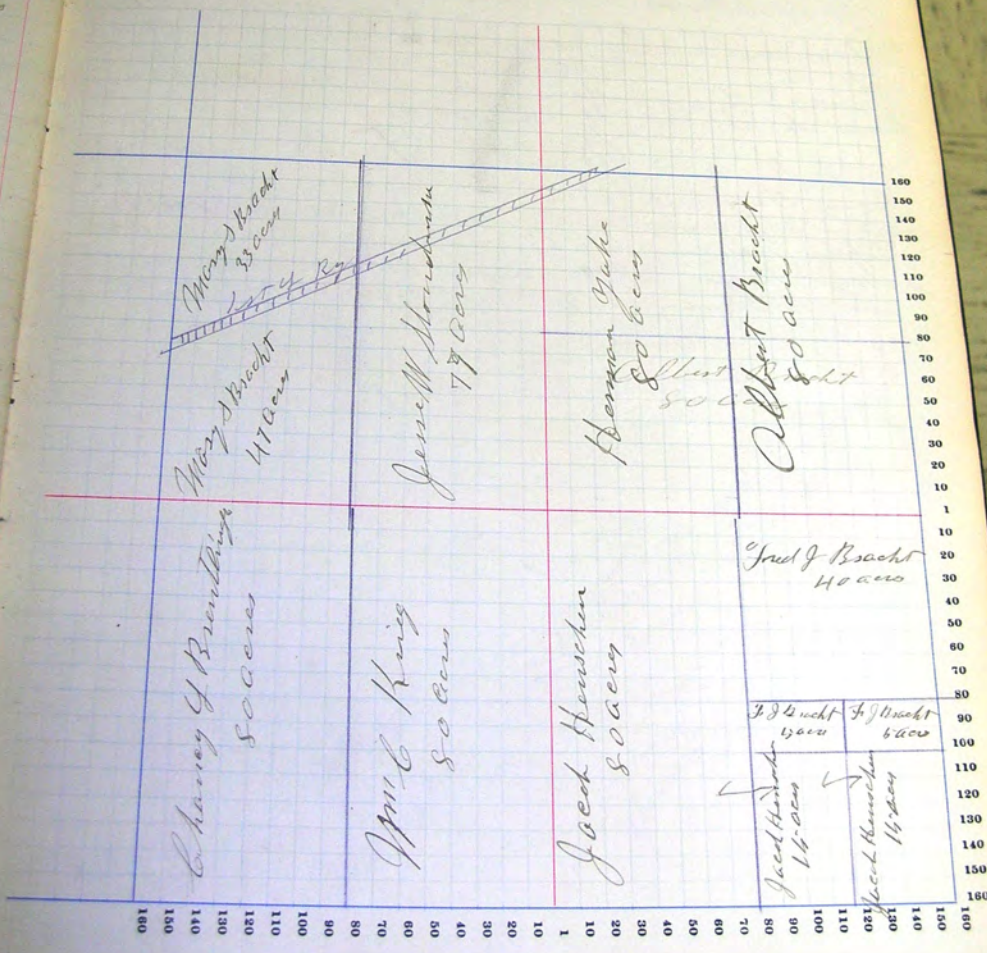
NAMES OF OWNERS.	Number of Plat.	DESCRIPTION.	Section.	Township.	Range.	Acres.	Homesteads.	Value of Land.	Value of Improvements.	Value of Land and Improvements.
<i>Fred D Bracht</i>		<i>N 1/2 E 1/2 S 6</i>	<i>15</i>	<i>27</i>	<i>13</i>	<i>10</i>		<i>1100</i>	<i>100</i>	
<i>" " "</i>		<i>E 1/2 se se</i>	<i>14</i>	<i>27</i>	<i>13</i>	<i>5</i>		<i>140</i>		
<i>" " "</i>		<i>W 1/2 se se</i>	<i>15</i>	<i>27</i>	<i>13</i>	<i>5</i>		<i>140</i>		<i>1780</i>
<i>Wm C King</i>		<i>E 1/2 S 15</i>	<i>15</i>	<i>27</i>	<i>13</i>	<i>80</i>		<i>2140</i>	<i>650</i>	<i>2790</i>
<i>Chas J Brantigan</i>		<i>W 1/2 S 15</i>	<i>15</i>	<i>27</i>	<i>13</i>	<i>80</i>		<i>2180</i>	<i>700</i>	<i>2880</i>
<i>Jacob Henschen</i>		<i>W 1/2 S 6</i>	<i>14</i>	<i>27</i>	<i>13</i>	<i>80</i>		<i>2220</i>	<i>600</i>	
<i>" " "</i>		<i>W 1/2 ne se</i>	<i>14</i>	<i>27</i>	<i>13</i>	<i>15</i>		<i>400</i>		
<i>" " "</i>		<i>E 1/2 ne sw</i>	<i>15</i>	<i>27</i>	<i>13</i>	<i>15</i>		<i>410</i>		<i>3630</i>
<i>Albert Bracht</i>		<i>E 1/2 N 6</i>	<i>15</i>	<i>27</i>	<i>13</i>	<i>50</i>		<i>2100</i>	<i>540</i>	<i>2640</i>
<i>Harmon Moke</i>		<i>W 1/2 N 6</i>	<i>15</i>	<i>27</i>	<i>13</i>	<i>50</i>		<i>2100</i>	<i>250</i>	<i>2350</i>
<i>Jessell Henschen</i>		<i>E 1/2 N 6</i>	<i>15</i>	<i>27</i>	<i>13</i>	<i>77</i>		<i>2000</i>	<i>400</i>	<i>2400</i>
<i>Henry D Bracht</i>		<i>W 1/2 ne sw</i>	<i>15</i>	<i>27</i>	<i>13</i>	<i>47</i>		<i>1550</i>	<i>375</i>	
<i>" " "</i>		<i>W 1/2 ne sw</i>	<i>15</i>	<i>27</i>	<i>13</i>	<i>33</i>		<i>850</i>		<i>2375</i>

SECTION No. 16

Congressional Township No. 27, R. 13

SCALE—Forty rods to an inch, or ten rods to a space, Congress Land, which is one mile square for a section. Number of acres in this section, according to the United States Survey, 6400

Value of Improved Land	Value of Town and Survey Fees
100	
1750	
3750	
2550	
3630	
2650	
2350	
2400	
2776	



Marys Bracht
23 acres

Marys Bracht
410 acres

Charney & Brent Dix
500 acres

Gene W. Mowbram
77 acres

Jacob King
80 acres

Herman Gube
80 acres

Jacob Henschel
80 acres

Albert Bracht
80 acres

Fred J. Bracht
40 acres

Fred Bracht
130 acres

Fred Bracht
60 acres

Jacob Henschel
140 acres

Jacob Henschel
140 acres

NAMES OF OWNERS.	Number of Plats.	DESCRIPTION.	Section.	Township.	Range.	Acres.	Hearth-tax.	Value of Land.	Value of Improvements.	Value of Land and Improvements.
Maria E. Boone		E 1/2 NW 1/2 NE	16	27	13	140	1045	250	1295	
Sophia Conrad		E 1/2 NE	16	27	13	50	2190	650	2840	
Daniel M. Bygley		SW	16	27	13	40	850		850	
" " "		SW	16	27	13	36 37	535		2115	
Clara M. & Vera Bygley		pt SW SE	16	27	13	31	540		540	
" " " " "		pt NW	16	27	13	6	150		150	
Marney D. Harrison		SE	16	27	13	39 50	1080	1000	2800	
Coramanda Stalter		pt NW	16	27	13	72	1540	125		
" " "		pt SW SE	16	27	13	9	240		2300	
G. T. Bunk		pt NW NW	16	27	13	1 17	30	300	330	
Henry Boone		S 1/2 NE	16	27	13	36	1980	360	2330	
Christina Maribey		NW NE	16	27	13	140	1080	800	1880	
Sophia Mackey		E 1/2 E 1/2 NW	16	27	13	40	1050		1050	
Edward Rogger		N 1/2 E 1/2 SW	16	27	13	40	1060		1060	
Charles Westerman		NW 1/2 SW	16	27	13	80	2070	500	2570	

SECTION No. 16

Congressional Township No. 27, R. 13

SCALE—Forty rods to an inch, or ten rods to a space, Congress Land, which is one mile square for a section. Number of acres in this section, according to the United States Survey, 620

Value of Improvements
Value of Land and Improvements

280 1255
680 2840
500
2185
540
140
2800
2300
380
2330
1850
1060
1060
2570

