

Address

COUNTY, INDIANA, 1907.

Assessor's Plat-Book for Keokuk Township, No. 27

PLAT BOOK NO. 27, DISTRICT 1

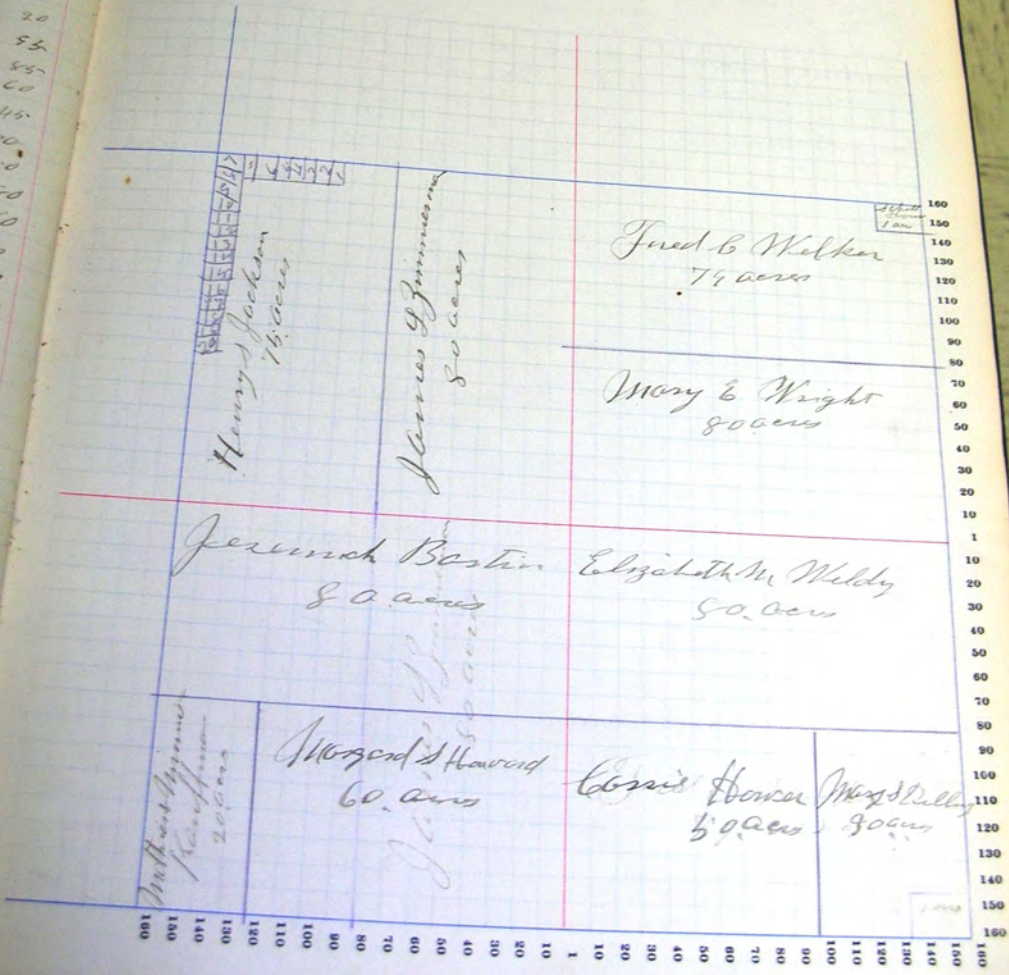
NAMES OF OWNERS.	Number of Plat.	DESCRIPTION.	Section.	Township.	Range.	Acres.	Municipality.	Value of Land.	Value of Improvements.	Value of Land and Improvements.
James G Zimmerman		E 1/2	21	27	13	50		2220	600	2820
Jud C Helker		pt N 1/2	21	27	13	75		2110	300	2410
Mary E Wright		S 1/2	21	27	13	80		2130	750	2880
Henry Jackson		pt NW 1/4	21	27	13	75		2075	700	2775
		pt Cassville 123144620						70		70
J B P H Osim		pt Cassville 14						10	10	20
Josiah F Plank		" " "						10	75	85
Riviera Mine		" " "						10	75	85
Elizabeth M Welby		N 1/2 SE	21	27	15	50		2110	150	2260
Cassie Hauer		pt S 1/2 SE	21	27	15	50		1320	325	1645
Mary S Dilling		pt SE	SE 21	27	15	50		770	300	1070
Mathias & Minnie Kauffman		with sec 21	21	27	15	20		500	260	760
Margaret C Howard		pt S 1/2 SE	21	27	15	60		1550	100	1650
Jeremiah Bostin		N 1/2 SE	21	27	15	80		2110	500	2610
Mary Jane Thomas		Cassville 18						20	80	100
Geo R & Reubin Pierce		" " "						20	80	100
Reubina Pierce		" " "						50	100	150

SECTION No. 21

Congressional Township No. 27, R. 13

SCALE—Forty rods to an inch, or ten rods to a space, Congress Land, which is one mile square for a section. Number of acres in this section, according to the United States Survey, 3600

Value of Land.	Value of Improvements.	Value of Land and Improvements.
200	600	2520
100	300	2440
50	700	2850
25	700	2775
		70
	10	20
	75	55
	75	85
150	2200	
225	1545	
100	1070	
60	750	
20	1680	
0	2610	
	100	
	20	
	150	



160  
150  
140  
130  
120  
110  
100  
90  
80  
70  
60  
50  
40  
30  
20  
10  
1  
10  
20  
30  
40  
50  
60  
70  
80  
90  
100  
110  
120  
130  
140  
150  
160



*Callaway*

COUNTY, INDIANA, 1907.

Assessor's Plat-Book for

*Kushlan*

Township, No. *27*

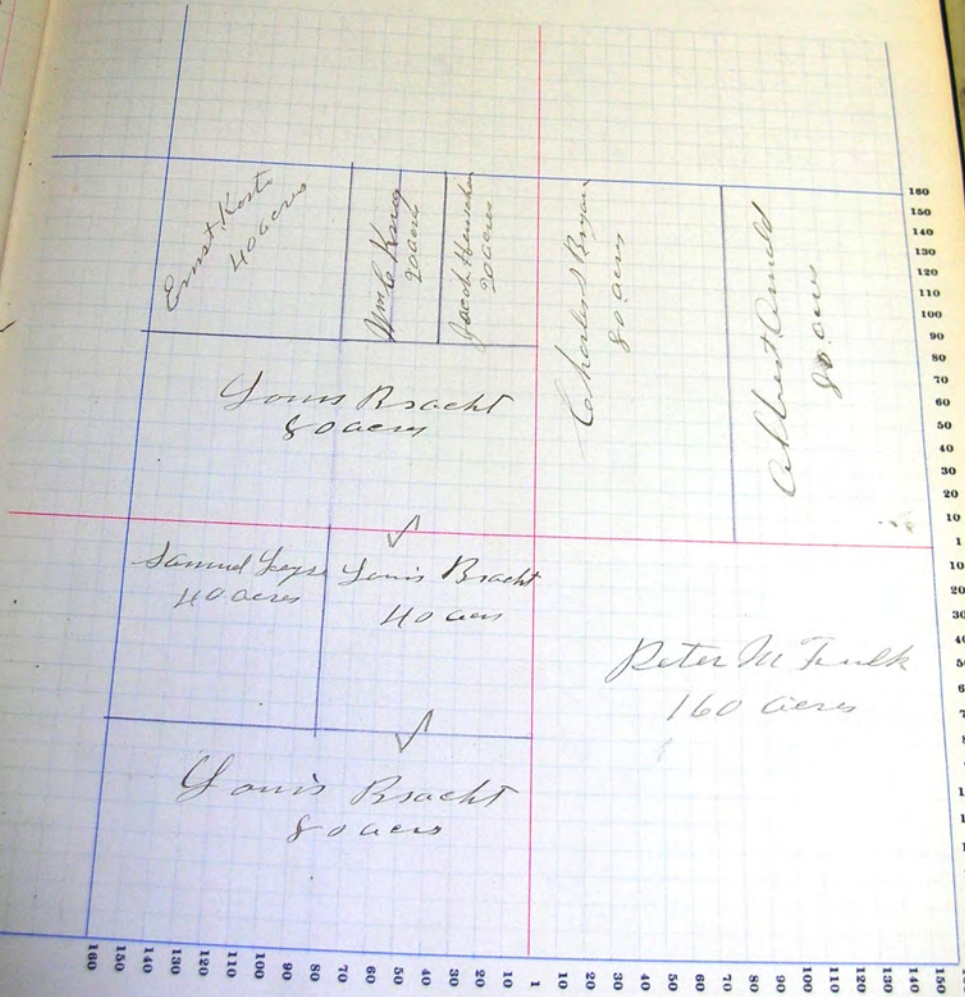
NAMES OF OWNERS	Number of Plat.	DESCRIPTION.	Acres.			Value of Land.	Value of Improvements.	Value of Lumber and Improvements.	
			Section.	Township.	Range.				
<i>Callaway, Oswald</i>		<i>E 1/2 NE</i>	<i>22</i>	<i>27</i>	<i>17</i>	<i>50</i>	<i>2200</i>	<i>700</i>	
<i>Ernst, Karl</i>		<i>W 1/2 N 1/2 NW</i>	<i>22</i>	<i>27</i>	<i>13</i>	<i>40</i>	<i>1045</i>	<i>1450</i>	<i>1450</i>
<i>Jim King</i>		<i>N 1/2 NE NW</i>	<i>22</i>	<i>27</i>	<i>17</i>	<i>20</i>	<i>550</i>		<i>550</i>
<i>Jacob Henrichsen</i>		<i>E 1/2 NE NW</i>	<i>22</i>	<i>27</i>	<i>13</i>	<i>20</i>	<i>550</i>		<i>550</i>
<i>Nomuel Jesse</i>		<i>N 1/2 NW SW</i>	<i>22</i>	<i>27</i>	<i>13</i>	<i>40</i>	<i>1045</i>	<i>1100</i>	<i>1445</i>
<i>Charles Bryan</i>		<i>W 1/2 NE</i>	<i>22</i>	<i>27</i>	<i>13</i>	<i>50</i>	<i>2200</i>	<i>600</i>	<i>2800</i>
<i>Peter M. Fink</i>		<i>- SE</i>	<i>22</i>	<i>27</i>	<i>17</i>	<i>160</i>	<i>4200</i>	<i>1000</i>	<i>5200</i>
<i>Jonis Bracht</i>		<i>S 1/2 NE NW</i>	<i>22</i>	<i>27</i>	<i>13</i>	<i>50</i>	<i>2100</i>		<i>675</i>
<i>do "</i>		<i>E 1/2 N 1/2 SW</i>	<i>22</i>	<i>27</i>	<i>13</i>	<i>40</i>	<i>1060</i>		
<i>do "</i>		<i>S 1/2 NW</i>	<i>22</i>	<i>27</i>	<i>13</i>	<i>50</i>	<i>2120</i>	<i>150</i>	<i>6100</i>

SECTION No. 27

Congressional Township No. 27, R. 13

SCALE—Forty rods to an inch, or ten rods to a space, Congress Land, which is one mile square for a section.  
 Number of acres in this section, according to the United States Survey, 640

Value of Improvements	Value of Land and Improvements
700	2800
400	1450
	550
	550
400	1440
200	2800
200	6200
75	
	600





Adams

COUNTY, INDIANA, 1907.

Assessor's Plat-Book for

Kirkland

Township, No. 21

SEE A. C. CLARK, PLAT BOOK #13, RECORDS.

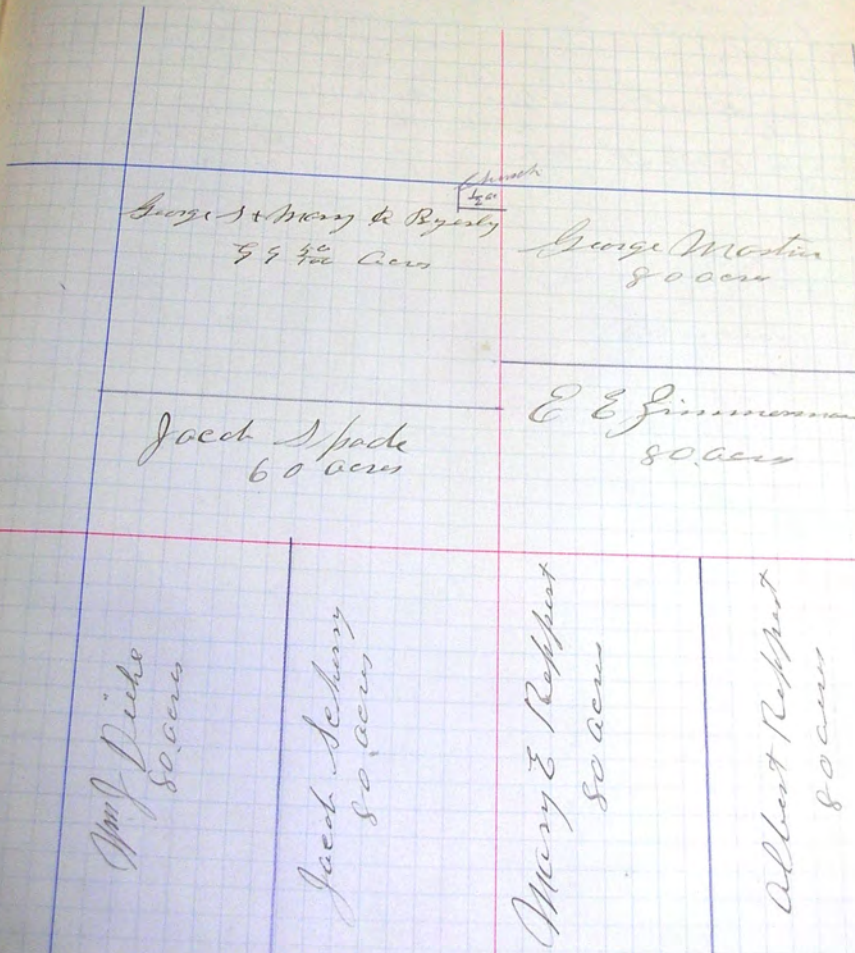
NAMES OF OWNERS.	Number of Pts.	DESCRIPTION.	Section.	Township.	Range.	Acres.	Hundredths.	Value of Land.	Value of Improvements.	Value of Land and Improvements.
Jacob Spode		pt 3/4 NW	23	27	13	140		1070	175-	
"		pt 3/4 NW	23	27	13	20		530		1775-
George Masten		N 1/2 NE	23	27	13	80		2150		2150
James & Mary Spode		rept NW	23	27	13	92	50	2675	800	3475-
Wm Duke		W 1/2 SW	23	27	13	80		2100	200	2300
Albert Reppert		E 1/2 SE	23	27	13	80		2150	350	2500
Mary E Reppert		W 1/2 SE	23	27	13	80		2150		2150-
E Zimmerman		S 1/2 NE	23	27	13	80		2220	900	3120
Jacob Schery		E 1/2 SW	23	27	13	80		2140	900	3040

SECTION No. 23

Congressional Township No. 27, R. 13

SCALE—Forty rods to an inch, or ten rods to a space, Congress Land, which is one mile square for a section.  
Number of acres in this section, according to the United States Survey, 6400

Value of improvements.	Value of Land and Improvements.
1775-	
2100	
3175.	
2300	
2540	
215-	
3120	
3040	



160  
150  
140  
130  
120  
110  
100  
90  
80  
70  
60  
50  
40  
30  
20  
10  
1  
10  
20  
30  
40  
50  
60  
70  
80  
90  
100  
110  
120  
130  
140  
150  
160

160  
150  
140  
130  
120  
110  
100  
90  
80  
70  
60  
50  
40  
30  
20  
10  
1  
10  
20  
30  
40  
50  
60  
70  
80  
90  
100  
110  
120  
130  
140  
150  
160



Adams

COUNTY, INDIANA, 1907.

Assessor's Plat-Book for

Kirkland

Township, No. 27

USE A CORRECT SLICK ROLL FOR INDEXING

NAMES OF OWNERS.	Number on Plat.	DESCRIPTION.	Section	Township	Range	Acres.	Hundredths	Value of Lands.	Value of Improve-ments.	Value of Lands and Improve-ments
Joseph Shoaf		N 1/2 1/4	24	27	13	160		2175	600	2775
Jacob Heller		pt E 1/2 SW	24	27	13	60		1550	600	2150
J. P. Covert		E 1/2 E 1/2 SE	24	27	13	40		1040		1040
J. H. Bright		SW	24	27	13	40		1400	250	1650
Wm. Gibby		N 1/2 NW	24	27	13	80		2150	650	2800
do		E 1/2 S 1/4 NW	24	27	13	40		1050		1050
George Crist		N 1/2 SE	24	27	13	50		2140	350	
do		N 1/2 E 1/2 SE	24	27	13	40		1075		3565
Joshua Bright		N 1/2 NW	24	27	13	50		2150	650	
do		W pt E 1/2 SW	24	27	13	20		550		3450

SECTION No. 24

Congressional Township No. 22, R. 13

SCALE—Forty rods to an inch, or ten rods to a space, Congress Land, which is one mile square for a section.  
Number of acres in this section, according to the United States Survey, 640

Value of Improvements.	Value of Land and Improvements.
600 4775-	
600 2180	
1000	
500 1380	
600 2830	
1000	
3565.	
3400	





*Adams*

COUNTY, INDIANA, 1907.

Assessor's Plat-Book for *Kirkland*

Township, No. *27*

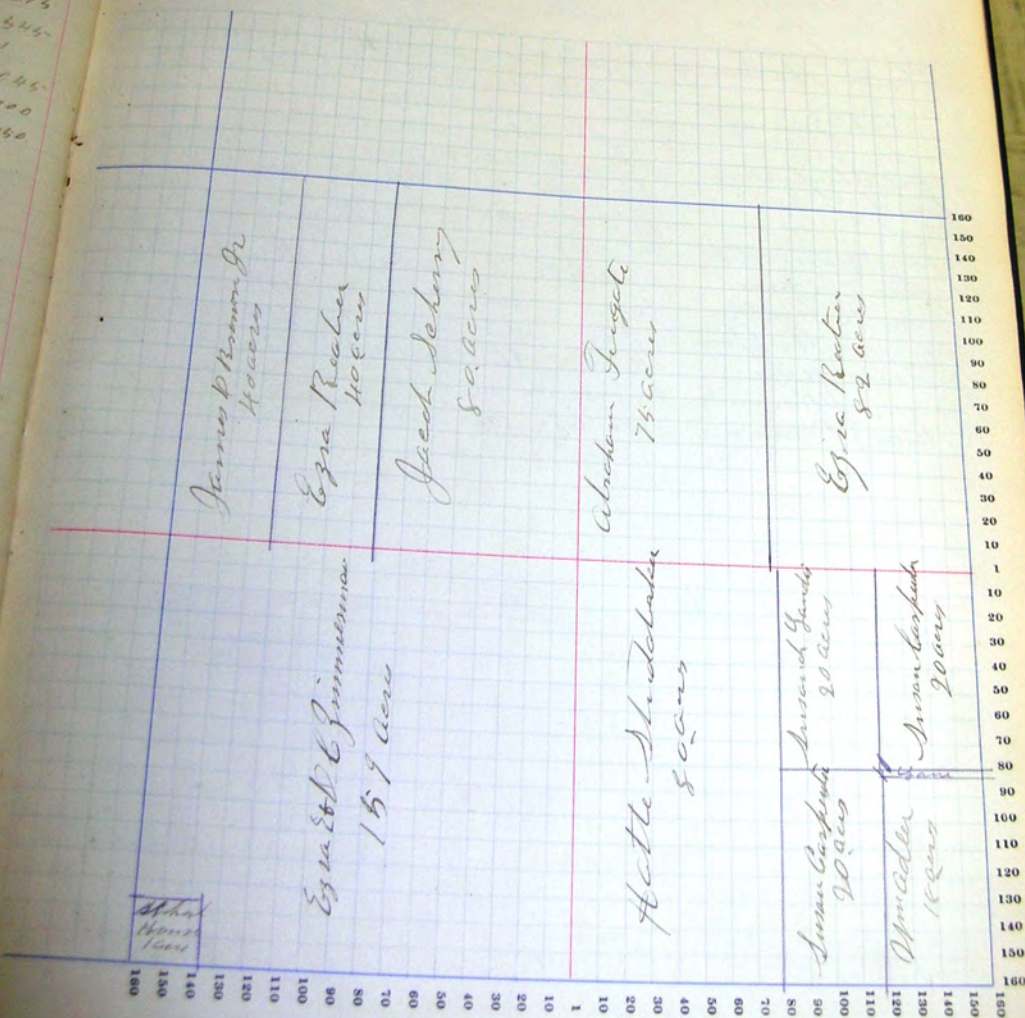
NAMES OF OWNERS.	Number on Plat.	DESCRIPTION.	Section.	Township.	Range.	Acres.	Hundredths.	Value of Land.	Value of Improvements.	Value of Land and Improvements.
<i>Abraham Fungate</i>		<i>N 1/2 NE</i>	<i>25</i>	<i>27</i>	<i>13</i>	<i>75</i>		<i>1950</i>	<i>275</i>	<i>2225</i>
<i>Jacob Schery</i>		<i>E 1/2 SW</i>	<i>25</i>	<i>27</i>	<i>13</i>	<i>80</i>		<i>2100</i>	<i>200</i>	<i>2300</i>
<i>Ezra Reber</i>		<i>E pt NE</i>	<i>24</i>	<i>27</i>	<i>13</i>	<i>82</i>		<i>2150</i>	<i>700</i>	<i>2850</i>
<i>do</i>		<i>E 1/2 E 1/2 NW</i>	<i>24</i>	<i>27</i>	<i>13</i>	<i>40</i>		<i>1080</i>		<i>3530</i>
<i>James O. Brown, Jr.</i>		<i>N 1/2 NW NW</i>	<i>25</i>	<i>27</i>	<i>13</i>	<i>40</i>		<i>1050</i>	<i>225</i>	<i>1275</i>
<i>Susannah Landis</i>		<i>N 1/2 NE SE</i>	<i>25</i>	<i>27</i>	<i>13</i>	<i>20</i>		<i>520</i>	<i>25</i>	<i>545</i>
<i>Amson Carpenter</i>		<i>E 1/2 NE SE</i>	<i>25</i>	<i>27</i>	<i>13</i>	<i>20</i>		<i>520</i>	<i>25</i>	<i>545</i>
<i>do</i>		<i>N 1/2 SE SE</i>	<i>24</i>	<i>27</i>	<i>13</i>	<i>20</i>		<i>500</i>		<i>1045</i>
<i>Ezra &amp; S. C. Zimmerman</i>		<i>SW</i>	<i>25</i>	<i>27</i>	<i>13</i>	<i>157</i>		<i>4200</i>	<i>500</i>	<i>4700</i>
<i>Wm. Cullin</i>		<i>pt E 1/2 SE SE</i>	<i>25</i>	<i>27</i>	<i>13</i>	<i>18</i>		<i>450</i>		<i>450</i>
<i>Heller Strubelchen</i>		<i>N 1/2 SE</i>	<i>25</i>	<i>27</i>	<i>13</i>	<i>80</i>		<i>2200</i>		

SECTION No. 24

Congressional Township No. 22, R. 13

SCALE—Forty rods to an inch, or ten rods to a space, Congress Land, which is one mile square for a section.  
 Number of acres in this section, according to the United States Survey, 600

Value of Improvements	Value of Land and Improvements
2225	
2300	
3930	
1275	
545	
1	
1045	
4700	
460	



160  
150  
140  
130  
120  
110  
100  
90  
80  
70  
60  
50  
40  
30  
20  
10  
1  
10  
20  
30  
40  
50  
60  
70  
80  
90  
100  
110  
120  
130  
140  
150  
160



COUNTY, INDIANA, 1907.

Assessor's Plat-Book for

*Kirkland*

Township, No. *21*

PLAT BOOK FOR 1907

NAMES OF OWNERS.	Number on Plat.	DESCRIPTION.	Section.	Township.	Range.	Acres.	Hardware.	Value of Land.	Value of Improvements.	Value of Land and Improvements.
<i>Elizabeth Hoover</i>		<i>N 1/2 S 12 NE</i>	<i>26</i>	<i>27</i>	<i>13</i>	<i>20</i>		<i>530</i>	<i>250</i>	
<i>H J Deibel</i>		<i>N 1/2 NE</i>	<i>26</i>	<i>27</i>	<i>13</i>	<i>80</i>		<i>2180</i>	<i>1450</i>	<i>780</i>
<i>W A Southain</i>		<i>N 1/2 E 1/2 NW</i>	<i>26</i>	<i>27</i>	<i>11</i>	<i>40</i>		<i>1070</i>	<i>200</i>	<i>1220</i>
<i>Henry Hildgenann</i>		<i>SW</i>	<i>26</i>	<i>27</i>	<i>13</i>	<i>40</i>		<i>1050</i>	<i>375</i>	<i>1425</i>
<i>Christian Hellmuth</i>		<i>W 1/2 NW S 10</i>	<i>26</i>	<i>27</i>	<i>13</i>	<i>21</i>		<i>285</i>	<i>400</i>	
<i>do</i>		<i>W 1/2 NW SW</i>	<i>26</i>	<i>27</i>	<i>13</i>	<i>10</i>		<i>360</i>		<i>955</i>
<i>Irvin J. Yancy</i>		<i>SE</i>	<i>26</i>	<i>27</i>	<i>13</i>	<i>110</i>		<i>1020</i>	<i>700</i>	
<i>do</i>		<i>W 1/2 SW</i>	<i>26</i>	<i>27</i>	<i>13</i>	<i>14.50</i>		<i>360</i>		<i>2080</i>
<i>Edrie Stantenting</i>		<i>W 1/2 SW</i>	<i>26</i>	<i>27</i>	<i>13</i>	<i>10</i>		<i>760</i>	<i>100</i>	<i>360</i>
<i>David J. Davine</i>		<i>W 1/2 SW</i>	<i>26</i>	<i>27</i>	<i>13</i>	<i>28</i>		<i>750</i>	<i>450</i>	
<i>David do</i>		<i>E 1/2 W 1/2 SW</i>	<i>26</i>	<i>27</i>	<i>13</i>	<i>20</i>		<i>660</i>		<i>1760</i>
<i>Walter Swain + Wife</i>		<i>W 1/2 SW</i>	<i>26</i>	<i>27</i>	<i>13</i>	<i>50</i>		<i>20</i>	<i>30</i>	<i>50</i>
<i>Jacob Orrie</i>		<i>W 1/2 E 1/2 SW</i>	<i>26</i>	<i>27</i>	<i>13</i>	<i>66</i>		<i>1830</i>	<i>550</i>	<i>2380</i>
<i>Peter W. Fulk</i>		<i>SW</i>	<i>26</i>	<i>27</i>	<i>13</i>	<i>40</i>		<i>1030</i>		<i>1030</i>
<i>James D. Hoffman</i>		<i>S 1/2 SE</i>	<i>26</i>	<i>27</i>	<i>13</i>	<i>80</i>		<i>2150</i>	<i>450</i>	<i>2600</i>
<i>Marcus J. Lee</i>		<i>N 1/2 SE</i>	<i>26</i>	<i>27</i>	<i>13</i>	<i>80</i>		<i>2200</i>	<i>650</i>	<i>2850</i>
<i>James D. Bravard</i>		<i>E 1/2 N 1/2 E 1/2 NE</i>	<i>26</i>	<i>27</i>	<i>13</i>	<i>20</i>		<i>625</i>	<i>650</i>	<i>1075</i>
<i>Rebecca J. Brown</i>		<i>S 1/2 E 1/2 NE</i>	<i>26</i>	<i>27</i>	<i>13</i>	<i>40</i>		<i>1080</i>		<i>1080</i>

SECTION No. 26

Congressional Township No. 22, R. 12

SCALE—Forty rods to an inch, or ten rods to a space, Congress Land, which is one mile square for a section. Number of acres in this section, according to the United States Survey, 660

Value of Improvements	Value of Land and Improvements
250	780
150	2630
200	1220
775	1425
40	
	945
2080	
360	
1760	
50	
2350	
1030	
600	
850	
75	
40	





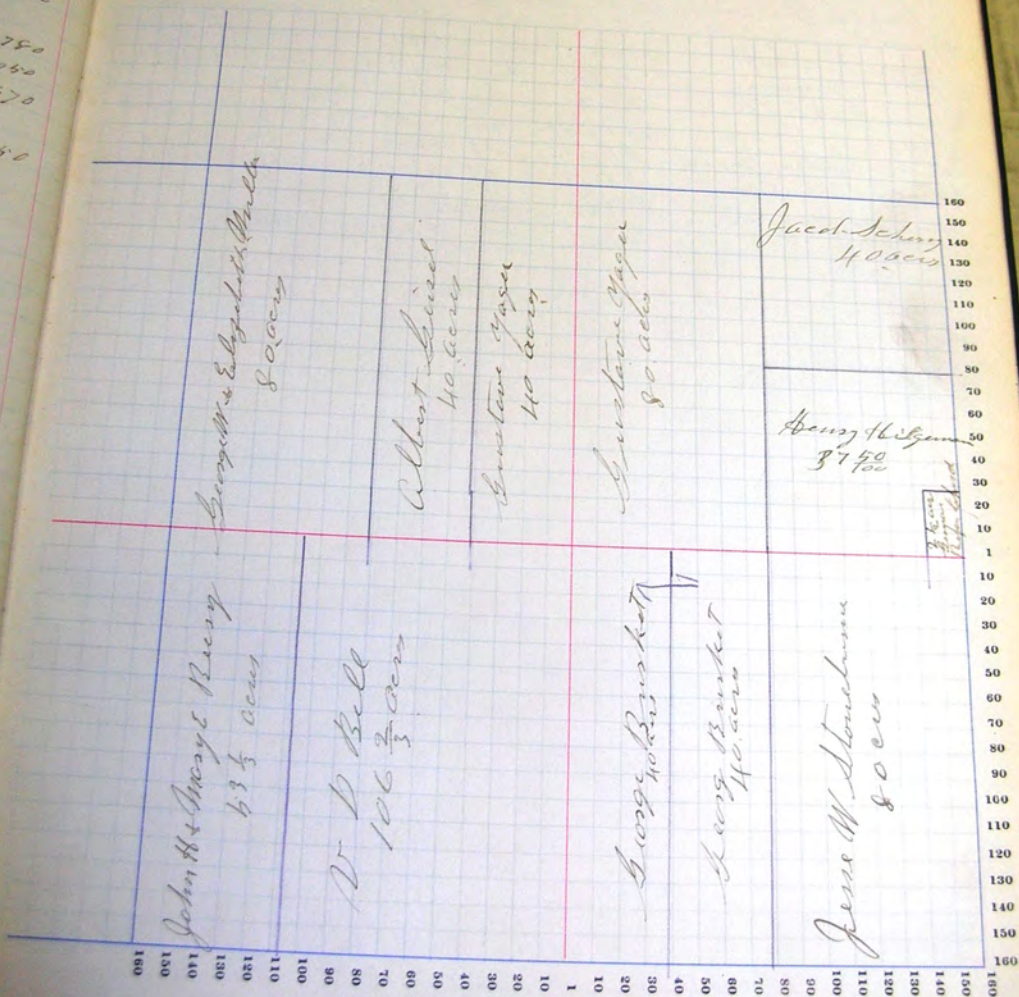


SECTION No. 27

Congressional Township No. 27, R. 17

SCALE—Forty rods to an inch, or ten rods to a space, Congress Land, which is one mile square for a section.  
 Number of acres in this section, according to the United States Survey,

Value of Improved Land	Value of Land and Improvements
140	2300
440	2000
170	1250
340	2450
560	3460
100	
3780	
1060	
570	
2540	



160  
150  
140  
130  
120  
110  
100  
90  
80  
70  
60  
50  
40  
30  
20  
10  
1  
10  
20  
30  
40  
50  
60  
70  
80  
90  
100  
110  
120  
130  
140  
150  
160