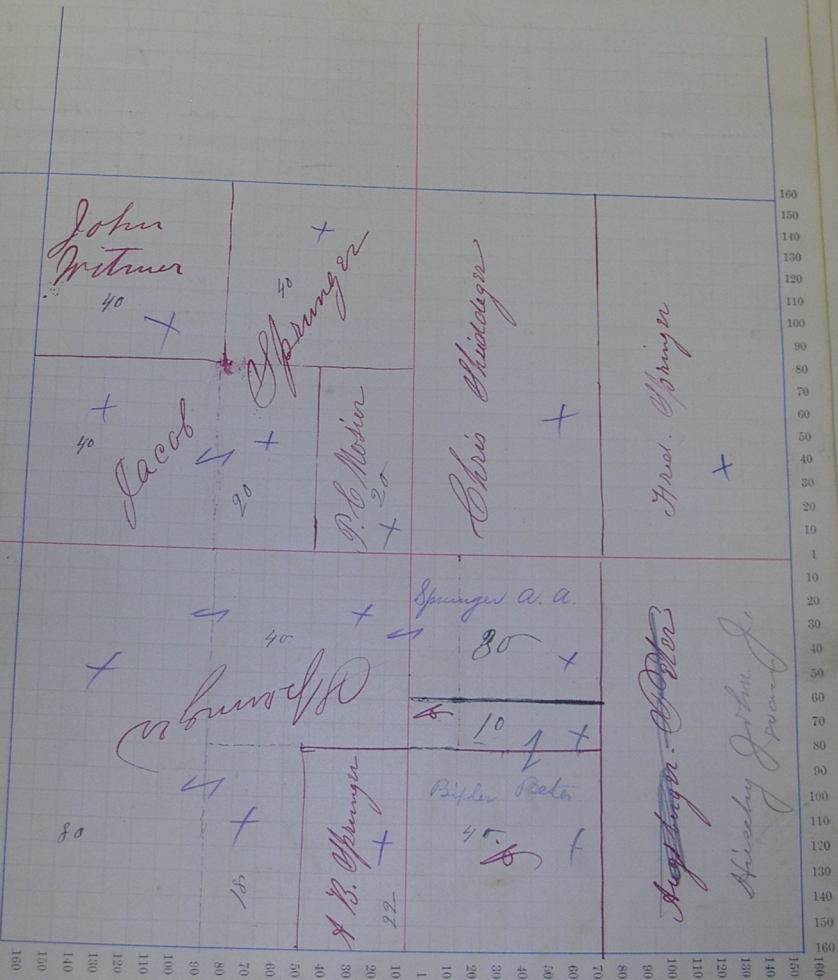


Assessor's Plat-Book for Mount Township, No. 29

NAMES OF OWNERS.	Number on Plat.	DESCRIPTION.		Section.	Township.	Range.	Acres.	Hundredths.	Value of Lands.	Value of Improve-ments.	Value of Lands and Improvements.
Springer Fred	29	E/2	N/2	29	26	14	80		720	80	800
Chideckis Chris	"	W/2	N/2	29	"	"	80		720	100	820
Springer Jacob	"	N/2	NW	"	"	"	40		360	100	460
Do	"	SW	NW	"	"	"	40		360		360
Witmer John	"	NW	NW	"	"	"	40		340	100	440
P. C. Moser	"	1/4 E/2	SE	"	"	"	20		180	40	220
Springer Jacob	"	W/2	SE	"	"	"	20		180	20	200
Springer A A	"	W/2	SW	"	"	"	80		720	400	1120
Do	"	N/2	SW	"	"	"	40		360	20	380
Do	"	W/2	SE	"	"	"	18		160	35	195
Do	"	SW	SE	"	"	"	40		360	150	510
Do	"	W/2 NW	SE	"	"	"	30		270		270
Do	"	1/4 NW	SE	"	"	"	10		90		90
Springer A B	"	E/2	SE	"	"	"	22		198	260	458
Springer A C	"	E/2	SE	"	"	"	80		720	160	880
							640		5378		

SCALE:—Forty rods to an inch, or ten rods to a space, Congress Land, which is one mile square for a section.
Number of acres in this section according to the UNITED STATES SURVEY



Adams

County, Indiana, 1880.

Assessor's Plat-Book for *Genoa*

Township, No. *80*

NAMES OF OWNERS.	Number on Plat.	DESCRIPTION.			Section.	Township.	Range.	Acres.	Hundredths.	Value of Lands.	Value of Improvements.	Value of Lands and Improvements.
<i>Keffe Saml.</i>	<i>30</i>	<i>N^o.</i>	<i>N^o</i>	<i>30</i>	<i>26</i>	<i>14</i>	<i>40</i>		<i>360</i>	<i>110</i>	<i>470</i>	
<i>Do</i>	<i>..</i>	<i>N^o</i>	<i>N^o</i>	<i>..</i>	<i>..</i>	<i>..</i>	<i>20</i>		<i>180</i>		<i>180</i>	
<i>Beer Chris</i>	<i>..</i>	<i>E¹/₂</i>	<i>N^o</i>	<i>..</i>	<i>..</i>	<i>..</i>	<i>20</i>		<i>180</i>		<i>180</i>	
<i>Houlton David</i>	<i>..</i>	<i>E¹/₂</i>	<i>N^o</i>	<i>..</i>	<i>..</i>	<i>..</i>	<i>80</i>		<i>560</i>	<i>20</i>	<i>580</i>	
<i>Fox Michael</i>	<i>..</i>	<i>W¹/₂</i>	<i>N^o</i>	<i>..</i>	<i>..</i>	<i>..</i>	<i>80</i>		<i>640</i>	<i>140</i>	<i>780</i>	
<i>Muenschwandt P. C.</i>	<i>..</i>		<i>E¹/₂</i>	<i>..</i>	<i>..</i>	<i>..</i>	<i>160</i>		<i>1440</i>	<i>500</i>	<i>1940</i>	
<i>Ellenbogen Axel</i>	<i>..</i>	<i>E¹/₂</i>	<i>N^o</i>	<i>..</i>	<i>..</i>	<i>..</i>	<i>80</i>		<i>720</i>	<i>160</i>	<i>880</i>	
<i>Leichty Chris J.</i>	<i>..</i>	<i>N^o.</i>	<i>N^o</i>	<i>..</i>	<i>..</i>	<i>..</i>	<i>40</i>		<i>360</i>	<i>100</i>	<i>460</i>	
<i>Do</i>	<i>..</i>	<i>E¹/₂</i>	<i>N^o</i>	<i>..</i>	<i>..</i>	<i>..</i>	<i>20</i>		<i>180</i>		<i>180</i>	
<i>Boughman Chris</i>	<i>..</i>		<i>N^o</i>	<i>..</i>	<i>..</i>	<i>..</i>	<i>20</i>		<i>180</i>	<i>20</i>	<i>200</i>	
<i>Do</i>	<i>..</i>	<i>W¹/₂</i>	<i>N^o</i>	<i>..</i>	<i>..</i>	<i>..</i>	<i>80</i>		<i>720</i>	<i>300</i>	<i>1020</i>	
<i>Beer Chris</i>	<i>..</i>		<i>N^o</i>	<i>..</i>	<i>..</i>	<i>..</i>	<i>80</i>		<i>720</i>	<i>300</i>	<i>1020</i>	
							<i>640</i>		<i>5378</i>			

Adams

County, Indiana, 1880.

Assessor's Plat-Book for

Yours

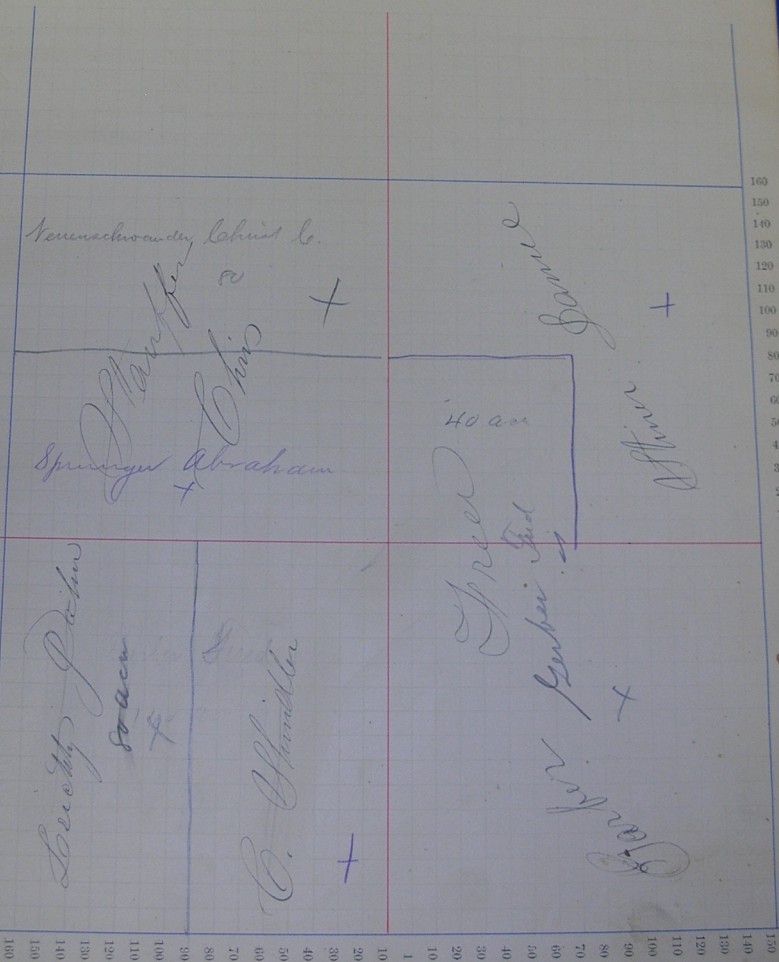
Township, No. *9*

NAMES OF OWNERS.	Number on Plat.	DESCRIPTION.	Section.	Township.	Range.	Acres.	Hundredths.	Value of Lands.	Value of Improve-ments.	Value of Lands and Improvements.
<i>Steiner Daniel</i>	<i>31</i>	<i>E/2 NE</i>	<i>31</i>	<i>26</i>	<i>14</i>	<i>80</i>		<i>720</i>	<i>350</i>	<i>1100</i>
<i>Do</i>	<i>"</i>	<i>N/2 NE</i>	<i>"</i>	<i>"</i>	<i>"</i>	<i>40</i>		<i>360</i>	<i>20</i>	<i>380</i>
<i>Stauffer Chris</i>	<i>"</i>	<i>N/2 NW</i>	<i>"</i>	<i>"</i>	<i>"</i>	<i>160</i>		<i>1440</i>	<i>400</i>	<i>1840</i>
<i>Lochty John</i>	<i>"</i>	<i>W/2 SW</i>	<i>"</i>	<i>"</i>	<i>"</i>	<i>80</i>		<i>720</i>	<i>150</i>	<i>900</i>
<i>Shindler Chris</i>	<i>"</i>	<i>E/2 SW</i>	<i>"</i>	<i>"</i>	<i>"</i>	<i>80</i>		<i>720</i>	<i>350</i>	<i>1170</i>
<i>Garber Fred</i>	<i>"</i>	<i>SE</i>	<i>"</i>	<i>"</i>	<i>"</i>	<i>160</i>		<i>1440</i>	<i>60</i>	<i>1500</i>
<i>Do</i>	<i>"</i>	<i>SW</i>	<i>"</i>	<i>"</i>	<i>"</i>	<i>40</i>		<i>360</i>		<i>360</i>
						<i>640</i>		<i>5760</i>		

Section No. 31

Congressional Township No. 26, N., R. 14 E.

SCALE:—Forty rods to an inch, or ten rods to a space, Congress Land, which is one mile square for a section.
Number of acres in this section according to the UNITED STATES Survey



Adams

County, Indiana, 1880.

Assessor's Plat-Book for *Yours*

Township, No. *82*

NAMES OF OWNERS.	Number on Plat.	DESCRIPTION.			Section.	Township.	Range.	Acres.	Hundredths.	Value of Lands.	Value of Improvements.	Value of Lands and Improvements.
<i>Hooker Jacob.</i>	<i>32</i>	<i>SE.</i>	<i>NE</i>	<i>32</i>	<i>26</i>	<i>14</i>	<i>40</i>		<i>360</i>	<i>80</i>	<i>440</i>	
<i>Schwaner Saml.</i>	<i>..</i>	<i>NE</i>	<i>NE</i>	<i>..</i>	<i>..</i>	<i>..</i>	<i>40</i>		<i>360</i>	<i>20</i>	<i>380</i>	
<i>Do</i>	<i>..</i>	<i>W.</i>	<i>NE</i>	<i>..</i>	<i>..</i>	<i>..</i>	<i>80</i>		<i>800</i>	<i>700</i>	<i>1500</i>	
<i>Noser A. W.</i>	<i>..</i>	<i>NE</i>	<i>NW</i>	<i>..</i>	<i>..</i>	<i>..</i>	<i>40</i>		<i>360</i>	<i>20</i>	<i>380</i>	
<i>Do</i>	<i>..</i>	<i>SE.</i>	<i>NW</i>	<i>..</i>	<i>..</i>	<i>..</i>	<i>80</i>		<i>800</i>	<i>400</i>	<i>1200</i>	
<i>Noser Peter</i>	<i>..</i>	<i>NW.</i>	<i>NW</i>	<i>..</i>	<i>..</i>	<i>..</i>	<i>40</i>		<i>360</i>	<i>100</i>	<i>460</i>	
<i>Kreuschwandl. Christ.</i>	<i>..</i>		<i>SE</i>	<i>..</i>	<i>..</i>	<i>..</i>	<i>160</i>		<i>1600</i>	<i>400</i>	<i>2000</i>	
<i>Shannon C. B.</i>	<i>..</i>	<i>W.</i>	<i>SE</i>	<i>..</i>	<i>..</i>	<i>..</i>	<i>80</i>		<i>800</i>	<i>400</i>	<i>1200</i>	
<i>Strichtz Emanuel</i>	<i>..</i>	<i>SE</i>	<i>SE</i>	<i>..</i>	<i>..</i>	<i>..</i>	<i>80</i>		<i>800</i>	<i>400</i>	<i>1200</i>	
							<i>640</i>		<i>6240</i>			

Section No. 22

Congressional Township No. 26, N., R. 14 E.

SCALE:—Forty rods to an inch, or ten rods to a space, Congress Land, which is one mile square for a section.
Number of acres in this section according to the UNITED STATES Survey

~~W. H. Allen~~
Kans. Sch. Land
40
F

~~Mason~~
40
Z
more abt 2 in

~~Lehman Samuel~~
Lehman Samuel
160
~~John~~

Abe M
20

C. B. Menschmann
160
+

C. B. Haman
+

Emmanuel Society
+

160 150 140 130 120 110 100 90 80 70 60 50 40 30 20 10 1 10 20 30 40 50 60 70 80 90 100 110 120 130 140 150 160