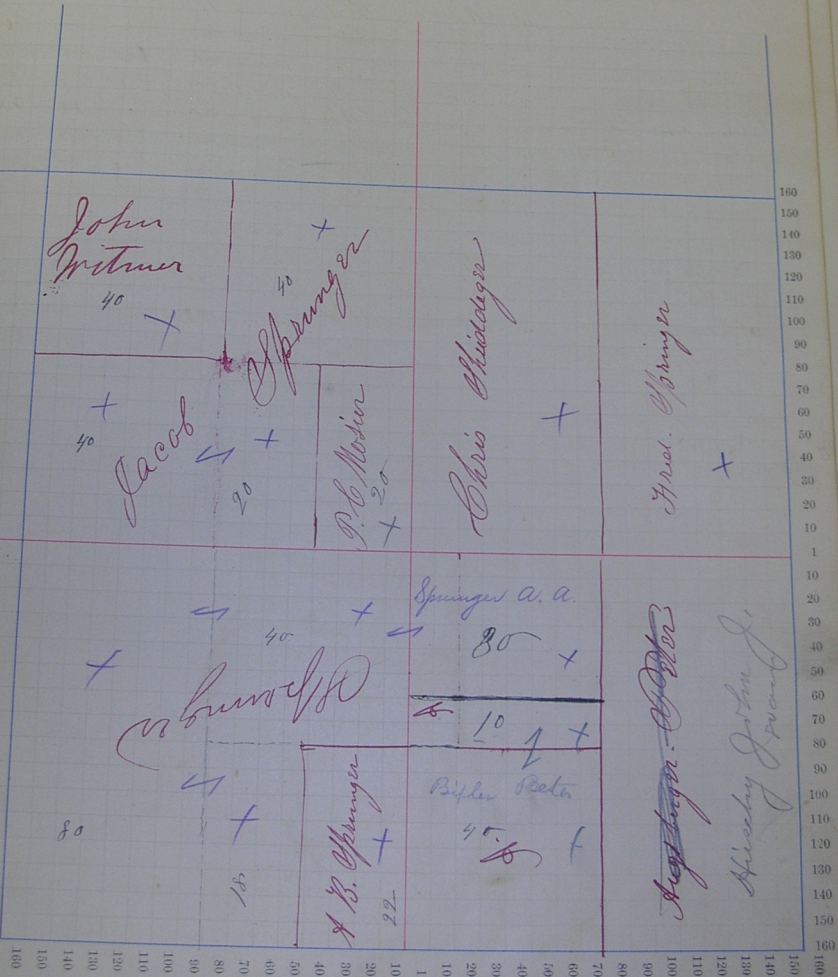


Assessor's Plat-Book for Mount Township, No. 29

NAMES OF OWNERS.	Number on Plat.	DESCRIPTION.		Section.	Township.	Range.	Acres.	Hundredths.	Value of Lands.	Value of Improve-ments.	Value of Lands and Improvements.
Springer Fred	29	E <sup>1</sup> / <sub>2</sub>	N <sup>1</sup> / <sub>2</sub>	29	26	14	80		720	80	800
Chideckis Chris	"	W <sup>1</sup> / <sub>2</sub>	N <sup>1</sup> / <sub>2</sub>	29	"	"	80		720	100	820
Springer Jacob	"	N <sup>1</sup> / <sub>2</sub>	NW	"	"	"	40		360	100	460
Do	"	E <sup>1</sup> / <sub>2</sub>	NW	"	"	"	40		360		360
Witmer John	"	NW	NW	"	"	"	40		340	100	440
P. C. Moser	"	E <sup>1</sup> / <sub>2</sub>	SE	"	"	"	20		180	40	220
Springer Jacob	"	W <sup>1</sup> / <sub>2</sub>	SE	"	"	"	20		180	20	200
Springer A A	"	W <sup>1</sup> / <sub>2</sub>	SW	"	"	"	80		720	400	1120
Do	"	N <sup>1</sup> / <sub>2</sub>	SW	"	"	"	40		360	20	380
Do	"	W <sup>1</sup> / <sub>2</sub>	SE	"	"	"	18		160	35	195
Do	"	SW	SE	"	"	"	40		360	150	510
Do	"	W <sup>1</sup> / <sub>2</sub>	NW	SE	"	"	30		270		270
Do	"	E <sup>1</sup> / <sub>2</sub>	NW	SE	"	"	10		90		90
Springer A B	"	E <sup>1</sup> / <sub>2</sub>	SE	SW	"	"	<del>20</del>		188	260	458
Springer A C	"	E <sup>1</sup> / <sub>2</sub>	SE	"	"	"	80		720	160	880
							640		5378		

SCALE:—Forty rods to an inch, or ten rods to a space, Congress Land, which is one mile square for a section.  
Number of acres in this section according to the UNITED STATES SURVEY



*Adams*

County, Indiana, 1880.

Assessor's Plat-Book for *Genoa*

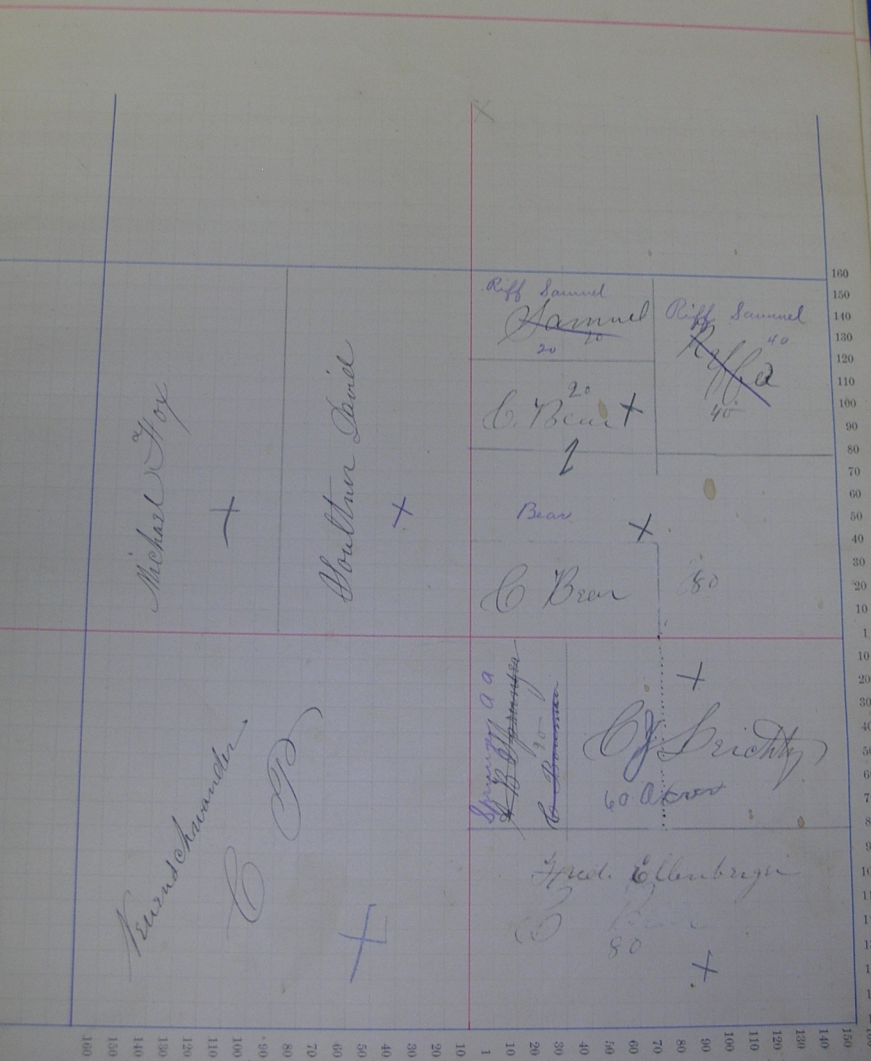
Township, No. *80*

NAMES OF OWNERS.	Number on Plat.	DESCRIPTION.			Section.	Township.	Range.	Acres.	Hundredths.	Value of Lands.	Value of Improvements.	Value of Lands and Improvements.
<i>Keffe Saml.</i>	<i>30</i>	<i>N<sup>o</sup>.</i>	<i>N<sup>o</sup></i>	<i>30</i>	<i>26</i>	<i>14</i>	<i>40</i>		<i>360</i>	<i>110</i>	<i>470</i>	
<i>Do</i>	<i>..</i>	<i>N<sup>o</sup></i>	<i>N<sup>o</sup></i>	<i>..</i>	<i>..</i>	<i>..</i>	<i>20</i>		<i>180</i>		<i>180</i>	
<i>Beer Chris</i>	<i>..</i>	<i>E<sup>o</sup></i>	<i>N<sup>o</sup></i>	<i>..</i>	<i>..</i>	<i>..</i>	<i>20</i>		<i>180</i>		<i>180</i>	
<i>Houlton David</i>	<i>..</i>	<i>E<sup>o</sup></i>	<i>N<sup>o</sup></i>	<i>..</i>	<i>..</i>	<i>..</i>	<i>80</i>		<i>560</i>	<i>20</i>	<i>580</i>	
<i>Fox Michael</i>	<i>..</i>	<i>W<sup>o</sup></i>	<i>N<sup>o</sup></i>	<i>..</i>	<i>..</i>	<i>..</i>	<i>80</i>		<i>640</i>	<i>140</i>	<i>780</i>	
<i>Muenschwandt P. C.</i>	<i>..</i>		<i>E<sup>o</sup></i>	<i>..</i>	<i>..</i>	<i>..</i>	<i>160</i>		<i>1440</i>	<i>500</i>	<i>1940</i>	
<i>Ellenbogen Axel</i>	<i>..</i>	<i>E<sup>o</sup></i>	<i>E<sup>o</sup></i>	<i>..</i>	<i>..</i>	<i>..</i>	<i>80</i>		<i>720</i>	<i>160</i>	<i>880</i>	
<i>Leichty Chris J.</i>	<i>..</i>	<i>N<sup>o</sup>.</i>	<i>E<sup>o</sup></i>	<i>..</i>	<i>..</i>	<i>..</i>	<i>40</i>		<i>360</i>	<i>100</i>	<i>460</i>	
<i>Do</i>	<i>..</i>	<i>E<sup>o</sup></i>	<i>N<sup>o</sup></i>	<i>..</i>	<i>..</i>	<i>..</i>	<i>20</i>		<i>180</i>		<i>180</i>	
<i>Houghman Chris</i>	<i>..</i>		<i>N<sup>o</sup></i>	<i>..</i>	<i>..</i>	<i>..</i>	<i>20</i>		<i>180</i>	<i>20</i>	<i>200</i>	
<i>Do</i>	<i>..</i>	<i>W<sup>o</sup></i>	<i>N<sup>o</sup></i>	<i>..</i>	<i>..</i>	<i>..</i>	<i>80</i>		<i>720</i>	<i>300</i>	<i>1020</i>	
<i>Beer Chris</i>	<i>..</i>		<i>N<sup>o</sup>.</i>	<i>..</i>	<i>..</i>	<i>..</i>	<i>80</i>		<i>720</i>	<i>300</i>	<i>1020</i>	
							<i>640</i>		<i>5378</i>			

Section No. 80

Congressional Township No. 26, N., R. 14 E.

SCALE—Forty rods to an inch, or ten rods to a space, Congress Land, which is one mile square for a section.  
 Number of acres in this section according to the UNITED STATES SURVEY



*Adams*

County, Indiana, 1880.

Assessor's Plat-Book for

*Yonkers*

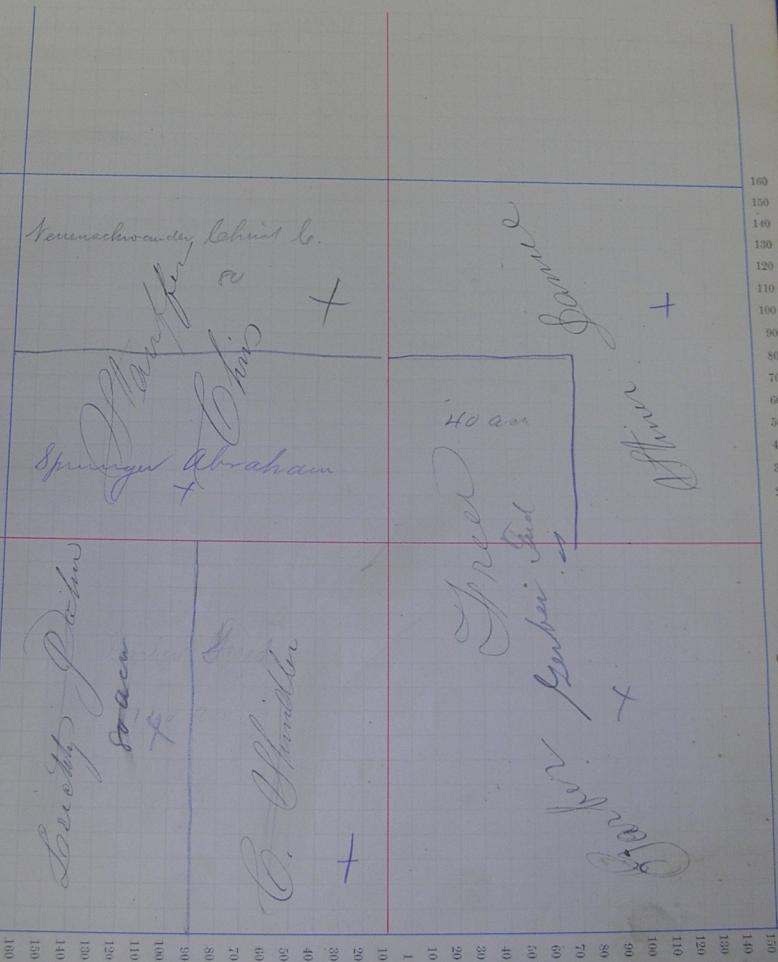
Township, No. *9*

NAMES OF OWNERS.	Number on Plat.	DESCRIPTION.	Section.	Township.	Range.	Acres.	Hundredths.	Value of	Value of	Value of
								Lands.	Improve-ments.	Lands and Improvements.
<i>Steiner Daniel</i>	<i>31</i>	<i>E/2 NE</i>	<i>31</i>	<i>26</i>	<i>14</i>	<i>80</i>	<i>720</i>	<i>350</i>	<i>1100</i>	
<i>Do</i>	<i>"</i>	<i>N/2 NE</i>	<i>"</i>	<i>"</i>	<i>"</i>	<i>40</i>	<i>360</i>	<i>20</i>	<i>380</i>	
<i>Stauffer Chris</i>	<i>"</i>	<i>N/2 NW</i>	<i>"</i>	<i>"</i>	<i>"</i>	<i>160</i>	<i>1440</i>	<i>400</i>	<i>1840</i>	
<i>Lochty John</i>	<i>"</i>	<i>W/2 SW</i>	<i>"</i>	<i>"</i>	<i>"</i>	<i>80</i>	<i>720</i>	<i>150</i>	<i>870</i>	
<i>Shindler Chris</i>	<i>"</i>	<i>E/2 SW</i>	<i>"</i>	<i>"</i>	<i>"</i>	<i>80</i>	<i>720</i>	<i>350</i>	<i>1070</i>	
<i>Garber Fred</i>	<i>"</i>	<i>SE</i>	<i>"</i>	<i>"</i>	<i>"</i>	<i>160</i>	<i>1440</i>	<i>60</i>	<i>1500</i>	
<i>Do</i>	<i>"</i>	<i>SW</i>	<i>"</i>	<i>"</i>	<i>"</i>	<i>40</i>	<i>360</i>		<i>360</i>	
						<i>640</i>	<i>5760</i>			

Section No. 31

Congressional Township No. 26, N., R. 14 E.

SCALE:—Forty rods to an inch, or ten rods to a space, Congress Land, which is one mile square for a section.  
Number of acres in this section according to the UNITED STATES Survey



Adams

County, Indiana, 1880.

Assessor's Plat-Book for *Yours*

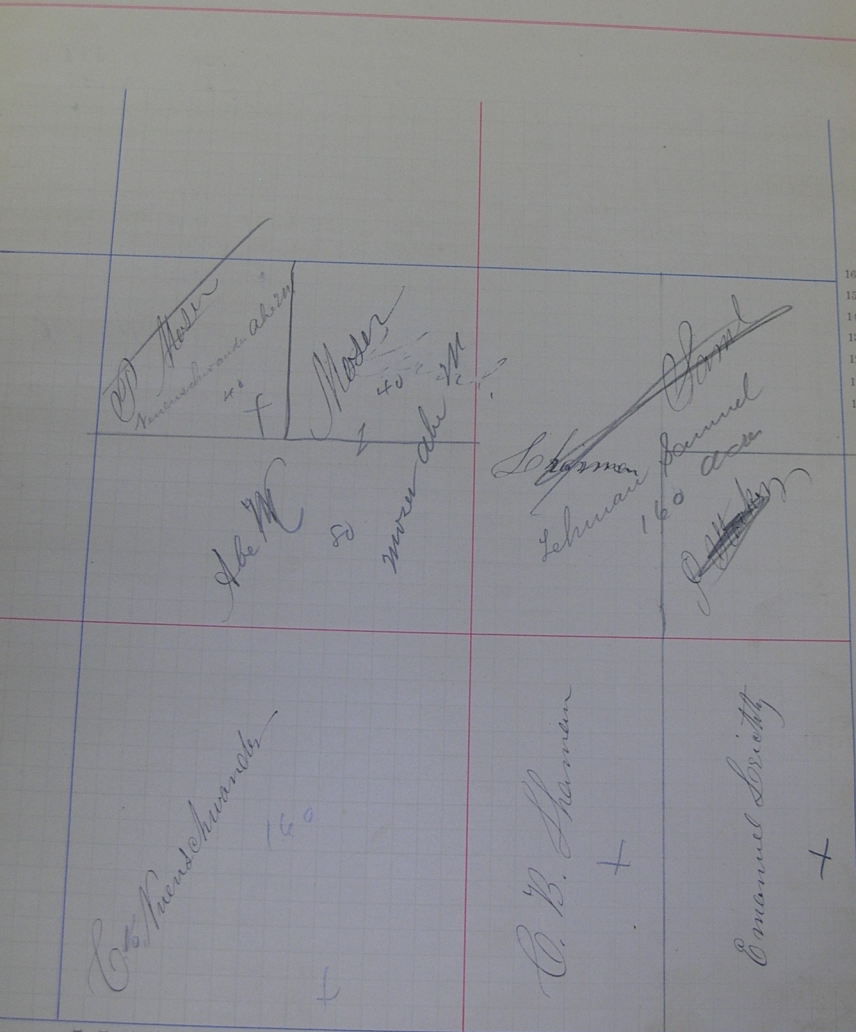
Township, No. *82*

NAMES OF OWNERS.	Number on Plat.	DESCRIPTION.			Section.	Township.	Range.	Acres.	Hundredths.	Value of Lands.	Value of Improvements.	Value of Lands and Improvements.
Hooker Jacob.	32	SE.	NE	32	26	14	40		360	80	440	
Schwaner Saml.	..	NE	NE	..	..	..	40		360	20	380	
Do	..	W.	NE	..	..	..	80		800	700	1500	
Noser A. W.	..	NE	NW	..	..	..	40		360	20	380	
Do	..	SE.	NW	..	..	..	80		800	400	1200	
Noser Peter	..	NW.	NW	..	..	..	40		360	100	460	
Kreuschwandl. Christ.	..		SE	..	..	..	160		1600	400	2000	
Shannon C. B.	..	W.	SE	..	..	..	80		800	400	1200	
Strichtz Emanuel	..	SE	SE	..	..	..	80		800	400	1200	
							640		6240			

Section No. 22

Congressional Township No. 26, N., R. 14 E.

SCALE:—Forty rods to an inch, or ten rods to a space, Congress Land, which is one mile square for a section.  
Number of acres in this section according to the UNITED STATES Survey



160  
150  
140  
130  
120  
110  
100  
90  
80  
70  
60  
50  
40  
30  
20  
10  
1  
10  
20  
30  
40  
50  
60  
70  
80  
90  
100  
110  
120  
130  
140  
150  
160