

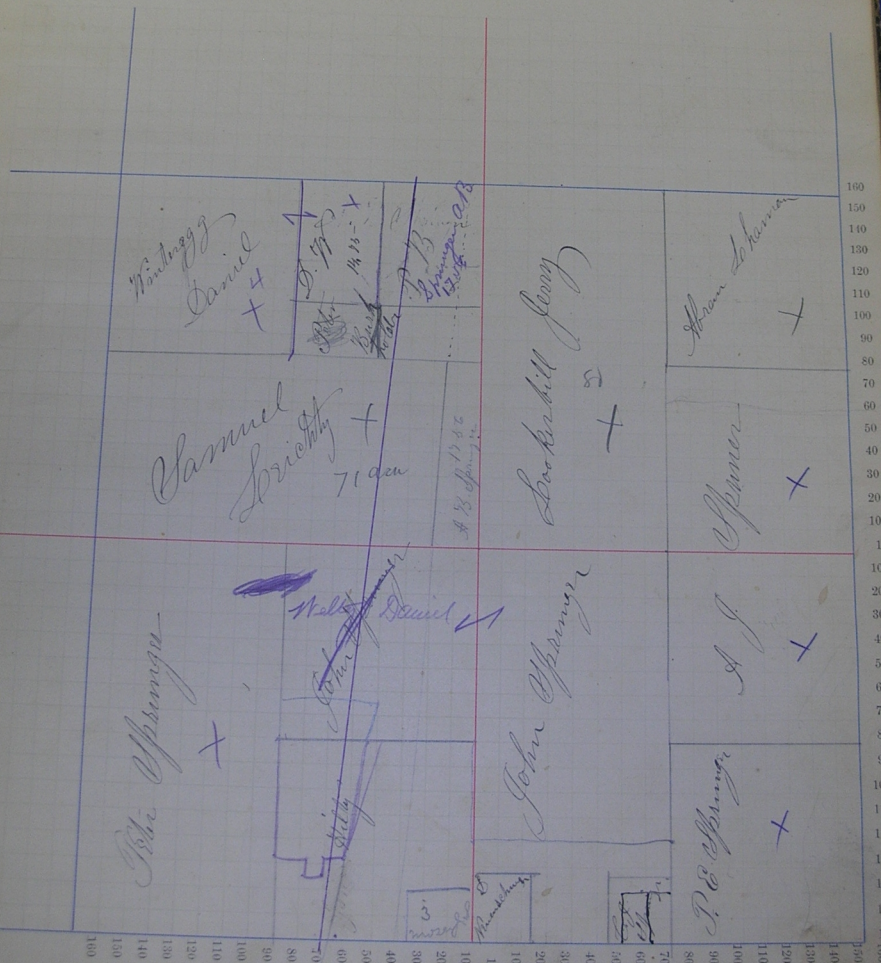
NAMES OF OWNERS.	Number on Plat.	DESCRIPTION.	Section.	Township.	Range.	Acres.	Hundredths.	Value of Lands.	Value of Improvements.	Value of Lands and Improvements.	
Shaman Abram	33	N ^o	N ^o	33	26	14	40	360	40	400	
Lockhill Jerry	"	W ²	N ^o	"	"	"	80	720	200	920	
Swartzby Samuel	"	E ¹ pt W ²	N ^o	"	"	"	71	640	120	760	
Hentzberg Daniel	"	W ²	N ^o	"	"	"	45	360	100	460	
Do	"	W ¹ pt N ^o W ²	N ^o	"	"	"	14	75	120	120	
Spungers A B.	"	W ¹ pt E ¹ pt N ^o W ²	N ^o	"	"	"	18	56	165	20	155
Bushholder Peter	"	W ¹ pt E ¹	N ^o	"	"	"	12	15	120	20	140
Spungers Peter	"	W ²	E ¹ W ²	"	"	"	80	880	500	1380	
Spungers John	"	N ^o	E ¹ W ²	"	"	"	40	400	40	440	
Kelly John	"	E ¹	E ¹ W ²	"	"	"	30	360	200	560	
Spungers John	"	W ¹ pt W ²	E ¹ E ²	"	"	"	48	780	600	1380	
Kruschschmidt Janl.	"	W ¹ pt E ¹ W ² E ²	E ¹	"	"	"	1	.20	150	170	
Spungers G. J.	"	W ¹ pt E ¹ W ² E ²	E ¹	"	"	"	+				
" P. E.	"	E ¹ E ²	E ¹ E ²	"	"	"	40	400	100	500	
Spungers A. J.	"	N ^o	E ¹ E ²	"	"	"	40	360	100	460	
Do	"	E ¹	N ^o	"	"	"	40	360	40	400	
Bushholder Peter	"	W ¹ E ¹ W ² W ³	W ²	23	"	"	12	15	120	20	140
Bro. Samuel	"	W ¹ pt E ¹ W ² E ²	E ¹	"	"	"	3	30	40	70	
							61	6206			

Section No. 53

Congressional Township No. 26, N., R. 14 E.

SCALE—Forty rods to an inch, or ten rods to a space, Congress Land, which is one mile square for a section.
 Number of acres in this section according to the UNITED STATES SURVEY

1682 500 12
 1600
 800



100 110 120 130 140 150 160

Adams

County, Indiana, 1880.

Assessor's Plat-Book for

Groves

Township, No. 89

NAMES OF OWNERS.	Number on Plat.	DESCRIPTION.	Section.	Township.	Range.	Acres.	Hundredths.	Value of Lands.	Value of Improvements.	Value of Lands and Improvements.
Waters G W	3/4	N/2 NE	34	26	14	80		720	100	820
Crawford G & J.	"	W/2 NE	"	"	"	80		720		720
" Josiah	"	E/2 NW	"	"	"	80		720		720
Shaman Abe	"	NW NW	"	"	"	40		360		360
Hamer John M	"	SW NW	"	"	"	40		360		360
Gacher Daniel	"	W/2 SW	"	"	"	80		800	120	920
Maslin Peter	"	E/2 SW	"	"	"	80		800	140	940
Shrungen David	"	W/2 SE	"	"	"	80		760	280	1040
Smith Saml	"	E/2 SE	"	"	"	80		720	80	800
						640		5960		

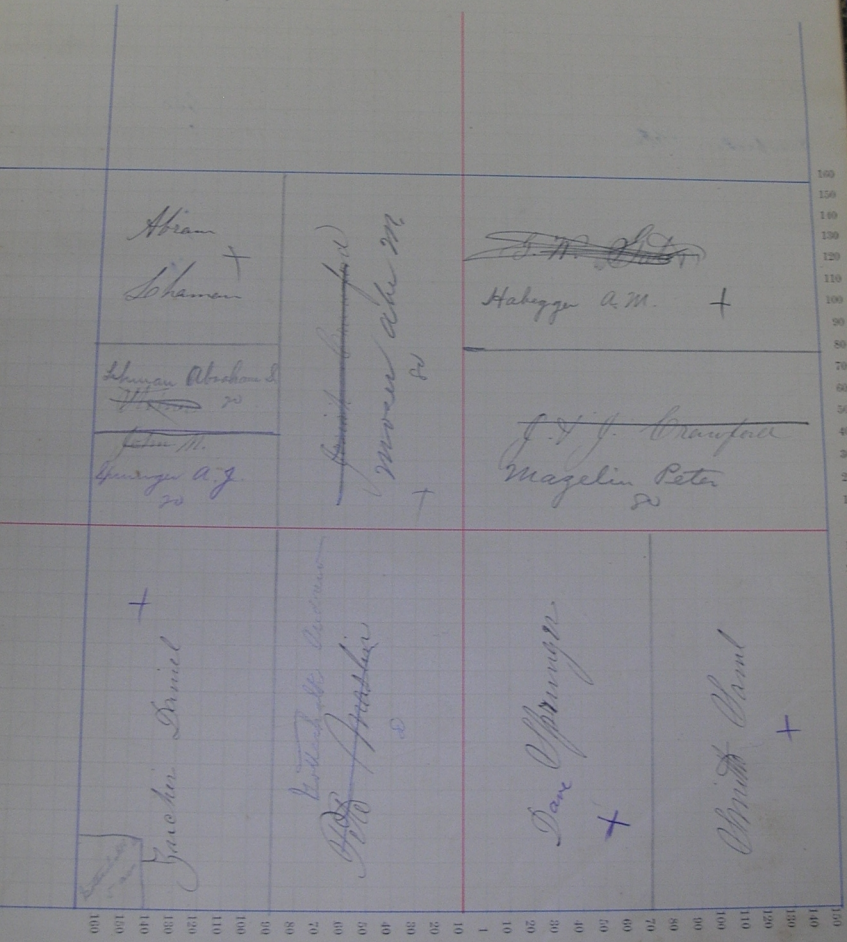
Section No. 34

Congressional Township No. 26 N., R. 14 E.

SCALE.—Forty rods to an inch, or ten rods to a space, Congress Land, which is one mile square for a section.
 Number of acres in this section according to the UNITED STATES Survey

160
 5
 900 30

8



Abram +
 Shamou

~~J.M. +~~
 Habegge A.M. +

Shamou Abraham +
~~Shamou~~ 20
 Peter M.
 George A.J. 20

~~Walter M. Anderson~~
 Moore A.M. 20
 +

~~J.H.J. Crawford~~
 Magelin Peter 20

+
 Gacher Daniel

~~Walter M. Anderson~~
~~Walter M. Anderson~~

+
 Dave Oppinger

+
 Christ

160
 150
 140
 130
 120
 110
 100
 90
 80
 70
 60
 50
 40
 30
 20
 10
 1
 100
 140
 140
 130
 120
 110
 100
 90
 80
 70
 60
 50
 40
 30
 20
 10
 1

Adams

County, Indiana, 1880.

Assessor's Plat-Book for

Garrison

Township, No. 85-

NAMES OF OWNERS.	Number on Plat.	DESCRIPTION.		Section.	Township.	Range.	Acres.	Hundredths.	Value of Lands.	Value of Improvements.	Value of Lands and Improvements.	
Aspy Delila	35	Npt	W ²	N ²	35	26	14	30	270		270	
"	"	pt	N ²	N ²	"	"	"	7	50	40	40	
Chapman Theo	"	pt	N ²	N ²	"	"	"	8	25	50	50	
Cunning J W	"	pt	N ²	N ²	"	"	"	16	66	100	20	120
Cook Sarah	"	mid. E ²	N ²	N ²	"	"	"	23	35	190		125
Hawbecker P B	"	W ²	E ²	N ²	"	"	"	24	35	190	40	230
A W	"	pt	W ²	N ²	"	"	"	50	460	110	560	
Hawbecker Peter	"	N ²	N ²	N ²	"	"	"	80	800	800	1600	
Congreuter John	"	W ²	N ²	N ²	"	"	"	80	720	100	820	
Hirchy J. L.	"	pt	W ²	W ²	"	"	"	78	700	80	780	
Smith Saml	"	Sept	W ²	W ²	"	"	"	1	90	20	20	
Oliver M C.	"	E ²	W ²	W ²	"	"	"	80	500	20	520	
Wester D. and B	"	W ²	W ²	W ²	"	"	"	80	500		500	
Michael Joseph.	"	N ²	W ²	W ²	"	"	"	40	240		240	
Herrick Georg.	"	N ²	W ²	W ²	"	"	"	40	240		240	
								638	4940			

Adams

County, Indiana, 1880.

Assessor's Plat-Book for Waverly

Township, No. 36

NAMES OF OWNERS.	Number on Plat.	DESCRIPTION.		Section.	Township.	Range.	Acres.	Hundredths.	Value of Lands.	Value of Improvements.	Value of Lands and Improvements.
Proden Peter	36	W/2	N/2	36	26	14	40		280		280
" P. W.	"	N/2	N/2	"	"	"	48		280		280
Oliver Vilas	"	W/2	N/2	"	"	"	80		480	20	500
Do	"	pt E/2	NW	"	"	"	6		40	40	80
Apatt Lewis	"	pt E/2	NW	"	"	"	38		210	10	220
Appy Lawrence	"	E/2 W/2	NW	"	"	"	50		350	30	380
Waring G. W.	"	W/2 W/2	NW	"	"	"	30		180	20	200
Ellen Margaret	"	W/2	SW	"	"	"	80		560	40	600
Cossey R. J.	"	E/2	SW	"	"	"	80		540	20	560
Do	"	W/2	SE	"	"	"	80		540	60	600
Crawford Josiah	"	E/2	SE	"	"	"	80		560		560
Lesichtler M. J.	"	pt E/2	NW	"	"	"	44		300	20	320
							640		4320		

SCALE:—Forty rods to an inch, or ten rods to a space, Congress Land, which is one mile square for a section.
Number of acres in this section according to the UNITED STATES Survey

160
150
140
130
120
110
100
90
80
70
60
50
40
30
20
10
1
2
3
4
5
6
7
8
9
10
11
12
13
14
15
16

Margaret Allen
+
19

R. E. Correy
+

R. E. Correy
+

Josiah Crawford
+

E. W. Bricker
Sept. 26, 1857
30 acres

Appt. Lawrence
Ely Margaret
50

Oliver Elias
44
Bricker
111

Brown, Hyatt

W. J. 26, 57
200

6 years 20 rods
D. W. P.

John

Alley Sam H
50

Miller
Mathias
44
44

Proctor
50 acres