

Blair

County, Indiana, 1880.

Assessor's Plat-Book for

Garrison

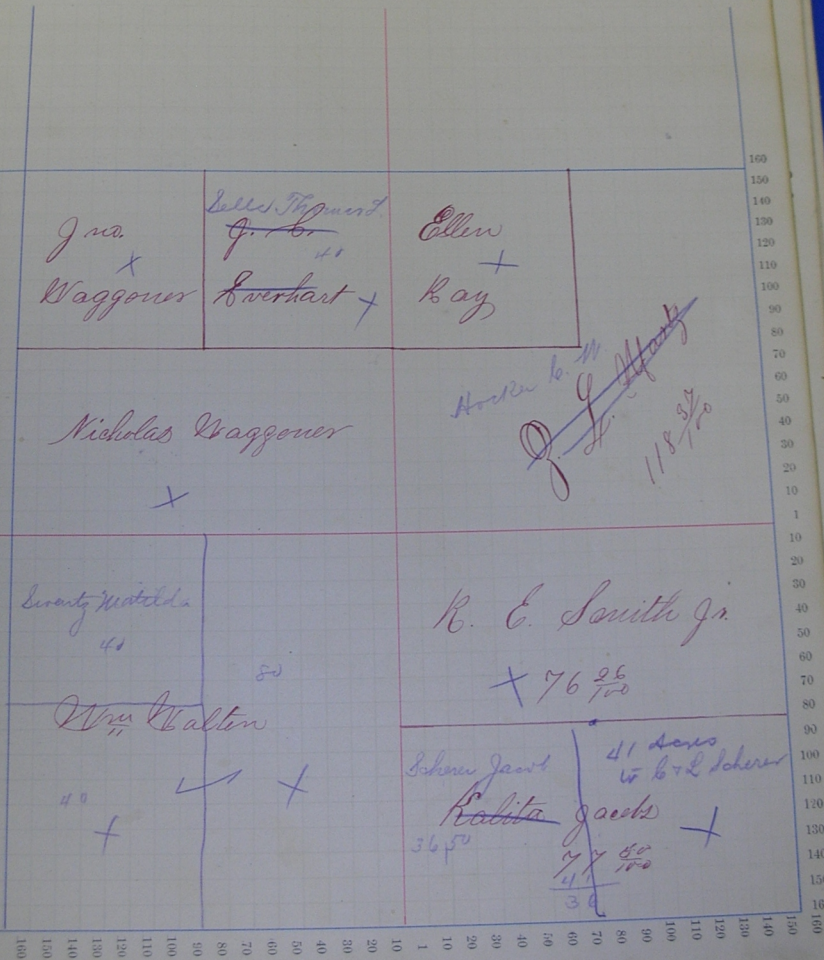
Township, No. 9

NAMES OF OWNERS.	Number on Plat.	DESCRIPTION.			Acres.	Hundredths.	Value of Lands.	Value of Improvements.	Value of Lands and Improvements.		
		Section.	Township.	Range.							
Le. Martha	1.	NE	NE	9	24	118	37	1600	100	1700	
Key Ellen	"	NW	NE	"	"	"	40	00	340	30	370
Kovachek J. C.	"	NE	NW	"	"	"	40		350	20	370
Kagner John	"	NW	NW	"	"	"	40		320	40	360
Kagner Nicholas	"	SE	NW	"	"	"	80		700	200	900
Kelton Wm	"	SE	SE	"	"	"	160		1400	250	1650
Jacobs Galita	"	SE	SE	"	"	"	77	50	660	60	720
Smith R E Jun	"	NE	SE	"	"	"	76	20	660	140	800
							632		5430		

Section No. 9

Congressional Township No. 26 N., R. 19 E.

SCALE—Fifty rods to an inch, or ten rods to a space, Congress Land, which is one mile square for a section.
 Number of acres in this section according to the UNITED STATES Survey



Adams

County, Indiana, 1880.

Assessor's Plat-Book for *Yarrow*

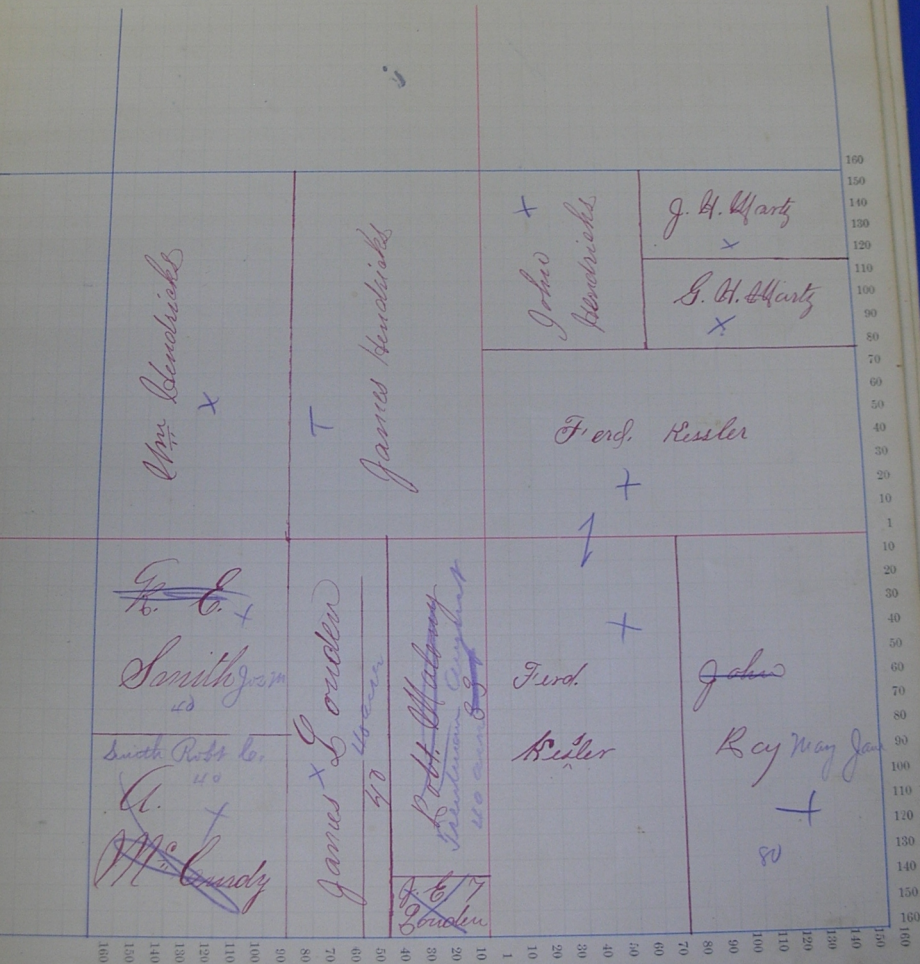
Township, No. *12*

NAMES OF OWNERS.	Number on Plat.	DESCRIPTION.	Section.	Township.	Range.	Acres.	Hundredths.	Value of Lands.	Value of Improvements.	Value of Lands and Improvements.
<i>O. H. Math</i>	<i>10</i>	<i>1/2</i> <i>N. E.</i> <i>N. E.</i>	<i>10</i>	<i>26</i>	<i>14</i>	<i>20</i>	<i>160</i>	<i>15</i>	<i>175</i>	
<i>Math, J. W.</i>	<i>..</i>	<i>1/2</i> <i>N. E.</i> <i>N. E.</i>	<i>..</i>	<i>..</i>	<i>..</i>	<i>20</i>	<i>160</i>	<i>10</i>	<i>170</i>	
<i>Fessel Fred</i>	<i>..</i>	<i>1/2</i> <i>N. E.</i>	<i>..</i>	<i>..</i>	<i>..</i>	<i>80</i>	<i>700</i>	<i>100</i>	<i>800</i>	
<i>Sandricks James</i>	<i>..</i>	<i>E/2</i> <i>N. W.</i>	<i>..</i>	<i>..</i>	<i>..</i>	<i>80</i>	<i>680</i>	<i>250</i>	<i>930</i>	
<i>Wm</i>	<i>..</i>	<i>1/2</i> <i>N. W.</i>	<i>..</i>	<i>..</i>	<i>..</i>	<i>80</i>	<i>700</i>	<i>100</i>	<i>800</i>	
<i>Umitto R. C.</i>	<i>..</i>	<i>N. W.</i> <i>S. W.</i>	<i>..</i>	<i>..</i>	<i>..</i>	<i>40</i>	<i>350</i>	<i>50</i>	<i>400</i>	
<i>McCurdy Absolon</i>	<i>..</i>	<i>S. W.</i> <i>S. W.</i>	<i>..</i>	<i>..</i>	<i>..</i>	<i>40</i>	<i>350</i>	<i>40</i>	<i>390</i>	
<i>London James.</i>	<i>..</i>	<i>1/2</i> <i>E. S.</i> <i>S. W.</i>	<i>..</i>	<i>..</i>	<i>..</i>	<i>40</i>	<i>340</i>	<i>20</i>	<i>360</i>	
<i>Hilkony Rott</i>	<i>..</i>	<i>E. S.</i> <i>E. S.</i> <i>S. W.</i>	<i>..</i>	<i>..</i>	<i>..</i>	<i>33</i>	<i>280</i>	<i>10</i>	<i>290</i>	
<i>London G. C.</i>	<i>..</i>	<i>1/2</i> <i>E. S.</i> <i>S. W.</i>	<i>..</i>	<i>..</i>	<i>..</i>	<i>7</i>	<i>60</i>	<i>40</i>	<i>100</i>	
<i>Kester Fred</i>	<i>..</i>	<i>1/2</i> <i>S. E.</i>	<i>..</i>	<i>..</i>	<i>..</i>	<i>80</i>	<i>700</i>	<i>40</i>	<i>740</i>	
<i>Roy John</i>	<i>..</i>	<i>E/2</i> <i>S. E.</i>	<i>..</i>	<i>..</i>	<i>..</i>	<i>80</i>	<i>720</i>	<i>10</i>	<i>730</i>	
<i>Sandricks John.</i>	<i>..</i>	<i>N. W.</i> <i>N. E.</i>	<i>..</i>	<i>..</i>	<i>..</i>	<i>40</i>	<i>320</i>	<i>20</i>	<i>340</i>	
						<i>640</i>	<i>5520</i>			

Section No. 10

Congressional Township No. 26, N., R. 19 E.

SCALE—Forty rods to an inch, or ten rods to a space, Congress Land, which is one mile square for a section.
 Number of acres in this section according to the UNITED STATES Survey



Dams

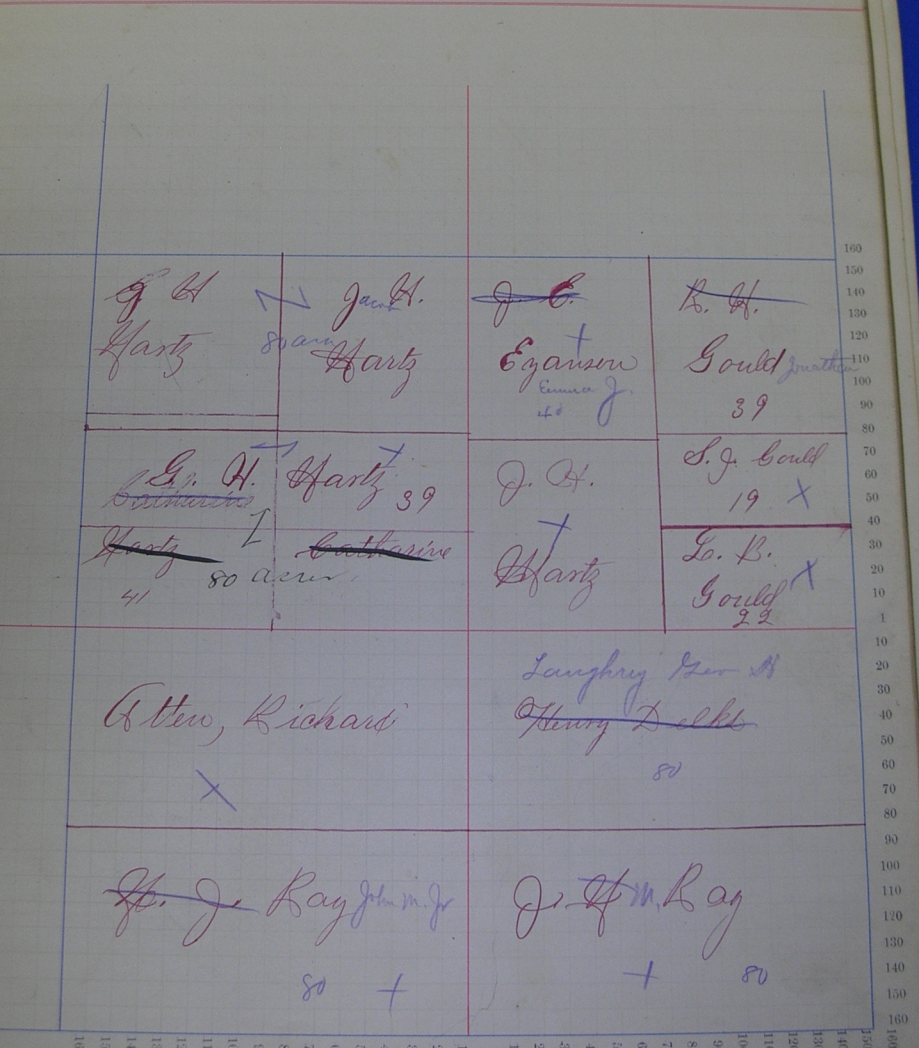
County, Indiana, 1880.

Assessor's Plat-Book for *Yarnall*

Township, No. *4*

NAMES OF OWNERS.	Number on Plat.	DESCRIPTION.	Section.	Township.	Range.	Acres.	Hundredths.	Value of Lands.	Value of Improve-ments.	Value of Lands and Improvements.
<i>Gould R. H.</i>	<i>11</i>	<i>NW 1/4 Sec. 18</i>	<i>11</i>	<i>26</i>	<i>14</i>	<i>39</i>		<i>264</i>	<i>36</i>	<i>300</i>
<i>" J. C.</i>	<i>"</i>	<i>Mid. 1/4 Sec. 18</i>	<i>"</i>	<i>"</i>	<i>"</i>	<i>18</i>		<i>140</i>		<i>140</i>
<i>" S. B.</i>	<i>"</i>	<i>SW 1/4 Sec. 18</i>	<i>"</i>	<i>"</i>	<i>"</i>	<i>32</i>		<i>140</i>		<i>140</i>
<i>Eganson. J. C.</i>	<i>"</i>	<i>NW Sec. 18</i>	<i>"</i>	<i>"</i>	<i>"</i>	<i>40</i>		<i>360</i>	<i>40</i>	<i>400</i>
<i>Marty J. H.</i>	<i>"</i>	<i>NW Sec. 18</i>	<i>"</i>	<i>"</i>	<i>"</i>	<i>80</i>		<i>700</i>	<i>300</i>	<i>1000</i>
<i>" J. H.</i>	<i>"</i>	<i>SW Sec. 18</i>	<i>"</i>	<i>"</i>	<i>"</i>	<i>40</i>		<i>280</i>	<i>30</i>	<i>310</i>
<i>" J. H.</i>	<i>"</i>	<i>NW 1/4 Sec. 18</i>	<i>"</i>	<i>"</i>	<i>"</i>	<i>39</i>		<i>330</i>	<i>260</i>	<i>590</i>
<i>" Catharine</i>	<i>"</i>	<i>SW 1/4 Sec. 18</i>	<i>"</i>	<i>"</i>	<i>"</i>	<i>41</i>		<i>320</i>	<i>40</i>	<i>360</i>
<i>Atton Richard</i>	<i>"</i>	<i>NW Sec. 18</i>	<i>"</i>	<i>"</i>	<i>"</i>	<i>80</i>		<i>680</i>		<i>680</i>
<i>Ray Mary J.</i>	<i>"</i>	<i>SW 1/4 Sec. 18</i>	<i>"</i>	<i>"</i>	<i>"</i>	<i>80</i>		<i>640</i>	<i>200</i>	<i>840</i>
<i>" John M.</i>	<i>"</i>	<i>SW 1/4 Sec. 18</i>	<i>"</i>	<i>"</i>	<i>"</i>	<i>80</i>		<i>600</i>	<i>40</i>	<i>640</i>
<i>Delko Henry</i>	<i>"</i>	<i>NW Sec. 18</i>	<i>"</i>	<i>"</i>	<i>"</i>	<i>80</i>		<i>640</i>		<i>640</i>
						<i>640</i>		<i>5094</i>		

SCALE:—Forty rods to an inch, or ten rods to a space, Congress Land, which is one mile square for a section.
Number of acres in this section according to the UNITED STATES SURVEY



A. W. Richards
X

Langtry Geo W
Henry Dells
80

H. J. Ray John M. Jr
80 +

J. H. M. Ray
+ 80

Adams

County, Indiana, 1880.

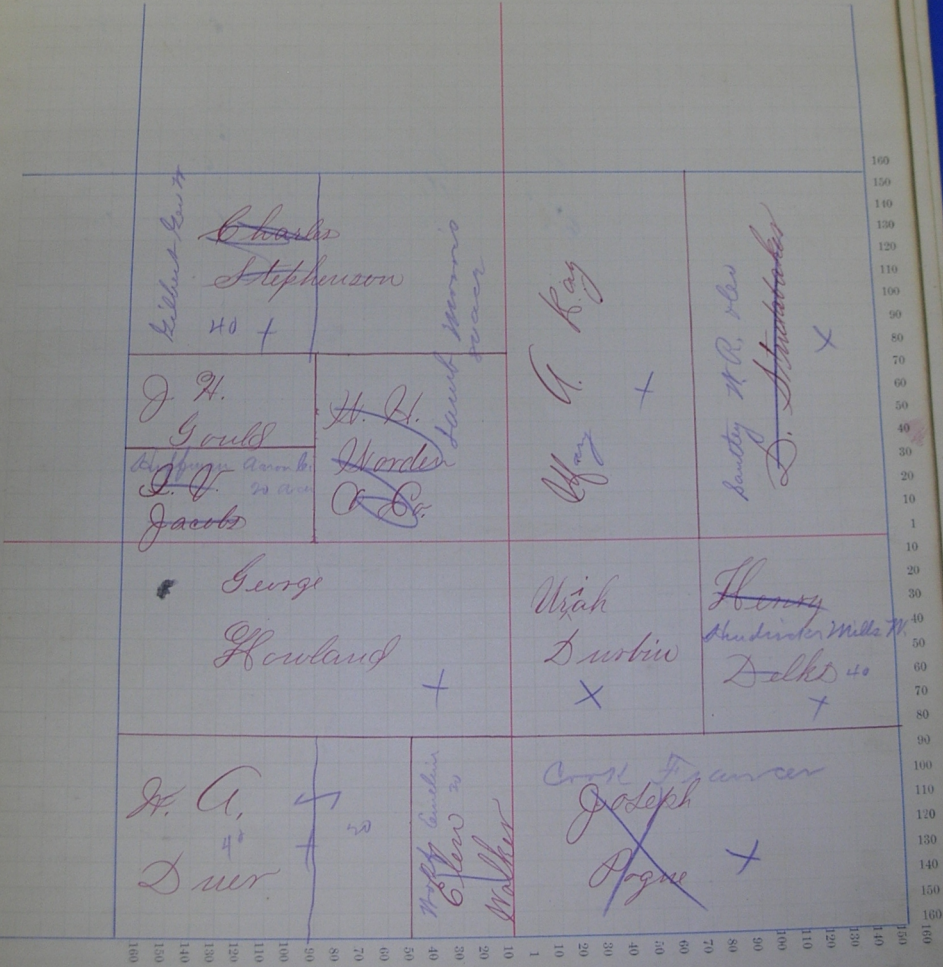
Assessor's Plat-Book for

Garrison

Township, No. 12

NAMES OF OWNERS.	Number on Plat.	DESCRIPTION.		Section.	Township.	Range.	Acres.	Hundredths.	Value of Lands.	Value of Improve-ments.	Value of Lands and Improvements.
Wiedebaker D	13	E $\frac{1}{2}$	N $\frac{1}{2}$	12	26	4	80		640		640
Key M A	"	W $\frac{1}{2}$	N $\frac{1}{2}$	"	"	"	80		580	120	700
Wapshanson Charles	"	W $\frac{1}{2}$	SW	"	"	"	80		560	70	630
Condit J. H.	"	W $\frac{1}{2}$	SW	12	26	4	25		160	20	180
Jacobs J. A.	"	W $\frac{1}{2}$	SW	12	26	4	25		160	10	170
Nordien Wm N. & Co.	"	W $\frac{1}{2}$	SW	"	"	"	40		320		320
Howland George	"	W $\frac{1}{2}$	SW	"	"	"	80		720	120	840
Dun Wm A.	"	W $\frac{1}{2}$	SW	"	"	"	60		500	80	580
Walker Ellen	"	E $\frac{1}{2}$	SW	"	"	"	20		160	30	190
Spone Joseph	"	W $\frac{1}{2}$	SW	"	"	"	80		640	160	800
Shubin Uriah	"	SW	SW	"	"	"	40		320	20	340
Orlks. Henry	"	N $\frac{1}{2}$	SW	"	"	"	40		320		320
							640		5080		

SCALE—Forty rods to an inch, or ten rods to a space, Congress Land, which is one mile square for a section.
Number of acres in this section according to the UNITED STATES SURVEY



Kilbuck, Lewis 40

~~Charles Stephenson~~
40 +

Hunt Morris
Hunt

Wray A. Kay
+

Santley H.R. 100
D. Strickland X

J. H. Gould
D. J. Jacobs
D. J. Jacobs

~~H. H. Worden~~
A. D.

George Howland
+

Wah Durbin
X

Henry Shindler, Mills 70
Delks 40
+

H. A. Duer
40 +

Holly Lincoln
Glew 20
Walker

Joseph Progne
+

160
150
140
130
120
110
100
90
80
70
60
50
40
30
20
10
1
10
20
30
40
50
60
70
80
90
100
110
120
130
140
150
160

160
150
140
130
120
110
100
90
80
70
60
50
40
30
20
10
1
10
20
30
40
50
60
70
80
90
100
110
120
130
140
150
160