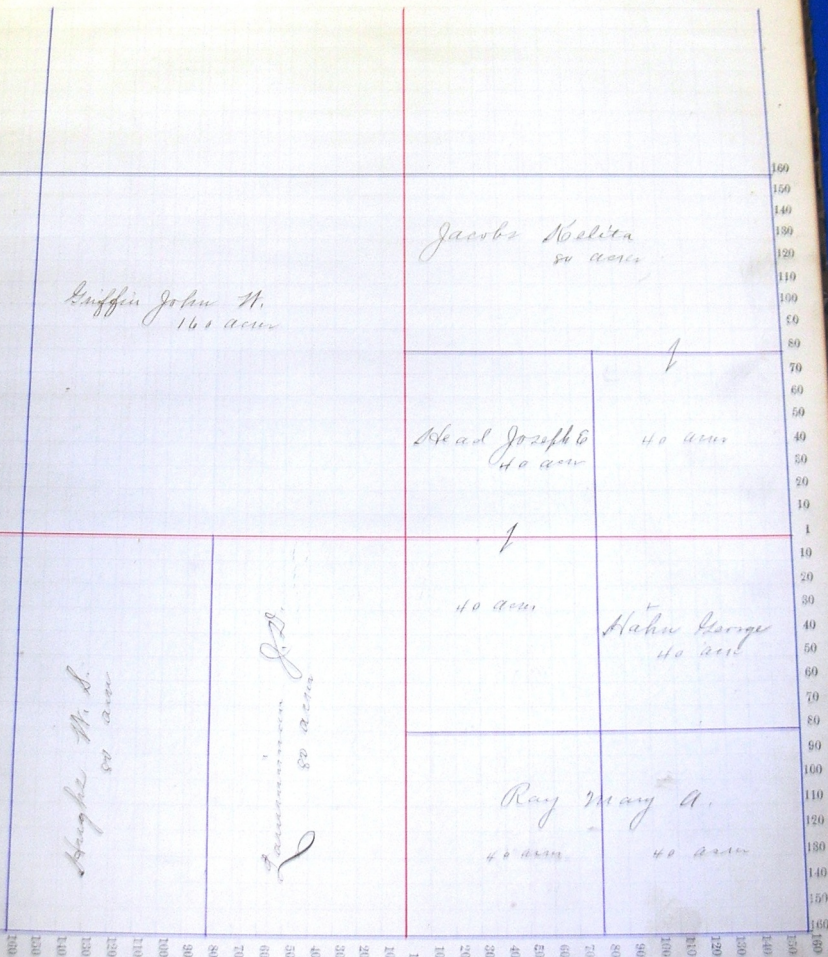


Section No. 1

Congressional Township No. 26, R. 14

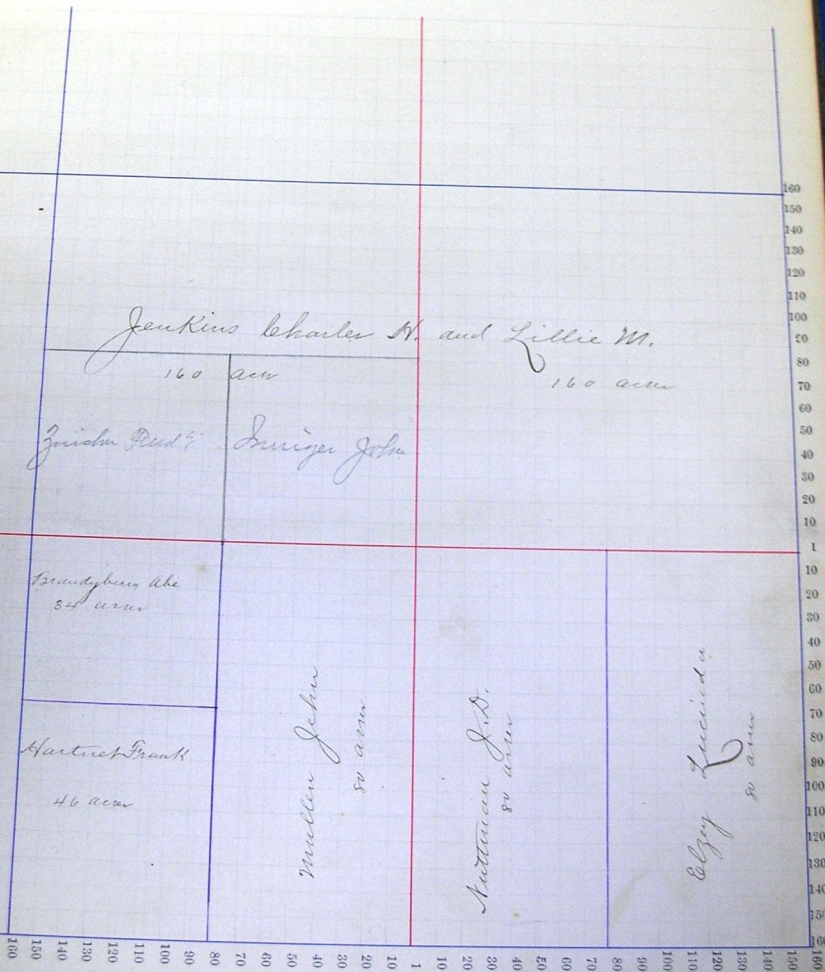
Scale—Forty rods to an inch, or ten rods to a space, Congress Land, which is one mile square for a section.
Number of acres in this section, according to the United States Survey,



Section No. 2

Congressional Township No. 26, R. 14

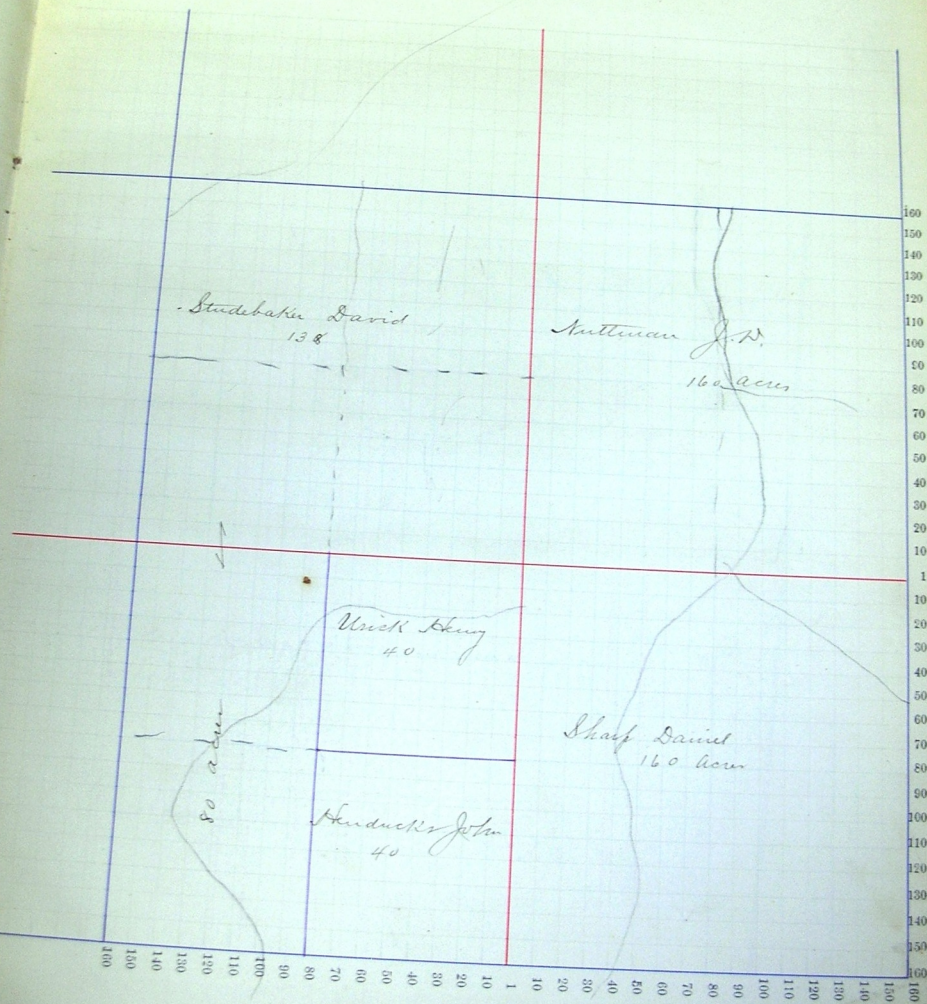
Scale—Forty rods to an inch, or ten rods to a space, Congress Land, which is one mile square for a section.
Number of acres in this section, according to the United States Survey, _____



Section No. 3

Congressional Township No. 26, R. 14

Scale—Forty rods to an inch, or ten rods to a spacer, Congress Land, which is one mile square for a section.
Number of acres in this section, according to the United States Survey, _____

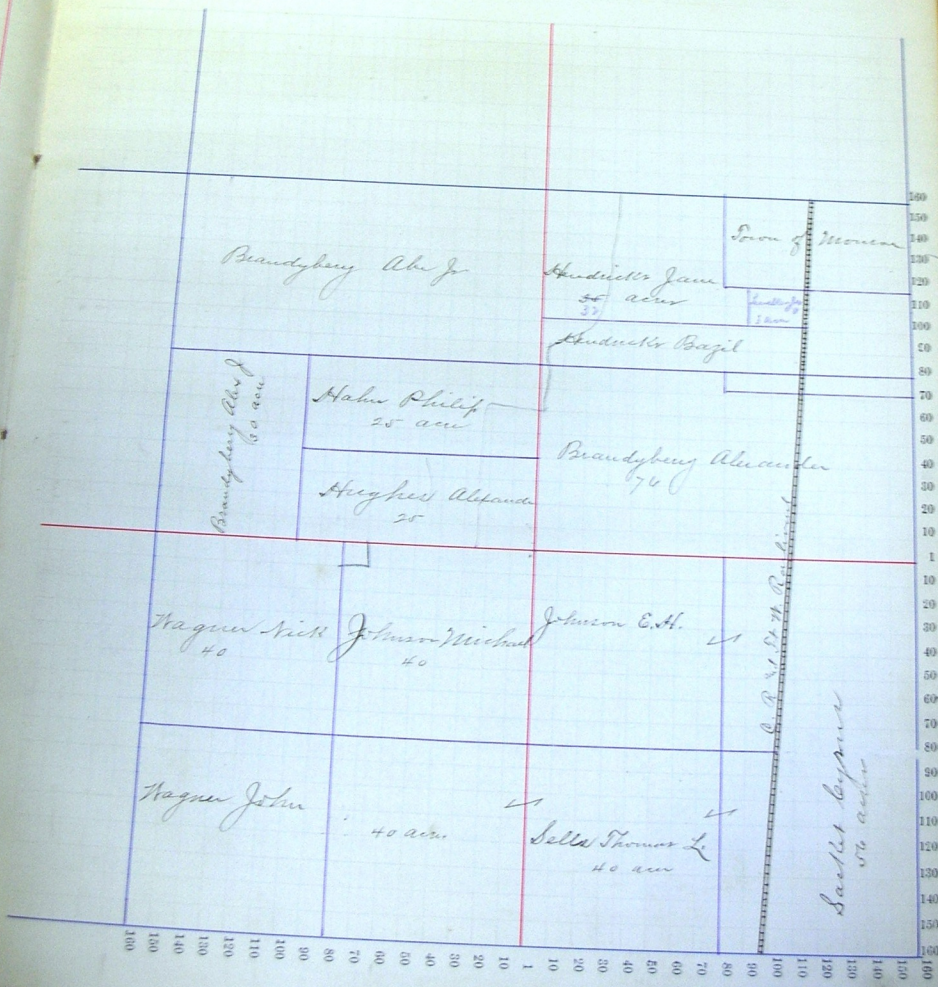


Section No. 4

Congressional Township No. 26, R. 14

Scale—Forty rods to an inch, or ten rods to a space, Congress Land, which is one mile square for a section.
 Number of acres in this section, according to the United States Survey.

Value of
 Lands and
 Improvements.

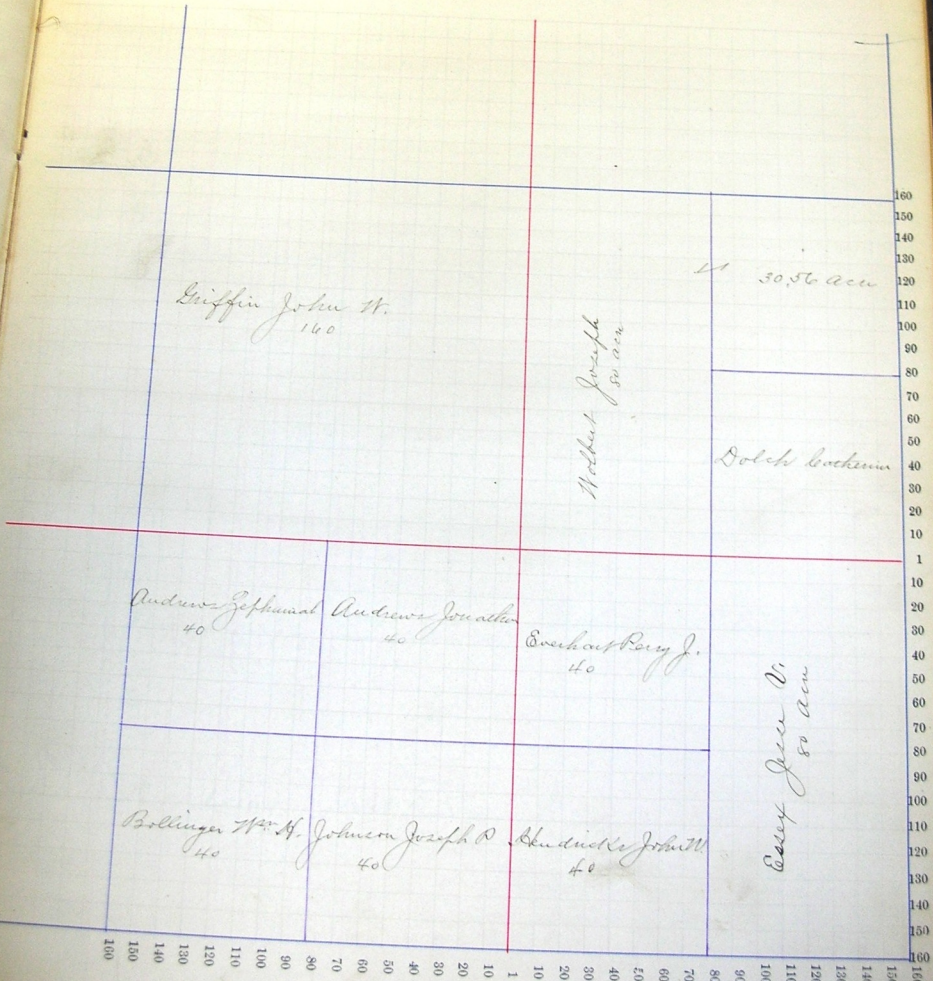


Section No. 25

Congressional Township No. 24, R. 14

Scale—Forty rods to an inch, or ten rods to a space, Congress Land, which is one mile square for a section.
Number of acres in this section, according to the United States Survey, _____

Value of
lands and
improvements.

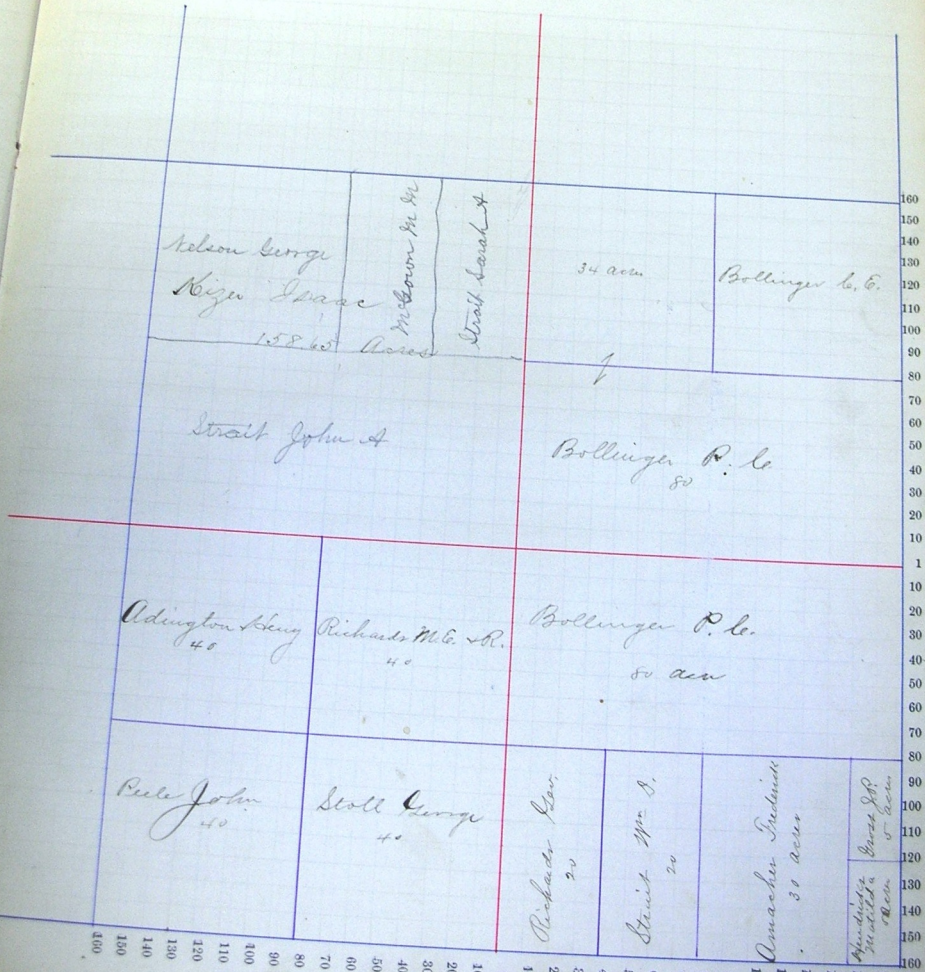


Section No. 6

Congressional Township No. 26, R. 14

Scale—Forty rods to an inch, or ten rods to a space, Congress Land, which is one mile square for a section.
 Number of acres in this section, according to the United States Survey, _____

Value of
lands and
improvements.



150
140
130
120
110
100
90
80
70
60
50
40
30
20
10
1
10
20
30
40
50
60
70
80
90
100
110
120
130
140
150
160