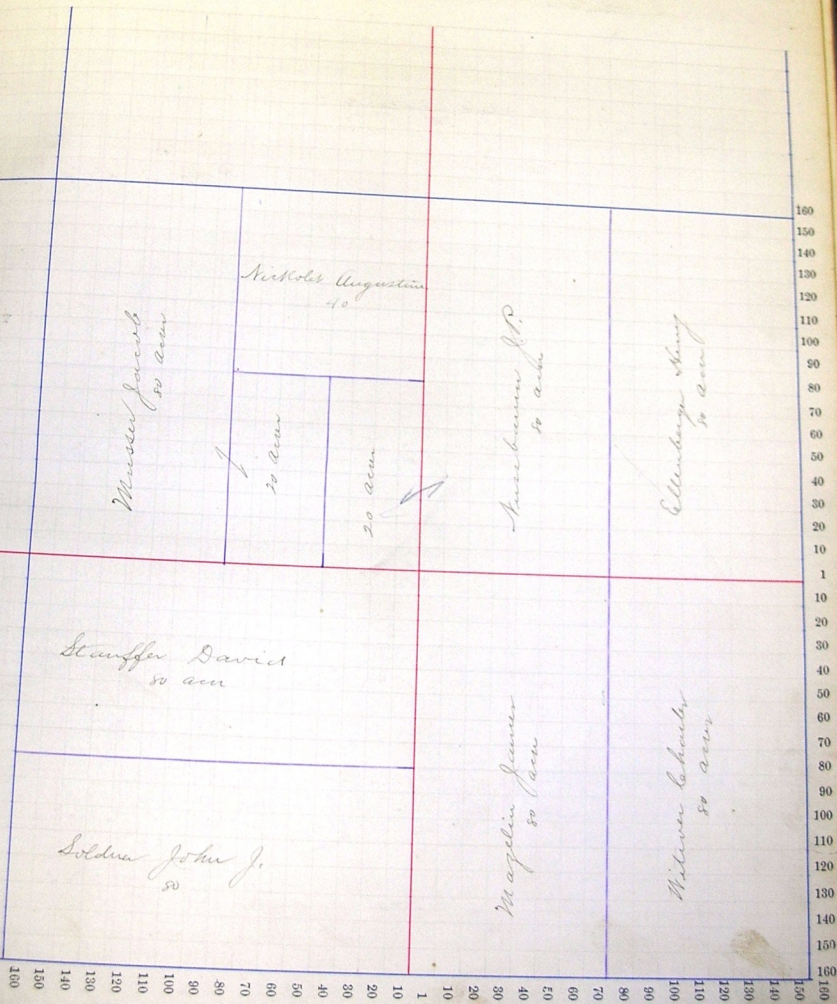


Section No. 19

Congressional Township No. 26, R. 14

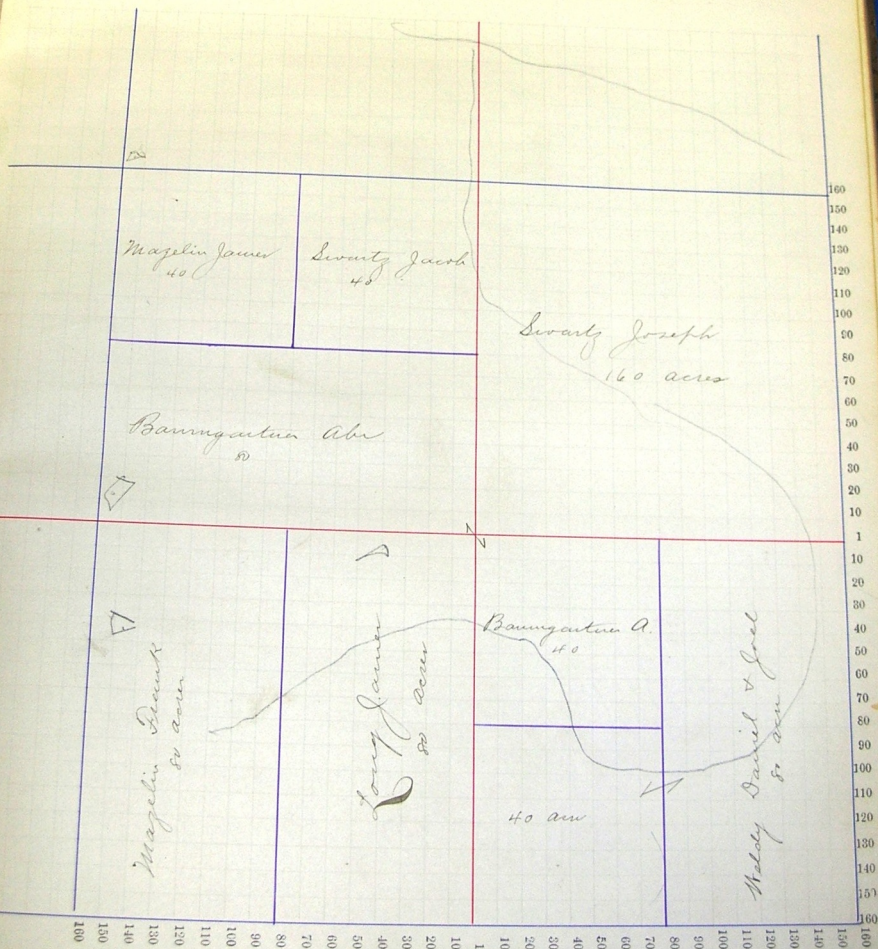
Scale—Forty rods to an inch, or ten rods to a space, Congress Land, which is one mile square for a section.  
Number of acres in this section, according to the United States Survey, \_\_\_\_\_



Section No. 20

Congressional Township No. 26, R. 17

Scale—Forty rods to an inch, or ten rods to a space, Congress Land, which is one mile square for a section.  
Number of acres in this section, according to the United States Survey, \_\_\_\_\_





Section No. 21

Congressional Township No. 26, R. 14

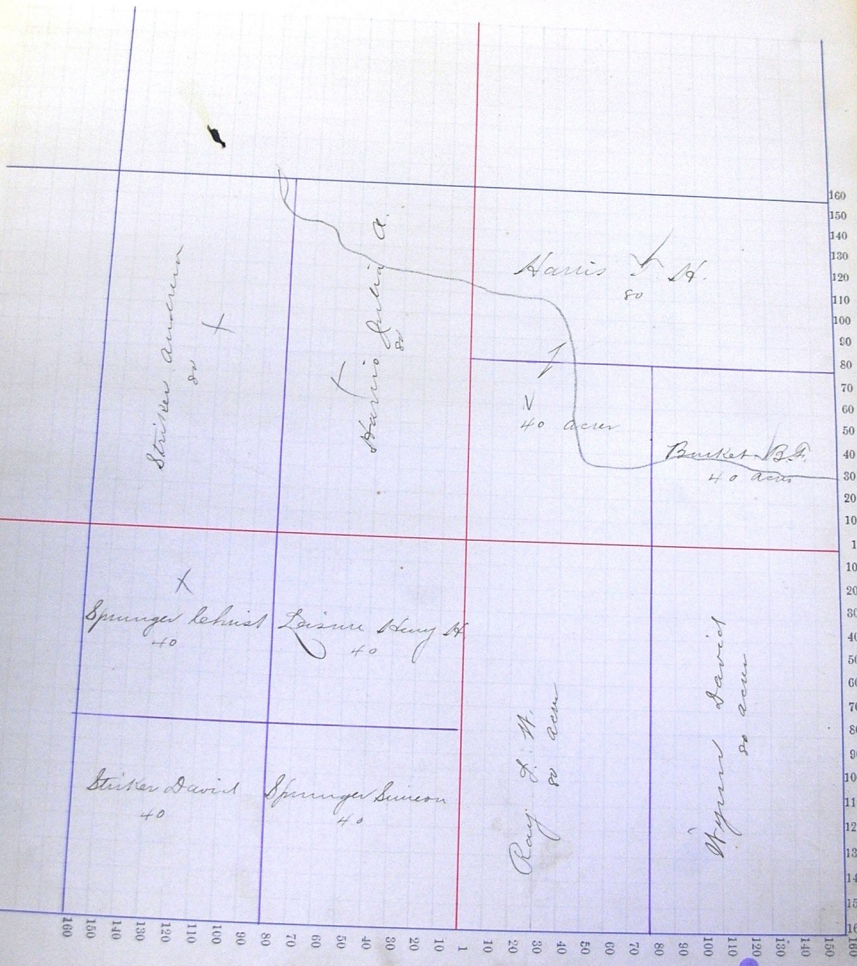
Scale—Forty rods to an inch, or ten rods to a space, Congress Land, which is one mile square for a section.  
 Number of acres in this section, according to the United States Survey, \_\_\_\_\_



Section No. 22

Congressional Township No. 26, R. 14

Scale—Forty rods to an inch, or ten rods to a space, Congress Land, which is one mile square for a section.  
Number of acres in this section, according to the United States Survey, \_\_\_\_\_

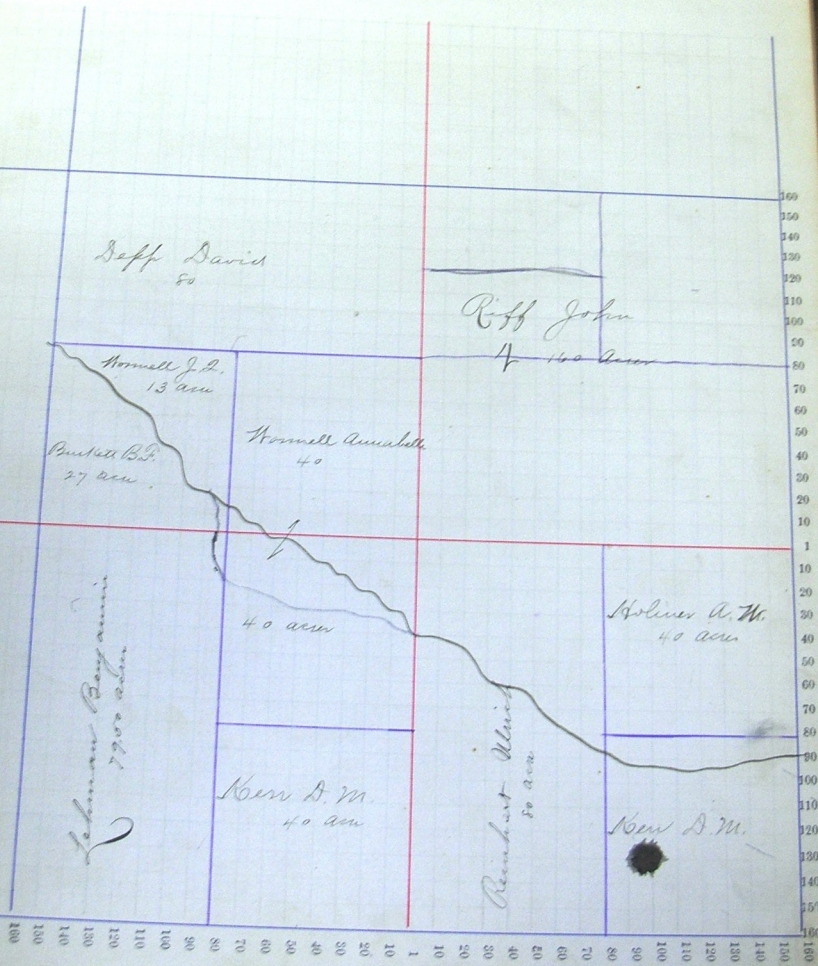




Section No. 23

Congressional Township No. 26, R. 14

Scale—Forty rods to an inch, or ten rods to a space, Congress Land, which is one mile square for a section.  
Number of acres in this section, according to the United States Survey, \_\_\_\_\_



Section No. 244

Congressional Township No. 26, R. 14

Scale—Forty rods to an inch, or ten rods to a space, Congress Land, which is one mile square for a section.  
Number of acres in this section, according to the United States Survey,

