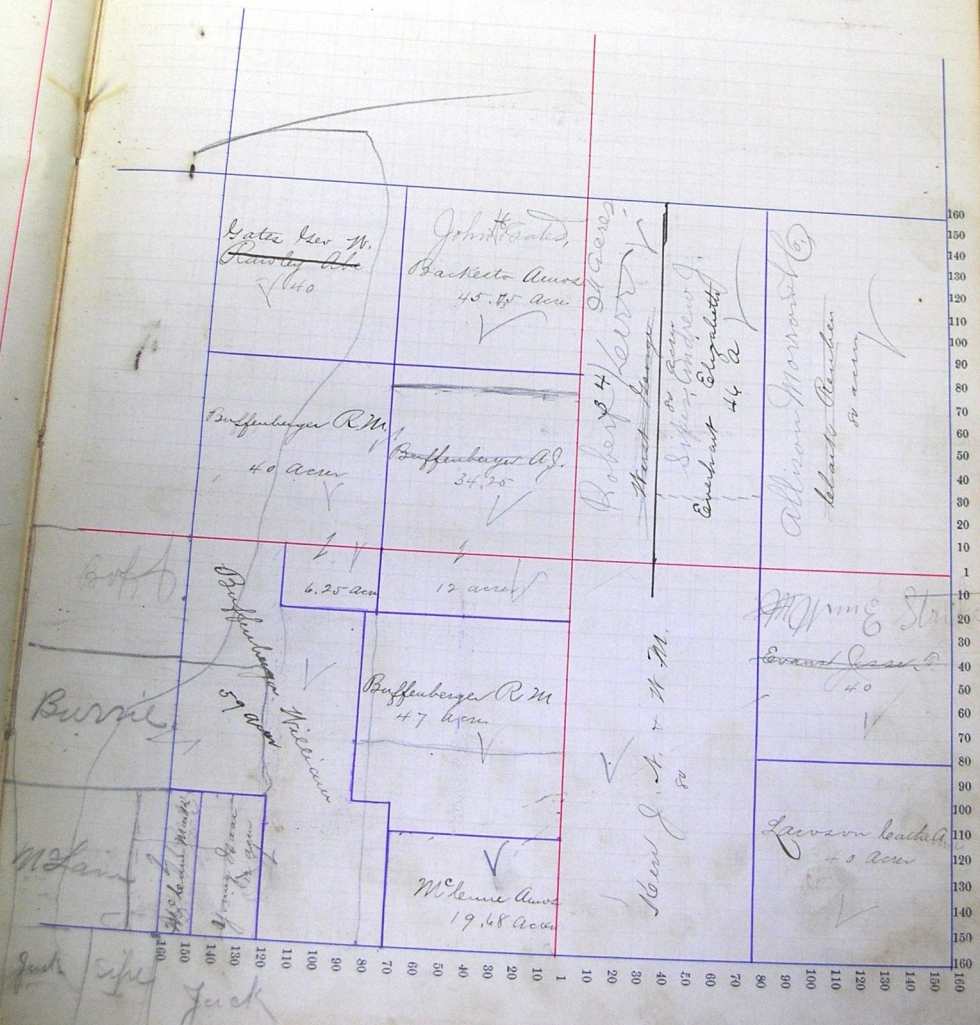


Section No. 25

Congressional Township No. 26, R. 114

Scale—Forty rods to an inch, or ten rods to a space, Congress Land, which is one mile square for a section.
 Number of acres in this section, according to the United States Survey, _____

Value of
Lands and
Improvements.



Section No. 26

Congressional Township No. 26, R. 14

Scale—Forty rods to an inch, or ten rods to a space, Congress Land, which is one mile square for a section.
 Number of acres in this section, according to the United States Survey, _____

Value of
 and
 improvements.



100
 150
 140
 130
 120
 110
 100
 90
 80
 70
 60
 50
 40
 30
 20
 10
 1
 10
 20
 30
 40
 50
 60
 70
 80
 90
 100
 110
 120
 130
 140
 150
 160

Section No. 27

Congressional Township No. 26, R. 14

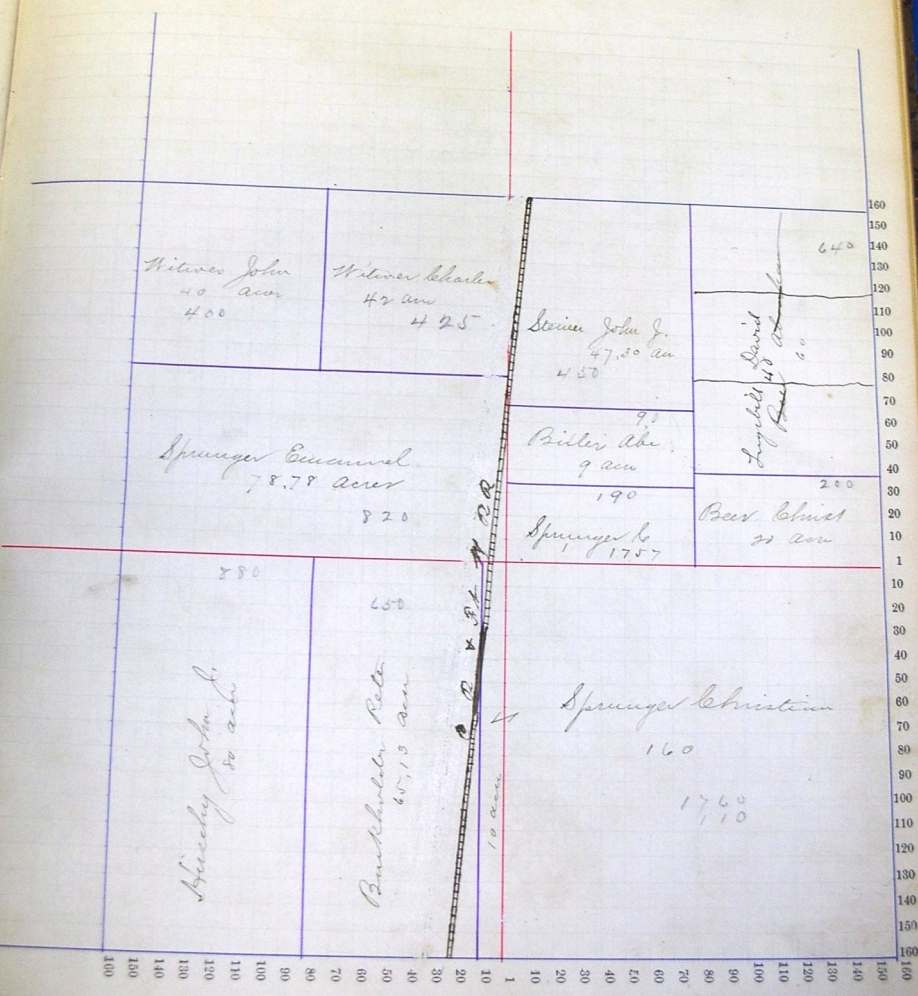
Scale—Forty rods to an inch, or ten rods to a space, Congress Land, which is one mile square for a section.
 Number of acres in this section, according to the United States Survey, _____



Section No. 28

Congressional Township No. 26, R. 14

Scale—Forty rods to an inch, or ten rods to a space, Congress Land, which is one mile square for a section.
Number of acres in this section, according to the United States Survey,



Hilvers John
40 ac
400

Hilvers Charles
42 ac
425

Lavin John J.
47.30 ac
450

Lynch David
40 ac
60

Sprunger Emanuel
78.78 ac
820

Piller Abe
9 ac
190

Sprunger Co
1757

Beas Christ
21 ac
200

Kreedy John L.
50 ac
850

Buckholter Peter
65.9 ac
650

Sprunger Christian
160

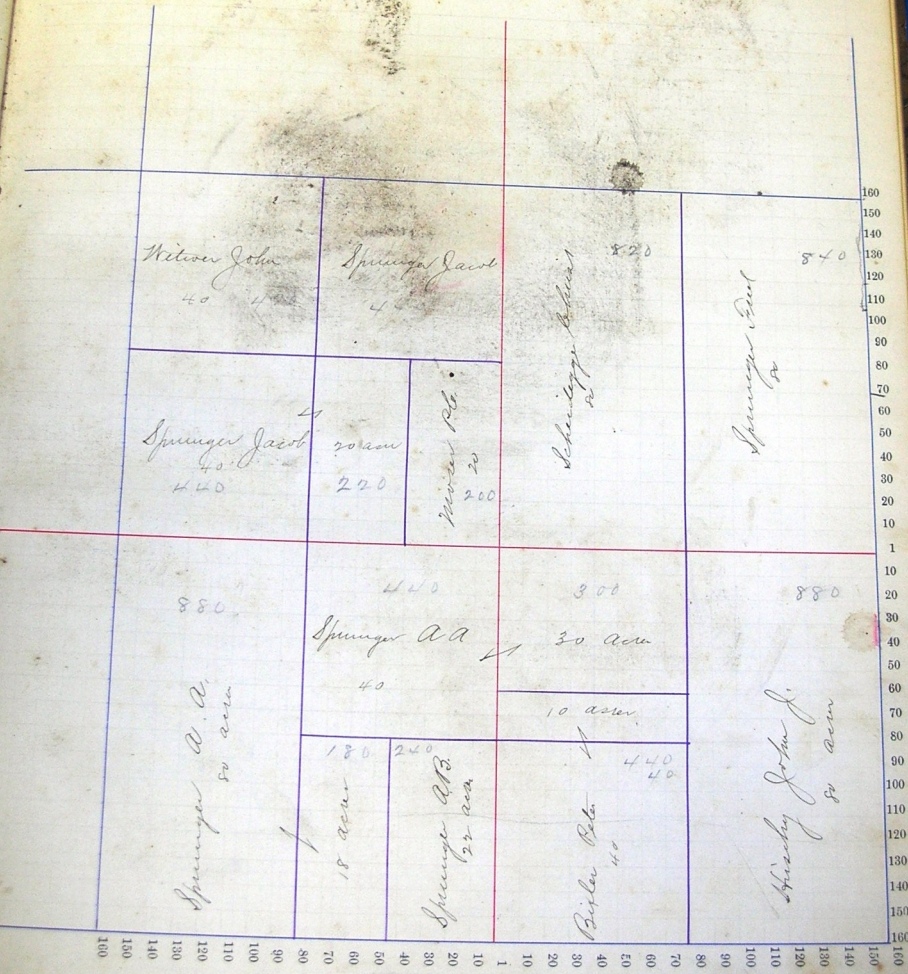
1760
110

R. & P. R.
10 ac
1

Section No. 29

Congressional Township No. 26, R. 14

Scale—Forty rods to an inch, or ten rods to a space, Congress Land, which is one mile square for a section.
 Number of acres in this section, according to the United States Survey, _____



Section No. 30

Congressional Township No. 26, R. 14

Scale—Forty rods to an inch, or ten rods to a space, Congress Land, which is one mile square for a section.
Number of acres in this section, according to the United States Survey, _____

