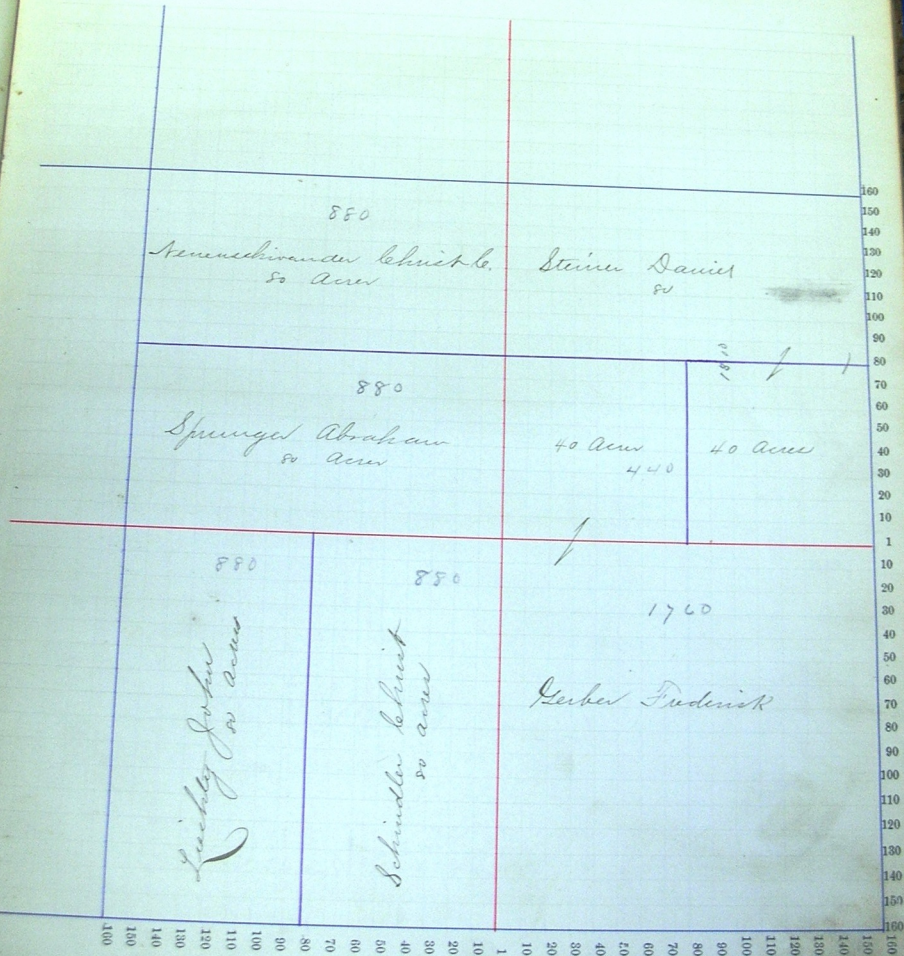


Section No. 31

Congressional Township No. 26, R. 14

Scale—Forty rods to an inch, or ten rods to a space, Congress Land, which is one mile square for a section.
Number of acres in this section, according to the United States Survey, _____



880

Nemuschivander Lehnke
80 Acres

Steiner Daniel
80

880

Sprungel Abraham
80 Acres

40 Acres
440

40 Acres

880

Leitzel John
80 Acres

880

Schindler Lehnke
80 Acres

1760

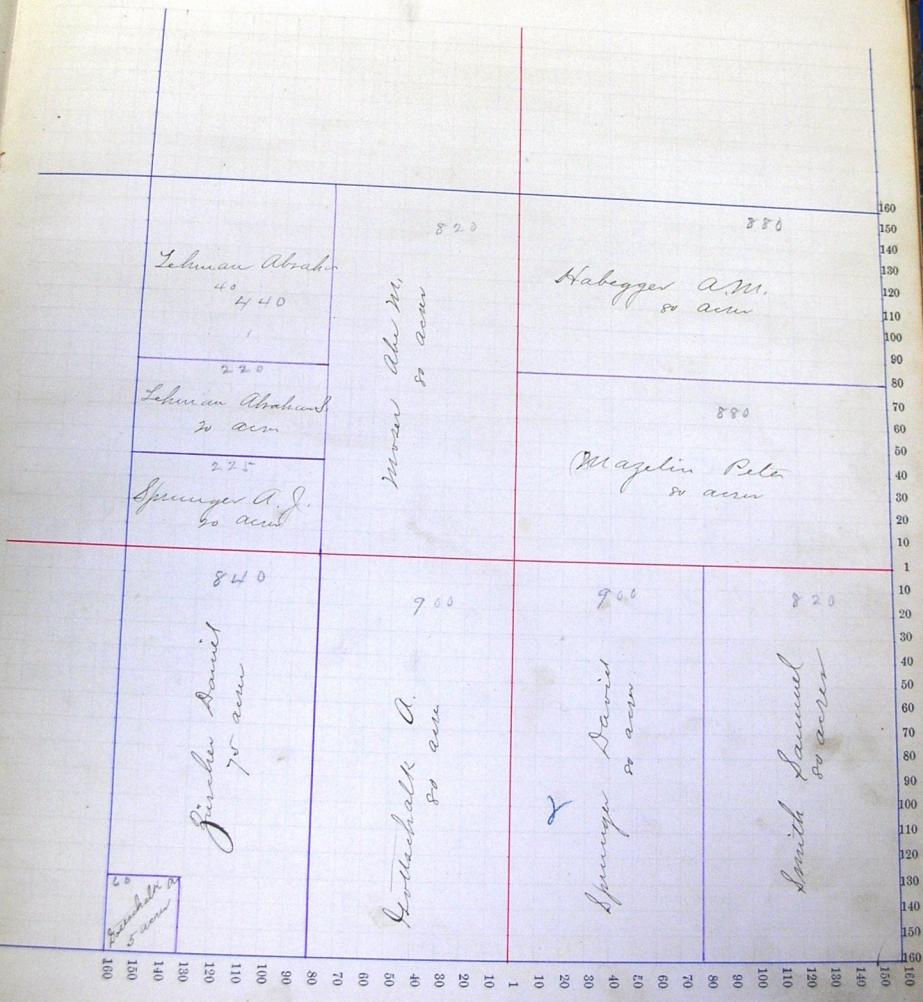
Gerber Frederik

100 120 140 160 180 200 220 240 260 280 300 320 340 360 380 400 420 440 460 480 500 520 540 560 580 600 620 640 660 680 700 720 740 760 780 800 820 840 860 880 900 920 940 960 980 1000

Section No. 54

Congressional Township No. 26, R. 14

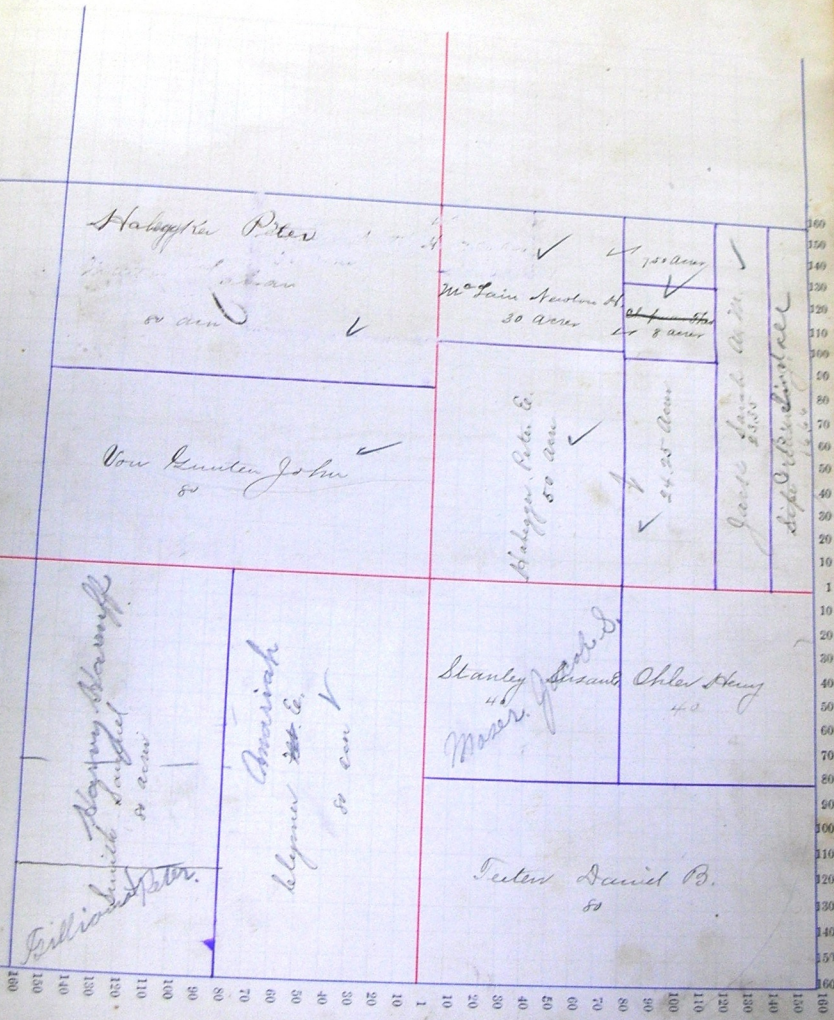
Scale—Forty rods to an inch, or ten rods to a space, Congress Land, which is one mile square for a section.
 Number of acres in this section, according to the United States Survey, _____



Section No. 55

Congressional Township No. 26, R. 14

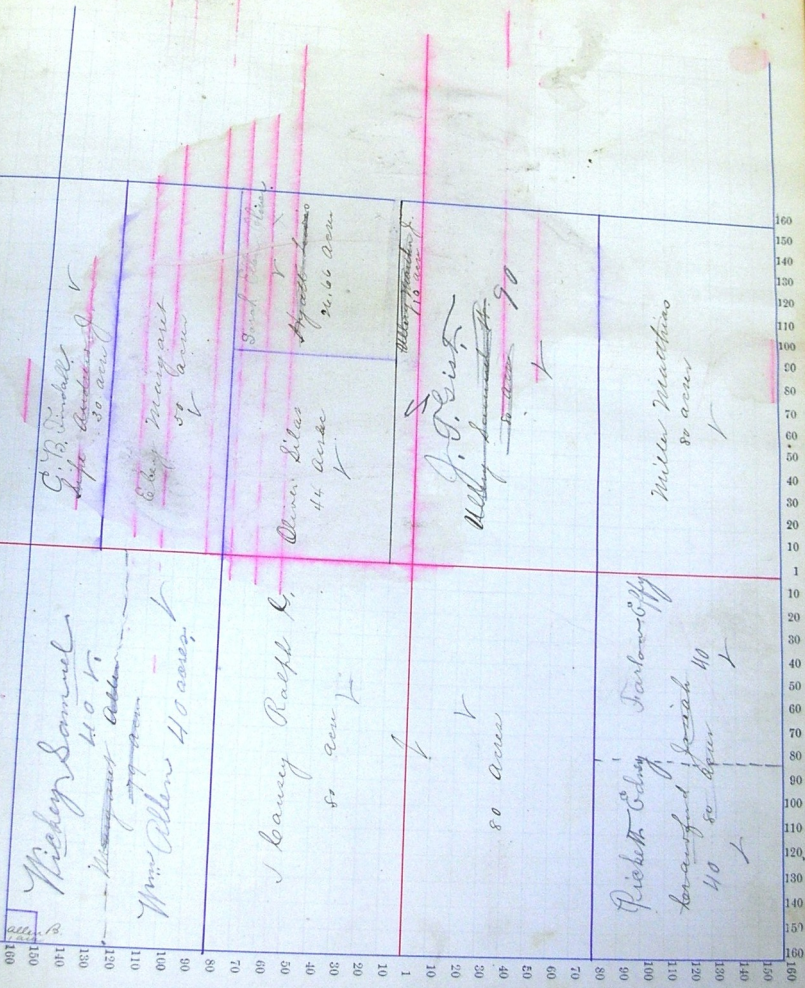
Scale—Forty rods to an inch, or ten rods to a space, Congress Land, which is one mile square for a section.
Number of acres in this section, according to the United States Survey,



Section No. 36

Congressional Township No. 26, R. 14

Scale—Forty rods to an inch, or ten rods to a space, Congress Land, which is one mile square for a section.
 Number of acres in this section, according to the United States Survey,



ally B.
 1000
 1300
 140
 130
 120
 110
 100
 90
 80

160
 150
 140
 130
 120
 110
 100
 90
 80
 70
 60
 50
 40
 30
 20
 10
 1
 10
 20
 30
 40
 50
 60
 70
 80
 90
 100
 110
 120
 130
 140
 150
 160