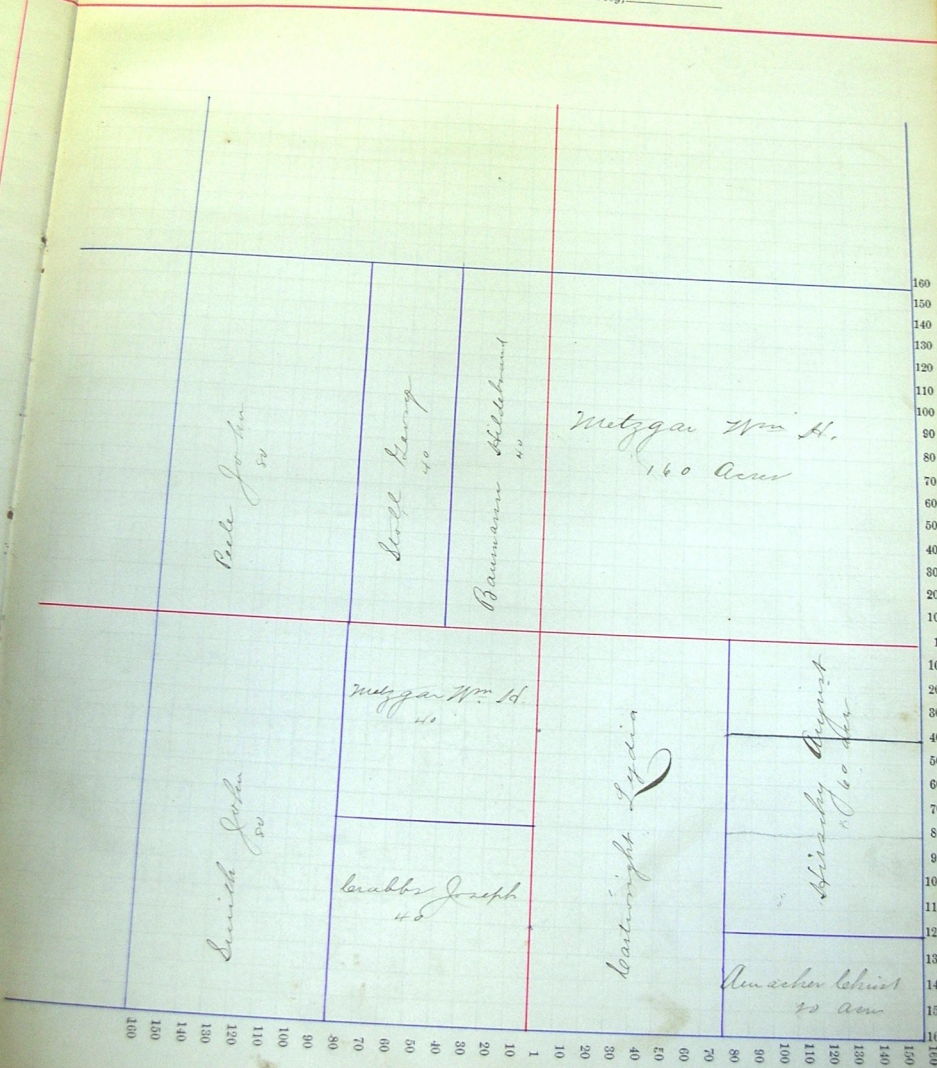


Section No. 7

Congressional Township No. 26, R. 14

Scale—Forty rods to an inch, or ten rods to a space, Congress Land, which is one mile square for a section.
Number of acres in this section, according to the United States Survey, _____



Cole John
50

Stoll Henry
40

Bannan Schleichman
40

Metzger Wm H.
160 Acres

Smith John
50

Metzger Wm H.
40

Larabbs Joseph
40

Leatwright Lydia

Wizsby August
160 Acres

Amacher Christ
20 Acres

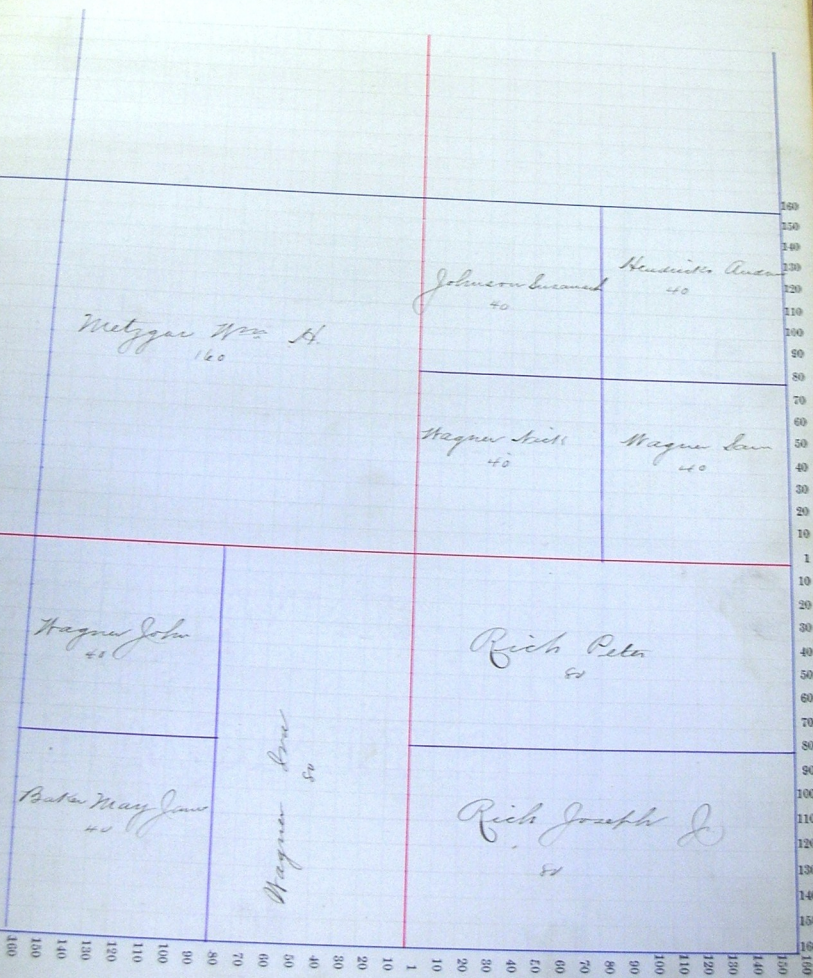
1 10 20 30 40 50 60 70 80 90 100 110 120 130 140 150 160

160
150
140
130
120
110
100
90
80
70
60
50
40
30
20
10
1
10
20
30
40
50
60
70
80
90
100
110
120
130
140
150
160

Section No. 8

Congressional Township No. 26, R. 14

Scale—Forty rods to an inch, or ten rods to a space, Congress Land, which is one mile square for a section.
Number of acres in this section, according to the United States Survey, _____



Metzger Mrs. H.
160

Johnson Leonard
40

Hendricks Anna
40

Wagner John
40

Wagner Levi
40

Wagner John
40

Rich Peter
80

Butler Mary Jane
40

Wagner Levi
50

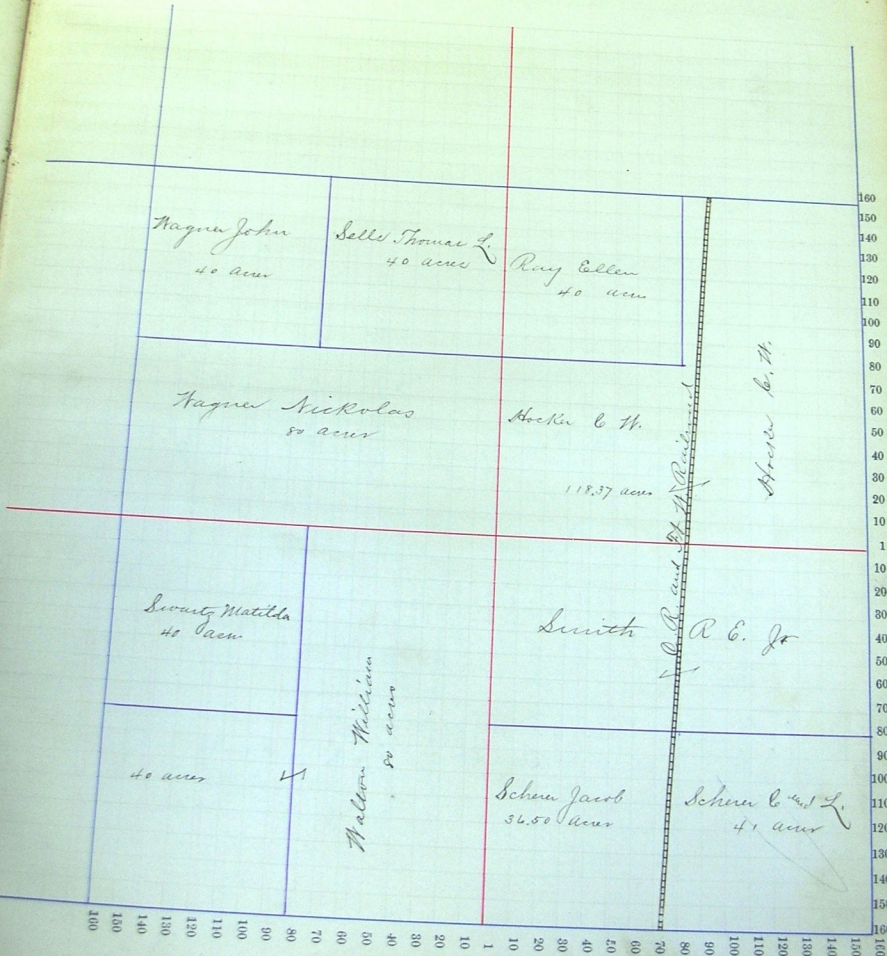
Rich Joseph J.
80

160
150
140
130
120
110
100
90
80
70
60
50
40
30
20
10
1
10
20
30
40
50
60
70
80
90
100
110
120
130
140
150
160

Section No. 9

Congressional Township No. 26, R. 14

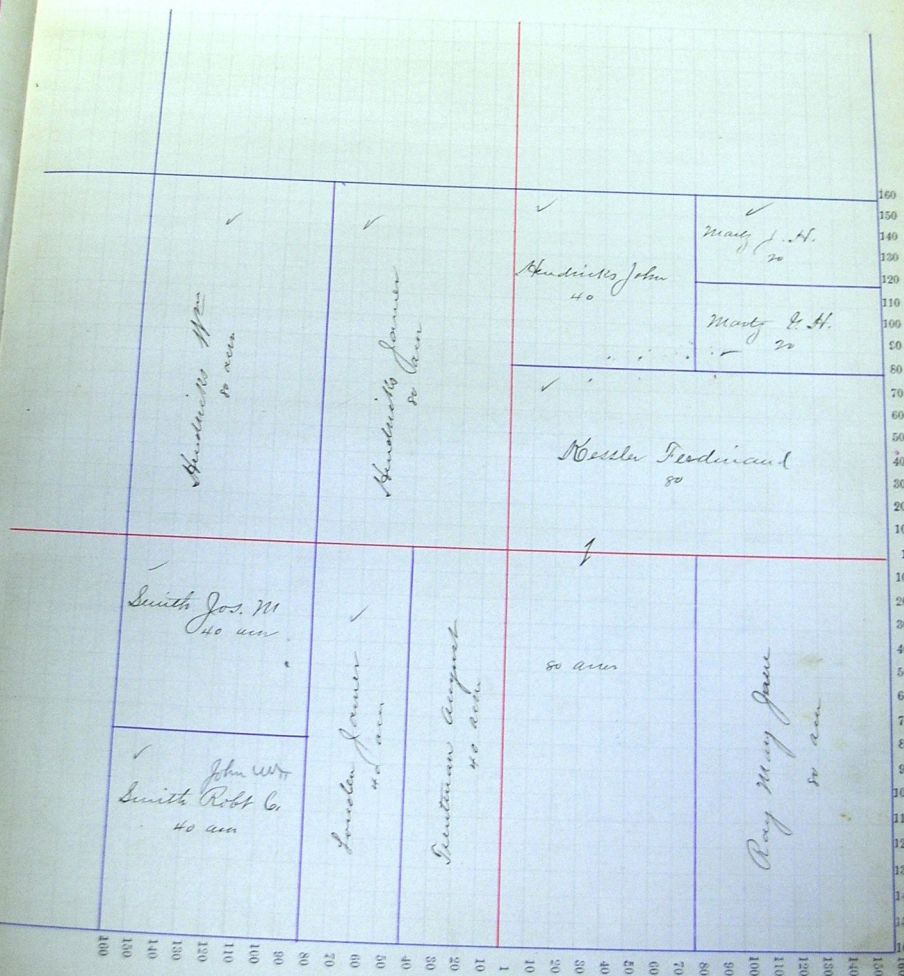
Scale—Forty rods to an inch, or ten rods to a space, Congress Land, which is one mile square for a section.
 Number of acres in this section, according to the United States Survey, _____



Section No. 10

Congressional Township No. 26, R. 14

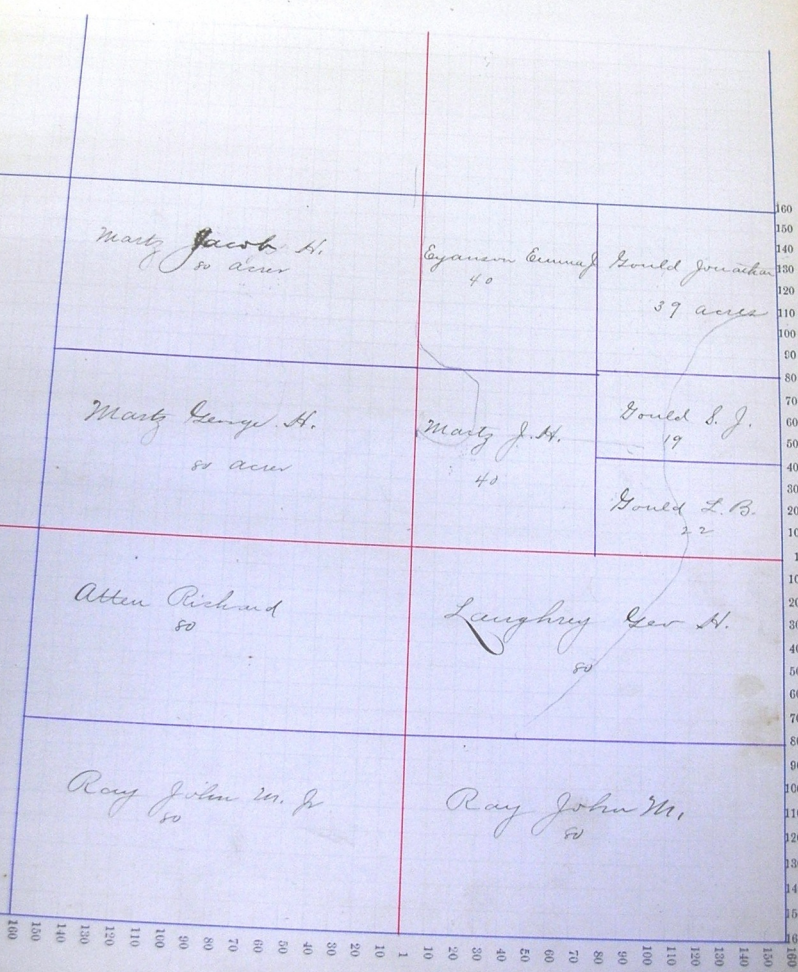
Scale—Forty rods to an inch, or ten rods to a space, Congress Land, which is one mile square for a section.
 Number of acres in this section, according to the United States Survey, _____



Section No. 11

Congressional Township No. 26, R. 14

Scale—Forty rods to an inch, or ten rods to a space, Congress Land, which is one mile square for a section.
 Number of acres in this section, according to the United States Survey, _____



Section No. 12

Congressional Township No. 26, R. 14

Scale—Forty rods to an inch, or ten rods to a space, Congress Land, which is one mile square for a section.
 Number of acres in this section, according to the United States Survey, _____

Value of
lands and
improvements.

