

Adams

COUNTY, INDIANA, 1891

Assessor's Plat-Book for Monroe

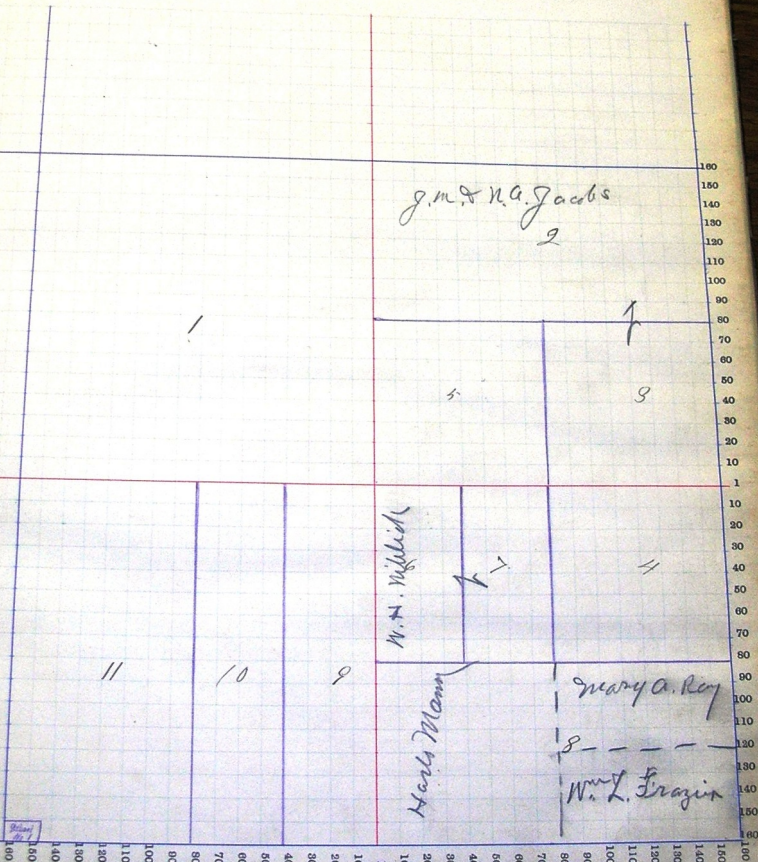
Township. No.

NAMES OF OWNERS.	Number on Plat.	DESCRIPTION.	Section.	Township.	Range.	Acres.	Hundredths.	Value of Lands.	Value of Improvements.	Value of Lands and Improvements.
John Griffin	1		NW	12	14	160		1870	110	1980
Melba Jacobs	2	1/2	NE	12	14	77		920	300	1220
"	3	SE	NE	12	14	40		480		480
Geo. Hagan	4	NE	SE	1	"	40		480	60	540
Genevieve Buckhead	5	SW	NE	"	"	40		400	100	500
"	6	1/2 NW	SE	"	"	20		200	40	240
Ludie J. Dublin	7	1/2 NW	SE	"	"	20		200	50	250
Mary A. Ray	8	1/2	S.E.	"	"	80		860		860
C. A. Sommerman	9	1/2 1/2	SW	"	"	40		480	185	675
J. Sommerman	10	1/2 1/2	SW	"	"	40		480	40	520
Thos. J. Perkins	11	1/2	SW	"	"	78		850	235	1185

SECTION No. 1

Congressional Township No. 26 R. 14 E

Scale—Forty rods to an inch, or ten rods to a space, Congress Land, which is one mile square for a section.
Number of acres in this section, according to the United States Survey.



Adams

COUNTY, INDIANA, 1897

Assessor's Plat-Book for *Marion*

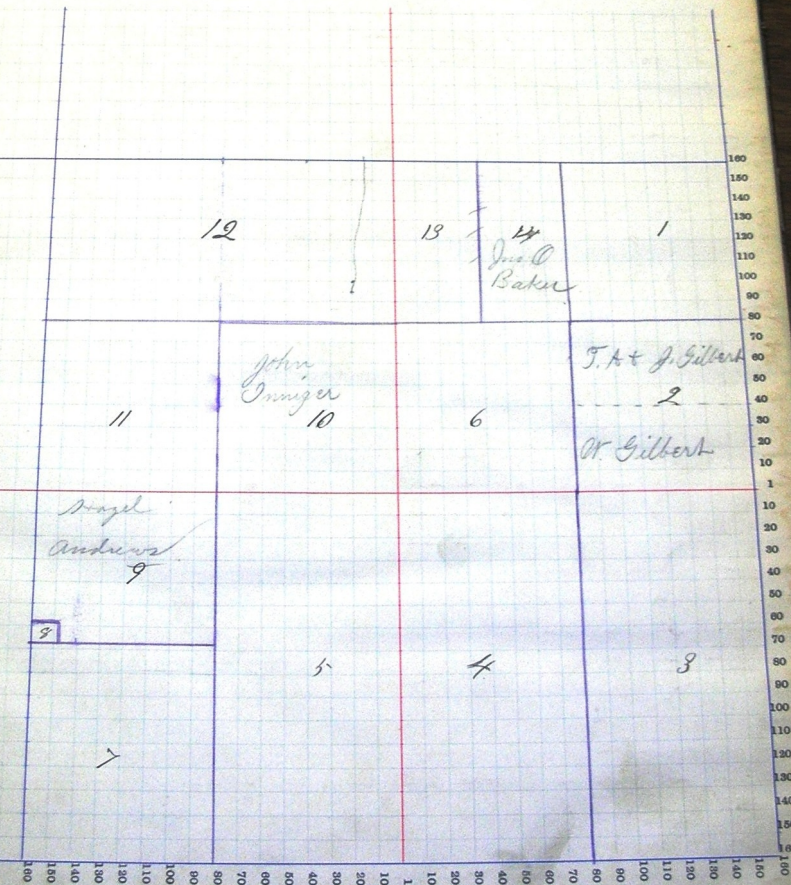
Township No.

NAME OF OWNER.	Number on Plat.	DESCRIPTION.	Section.	Township.	Range.	Acres.	Hundredths.	Value of Land.	Value of Improvements.	Value of Land and Improvements.
Huffman A & M E	1	N E	N 6	2	26	14	38 18	400	250	450
Sibert S Mc Jones	2	S E	N 6	"	"	"	40	400	50	450
Eby Lucrecia	3	E 1/2	S 6	"	"	"	80	860	240	1100
Huffman J D	4	W 1/2	S 6	"	"	"	80	1200		1200
Mullen Jehu	5	E 1/2	SW	"	"	"	80	840	125	1065
"	6	SW	N 6	"	"	"	40	1100		400
Hardnum M Frank	7	S 1/4 W 1/2	SW	"	"	"	46	550	150	700
Brandberry Isaac	8	1/4 W 1/2	SW	"	"	"	1	12	8	20
Mullen Jacob	9	1/4 W 1/2	SW	"	"	"	33	330	90	420
Snizer John	10	S E	NW	"	"	"	38 18	400	60	460
Zuecher Paul	11	SW	NW	"	"	"	40	480	80	560
Zuecher Gottlieb	12	N 1/2	NW	"	"	"	76 25	900	100	1000
Paker John C	13	W 1/2 NW	N 6	"	"	"	18	180		180
Marty Jerry R	14	E 1/2 NW	N 6	"	"	"	18 14	180		180

SECTION No. 2

Congressional Township No. 26 R. 14 E

Scale—Forty rods to an inch, or ten rods to a space, Congress Land, which is one mile square for a section.
 Number of acres in this section, according to the United States Survey, _____



Adams

COUNTY, INDIANA, 1897

Assessor's Plat-Book for

Monroe

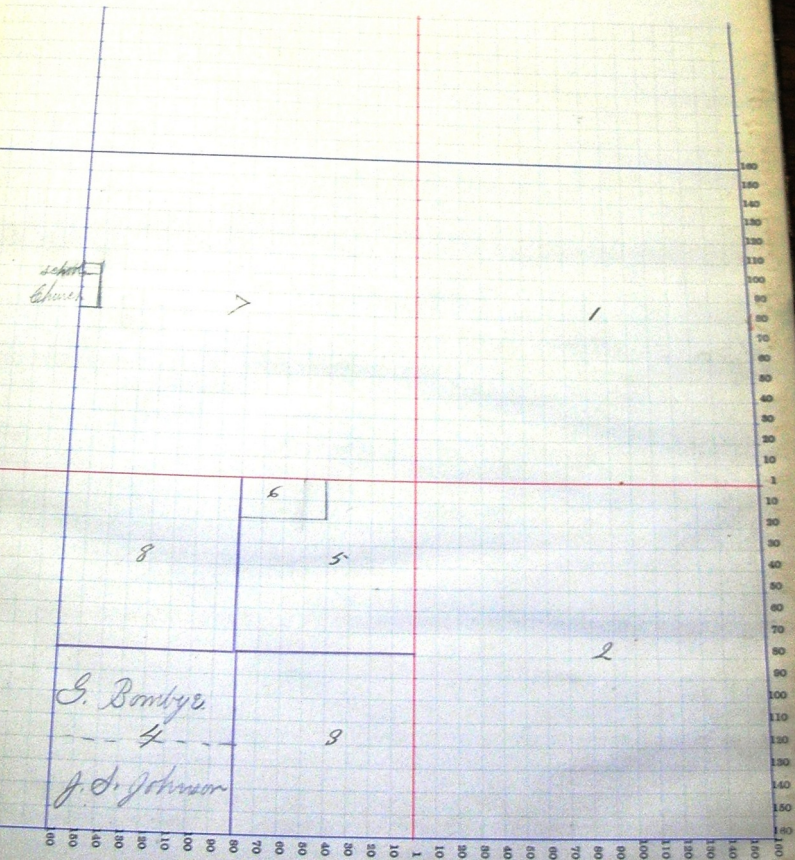
Township. No.

NAMES OF OWNERS.	Number of Plat.	DESCRIPTION.	Section.	Township.	Range.	Acres.	Hundredths.	Value of Lands.	Value of Improvements.	Value of Lands and Improvements.
<i>Kuttman J D</i>	<i>1</i>	<i>N 6</i>	<i>3</i>	<i>26</i>	<i>14</i>	<i>160</i>		<i>2560</i>		<i>2560</i>
<i>Collins & Smith</i>	<i>2</i>	<i>S 6</i>	"	"	"	<i>160</i>		<i>3000</i>		<i>3000</i>
<i>Hendsicks John</i>	<i>3</i>	<i>S 6</i>	<i>SW</i>	"	"	<i>40</i>		<i>520</i>	<i>300</i>	<i>820</i>
<i>Wrick David C</i>	<i>4</i>	<i>SW</i>	<i>SW</i>	"	"	<i>40</i>		<i>520</i>	<i>60</i>	<i>580</i>
<i>Wrick Henry</i>	<i>5</i>	<i>N 6</i>	<i>S. W.</i>	"	"	<i>35</i>		<i>420</i>	<i>80</i>	<i>500</i>
<i>Wrick Cordelia</i>	<i>6</i>	<i>N 6</i>	<i>SW</i>	"	"	<i>4</i>	<i>80</i>	<i>55</i>	<i>5</i>	<i>60</i>
<i>Studebaker David</i>	<i>7</i>	<i>N 6</i>	<i>N. W.</i>	"	"	<i>137</i>		<i>2700</i>	<i>500</i>	<i>3200</i>
<i>22</i>	<i>21</i>	<i>8</i>	<i>N W</i>	<i>SW</i>	"	<i>40</i>		<i>550</i>		<i>550</i>

SECTION No. 9

Congressional Township No. 26, R. 146

Scale—Forty rods to an inch, or ten rods to a space. Congress Land, which is one mile square for a section.
Number of acres in this section, according to the United States Survey.



Adams

COUNTY, INDIANA, 1891

Assessor's Plat-Book for *Monroe*

Township No.

NAMES OF OWNERS	Number of Acs.	DESCRIPTION.	Section	Township	Range	Acres.	Headlands.	Value of Land.	Value of Improvements.	Value of Land and Improvements.
<i>Wisher Joseph</i>	1	<i>pt. N E</i>	<i>N E</i>	A	2	14	15 38	300	30	
<i>Sackell Cyrus</i>	2	<i>pt. E</i>	<i>S E</i>	"	"	"	56	280	200	480
<i>Sells Geo. L</i>	3	<i>N</i>	<i>S E</i>	"	"	"	49 30	700	175	875
"	4	<i>S E</i>	<i>S W</i>	"	"	"	48	560	160	720
<i>Kiblick Wm. H</i>	5	<i>pt</i>	<i>S E</i>	"	"	"	44	280	150	430
<i>Johnson Michael</i>	6	<i>pt. N E</i>	<i>S W</i>	"	"	"	38 25	480	60	540
<i>Kanungatun John A</i>	7	<i>pt. N E</i>	<i>S W</i>	"	"	"	35	10	20	30
<i>Wagner John</i>	8	<i>pt. W</i>	<i>S W</i>	"	"	"	40	480	160	640
<i>Wagner Eli</i>	9	<i>pt. W</i>	<i>S W</i>	"	"	"	40	480	220	700
<i>Tamm Wm.</i>	10	<i>pt. S E</i>	<i>S W</i>	"	"	"	30	360	75	435
<i>Hughes Abraham</i>	11	<i>pt. E</i>	<i>S W</i>	"	"	"	10	120	30	150
<i>Jacob J. West &</i>	12	<i>pt. S E</i>	<i>N E</i>	"	"	"	15	150	20	170
<i>Tamm J. A.</i>	13	<i>pt. N E</i>	<i>N W</i>	"	"	"	25	300	40	350
<i>Ward J. Perry Wm. Jr</i>	14	<i>pt. N E</i>	<i>N W</i>	"	"	"	64	800	200	1100
<i>Hendricks John</i>	15	<i>pt. N E</i>	<i>N E</i>	"	"	"	32	480	60	540
<i>Ward J. Perry Abraham</i>	16	<i>pt. E</i>	<i>N E</i>	"	"	"	54	800	140	940
<i>Wm. Swallow</i>	17	<i>pt. N E</i>	<i>N E</i>	"	"	"	3	60	150	210
<i>Hendricks J. W.</i>	18	<i>pt. N E</i>	<i>N E</i>	"	"	"	1 21	50	30	80
<i>Everhart Lydia A</i>	19	<i>pt. S E</i>	<i>N E</i>	"	"	"	75	60	40	100
<i>Kesler Fred</i>	20	<i>pt. N E</i>	<i>N E</i>	"	"	"	33	30	200	230
<i>Andrew Thos. H</i>	21	<i>pt. N E</i>	<i>N E</i>	"	"	"	50	50	200	250
<i>Andrew Nathan</i>	22	<i>pt. N E</i>	<i>N E</i>	"	"	"	48	35	35	70
<i>Hendricks Geo. B</i>	23	<i>pt. N E</i>	<i>N E</i>	"	"	"	25	25		25
<i>Hendricks Miller</i>	24	<i>pt. S W</i>	<i>S E</i>	"	"	"	1	20	30	50

SECTION No. 7

Congressional Township No. 26, R. 14E

Scale—Forty rods to an inch, or ten rods to a space, Congress Land, which is one mile square for a section.
 Number of acres in this section, according to the United States Survey.

