

Adams

## COUNTY, INDIANA, 1891

Assessor's Plat-Book for

Morrow

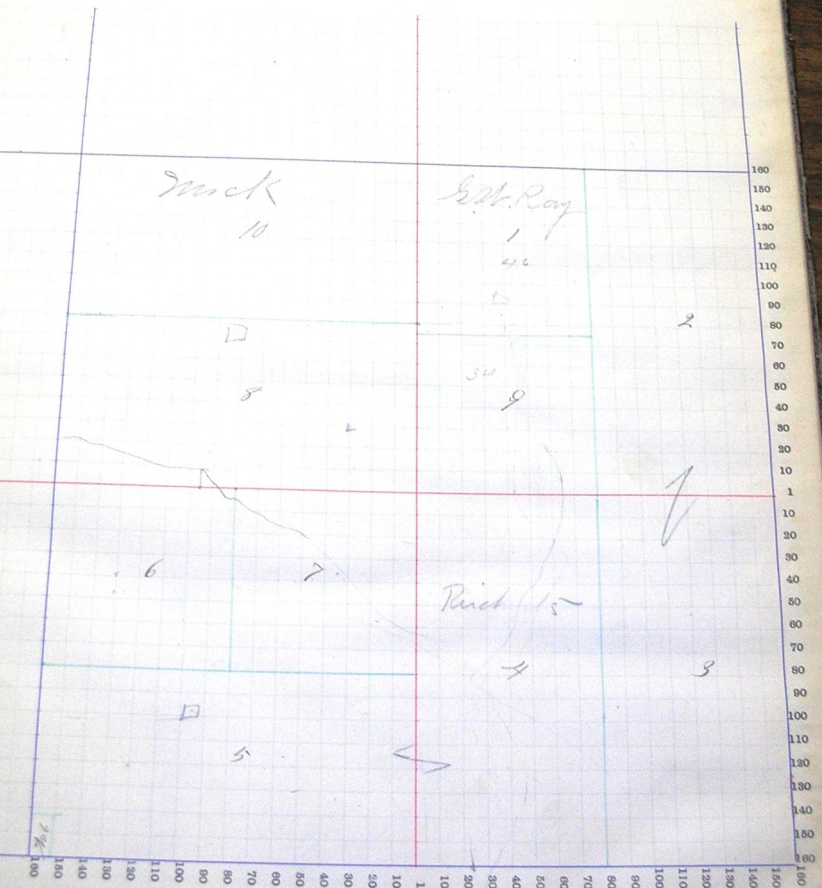
Township No.

NAMES OF OWNERS.	Number on Plat.	DESCRIPTION.	Section.	Township.	Range.	Acres.	Hundredths.	Value of Lands.	Value of Improvements.	Value of Lands and Improvements.
Ray Lynn B	1	N 1/2 W 1/2 N 6	13	26	14	44		530	180	
Buss Rudovic	2	E 1/2 N 6	"	"	"	80		960		720
" "	3	E 1/2 S 6	"	"	"	80		960	320	1280
Ray Levi	4	W 1/2 S 6	"	"	"	80		860	40	1000
Richard G. C.	5	1/2 S. W.	"	"	"	78		1100		860
Jacobs Kelita	6	N W S W	"	"	"	40		500	200	1300
Baker Jacob	7	N 8 S W	"	"	"	40		480	100	600
Lee Nancy	8	S 1/2 N W	"	"	"	80		1060		480
Boan John	9	S 1/2 W 1/2 N 6	"	"	"	36		375	340	1400
Week Frank	10	W 1/2 N W	"	"	"	80		1040	40	210
									250	1280

# SECTION No. 13

Congressional Township No. 26 R. 14

Scale—Forty rods to an inch, or ten rods to a space. Congress Land, which is one mile square for a section.  
Number of acres in this section, according to the United States Survey.



*Adams*

## COUNTY, INDIANA, 1891

Assessor's Plat-Book for

*Wenice*

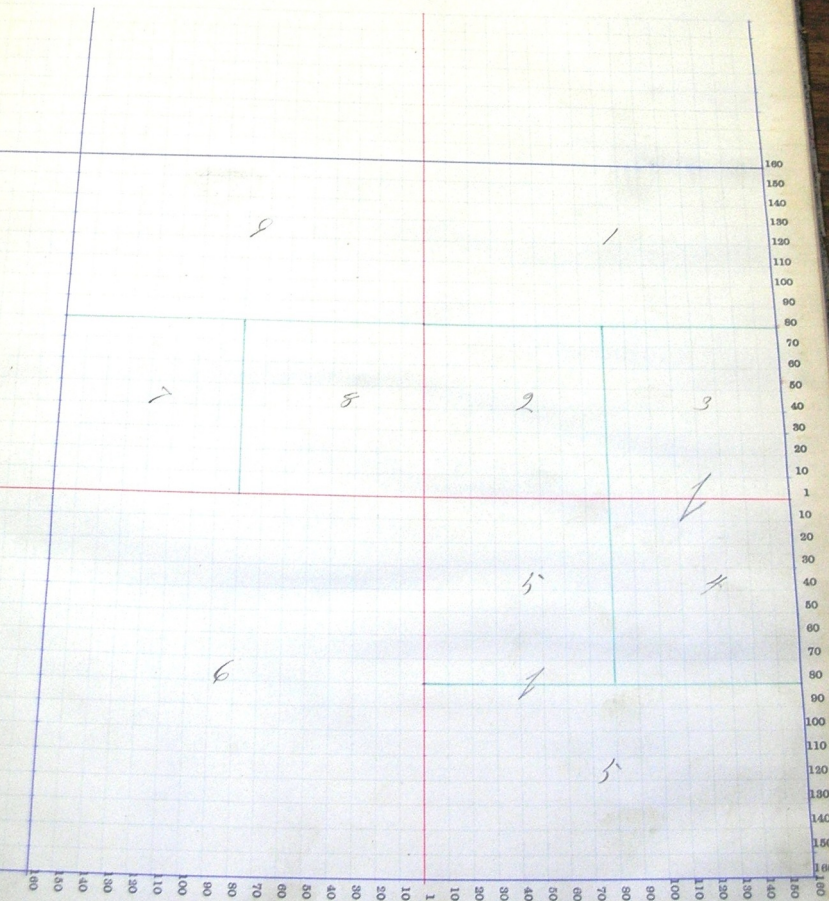
Township, No.

NAMES OF OWNERS.	Number on Plat.	DESCRIPTION.		Section.	Township.	Range.	Acres.	Handreds.	Value of Lands.	Value of Improvements.	Value of Lands and Improvements.
<i>Pogue Joseph</i>	1	<i>N<math>\frac{1}{2}</math></i>	<i>NE</i>	<i>14</i>	<i>25</i>	<i>14</i>	<i>80</i>		<i>980</i>	<i>300</i>	<i>1280</i>
<i>Hobbs Perry W</i>	2	<i>S<math>\frac{1}{2}</math> W</i>	<i>NE</i>	<i>14</i>	<i>25</i>	<i>14</i>	<i>40</i>		<i>480</i>	<i>80</i>	<i>560</i>
<i>Daugherty A. B.</i>	3	<i>SE</i>	<i>NE</i>	"	"	"	<i>40</i>		<i>520</i>	<i>120</i>	<i>640</i>
"	4	<i>NE</i>	<i>SE</i>	"	"	"	<i>40</i>		<i>420</i>	<i>220</i>	<i>640</i>
<i>Murphy J. W.</i>	5	<i>pt.</i>	<i>SE</i>	"	"	"	<i>120</i>		<i>1640</i>	<i>360</i>	<i>2000</i>
<i>Harris S. T.</i>	6		<i>S<math>\frac{1}{2}</math> W</i>	"	"	"	<i>160</i>		<i>2080</i>	<i>480</i>	<i>2560</i>
<i>Garner Antony</i>	7	<i>S<math>\frac{1}{2}</math> W</i>	<i>N<math>\frac{1}{2}</math> W</i>	"	"	"	<i>40</i>		<i>480</i>	<i>125</i>	<i>605</i>
<i>Quinn Effie A. W.</i>	8	<i>SE</i>	<i>N<math>\frac{1}{2}</math> W</i>	"	"	"	<i>40</i>		<i>400</i>	<i>80</i>	<i>480</i>
<i>Christman Gottlieb</i>	9	<i>N<math>\frac{1}{2}</math></i>	<i>N<math>\frac{1}{2}</math> W</i>	"	"	"	<i>80</i>		<i>980</i>	<i>140</i>	<i>1120</i>

## SECTION No. 14

Congressional Township No. 26, R. 14

Scale—Forty rods to an inch, or ten rods to a space, Congress Land, which is one mile square for a section.  
 Number of acres in this section, according to the United States Survey,



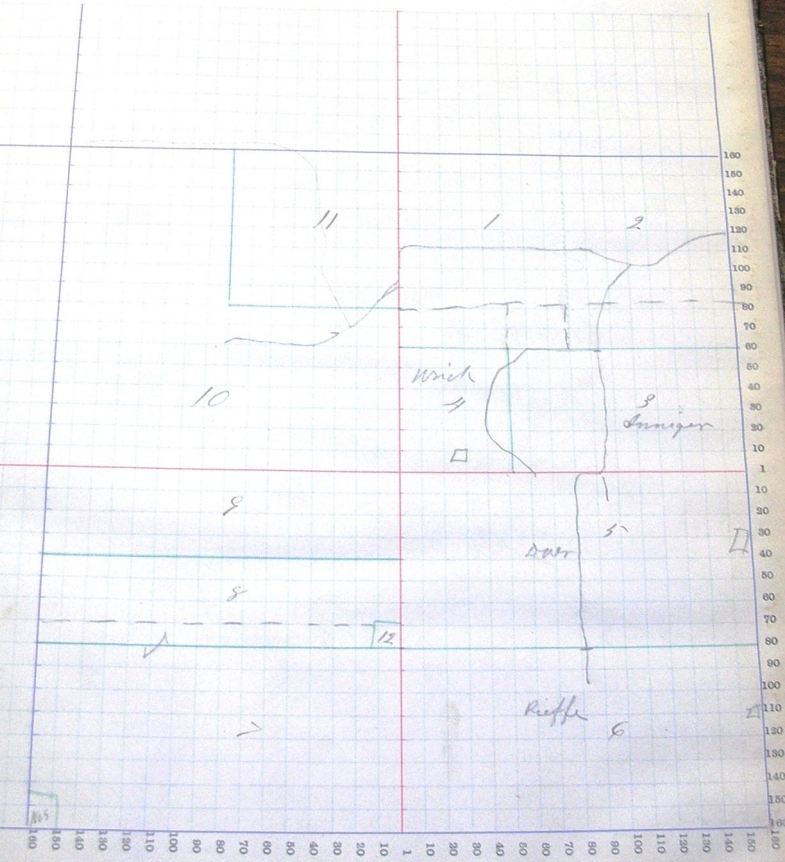




SECTION No. 15

Congressional Township No. 26, R. 14

Scale—Forty rods to an inch, or ten rods to a space, Congress Land, which is one mile square for a section.  
Number of acres in this section, according to the United States Survey.





## SECTION No. 16

Congressional Township No. 26, R. 14

Scale—Forty rods to an inch, or ten rods to a space, Congress Land, which is one mile square for a section.  
 Number of acres in this section, according to the United States Survey.

