

Adams

COUNTY, INDIANA, 189

Assessor's Plat-Book for

Monroe

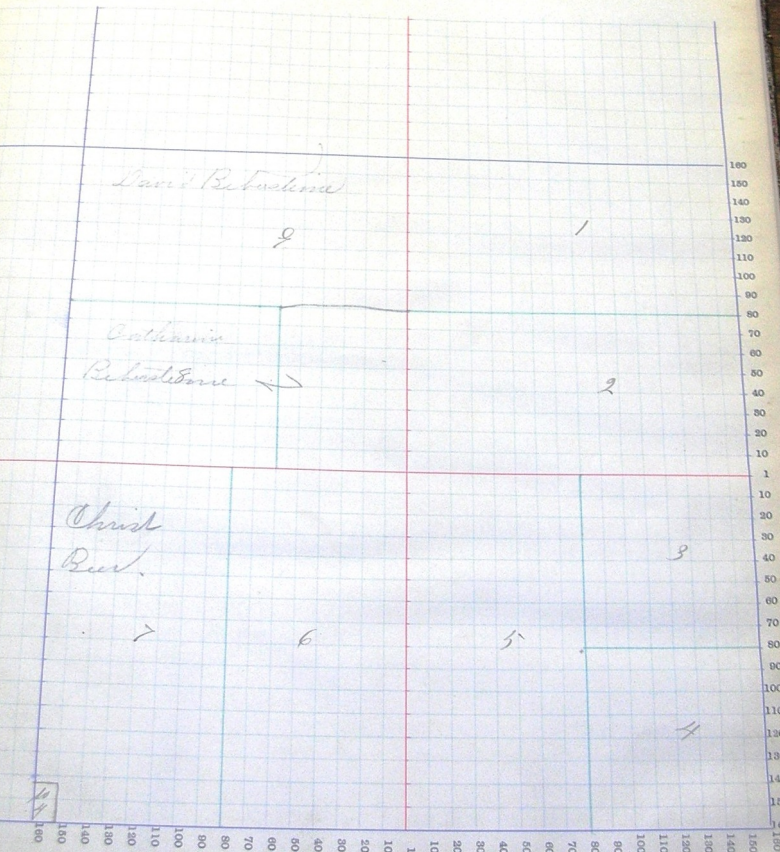
Township. No

NAMES OF OWNERS	Number on Plat.	DESCRIPTION.	Section.	Township.	Range.	Acres.	Hundredths.	Value of Land.	Value of Improvements.	Value of Land and Improvements.
<i>Schwartz David</i>	1	<i>NE</i>	<i>17</i>	<i>21 N</i>	<i>80</i>					
<i>Schwartz Joseph A</i>	2	<i>SE</i>	<i>NE</i>	"	"	<i>80</i>		<i>1120</i>	<i>320</i>	<i>1440</i>
<i>Eme Peter</i>	3	<i>NE</i>	<i>SE</i>	"	"	<i>40</i>		<i>1040</i>	<i>320</i>	<i>1360</i>
<i>Graber Joseph</i>	4	<i>SE</i>	<i>SE</i>	"	"	<i>40</i>		<i>560</i>	<i>140</i>	<i>700</i>
<i>Maglin Frank</i>	5	<i>W 1/2</i>	<i>SE</i>	"	"	<i>80</i>		<i>1120</i>	<i>100</i>	<i>1220</i>
<i>Schwartz Jacob</i>	6	<i>E 1/2</i>	<i>SW</i>	"	"	<i>80</i>		<i>1320</i>	<i>500</i>	<i>1820</i>
<i>Steen Jacob</i>	7	<i>W 1/2</i>	<i>SW</i>	"	"	<i>79</i>		<i>1100</i>	<i>260</i>	<i>1360</i>
<i>Berthstein David</i>	8	<i>SW 1/4</i>	<i>NW</i>	"	"	<i>50</i>		<i>600</i>	<i>110</i>	<i>710</i>
<i>Berthstein Ab. ed.</i>	9	<i>SE</i>	<i>NW</i>	"	"	<i>110</i>		<i>1325</i>	<i>400</i>	<i>1725</i>

SECTION No. 17

Congressional Township No. 26, R. 14

*Scale—Forty rods to an inch, or ten rods to a space, Congress Land, which is one mile square for a section.
Number of acres in this section, according to the United States Survey.*



Adams

COUNTY, INDIANA, 1891

Assessor's Plat-Book for

Merrill

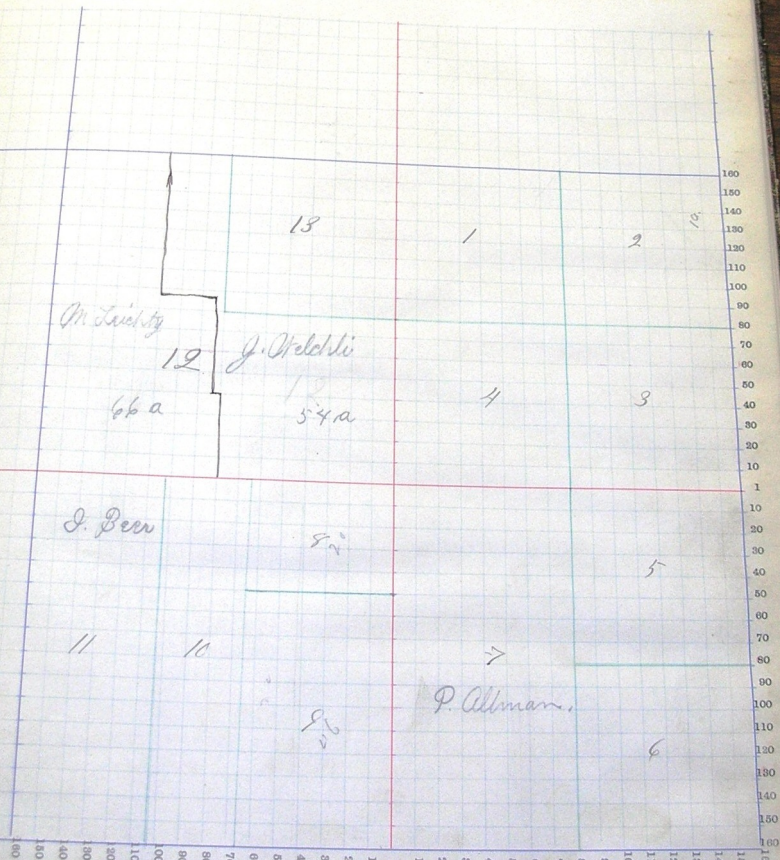
Township, No.

NAMES OF OWNERS.	Number on Plat.	DESCRIPTION.		Section.	Township.	Range.	Acres.	Handrails.	Value of Lands.	Value of Improvements.	Value of Lands and Improvements.
Geo August	1	SW	NE	18	26	14	40		460	80	540
Richard J. F.	2	NE	NE	"	"	"	40		440	85	525
Burns Christian	3	SE	NE	"	"	"	40		480	170	650
Braunner Fred	4	SW	NE	"	"	"	40		480	120	600
Howard Louis	5	NE	SE	"	"	"	40		560	160	720
Henry Peter	6	SE	SE	"	"	"	40		580	160	740
Allison Elizabeth	7	W $\frac{1}{2}$	SE	"	"	"	80		1040	260	1300
Nichols George	8	pt E $\frac{1}{2}$	SW	"	"	"	20		240	40	280
Nichols Augustine	9	pt E $\frac{1}{2}$	SW	"	"	"	46		580	200	780
Washburne Madeline	10	W $\frac{1}{2}$ pt	SW	"	"	"	33		370	30	400
Kunbarum Abraham	11	pt W $\frac{1}{2}$	SW	"	"	"	58		780		780
Leichty & Walchli	12	pt	SW	"	"	"	120		1440	240	1680
Rich Joseph	13	NE	SW	"	"	"	40		480	160	640

SECTION No. 18

Congressional Township No. 26 R. 14

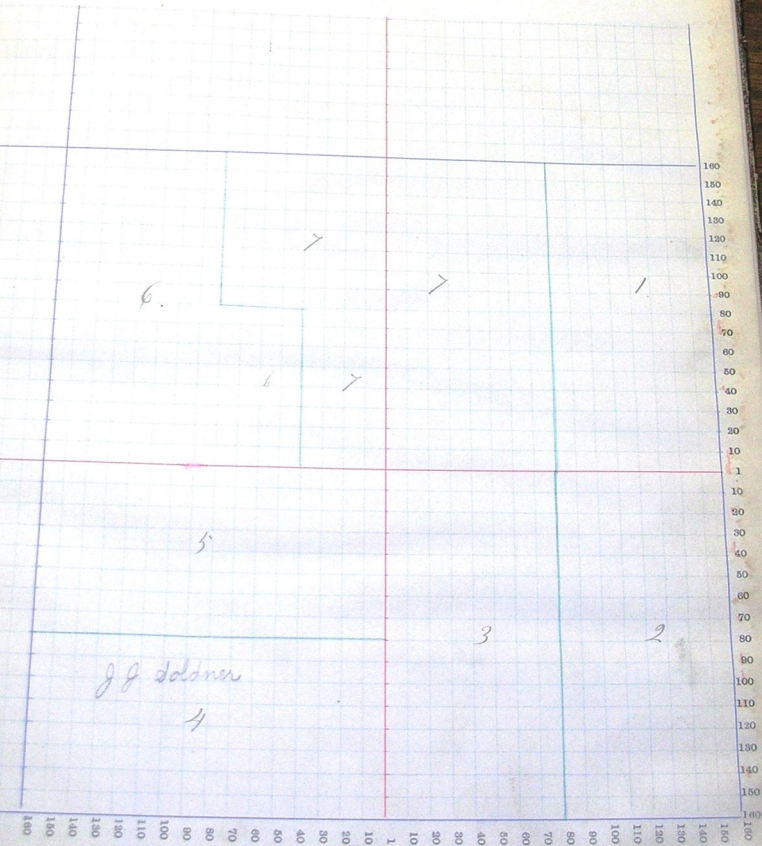
Scale—Forty rods to an inch, or ten rods to a space, Congress Land, which is one mile square for a section.
 Number of acres in this section, according to the United States Survey, _____



SECTION No. 19

Congressional Township No. 26, R. 14

Scale—Forty rods to an inch, or ten rods to a space, Congress Land, which is one mile square for a section.
Number of acres in this section, according to the United States Survey, _____



Adams

COUNTY, INDIANA, 189

Assessor's Plat-Book for

Morse

Township, No.

NAMES OF OWNERS.	Number on Plat.	DESCRIPTION.	Section.	Township.	Range.	Acres.	Hundredths.	Value of Lands.	Value of Improvements.	Value of Lands and Improvements.
Schwartz Joseph	1	NE	20	26	14	160		2400	300	3200
Ellenberger Henry	2	SE	"	"	"	40		600	50	650
Walker John	3	SE	"	"	"	40		560	60	620
Krusbaum Benj.	4	SW	"	"	"	40		620	140	760
Long James	5	E 1/2	"	"	"	80		1400	300	1700
Mogelin Frank	6	SW	"	"	"	80		1600	440	2050
Beuringastner Abe	7	SE	"	"	"	80		1550	650	2200
" "	8	SW	"	"	"	40		620	40	660
Mogelin James	9	SW	"	"	"	40		560	80	650
Schwartz Jacob	10	NE	"	"	"	40		560	120	680

SECTION No. 20

Congressional Township No. 26, R. 14

Scale—Forty rods to an inch, or ten rods to a space, Congress Land, which is one mile square for a section.
Number of acres in this section, according to the United States Survey, _____

