

Normal

COUNTY, INDIANA, 189

Assessor's Plat-Book for

Normal

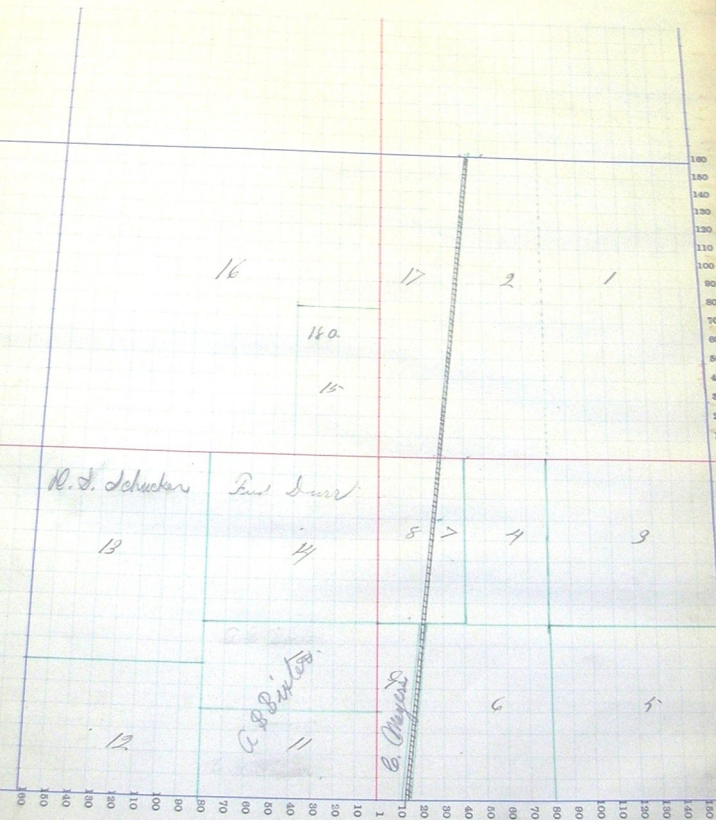
Township, No.

NAMES OF OWNERS.	Number on Plat.	DESCRIPTION.	Section.	Township.	Range.	Acres.	Headlands.	Value of Lands.	Value of Improvements.	Value of Lands and Improvements.
<i>Shuber Mathias</i>	1	<i>1/2 NE</i>	<i>NE</i>	<i>21</i>	<i>24</i>	<i>48</i>	<i>50</i>	<i>1280</i>	<i>230</i>	
" "	2	<i>1/2 NW</i>	<i>NE</i>	"	"	<i>44</i>	<i>50</i>	<i>700</i>	<i>50</i>	<i>1560</i>
<i>Schuyler J. T.</i>	3	<i>NE</i>	<i>SE</i>	"	"	<i>40</i>	"	<i>640</i>	<i>140</i>	<i>780</i>
" "	4	<i>1/2 NW</i>	<i>SE</i>	"	"	<i>18</i>	"	<i>360</i>	<i>40</i>	<i>400</i>
<i>Lynchbill Christ</i>	5	<i>SE</i>	<i>SE</i>	"	"	<i>40</i>	"	<i>640</i>	<i>160</i>	<i>800</i>
<i>Winnan John</i>	6	<i>1/2 SW</i>	<i>SE</i>	"	"	<i>30</i>	<i>58</i>	<i>480</i>	<i>180</i>	<i>660</i>
<i>Russell John</i>	7	<i>1/2 NW</i>	<i>SE</i>	"	"	<i>8</i>	"	<i>130</i>	<i>20</i>	<i>150</i>
" "	8	<i>1/2 NW</i>	<i>SE</i>	"	"	<i>8</i>	<i>25</i>	<i>160</i>	<i>30</i>	<i>190</i>
<i>Weyers E. Miller</i>	9	<i>1/2 SW</i>	<i>SE</i>	"	"	<i>7</i>	"	<i>100</i>	<i>100</i>	<i>200</i>
<i>Ward A. B.</i>	10	<i>1/2 SE</i>	<i>SW</i>	"	"	<i>20</i>	"	<i>360</i>	<i>80</i>	<i>440</i>
<i>Musbaum Christ</i>	11	<i>1/2 SE</i>	<i>SW</i>	"	"	<i>20</i>	"	<i>320</i>	<i>80</i>	<i>400</i>
<i>Staufer Peter</i>	12	<i>1/2 NW</i>	<i>SW</i>	"	"	<i>30</i>	"	<i>500</i>	<i>120</i>	<i>620</i>
<i>Ward Hunt</i>	13	<i>1/2 NW</i>	<i>SW</i>	"	"	<i>40</i>	"	<i>740</i>	<i>200</i>	<i>940</i>
<i>Ward Chas. Wm. Geo</i>	14	<i>NE</i>	<i>SW</i>	"	"	<i>40</i>	"	<i>600</i>	<i>100</i>	<i>700</i>
<i>Ward A. C.</i>	15	<i>1/2 SE</i>	<i>NW</i>	"	"	<i>18</i>	"	<i>270</i>	<i>80</i>	<i>350</i>
<i>Schwarz Peter</i>	16	<i>1/2</i>	<i>NW</i>	"	"	<i>142</i>	"	<i>2000</i>	<i>900</i>	<i>2900</i>
" "	17	<i>1/2 NW</i>	<i>NE</i>	"	"	<i>30</i>	<i>40</i>	<i>420</i>	<i>30</i>	<i>450</i>

SECTION No. 21

Congressional Township No. 16, R. 14.

Scale—Forty rods to an inch, or ten rods to a space, Congress Land, which is one mile square for a section.
 Number of acres in this section, according to the United States Survey.



Adams

COUNTY, INDIANA, 1891

Assessor's Plat-Book for *Marion*

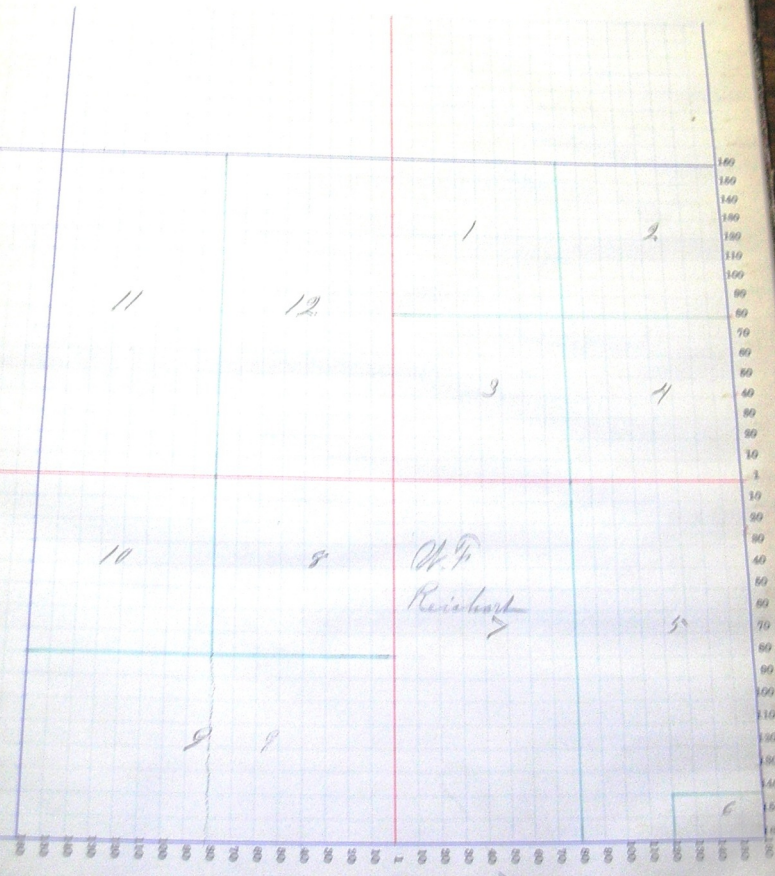
Township No.

NAMES OF OWNERS	Number on Plat.	DESCRIPTION.		Section	Township	Range	Acres.	Woodlands	Value of Lands.	Value of Improvements.	Value of Lands and Improvements.
Burkell Mary	1	NE	NE	22	14	40	520	80	600		
Hendricks Wm. P.	2	NE	NE	"	"	40	520	120	640		
Harris B. P.	3	SW	NE	"	"	40	560	80	640		
Burkell Berrie O. ^W	4	SE	NE	"	"	40	560	280	840		
Hynn David	5	NE	SE	"	"	25	1000	140	1140		
Glancy Cathie	6	NE	SE	"	"	5	20	150	230		
Ray Levi	7	W	SE	"	"	80	1120	200	1320		
Lamm H. H.	8	NE	SW	"	"	40	520	180	700		
Spurgeon Simon	9	SE	SW	"	"	40	640	60	700		
" " " ³¹	9	SW	SW	"	"	40	660	240	900		
Schug Wm. J.	10	NW	SW	"	"	40	600	40	640		
Sticker Andrew	11	W	SW	"	"	80	1280	400	1680		
Harris Julia C.	12	E	NW	"	"	80	1120	320	1440		

SECTION No. 22

Congressional Township No. 26 R. 14

Scale—Forty rods to an inch, or ten rods to a space, Congress Land, which is one mile square for a section.
Number of acres in this section, according to the United States Survey,



Adams COUNTY, INDIANA, 1891

Assessor's Plat-Book for

Morone

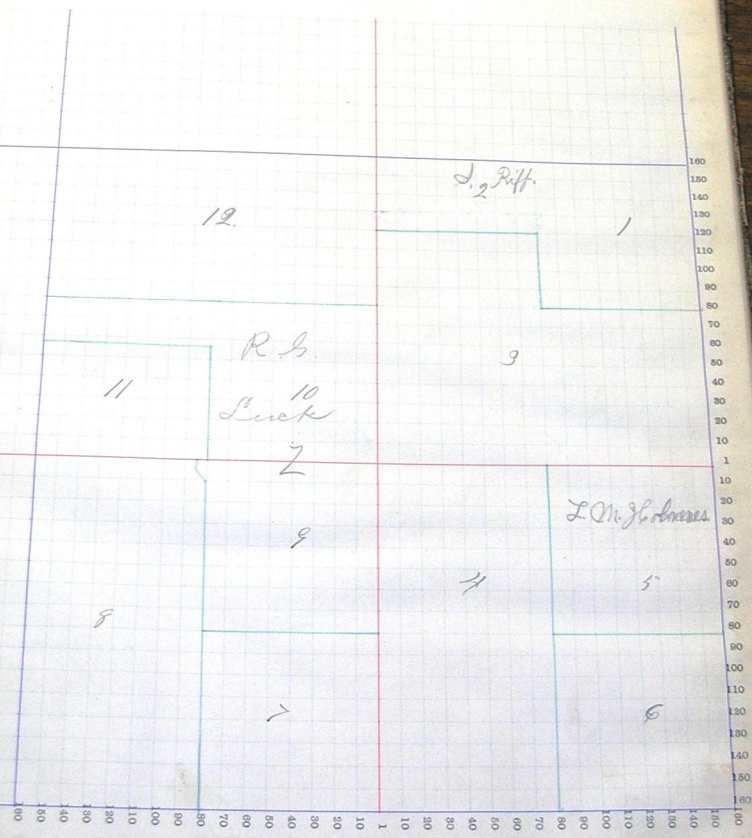
Township No.

NAMES OF OWNERS.	Number on Plat.	DESCRIPTION.	Section.	Township.	Range.	Acres.	Hundredths.	Value of Land.	Value of Improvements.	Value of Land and Improvements.
Riff John	1	N6	N6	23	26	14	40	600	180	
"	2	N1/4	N6	"	"	"	20	220		280
Weyer Mary J	3	pt	N6	"	"	100		1400	280	270
Rimbal Willie	4	W/2	SE	"	"	80		1120	280	1680
Holmes John W. L. W.	5	N6	SE	"	"	40		525	75	1400
Kerr D. W.	6	SE	SE	"	"	40		520	100	600
"	7	SE	SW	"	"	40		560	400	620
Schuman Jacob J	8	W/2	SW	"	"	78	50	1155	550	960
Hobbs Boston A	9	pt	SW	"	"	40		560	200	1735
"	10	pt	NW	"	"	53		680	50	760
Brinkell Jennie <i>Est</i>	11	pt SW	NW	"	"	27		380	140	760
Depp David	12	N/2	NW	"	"	80		1120	160	520

SECTION No. 23

Congressional Township No. 26, R. 14

Scale—Forty rods to an inch, or ten rods to a space. Congress Land, which is one mile square for a section.
Number of acres in this section, according to the United States Survey.



SECTION No. 24

Congressional Township No. 26 R. 14

Scale—Fifty rods to an inch, or ten rods to a space, Congress Land, which is one mile square for a section.
 Number of acres in this section, according to the United States Survey.

