

Adams

COUNTY, INDIANA, 189

Assessor's Plat-Book for *Adams*

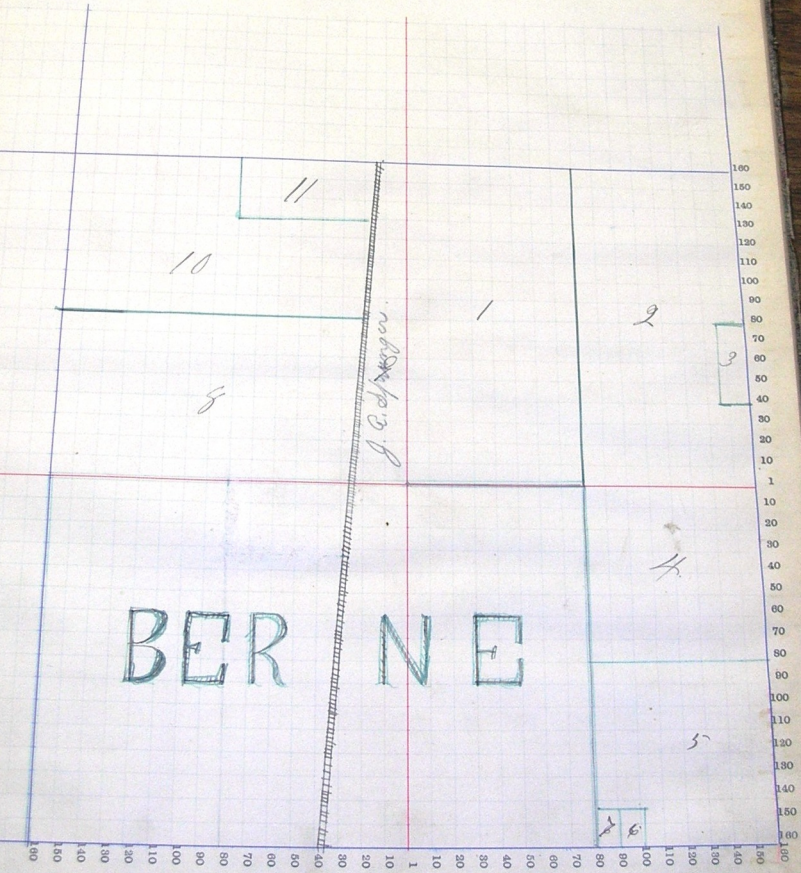
Township, No.

NAMES OF OWNERS.	Number on Plat.	DESCRIPTION.	Section.	Township.	Range.	Acres.	Hundredths.	Value of Lands.	Value of Improvements.	Value of Lands and Improvements.
<i>Cery Dugabill</i>	1	<i>W^{1/2} S^{1/2} S^{1/2}</i>	33	24	14	80		2200	600	2800
<i>Adams G. V.</i>	2	<i>N^{1/2} E^{1/2} S^{1/2}</i>	"	"	"	77		2100	560	2660
<i>Adams A. S.</i>	3	<i>N^{1/2} S^{1/2} S^{1/2}</i>	"	"	"	9		75	140	215
<i>Adams A. J.</i>	4	<i>S^{1/2} S^{1/2}</i>	"	"	"	40		1200	280	1480
<i>Adams W. E.</i>	5	<i>N^{1/2} S^{1/2} S^{1/2}</i>	"	"	"	38		1140	260	1400
<i>Adams Philimon</i>	6	<i>N^{1/2} S^{1/2} S^{1/2}</i>	"	"	"	1		40	160	200
<i>Adams Isaac</i>	7	<i>N^{1/2} S^{1/2} S^{1/2}</i>	"	"	"	1		40	160	200
<i>Leahy Samuel</i>	8	<i>N^{1/2} S^{1/2} A^{1/2} W.</i>	"	"	"	71		2000	280	2280
<i>Adams Peter A.</i>	9	<i>N^{1/2} E^{1/2} S^{1/2} W.</i>	"	"	"	17	56	480	180	660
<i>Wintberg David</i>	10	<i>N^{1/2} A^{1/2} W.</i>	"	"	"	54	75	1375	200	1575
<i>Burkhalter Peter</i>	11	<i>N^{1/2} E^{1/2} A^{1/2} W.</i>	"	"	"	12	55	315	35	350

SECTION No. 23

Congressional Township No. 26 R. 14

Scale—Forty rods to an inch, or ten rods to a space, Congress Land, which is one mile square for a section.
Number of acres in this section, according to the United States Survey.



BERNE

J. E. dyker

10

8

11

1

2

3

4

5

6

100
150
140
130
120
110
100
90
80
70
60
50
40
30
20
10
1
10
20
30
40
50
60
70
80
90
100
110
120
130
140
150
160

100
200
300
400
500
600
700
800
900
1000
1100
1200
1300
1400
1500
1600

Adams

COUNTY, INDIANA, 1891

Assessor's Plat-Book for *Adams*

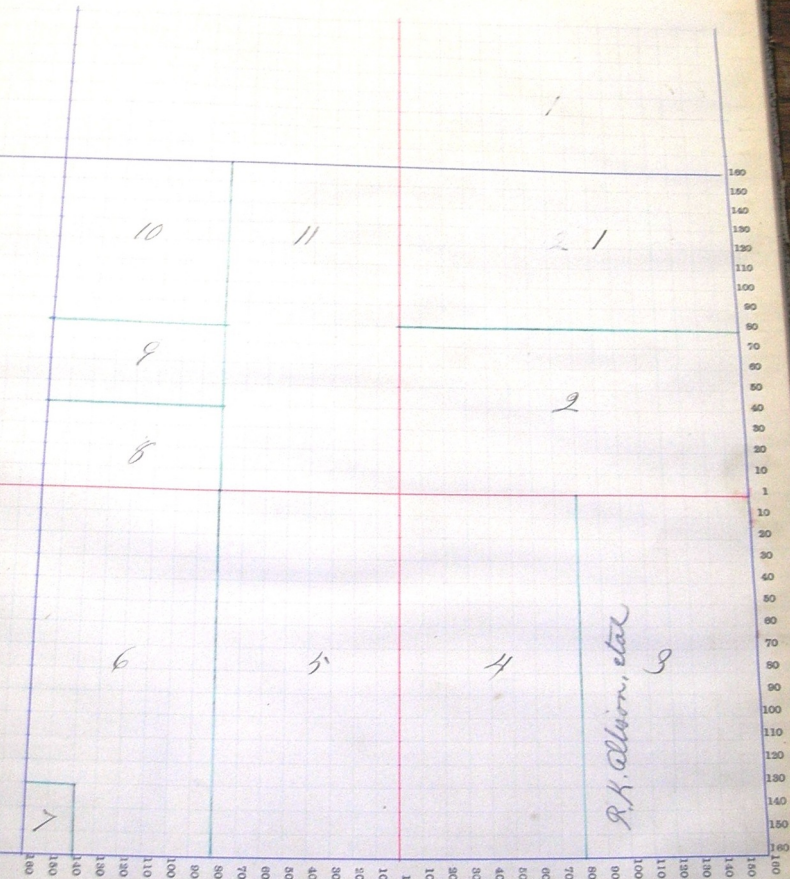
Township No.

NAMES OF OWNERS	Number on Plat.	DESCRIPTION.		Section.	Township.	Range.	Acres.	Handwritten	Value of Land.	Value of Improvements.	Value of Taxes and Assessments.
<i>Halegoue A.M.</i>	1	<i>N 1/2</i>	<i>NE</i>	<i>24</i>	<i>24</i>	<i>14</i>	<i>80</i>				
<i>Maxim Peter</i>	2	<i>SE</i>	<i>NE</i>	"	"	"	<i>80</i>		<i>1600</i>	<i>240</i>	<i>1840</i>
<i>Smith Samuel</i>	3	<i>E 1/2</i>	<i>SE</i>	"	"	"	<i>80</i>		<i>1600</i>	<i>360</i>	<i>1960</i>
<i>Shannon David</i>	4	<i>W 1/2</i>	<i>SE</i>	"	"	"	<i>80</i>		<i>1760</i>	<i>240</i>	<i>2000</i>
<i>Goettchalk Andrew</i>	5	<i>E 1/2</i>	<i>SW</i>	"	"	"	<i>80</i>		<i>2000</i>	<i>500</i>	<i>2500</i>
<i>Quicker Daniel</i>	6	<i>pt W 1/2</i>	<i>SW</i>	"	"	"	<i>74</i>		<i>2000</i>	<i>300</i>	<i>2300</i>
<i>Goettchalk Andrew</i>	7	<i>SW cor</i>	<i>SW</i>	"	"	"	<i>5</i>		<i>1875</i>	<i>225</i>	<i>2100</i>
<i>Shannon A.J.</i>	8	<i>1/2 SW</i>	<i>NW</i>	"	"	"	<i>20</i>		<i>125</i>	<i>175</i>	<i>300</i>
<i>Shuman A.S.</i>	9	<i>N 1/2 SW</i>	<i>NW</i>	"	"	"	<i>20</i>		<i>500</i>		<i>500</i>
<i>Shuman Marie</i>	10	<i>NW</i>	<i>NW</i>	"	"	"	<i>40</i>		<i>460</i>	<i>40</i>	<i>500</i>
<i>Moser A.W.</i>	11	<i>E 1/2</i>	<i>NW</i>	"	"	"	<i>80</i>		<i>880</i>	<i>320</i>	<i>1200</i>
									<i>1280</i>	<i>240</i>	<i>1520</i>

SECTION No. 34

Congressional Township No. 26 R. 14

Scale—Forty rods to an inch, or ten rods to a space, Congress Land, which is one mile square for a section.
Number of acres in this section, according to the United States Survey.



Adams

COUNTY, INDIANA, 1891

Assessor's Plat-Book for *Adams*

Township. No.

NAMES OF OWNERS.	Number on Plat.	DESCRIPTION.	Section.	Township.	Range.	Acres.	Hundredths.	Value of Lands.	Value of Improvements.	Value of Lands and Improvements.
<i>McLain A H</i>	1	<i>1/4 NW NE</i>	35	26	14	45	74	560	170	730
<i>Hobgen Peter E</i>	2	<i>1/4 NW NE</i>	"	"	"	50		650	180	830
<i>" " "</i>	3	<i>1/4 E 1/2 NE</i>	"	"	"	24		330	40	370
<i>Jack Smith A M</i>	4	<i>1/4 NW NE</i>	"	"	"	23	34	230	25	255
<i>Ship A J</i>	5	<i>1/4 NE NE</i>	"	"	"	16	66	140	20	160
<i>Chas Henry</i>	6	<i>1/4 NE SE</i>	"	"	"	40		360	40	400
<i>Yancey Jacob S</i>	7	<i>1/4 NW SE</i>	"	"	"	80		700	80	780
<i>Waters D P</i>	8	<i>1/4 SE SE</i>	"	"	"	80		900	160	1060
<i>Clymer W G</i>	9	<i>1/4 E 1/2 SW</i>	"	"	"	20		280	20	300
<i>Smith Samuel</i>	10	<i>1/4 SW SW</i>	"	"	"	80		1600	240	1840
<i>Haruff H</i>	11	<i>1/4 NW SW</i>	"	"	"	80		1600	1000	2600
<i>VanCumber John</i>	12	<i>1/4 NW NW</i>	"	"	"	80		1600	240	1840
<i>Hobgen Peter</i>	13	<i>1/4 NW NW</i>	"	"	"	80		1600	1000	2600

SECTION No. 35

Congressional Township No. 26 R. 14

Scale—Forty rods to an inch, or ten rods to a space, Congress Land, which is one mile square for a section.
Number of acres in this section, according to the United States Survey, _____



13

1

12

2
sea.

3

Lake

Lambert

7

6

11

9

Area
10.
Billional

5

100
150
140
130
120
110
100
90
80
70
60
50
40
30
20
10
1
10
20
30
40
50
60
70
80
90
100
110
120
130
140
150
160
170
180

100
150
140
130
120
110
100
90
80
70
60
50
40
30
20
10
1

Adams

COUNTY, INDIANA, 1891

Assessor's Plat-Book for

Muncie

Township, No.

NAMES OF OWNERS	Number on Plat.	DESCRIPTION.		Section.	Township.	Range.	Acres.	Headrights.	Value of Lands.	Value of Improvements.	Value of Lands and Improvements.
Wiley Martha J	1	1/2 E 1/2	NW	26	26	14	10		100		
Wiley Samuel H	2	W 1/2	NE	2	"	"	80		480	100	125
Wiley Martha	3	E 1/2	NE	"	"	"	80		560	80	580
Charles Joseph	4	1/2 E 1/2	SE	"	"	"	70		840	25	640
Harlow Ely May	5	8/16 E 1/2	SE	"	"	"	10		120		555
Courway Ralph J	6	W 1/2	SE	"	"	"	80		840	150	120
"	7	E 1/2	SW	"	"	"	80		740	80	1020
Allen Win	8	E 1/2 W 1/2	SW	"	"	"	40		460	120	580
Baker Jacob	9	W 1/2 W 1/2	SW	"	"	"	40		420	130	550
Shirley A. J.	10	W 1/2	NW	"	"	"	30		270	40	310
Ely Margaret	11	1/2 W 1/2	NW	"	"	"	50		480	100	580
Oliver Silas	12	1/2 E 1/2	NW	"	"	"	44		440	100	540
Oliver Sarah E	13	1/2 E 1/2	NW	"	"	"	26 57	240	60	300	

SECTION No. 36

Congressional Township No. 26 R. 14

Scale—Forty rods to an inch, or ten rods to a space, Congress Land, which is one mile square for a section.
Number of acres in this section, according to the United States Survey.

