

Belmont

COUNTY, INDIANA, 1897

Assessor's Plat-Book for *Mount*

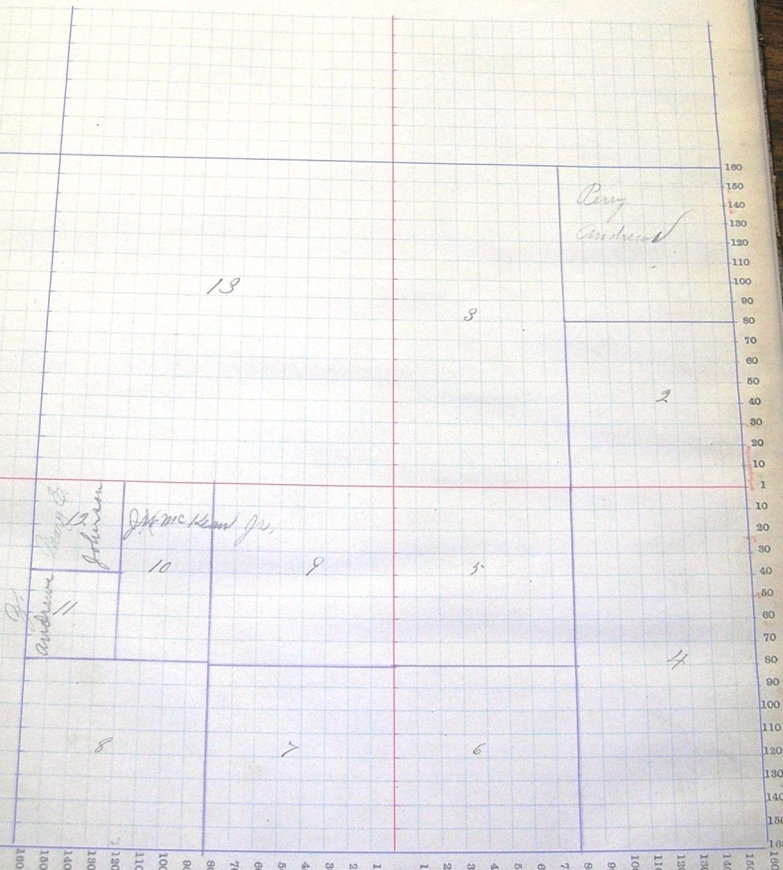
Township. No.

NAMES OF OWNERS	Number on Plat	DESCRIPTION.		Section	Township	Range	Acres	Standard	Value of Land	Value of Improvements	Value of Land and Improvements
<i>George Frank</i>	1	<i>NE</i>	<i>NE</i>	<i>9</i>	<i>20</i>	<i>14</i>	<i>30</i>		<i>360</i>	<i>40</i>	<i>400</i>
<i>Delch Catharine</i>	2	<i>SE</i>	<i>SE</i>	<i>9</i>	<i>"</i>	<i>"</i>	<i>40</i>		<i>480</i>	<i>120</i>	<i>600</i>
<i>Delbert Anderson</i>	3	<i>W/2</i>	<i>NE</i>	<i>"</i>	<i>"</i>	<i>"</i>	<i>80</i>		<i>860</i>	<i>280</i>	<i>1240</i>
<i>Eme J. A.</i>	4	<i>E 1/2</i>	<i>SE</i>	<i>"</i>	<i>"</i>	<i>"</i>	<i>80</i>		<i>860</i>	<i>320</i>	<i>1280</i>
<i>Everhart Perry J</i>	5	<i>NW</i>	<i>SE</i>	<i>"</i>	<i>"</i>	<i>"</i>	<i>40</i>		<i>480</i>	<i>200</i>	<i>680</i>
<i>Confederate Land Co</i>	6	<i>SW</i>	<i>SE</i>	<i>"</i>	<i>"</i>	<i>"</i>	<i>40</i>		<i>480</i>	<i>160</i>	<i>640</i>
<i>Johnson C. P.</i>	7	<i>SE</i>	<i>SW</i>	<i>"</i>	<i>"</i>	<i>"</i>	<i>40</i>		<i>480</i>	<i>220</i>	<i>700</i>
<i>Bollinger Wm H</i>	8	<i>SW</i>	<i>SW</i>	<i>"</i>	<i>"</i>	<i>"</i>	<i>40</i>		<i>480</i>	<i>100</i>	<i>580</i>
<i>Bushnell H. H.</i>	9	<i>NE</i>	<i>SW</i>	<i>"</i>	<i>"</i>	<i>"</i>	<i>40</i>		<i>480</i>	<i>100</i>	<i>580</i>
<i>Ellsworth J. C.</i>	10	<i>E 1/2 NW</i>	<i>NW</i>	<i>"</i>	<i>"</i>	<i>"</i>	<i>20</i>		<i>240</i>	<i>45</i>	<i>285</i>
<i>Indiana Johnnie</i>	11	<i>E 1/2 W 1/2 NW</i>	<i>SW</i>	<i>"</i>	<i>"</i>	<i>"</i>	<i>10</i>		<i>120</i>	<i>40</i>	<i>160</i>
<i>Johnson Mary E.</i>	12	<i>NW NW</i>	<i>SW</i>	<i>"</i>	<i>"</i>	<i>"</i>	<i>10</i>		<i>120</i>	<i>10</i>	<i>130</i>
<i>Griffin John W.</i>	13		<i>NW</i>	<i>"</i>	<i>"</i>	<i>"</i>	<i>160</i>		<i>1820</i>	<i>180</i>	<i>2100</i>

SECTION No. 5

Congressional Township No. 26, R. 14 E

Scale—Forty rods to an inch, or ten rods to a space, Congress Land, which is one mile square for a section.
 Number of acres in this section, according to the United States Survey.



COUNTY, INDIANA, 1891

Assessor's Plat-Book for

Marion

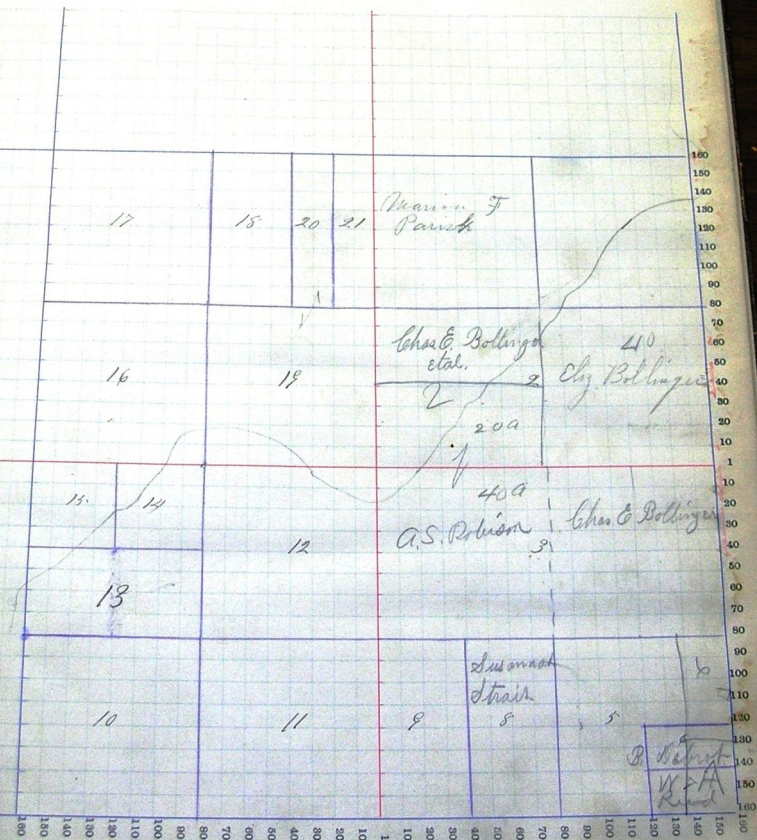
Township, No.

NAMES OF OWNERS.	Number on Plat.	DESCRIPTION.		Section.	Township.	Range.	Acres.	Headfeels.	Value of Lands.	Value of Improvements.	Value of Lands and Improvements.
<i>Edwards Chas E</i>	1	<i>NE</i>	<i>NE</i>	6	26	14	40	480	170	650	
<i>Edwards P C</i>	2	<i>SE</i>	<i>NE</i>	"	"	"	80	860	500	1560	
"	3	<i>NW</i>	<i>SE</i>	"	"	"	80	860	100	1060	
"	4	<i>SW</i>	<i>NE</i>	"	"	"	94	325		325	
<i>Amacher Margaret</i>	5	<i>NE</i>	<i>SE</i>	"	"	"	30	360	80	440	
<i>Case Chas E</i>	6	<i>SE</i>	<i>SE</i>	"	"	"	5	60	20	80	
<i>Crain Peter</i>	7	<i>SE</i>	<i>SE</i>	"	"	"	5	60	40	100	
<i>Shart Wm D</i>	8	<i>SW</i>	<i>SE</i>	"	"	"	20	240	60	300	
<i>Richard Geo</i>	9	<i>SW</i>	<i>SE</i>	"	"	"	20	240	40	280	
"	10	<i>SW</i>	<i>SW</i>	"	"	"	40	480	80	560	
<i>Kirschy Henry</i>	11	<i>SE</i>	<i>SW</i>	"	"	"	40	480	80	560	
<i>Willie Jas T</i>	12	<i>NE</i>	<i>SW</i>	"	"	"	40	450	100	550	
<i>Bovine Henry</i>	13	<i>SE</i>	<i>SW</i>	"	"	"	20	240	70	310	
<i>Pace Marion</i>	14	<i>NE</i>	<i>SW</i>	"	"	"	10	120		120	
<i>Pice Amanda A</i>	15	<i>NW</i>	<i>SW</i>	"	"	"	10	120		120	
<i>Shart John A</i>	16	<i>SW</i>	<i>NW</i>	"	"	"	40	480	80	560	
<i>Gilbert Joseph</i>	17	<i>NW</i>	<i>NW</i>	"	"	"	40	480	120	600	
<i>Casper Wm H & E</i>	18	<i>NW</i>	<i>NW</i>	"	"	"	20	240	10	250	
<i>King Eliza</i>	19	<i>SE</i>	<i>NW</i>	"	"	"	40	460		460	
"	20	<i>SE</i>	<i>NW</i>	"	"	"	10	120	30	150	
<i>Johnson Mary A</i>	21	<i>SE</i>	<i>NW</i>	"	"	"	10	120	30	150	

SECTION No. 6

Congressional Township No. 26, R. 14

Scale—Forty rods to an inch, or ten rods to a space, Congress Land, which is one mile square for a section.
 Number of acres in this section, according to the United States Survey.



Adams

COUNTY, INDIANA, 1891

Assessor's Plat-Book for *Monroe*

Township No. _____

NAMES OF OWNERS.	Number on Plat.	DESCRIPTION.	Section.	Township.	Range.	Acres.	Handwritten	Value of Land.	Value of Improvements.	Value of Land and Improvements.
<i>Winters David</i>	1	<i>N^o</i>	7	25	24	100		2400		2400
<i>Winters Oliver</i>	2	<i>1/2 N^o</i>	<i>S^o</i>	"	"	20		240	40	280
<i>Winters Paul</i>	3	<i>1/2 S^o</i>	<i>S^o</i>	"	"	20		240	30	270
"	4	<i>1/2 N^o</i>	<i>S^o</i>	"	"	20		240	30	270
<i>Winters Christ</i>	5	<i>1/2 E^o</i>	<i>S^o</i>	"	"	20		240	50	290
<i>Winters John</i>	6	<i>1/2</i>	<i>S^o</i>	"	"	90		810	160	970
<i>Winters Thomas</i>	7	<i>S^o</i>	<i>T^o</i>	"	"	40		480	80	560
<i>Winters John</i>	8	<i>N^o</i>	<i>T^o</i>	"	"	40		480		480
<i>Winters Thomas</i>	9	<i>1/2</i>	<i>T^o</i>	"	"	90		860	200	1060
<i>Winters Thomas</i>	10	<i>1/2</i>	<i>T^o</i>	"	"	90		860		860
<i>Winters John</i>	11	<i>1/2 E^o</i>	<i>T^o</i>	"	"	40		480	200	680
<i>Winters William</i>	12	<i>E^o E^o</i>	<i>T^o</i>	"	"	40		480	140	620

SECTION No. 7

Congressional Township No. 26 R. 14 E

*Scale—Fifty rods to an inch, or ten rods to a space, Congress Land, which is one mile square for a section.
Number of acres in this section, according to the United States Survey, _____*



Adams

COUNTY, INDIANA, 1891

Assessor's Plat-Book for *Marion*

Township, No. _____

NAMES OF OWNERS.	Number on Plat.	DESCRIPTION.		Section.	Township.	Range.	Acres.	Hundredths.	Value of Lands.	Value of Improvements.	Value of Lands and Improvements.
<i>Johnson Samuel</i>	1	<i>NE</i>	<i>NE</i>	8	26	14	40		480	220	700
<i>Hendricks J. W.</i>	2	<i>NE</i>	<i>NE</i>	"	"	"	40		480	120	600
<i>Wagner S. S.</i>	3	<i>SE</i>	<i>NE</i>	"	"	"	40		480	160	640
<i>Wagner Nicholas</i>	4	<i>SW</i>	<i>NE</i>	"	"	"	40		480	20	500
<i>Rick Peter</i>	5	<i>N$\frac{1}{2}$</i>	<i>SE</i>	"	"	"	80		860	160	1120
<i>Rick J. J.</i>	6	<i>S$\frac{1}{2}$</i>	<i>SE</i>	"	"	"	80		890	220	1200
<i>Wagner Ira</i>	7	<i>E$\frac{1}{2}$</i>	<i>SW</i>	"	"	"	80		860	220	1180
<i>Baker Mary J.</i>	8	<i>SW</i>	<i>SW</i>	"	"	"	40		480	130	610
<i>Williams Bartel</i>	9	<i>NE</i>	<i>SW</i>	"	"	"	40		480	80	560
<i>Wetzel Wm H.</i>	10		<i>SW</i>	"	"	"	158		2300		2300

SECTION No. 8

Congressional Township No. 26 R. 14 E

Scale—Forty rods to an inch, or ten rods to a space. Congress Land, which is one mile square for a section.
Number of acres in this section, according to the United States Survey, _____

