

Adams

COUNTY, INDIANA, 189

Assessor's Plat-Book for *Monroe*

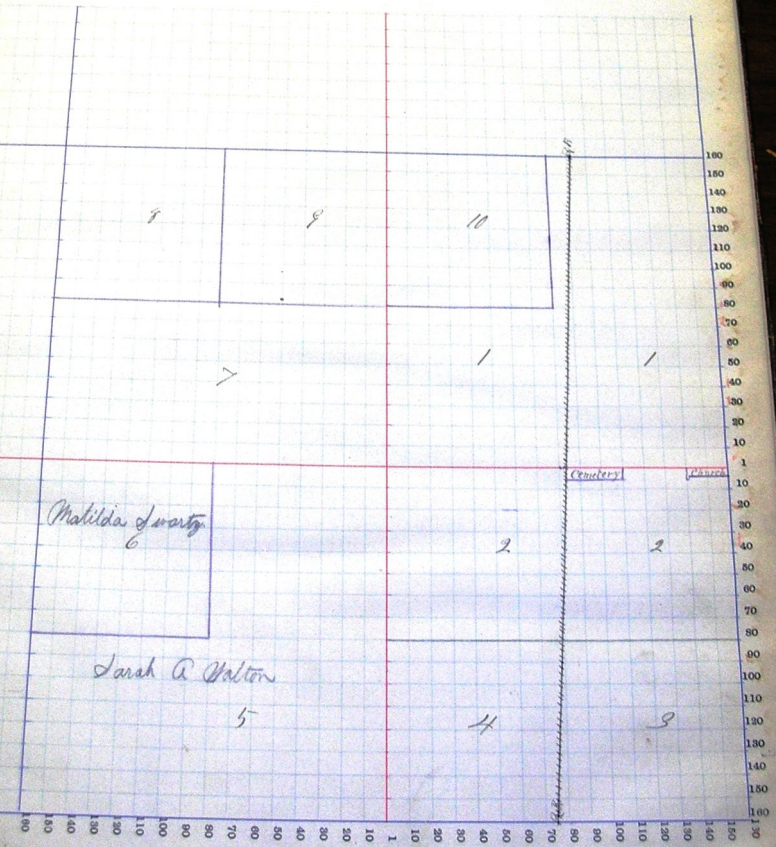
Township No.

NAMES OF OWNERS.	Number on Plat.	DESCRIPTION.		Section.	Township.	Range.	Acres.	Mendocinos.	Value of Land.	Value of Improvements.	Value of Land and Improvements.
<i>Alphon C W</i>	<i>1</i>	<i>pt</i>	<i>Ac</i>	<i>8</i>	<i>25</i>	<i>14</i>	<i>118</i>		<i>1620</i>	<i>250</i>	<i>1870</i>
<i>Smith R. L. Jr</i>	<i>2</i>	<i>Ac</i>	<i>Sc</i>	"	"	"	<i>76</i>	<i>26</i>	<i>1030</i>	<i>220</i>	<i>1270</i>
<i>Alphon C. W. & Son</i>	<i>3</i>	<i>pt</i>	<i>Sc</i>	"	"	"	<i>41</i>		<i>580</i>	<i>240</i>	<i>820</i>
<i>Alphon C. W.</i>	<i>4</i>	<i>pt</i>	<i>Sc</i>	"	"	"	<i>36</i>	<i>21</i>	<i>500</i>	<i>100</i>	<i>600</i>
<i>Madison Wm</i>	<i>5</i>	<i>pt</i>	<i>SW</i>	"	"	"	<i>120</i>		<i>1600</i>	<i>300</i>	<i>1900</i>
<i>Alphon C. W.</i>	<i>6</i>	<i>Ac</i>	<i>SW</i>	"	"	"	<i>40</i>		<i>480</i>	<i>140</i>	<i>620</i>
<i>Wm. H. H. H.</i>	<i>7</i>	<i>Sc</i>	<i>SW</i>	"	"	"	<i>80</i>		<i>1000</i>	<i>500</i>	<i>1500</i>
<i>Wm. H. H.</i>	<i>8</i>	<i>Ac</i>	<i>SW</i>	"	"	"	<i>40</i>		<i>480</i>	<i>100</i>	<i>580</i>
<i>Wm. H. H.</i>	<i>9</i>	<i>Ac</i>	<i>SW</i>	"	"	"	<i>41</i>		<i>560</i>	<i>400</i>	<i>960</i>
<i>Wm. H. H.</i>	<i>10</i>	<i>Ac</i>	<i>Sc</i>	"	"	"	<i>41</i>		<i>560</i>	<i>220</i>	<i>780</i>

SECTION No. 9

Congressional Township No. 26, R. 11 E.

Scale—Forty rods to an inch, or ten rods to a space, Congress Land, which is one mile square for a section.
Number of acres in this section, according to the United States Survey.



Assessor

COUNTY, INDIANA, 1891

Assessor's Plat-Book for

Morse

Township, No.

NAMES OF OWNERS.	Number on Plat.	DESCRIPTION.		Section.	Township.	Range.	Acres.	Hundredths.	Value of Lands.	Value of Improvements.	Value of Lands and Improvements.
<i>Hendricks John</i>	1	<i>A W</i>	<i>N E</i>	10	26	14	40		500	50	550
<i>Watts Jacob H</i>	2	<i>N 1/2 N E</i>	<i>N E</i>	"	"	"	20		260	60	320
<i>Watts Geo. H</i>	3	<i>S 1/2 N E</i>	<i>N E</i>	"	"	"	20		260	40	300
<i>Keheler David</i>	4	<i>S 1/2</i>	<i>N E</i>	"	"	"	80		1040	240	1280
<i>Reay Alex F</i>	5	<i>N E</i>	<i>S E</i>	"	"	"	40		480	20	500
<i>Reay John W. Jr.</i>	6	<i>S E</i>	<i>S E</i>	"	"	"	40		520	120	640
<i>Stiblich Sam H</i>	7	<i>W 1/2</i>	<i>S E</i>	"	"	"	80		1120	200	1320
<i>Hughes L. C.</i>	8	<i>E 1/2 E 1/2</i>	<i>S W</i>	"	"	"	40		590	120	670
<i>Hughes W. S.</i>	9	<i>W 1/2 E 1/2</i>	<i>S W</i>	"	"	"	40		590	60	610
<i>Smith John W</i>	10	<i>S W</i>	<i>S W</i>	"	"	"	40		560	120	680
<i>Smith J. M.</i>	11	<i>A W</i>	<i>S W</i>	"	"	"	40		560	120	680
<i>Hendricks Sam</i>	12	<i>W 1/2</i>	<i>A W</i>	"	"	"	78		1120	280	1400
<i>Hendricks James</i>	13	<i>E 1/2</i>	<i>A W</i>	"	"	"	80		1000	400	1400

SECTION No. 10

Congressional Township No. 26 R. 14 E

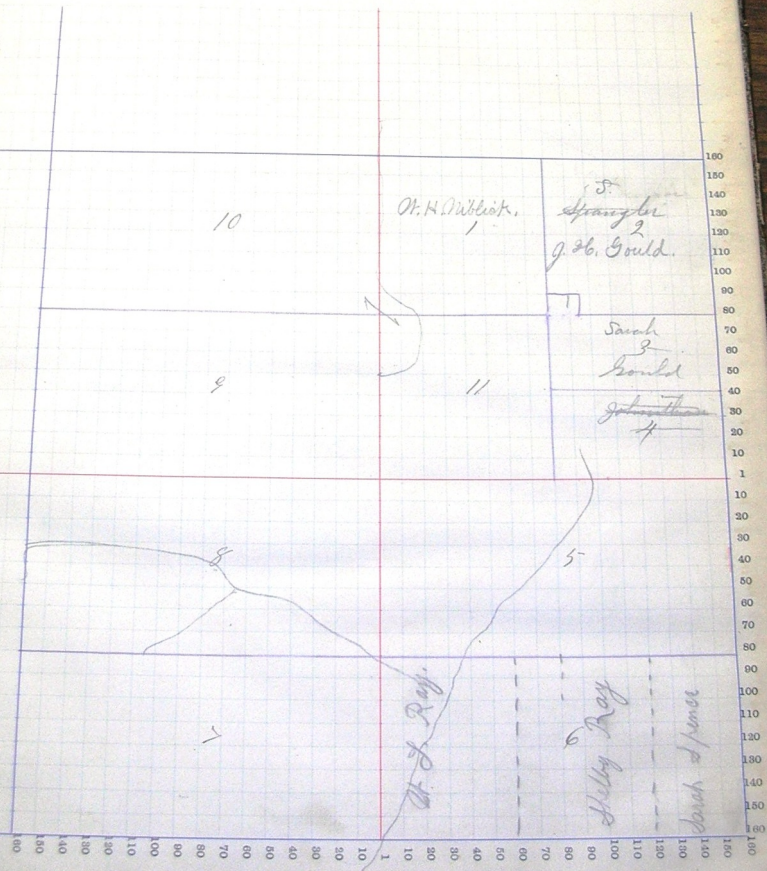
Scale—Forty rods to an inch, or ten rods to a space, Congress Land, which is one mile square for a section.
 Number of acres in this section, according to the United States Survey, _____



SECTION No. 11

Congressional Township No. 26 R. 14 E

Scale—Forty rods to an inch, or ten rods to a space, Congress Land, which is one mile square for a section.
 Number of acres in this section, according to the United States Survey, _____



SECTION No. 12

Congressional Township No. 26, R. 14E

Scale—Forty rods to an inch, or ten rods to a space, Congress Land, which is one mile square for a section.
Number of acres in this section, according to the United States Survey, _____

